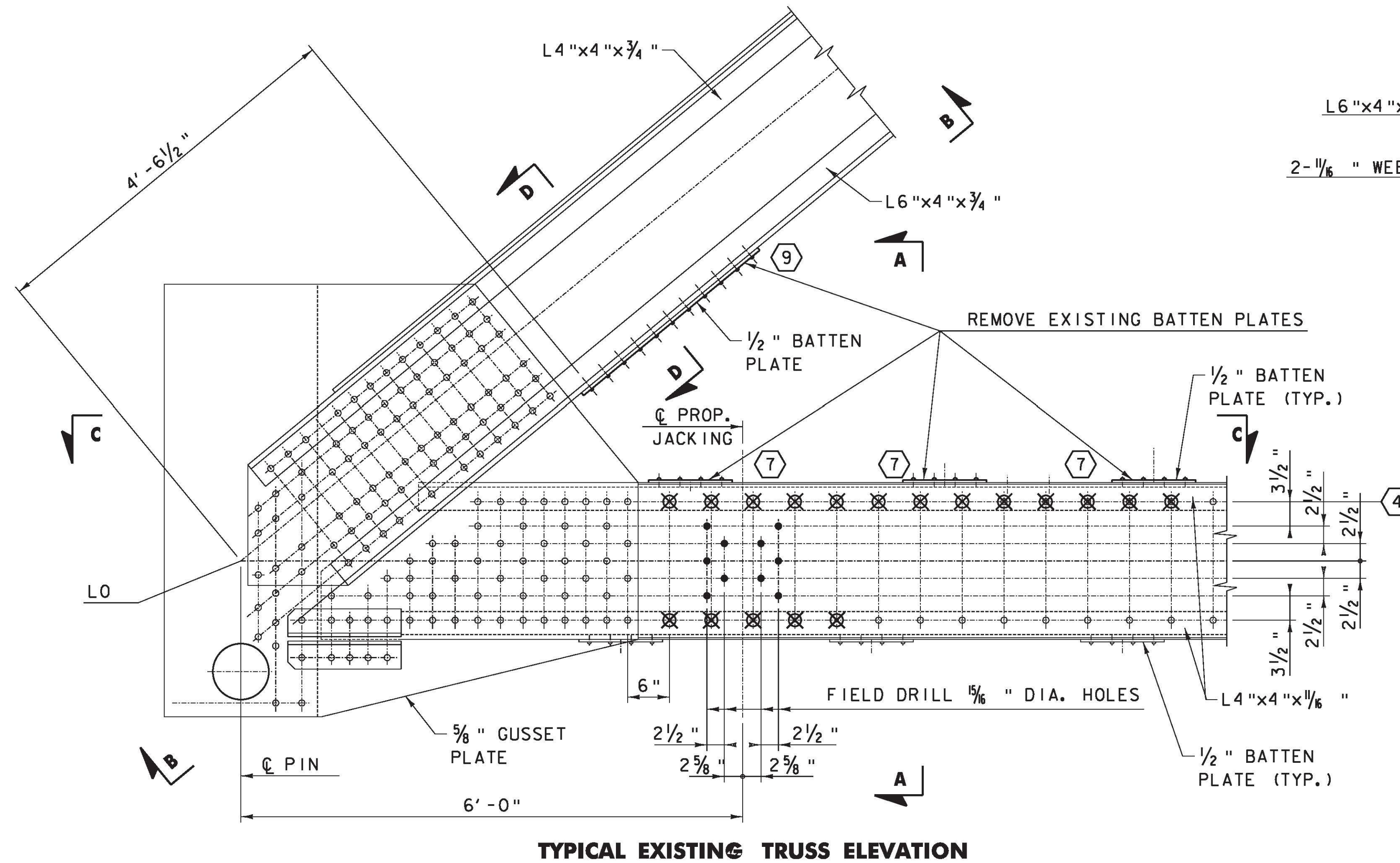
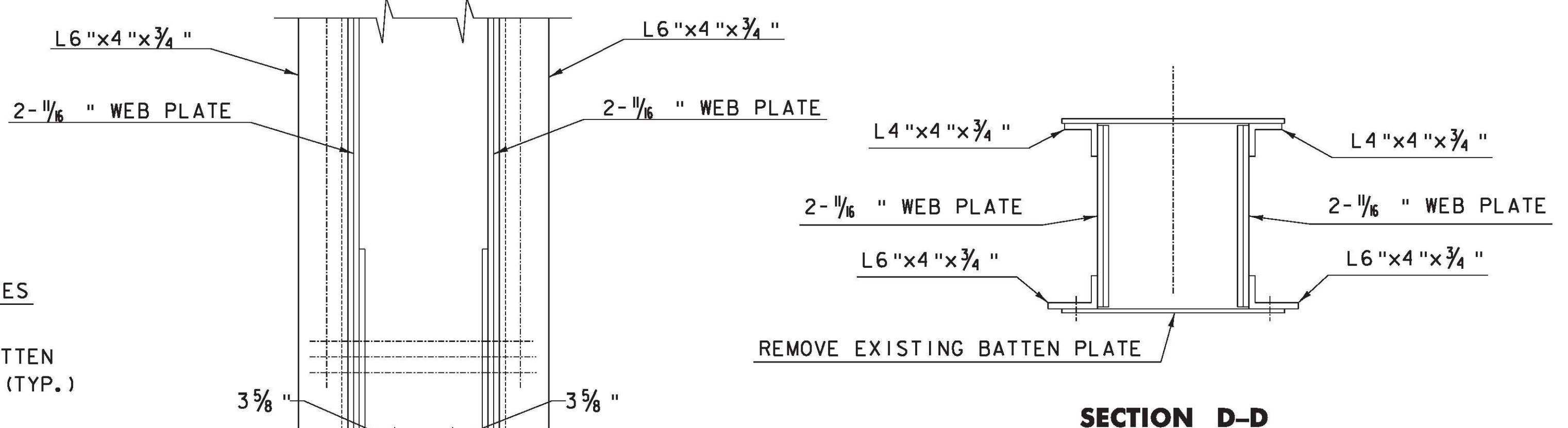


FILE NAME = v:\projects\ermy\2\22076\cadd\mstr\brdge work\wbs (2-2) jacking_r90c092_jacking_rem.dwg
 DATE/TIME = 8/3/2011
 USER = 3293



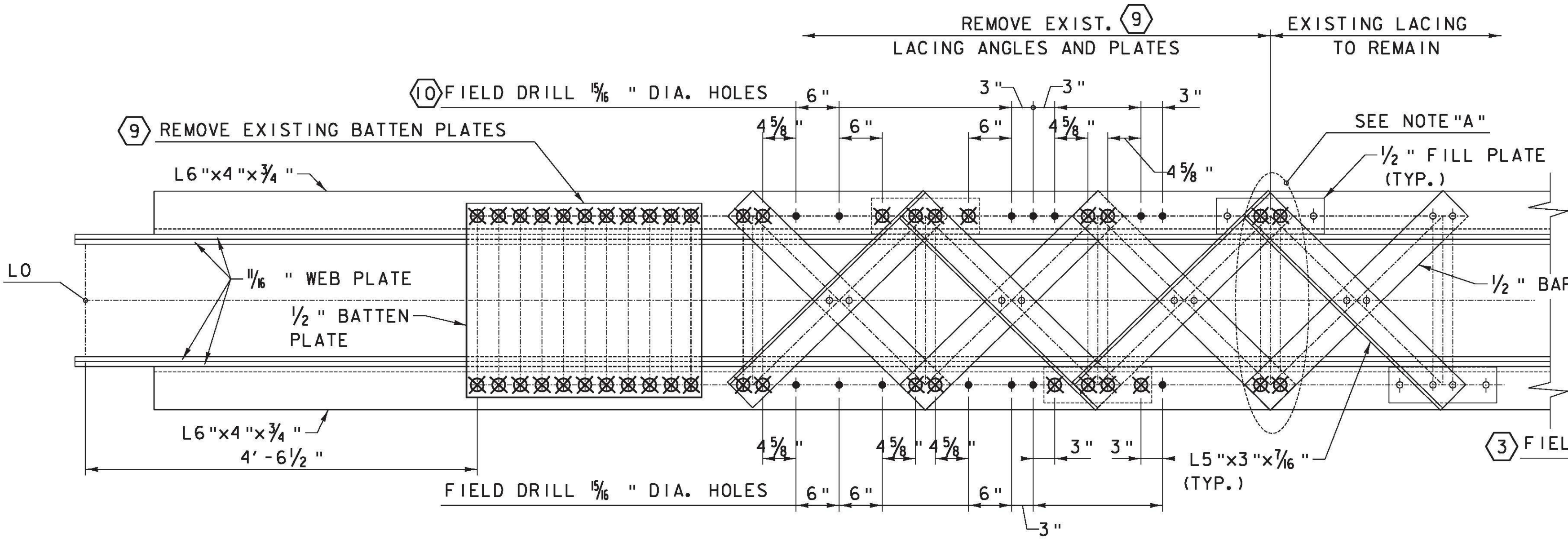
TYPICAL EXISTING TRUSS ELEVATION



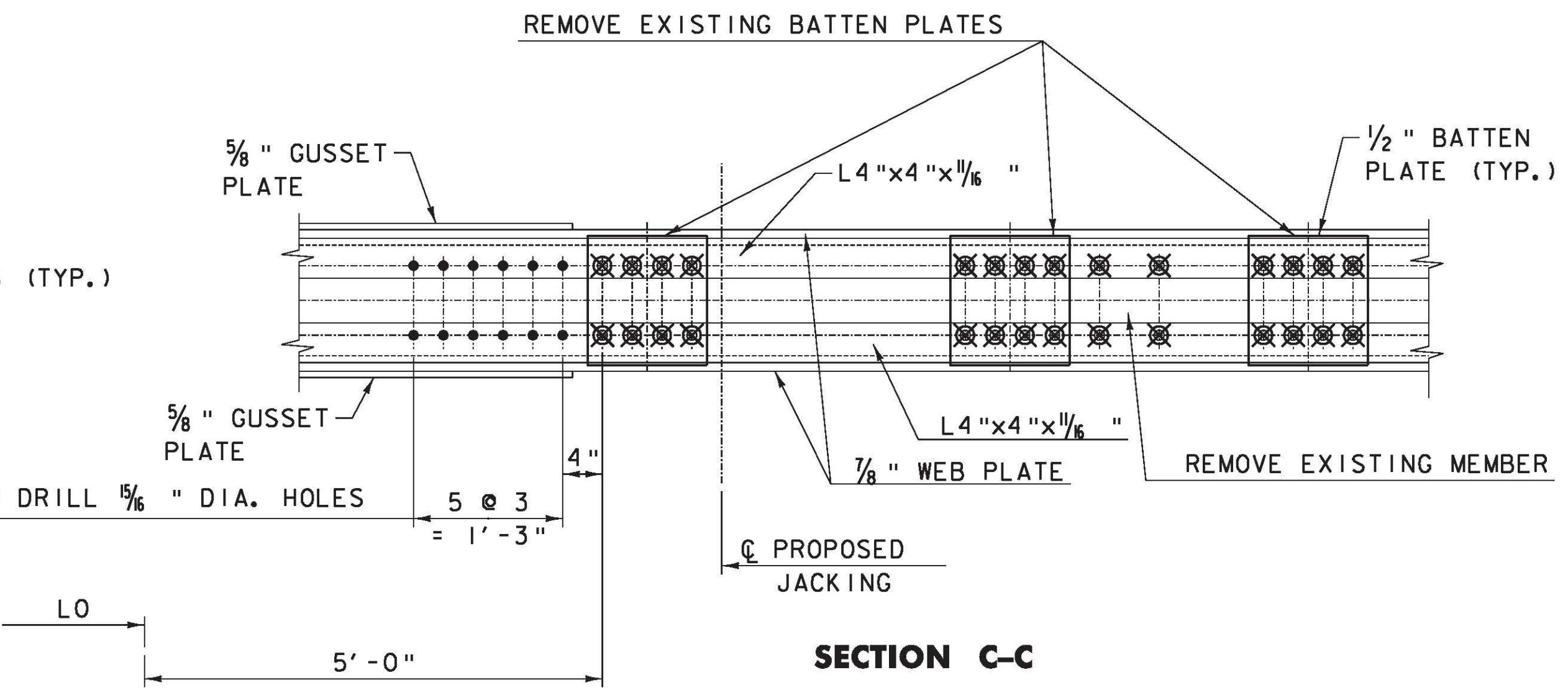
SECTION A-A

SECTION D-D

- GENERAL NOTES:**
- DIMENSIONS BASED ON AS-BUILT RECORD DRAWINGS 4/19/1929
 - (#) = JACKING ASSEMBLY PROCEDURE (SEE DRAWING J3).
 - UNLESS OTHERWISE NOTED IN THE CONTRACT DOCUMENTS, ALL BOLTS SHALL BE THE SAME DIAMETER AS THE RIVETS THEY REPLACE.
 - RIVETS SHALL BE REMOVED BY ONE OF THE FOLLOWING METHODS:
 - SHEAR RIVET HEAD USING A PNEUMATIC RIVET BREAKER, AND DRIVE OUT RIVET SHANK USING A PNEUMATIC PUNCH.
 - FLAME CUT RIVET HEAD 1/16 INCH ABOVE BASE METAL USING A RIVET SCARFING TIP, AND DRIVE OUT SHANK USING A PNEUMATIC PUNCH.



SECTION B-B



SECTION C-C

- LEGEND & NOTES**
- ⊗ - REMOVE EXIST. RIVET
 - ⊕ - FIELD DRILL NEW HOLE.
 - ⊙ - EXISTING RIVET TO REMAIN.
- NOTE "A":
 REMOVE EXISTING RIVETS.
 REMOVE LACING ANGLES AS SHOWN.

EXISTING REMOVAL PLAN AND DETAILS FOR JACKING ASSEMBLY	PROJECT NAME: RICHMOND
	PROJECT NUMBER: STP-RS 0284(III)
	FILE NAME: z90c092 jacking rem dtl.dwg
	PROJECT LEADER: DJV
DESIGNED BY: CTA/PP	PLOT DATE: 8/3/2011
DWG. NO.: J2	DRAWN BY: PKR
	CHECKED BY: VC/KM
	SHEET XX OF XX