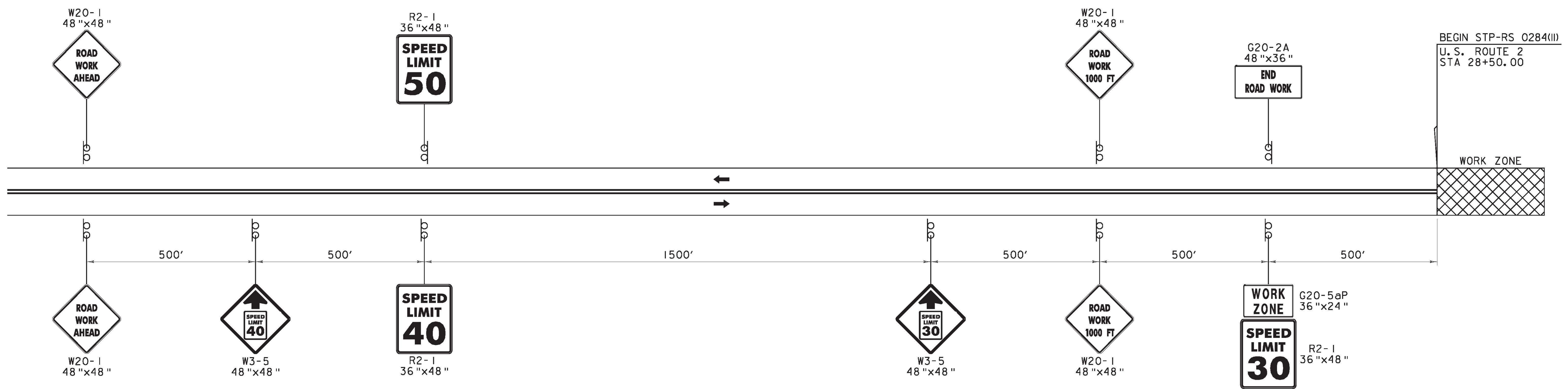
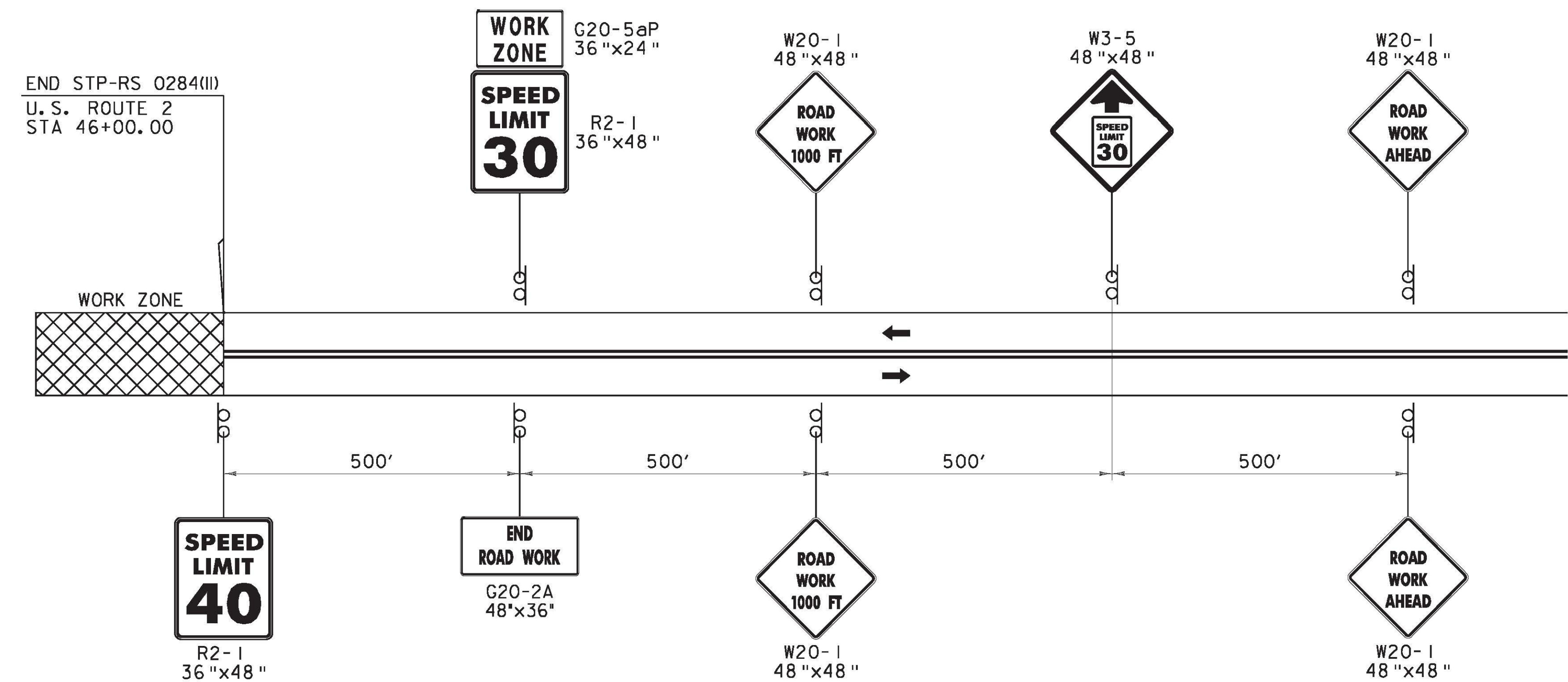


FILE NAME = v:\projects\hwy\222876\cadd\instr\ubs (1-17)\trans management\z90c92_CS_01.17.dgn
 DATE/TIME = 4/14/2011
 USER = 3066



U.S. ROUTE 2 EASTBOUND ADVANCED SIGNING DETAIL



U.S. ROUTE 2 WESTBOUND ADVANCED SIGNING DETAIL

<input checked="" type="checkbox"/> Reviewed	<input type="checkbox"/> Furnish As Corrected
<input type="checkbox"/> Rejected	<input type="checkbox"/> Revise and Resubmit

This review is only for general conformance with the design concept and the information given in the Construction Documents. Corrections or comments made on the shop drawings during the review do not relieve the Contractor from compliance with the requirements of the Plans and Specifications. Review of a specific item shall not include review of an assembly of which an item is a component. The Contractor is responsible for dimensions to be confirmed and corrected at the job site; information that pertains solely to the fabrication process or to the means, methods, techniques, sequences and procedures of construction; coordination of the Work with that of other trades and performing all Work in a safe and satisfactory manner.

Date: 4/14/2011
 By: J. Santacruz

NOTE:
 1. REFER TO GENERAL NOTES SHEET GN-1 FOR ADDITIONAL INFORMATION.

LEGEND

SIGN AND POSTS INDICATES TRAFFIC DIRECTION

WORK AREA PORTABLE CHANGEABLE MESSAGE SIGN

CONSTRUCTION APPROACH SIGNING	PROJECT NAME: RICHMOND	PLOT DATE: 4/14/2011
	PROJECT NUMBER: STP-RS 0284(II)	DRAWN BY: C.A.K.
	FILE NAME: z90c92_CS_01.17.dgn	CHECKED BY: D.E.G.
	PROJECT LEADER: D.E.G. DESIGNED BY: B.T.H. DWG. NO.: CS-1	SHEET 4 OF 7