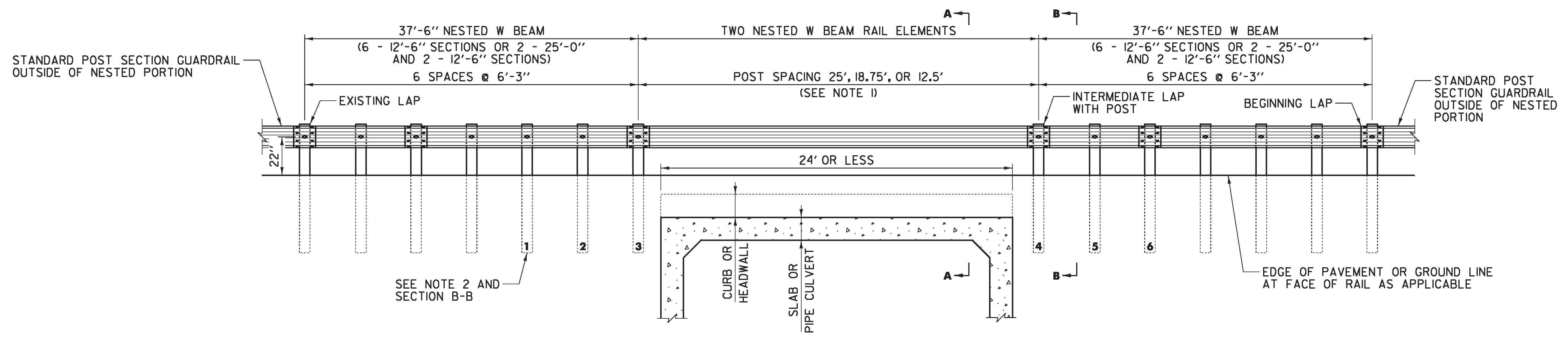
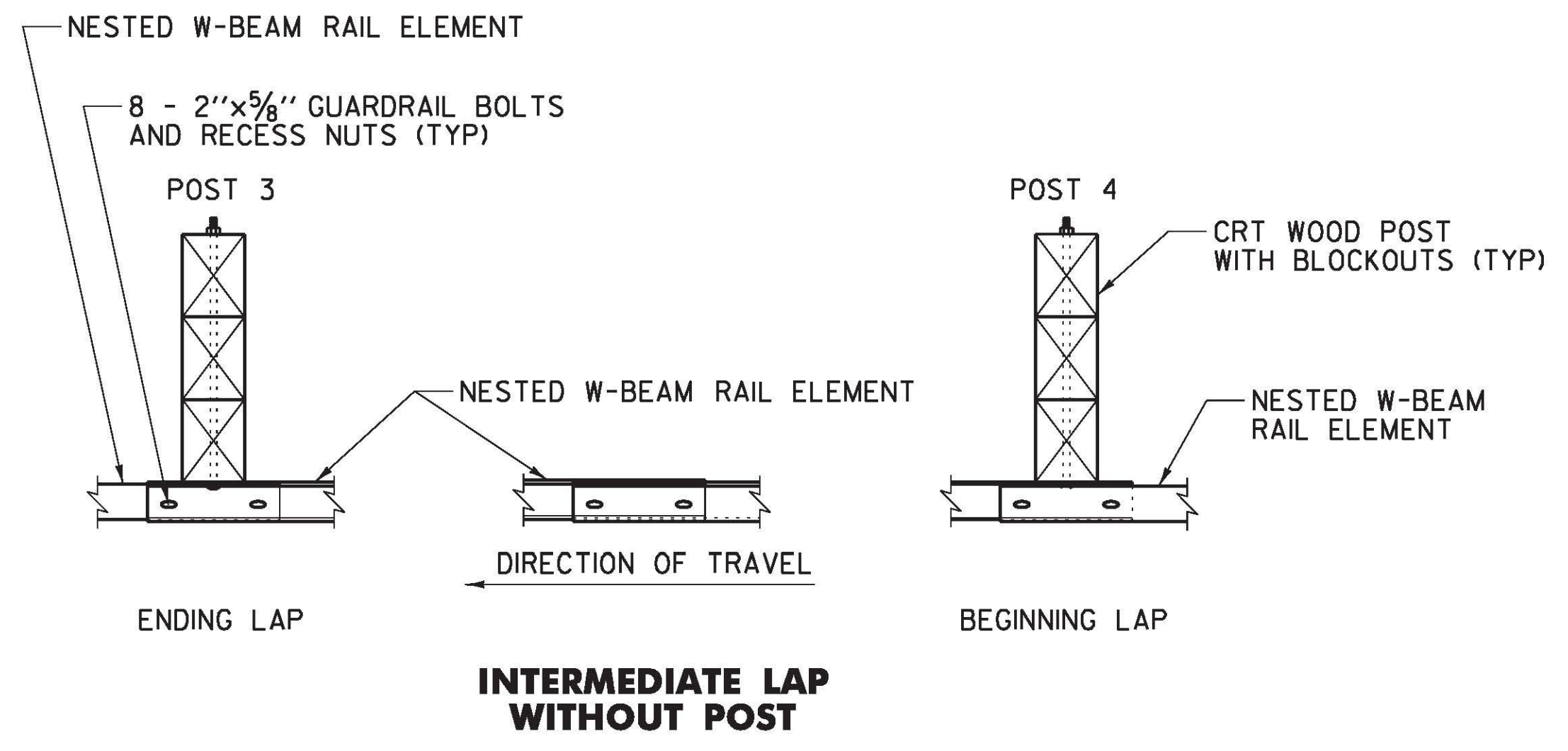
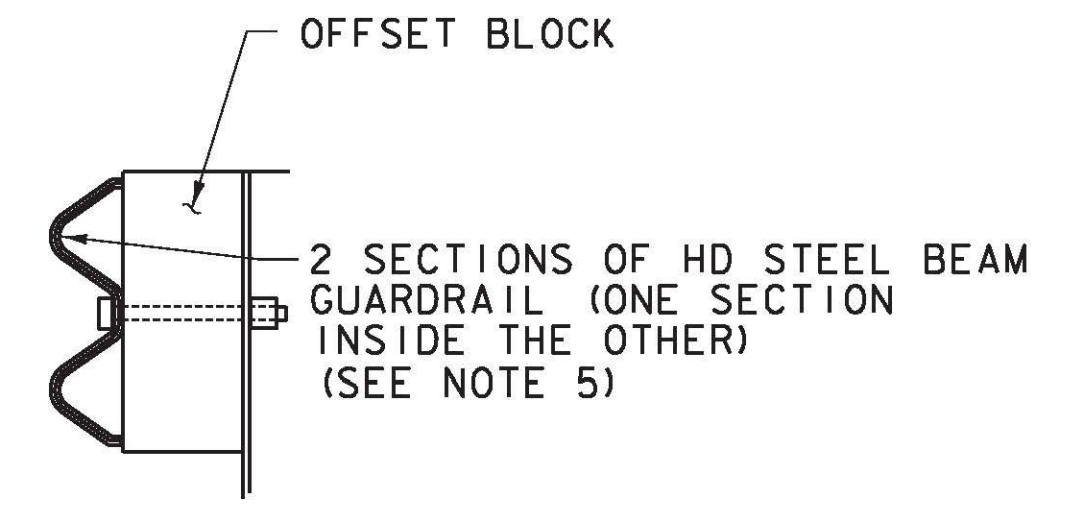


FILE NAME = v:\projects\enr\222076\cadd\mstr\sub (1-14)\cadd\design\290c092\_detail\_02\_14.dgn  
 DATE/TIME = 8/25/2011  
 USER = 3086

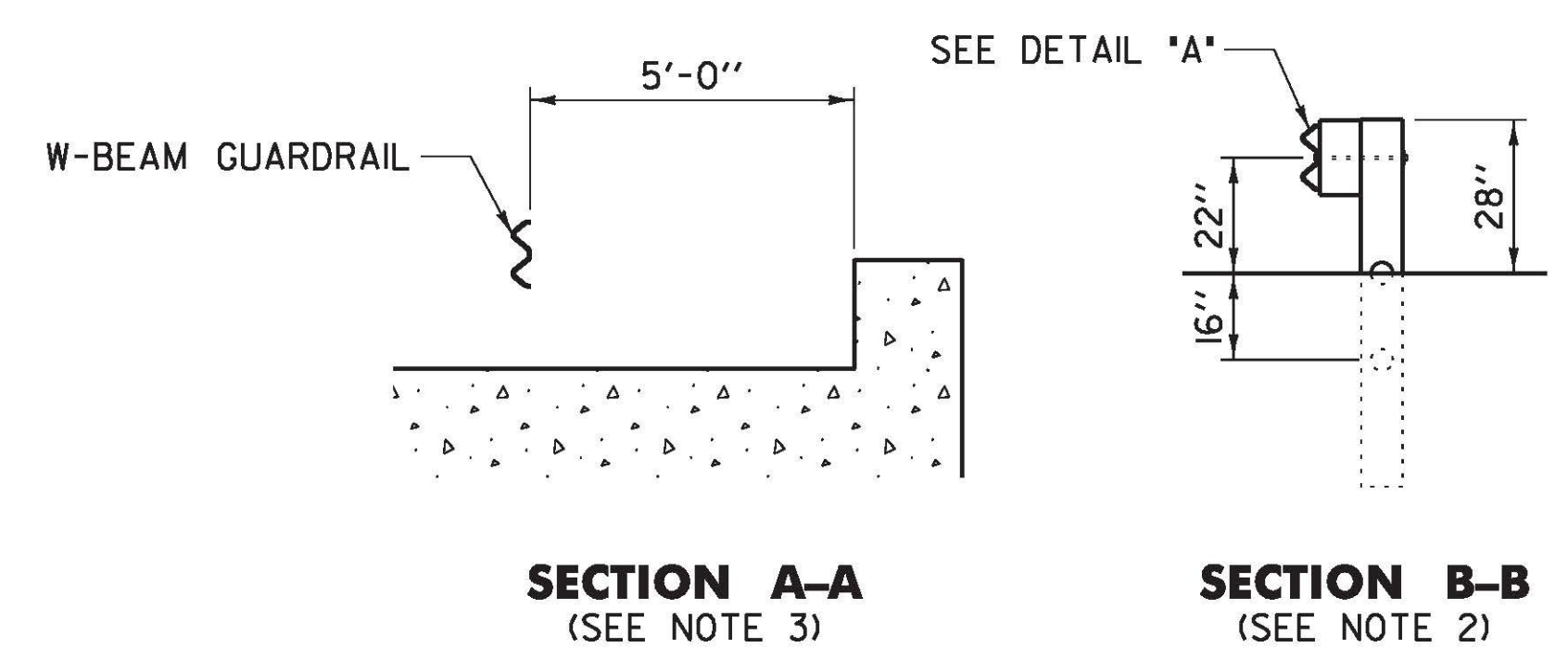


**ELEVATION**

U.S. ROUTE 2 RICHMOND STA 29+65.3 TO STA 30+52.8 RT (87.5 LF)



**DOUBLE-NESTED GUARDRAIL SYSTEM**



X Reviewed	_____ Furnish As Corrected
_____ Rejected	_____ Revise and Resubmit

This review is only for general conformance with the design concept and the information given in the Construction Documents. Corrections or comments made on the shop drawings during the review do not relieve the Contractor from compliance with the requirements of the Plans and Specifications. Review of a specific item shall not include review of an assembly of which the item is a component. The Contractor is responsible for dimensions to be confirmed and corrected at the job site; information that pertains solely to the fabrication process or to the means, methods, techniques, sequence and procedure of construction, coordination of the Work with that of other trades and performing all Work in a safe and satisfactory manner.

Date: August 22, 2011  
 By: J. Santacruz

**McFarland Johnson**

**NOTES:**

- 25'-0" RAIL LENGTHS MAY BE USED TO ELIMINATE THE INTERMEDIATE LAP WITHOUT A POST. DO NOT PLACE A LAP WITHOUT A POST UNLESS NEEDED DUE TO LENGTH OF GAP.
- POSTS 1 THRU 6 ARE CRT POSTS WITH TWO BLOCKOUTS. SEE SECTION B-B FOR DETAILS.
- INSTALL THE BACK FACE OF THE NESTED GUARDRAIL A MINIMUM OF 5'-0" FROM THE FACE OF THE CURB-LIKE HEADWALL.
- SEE STANDARD G-1 FOR STEEL BEAM GUARDRAIL DETAILS.
- THIS WORK SHALL BE PAID UNDER ITEM 621.216 HD STEEL BEAM GUARDRAIL, GALVANIZED/NESTED AT A PAY FACTOR OF 1.0 AS DIRECTED BY THE RESIDENT ENGINEER.
- THIS DETAIL TO BE USED AS INDICATED AT THE STATIONS INDICATED ABOVE OR AS DIRECTED BY THE RESIDENT ENGINEER.

<b>MISCELLANEOUS DETAILS SHEET #2</b>	PROJECT NAME: RICHMOND	PLOT DATE: 8/25/2011
	PROJECT NUMBER: STP-RS 0284(III)	DRAWN BY: C.A.K.
	FILE NAME: z90c092_DETAIL_02_14.dgn	CHECKED BY: D.E.G.
	PROJECT LEADER: D.E.G. DESIGNED BY: B.T.H. DWG. NO.: MD-2	SHEET 21 OF 46