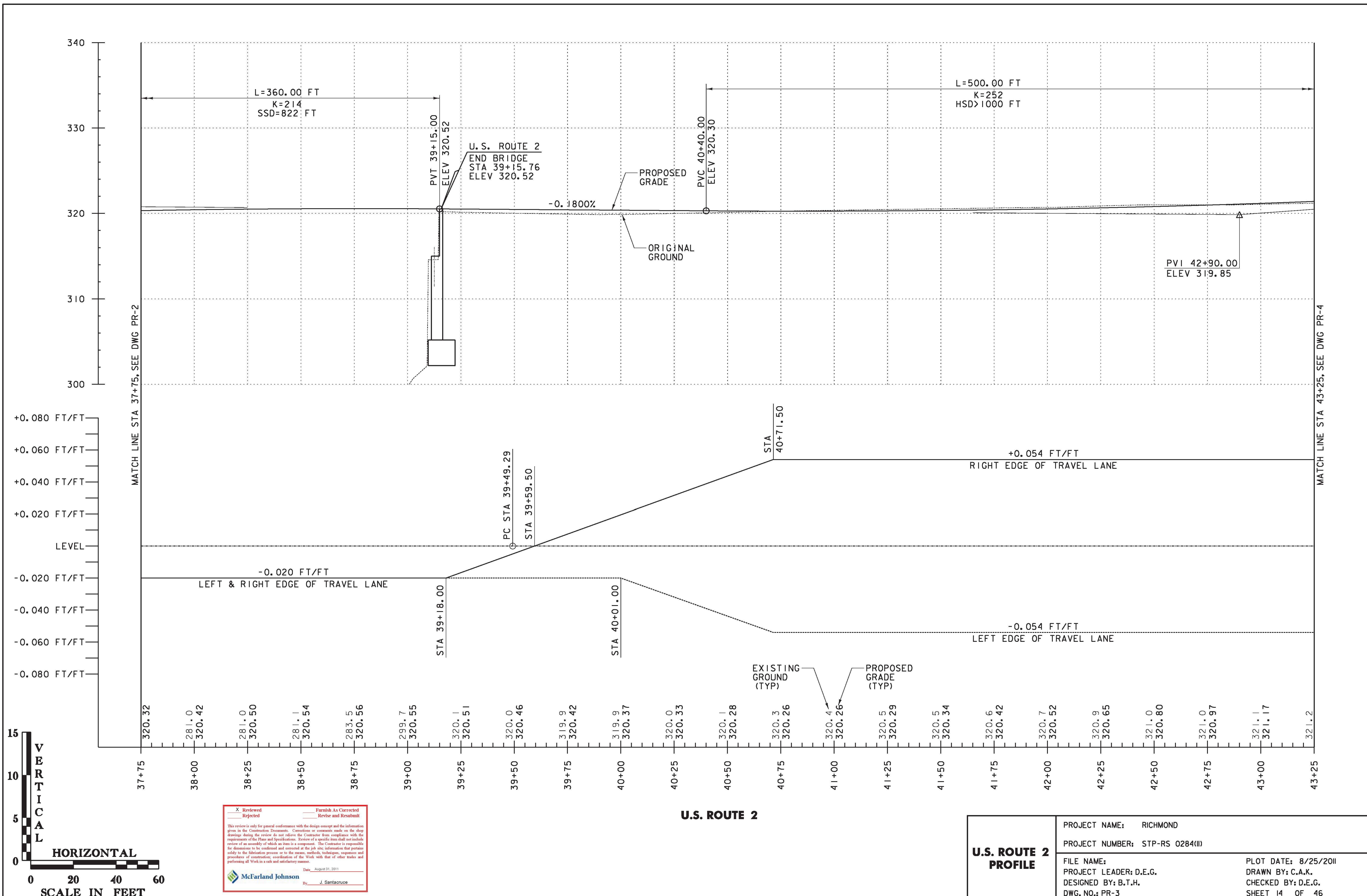


FILE NAME = v:\projects\enr\22276\cadd\mstr\subs (1-14)\roadway design\20c092_prcs.03.14.dgn
 DATE/TIME = 8/25/2011
 USER = 3086



X	Reviewed	—	Furnish As Corrected
—	Rejected	—	Revise and Resubmit

This review is only for general conformance with the design concept and the information given in the Construction Documents. Corrections or comments made on the shop drawings during the review do not relieve the Contractor from compliance with the requirements of the Plans and Specifications. Review of a specific item does not include review of an assembly of which an item is a component. The Contractor is responsible for dimensions to be confirmed and corrected in the job site, information that pertains solely to the fabrication process or to the name, methods, techniques, sequences and procedure of construction, coordination of the Work with that of other trades and performing all Work in a safe and satisfactory manner.

Date: August 31, 2011
 By: J. Santarone

McFarland Johnson

U.S. ROUTE 2 PROFILE	PROJECT NAME: RICHMOND	PLOT DATE: 8/25/2011
	PROJECT NUMBER: STP-RS 0284(III)	DRAWN BY: C.A.K.
	FILE NAME:	CHECKED BY: D.E.G.
	PROJECT LEADER: D.E.G. DESIGNED BY: B.T.H. DWG. NO.: PR-3	SHEET 14 OF 46