

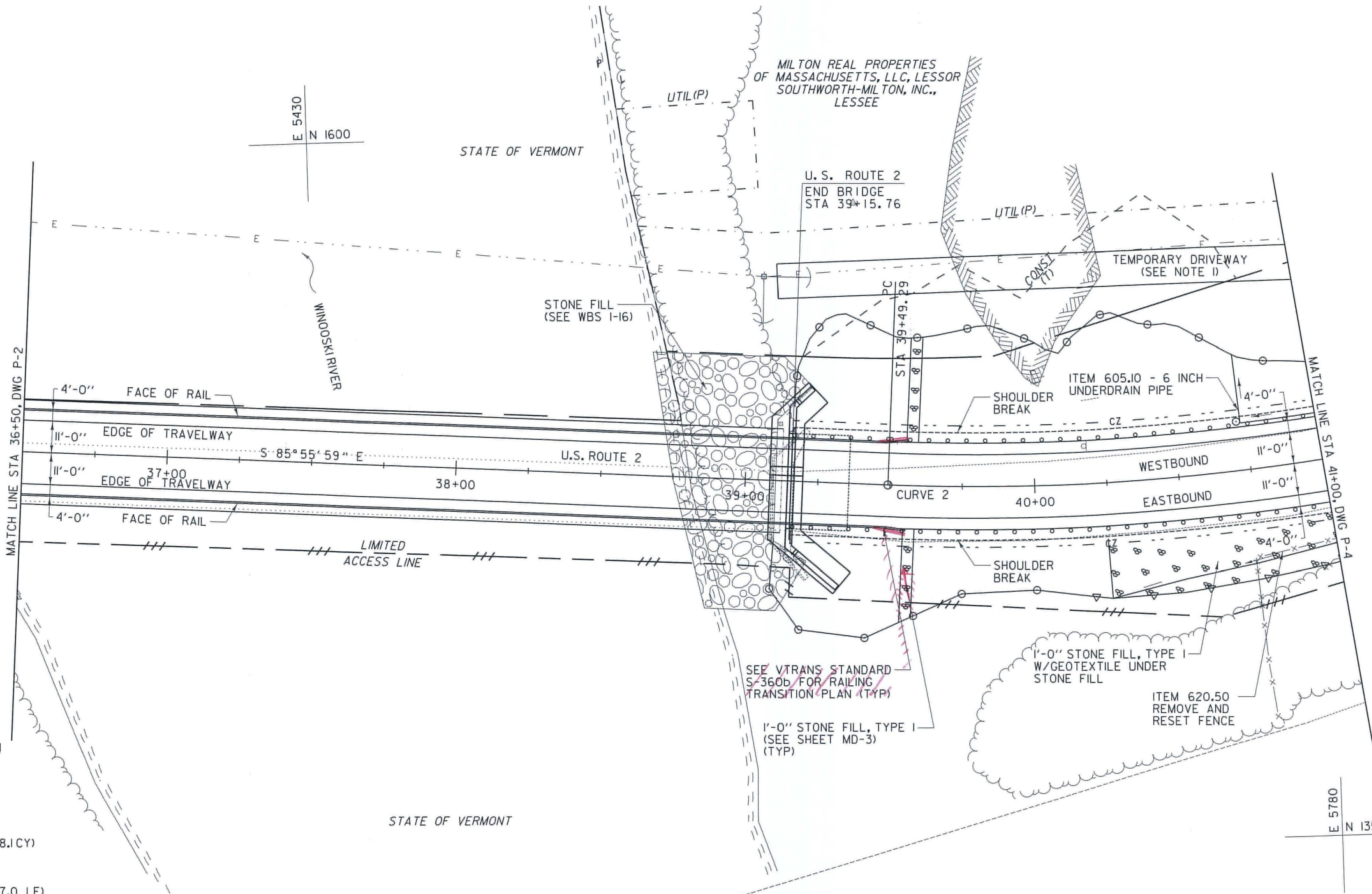
E 5830
N 1500

E 5780
N 1350

STATE OF VERMONT

STATE OF VERMONT

STATE OF VERMONT



X Reviewed
 Rejected

— Furnish As Corrected
 Revise and Resubmit

This review is only for general conformance with the design concept and the information given in the Construction Documents. Corrections or comments made on the drawings during the review do not release the Contractor from compliance with the requirements of the Plans and Specifications. Review of a specific item shall not include review of an assembly of which it is a component. The Contractor is responsible for dimensions to be confirmed and corrected at the job site, information that pertains solely to the construction process or to the means, methods, techniques, sequences and procedures of construction, coordination of the Work with that of other trades and performing all Work in a safe and satisfactory manner.

August 31, 2011
 J. Santacruse

McFarland Johnson

605.95 UNDERDRAIN FLUSHING BASIN
RICHMOND:
STA 40+75.0 LT

613.10 STONE FILL, TYPE I
RICHMOND:
STA 39+58.0 LT (5.4 CY)
STA 39+58.0 RT (4.6 CY) (2.2 CY)
STA 40+25.0 - STA 41+00.0 RT (58.1 CY)

605.10 6 INCH UNDERDRAIN PIPE
RICHMOND:
STA 40+75.0 - STA 41+00.0 LT (47.0 LF)

616.28 CAST-IN-PLACE CONCRETE CURB, TYPE B
RICHMOND:
STA 39+15.8 - STA 39+55.8 LT (40.0 LF)
STA 39+15.8 - STA 39+55.8 RT (40.0 LF)

620.50 REMOVING AND RESETTING FENCE
RICHMOND:
STA 40+73.0 - STA 41+00.0 RT (34.0 LF)

900.640 SPECIAL PROVISION (BOX BEAM GUARDRAIL)
621.20 STEEL BEAM GUARDRAIL, GALVANIZED
RICHMOND:
STA 39+44.9 - STA 41+00.0 LT (154.9 LF)
STA 39+44.9 - STA 41+00.0 RT (154.9 LF)

621.72 GUARDRAIL APPROACH SECTION, GALVANIZED NETC 2-RAIL
RICHMOND:
STA 39+15.8 - STA 39+44.9 LT
STA 39+15.8 - STA 39+44.9 RT

900.620 SPECIAL PROVISION (TRANSITION BRIDGE RAIL TO BOX BEAM GUARDRAIL)
RICHMOND:
STA 39+17.9 - STA 39+49.9 LT (15A)
STA 39+17.9 - STA 39+49.9 RT (15A)

649.31 GEOTEXTILE UNDER STONE FILL
RICHMOND:
STA 40+25.0 - STA 41+00.0 RT (174.3 SY)

NOTE:
1. TEMPORARY DRIVEWAY SHALL REMAIN IN PLACE TO ALLOW ACCESS TO UTILITY POLE.

CURVE 2
DELTA = 33° 30' 38"
D = 7° 32' 20"
R = 760.00'
L = 228.81'
T = 444.50'
E = 32.70'



PROJECT LAYOUT SHEET #3	PROJECT NAME: RICHMOND	PLOT DATE: 8/25/2011
	PROJECT NUMBER: STP-RS 0284(III)	DRAWN BY: C.A.K.
	FILE NAME: z90c092.L03.L4.dgn	CHECKED BY: D.E.G.
	DESIGNED BY: B.T.H.	SHEET 9 OF 46

FILE NAME: v:\projects\enr\2011\22075\cadd\mstr\wbs (1-14)\roadway design\z90c092.L03.L4.dgn
DATE/TIME: 8/25/2011 10:58:30
USER: jst