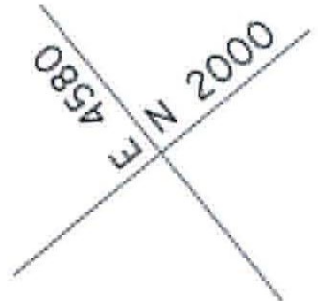
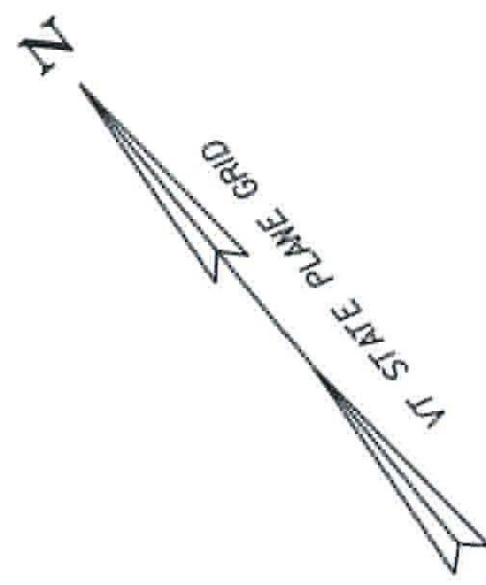


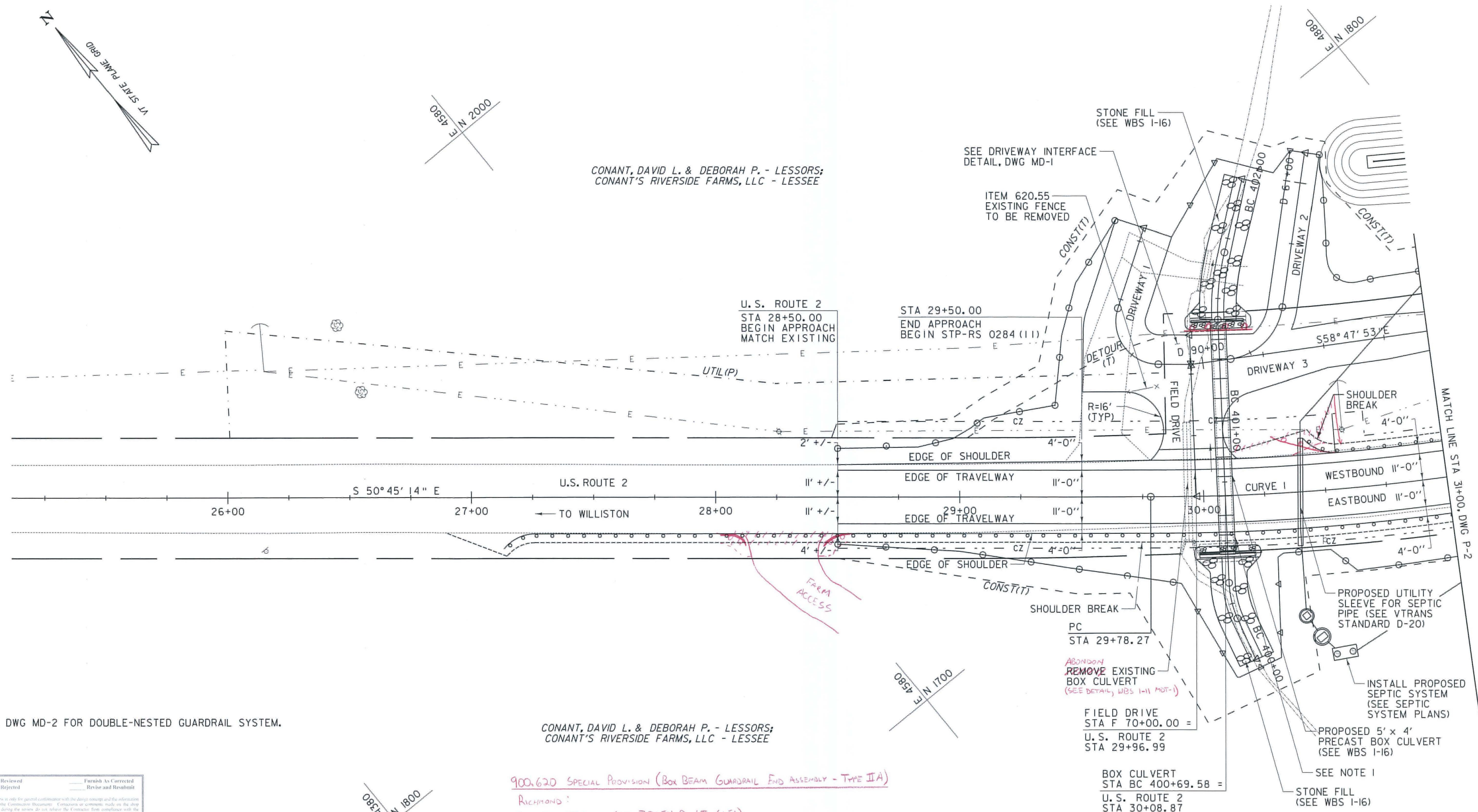
FILE NAME: V:\P\Projects\141\ROADWAY DESIGN\141\ROADWAY DESIGN\141\ROADWAY DESIGN\141\141.dgn
 DATE/TIME: 8/25/2011
 USER: J. SANTACRUZ



CONANT, DAVID L. & DEBORAH P. - LESSORS;
 CONANT'S RIVERSIDE FARMS, LLC - LESSEE

U.S. ROUTE 2
 STA 28+50.00
 BEGIN APPROACH
 MATCH EXISTING

STA 29+50.00
 END APPROACH
 BEGIN STP-RS 0284 (11)



NOTE:
 1. SEE DWG MD-2 FOR DOUBLE-NESTED GUARDRAIL SYSTEM.

CONANT, DAVID L. & DEBORAH P. - LESSORS;
 CONANT'S RIVERSIDE FARMS, LLC - LESSEE

X Reviewed	— Furnish As Corrected
Rejected	— Revise and Resubmit

This review is only for general coordination with the design concept and the information given in the Contract Documents. Comments or corrections made on the shop drawings during the review do not release the Contractor from compliance with the requirements of the Plans and Specifications. Review of a specific item shall not include review of an assembly of items or items in a component. The Contractor is responsible for dimensions to be confirmed and corrected at the job site, information that pertains solely to the fabricative process, or to the means, methods, techniques, apparatus and procedures of construction, coordination of the Work with that of other trades and performing all Work in a safe and satisfactory manner.

McFarland Johnson
 J. Santacruz

900.620 SPECIAL PROVISION (BOX BEAM GUARDRAIL END ASSEMBLY - TYPE IIA)

RICHMOND:
 STA 30+33.6 - STA 30+54.0 LT (1FA)

900.640 SPECIAL PROVISION (BOX BEAM GUARDRAIL)

RICHMOND:
 STA 30+54.0 - STA 31+00.0 (46.0 LF)

620.55 REMOVAL OF EXISTING FENCE
 RICHMOND:
 STA 29+69.0 - STA 29+82.0 LT (13.0 LF)

621.20 STEEL BEAM GUARDRAIL, GALVANIZED
 RICHMOND:
 STA 27+13.3 - STA 29+65.3 RT (252.0 LF)

621.60 ANCHOR FOR STEEL BEAM RAIL
 RICHMOND:
 STA 27+19.8 RT
 STA 30+60.4 LT

621.216 HD STEEL BEAM GUARDRAIL, GALVANIZED/NESTED
 RICHMOND:
 STA 29+65.3 - STA 30+52.8 RT (87.5 LF)

621.60 ANCHOR FOR STEEL BEAM RAIL
 RICHMOND:
 STA 27+19.8 RT
 STA 30+60.4 LT

CURVE 1
 DELTA = 35° 10' 45"
 D = 6° 21' 58"
 R = 900.00'
 T = 285.32'
 L = 552.60'
 E = 42.14'



PROJECT LAYOUT SHEET #1

PROJECT NAME: RICHMOND	PLOT DATE: 8/25/2011
PROJECT NUMBER: STP-RS 0284(11)	DRAWN BY: C.A.K.
FILE NAME: z90c092.L01.14.dgn	CHECKED BY: D.E.G.
PROJECT LEADER: D.E.G.	SHEET 7 OF 46
DESIGNED BY: B.T.H.	
DWG. NO.: P-1	