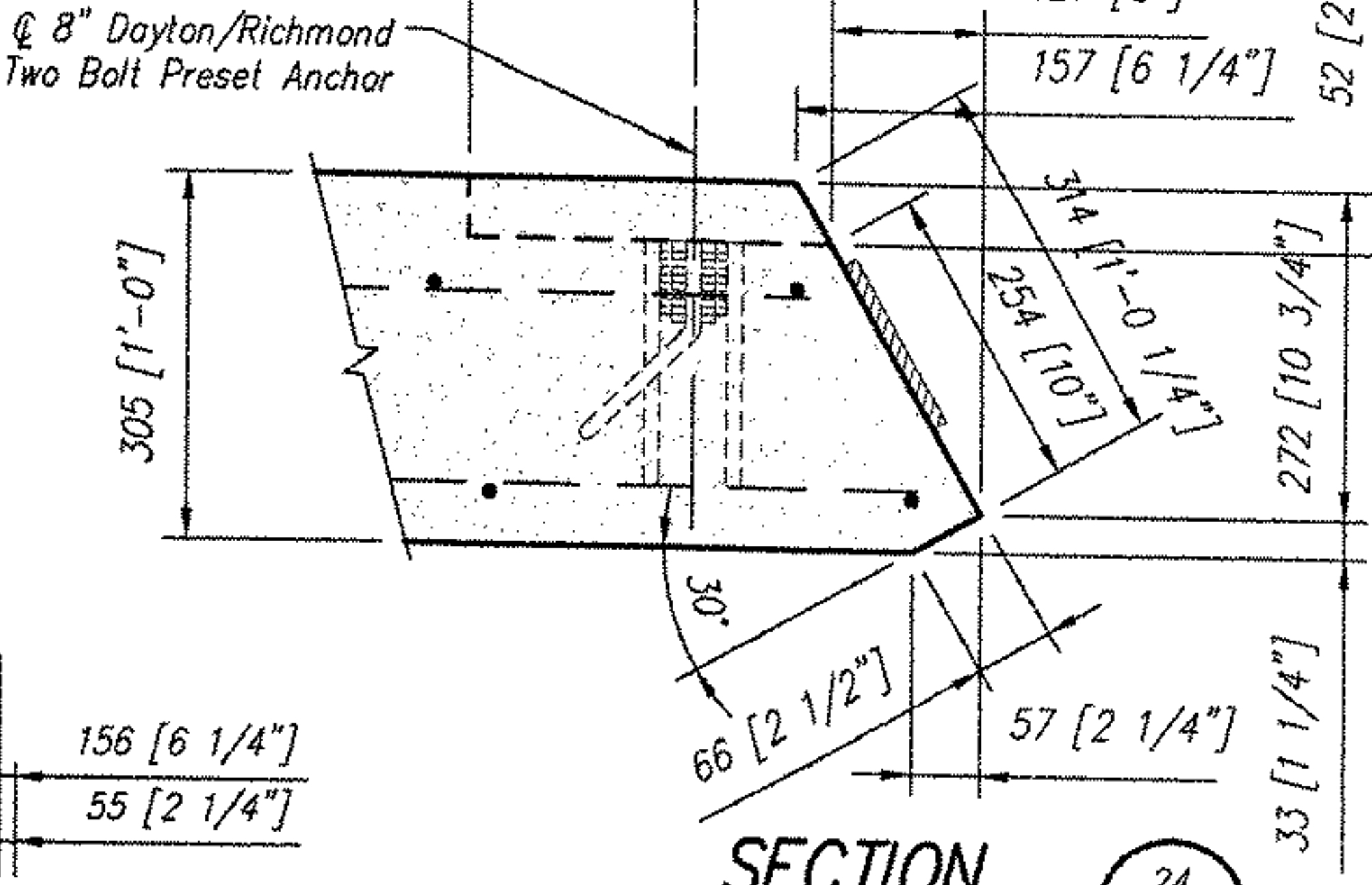


Notes:

- Elevation is looking at back face of Wingwall
- All edges of Precast to have a 19 [3/4"] chamfer
- Wingwall will not hang level. Adjust cable lengths as required



CON/SPAN®
BRIDGE SYSTEMS
3100 Research Blvd.
P.O. Box 20296
Dayton, Ohio 45420-0296
(609) 526-3999

Offices:
Dayton, OH (937) 254-2233
fax (937) 254-8305
Charlotte, NC (704) 548-8420
Sacramento, CA (916) 787-8701
Albany, NY (518) 371-2871

CON/SPAN® is a patented system and the furnishing of this drawing does not constitute an express or implied license.

Revisions:	
No.	Date
1	
2	
3	
4	

Sheet Title: WINGWALL WW4C SHOP DRAWING

Producer: CONCRETE SYSTEMS, INC. NEW ENGLAND 800-342-3374

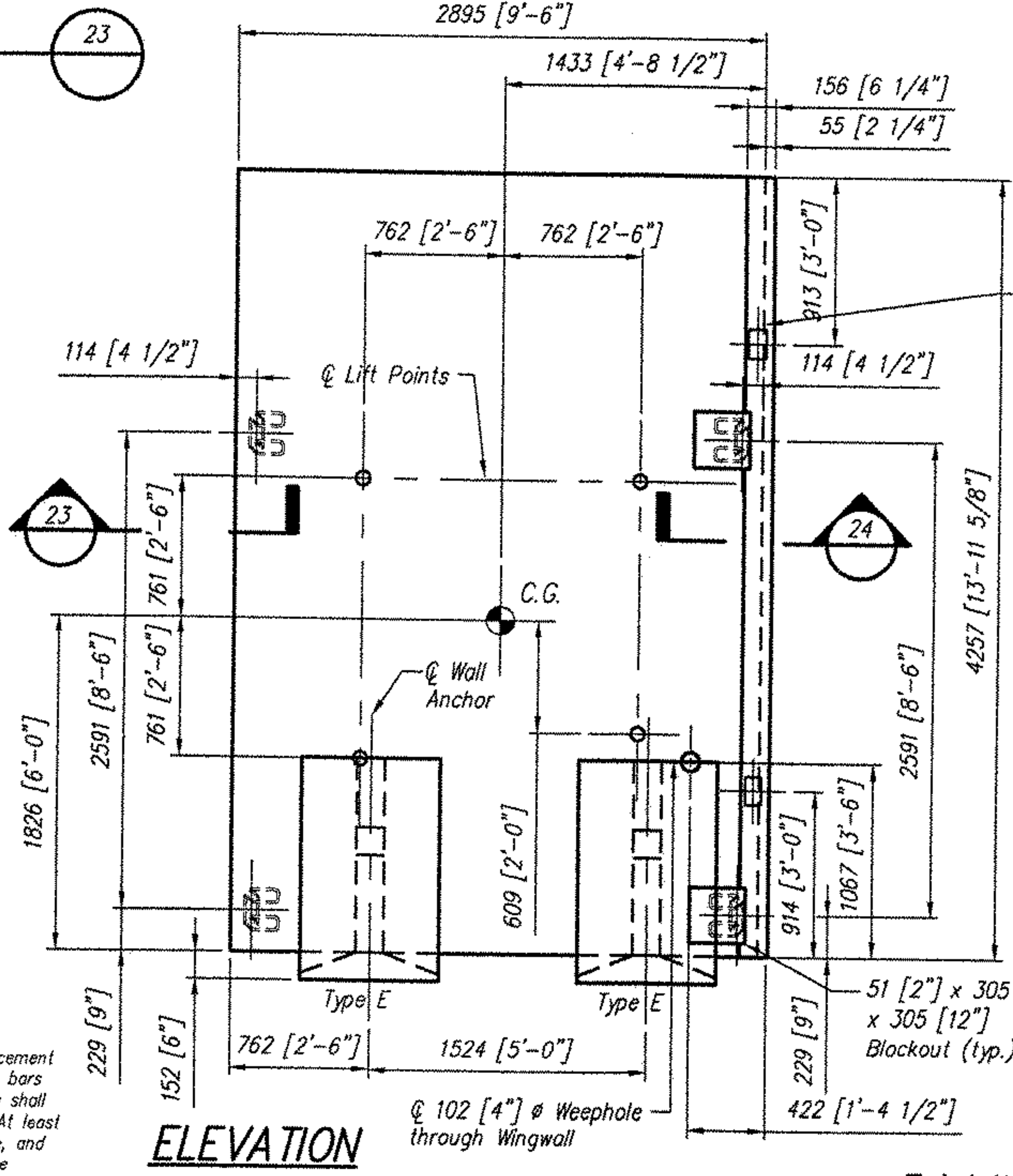
VERMONT
VT. RTE. 121
BRIDGE NO: 7

ROCKINGHAM

Des. By: K/JG	Job No. 11415
Drawn By: J/L	Sheet No. S26
Chk'd By: JVP	Date: 6/22/04

Wingwall	
Concrete	Reinf. Steel
28-day: 34.5 MPa [5000 psi]	413.5 MPa [60,000 psi] epoxy coated

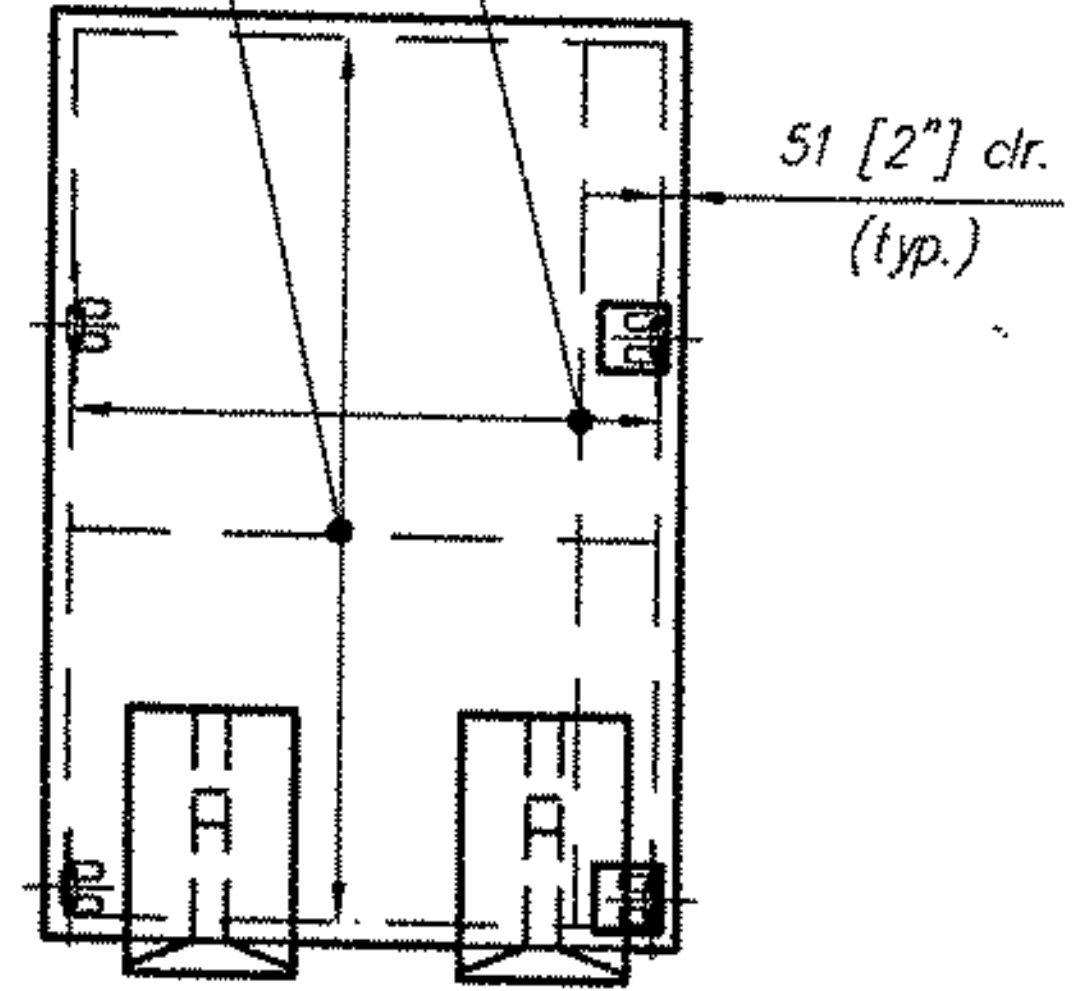
Wherever the reinforcing is cut for the placement of lift holes or other blockouts, reinforcing bars or wires of equivalent cross-sectional area shall be placed symmetrically around the hole. At least one bar must be on each side of the hole, and the development length of the bar must be achieved on either side of the cut.



1/2" Thick expansion board pad attached to wingwall with construction adhesive (typ.)

Vertical Bars:
16M [#5] @ 305 [1'-0"] o.c. max. front side
19M [#6] @ 229 [9"] o.c. max. anchor side

Horizontal Bars:
16M [#5] @ 305 [1'-0"] o.c. max. each face (typ.)



REINFORCING DETAIL
(See Section - Sheet S27)

Total Weight = 11.2 Metric Tons [12.3 Tons]