

# SPECIFICATIONS FOR MANUFACTURE AND INSTALLATION OF CON/SPAN® BRIDGE SYSTEMS

## 1. DESCRIPTION

This work shall consist of constructing a CON/SPAN® bridge in accordance with these specifications and in reasonably close conformity with the lines, grades, design and dimensions shown on the plans or as established by the Engineer. In situations where two or more specifications apply to this work, the most stringent requirements shall govern.

## 2. TYPES

Precast reinforced concrete CON/SPAN® bridge units manufactured in accordance with this specification shall be designed by span and rise. Precast reinforced concrete CON/SPAN® wingwalls and headwalls manufactured in accordance with this specification shall be designated by length, height, and deflection angle.

## 3. MATERIALS - CONCRETE

The concrete for the culverts shall be air-entrained when installed in areas subject to freeze-thaw conditions, composed of portland cement, fine and coarse aggregates, admixtures and water. Air-entrained concrete shall contain 8 ± 2 percent air. The air entraining admixture shall conform to AASHTO M164.

- 3.1 Portland Cement - Shall conform to the requirements of ASTM Specifications C150-Type I, Type II, or Type III cement.
- 3.2 Coarse Aggregate - Shall consist of stone having a maximum size of 25mm (1"). Aggregate shall meet requirements for ASTM C33.
- 3.3 Water Reducing Admixture - The manufacturer may submit for approval by the Engineer, a water-reducing admixture for the purpose of increasing workability and reducing the water requirement for the concrete.
- 3.4 Calcium Chloride - The addition to the mix of calcium chloride or admixtures containing calcium chloride will not be permitted.

## 4. MATERIALS - STEEL REINFORCEMENT AND HARDWARE

All reinforcing steel for the culverts shall be fabricated and placed in accordance with the detailed shop drawings submitted by the manufacturer.

- 4.1 Steel Reinforcement - Reinforcement shall consist of welded wire fabric conforming to ASTM Specification A 185 or A 497, or deformed billet steel bars conforming to ASTM Specification A 615, Grade 60. Longitudinal distribution reinforcement may consist of welded wire fabric or deformed billet steel bars.
- 4.2 Hardware: Bolts and threaded rods for wingwall connections shall conform to ASTM A 307. Nuts shall conform to AASHTO M 292 (ASTM A 194) Grade 2H. All bolts, threaded rods and nuts used in wingwall connections shall be mechanically zinc coated in accordance with ASTM B 695 Class 50.

Structural Steel for wingwall connection plates and plate washers shall conform to AASHTO M 270 (ASTM A 709) Grade 50 and shall be hot dip galvanized as per AASHTO M 111 (ASTM A 123).

Inserts for wingwalls shall be 1" diameter Two-Bolt Preset Wingwall Anchors as manufactured by Dayton/Richmond Concrete Accessories, Mansfield, Ohio, (800) 745-3700.

Female Loop Inserts shall be F-64 Ferrule Loop Inserts as manufactured by Dayton/Richmond Concrete Accessories, Mansfield, Ohio, (800) 745-3700.

Hook Bolts used in attached headwall connections shall be ASTM A 307.

Inserts for detached headwall connections shall be AISI Type 304 stainless steel, F-59 Expanded Coil Inserts as manufactured by Dayton/Richmond Concrete Accessories, Mansfield, Ohio, (800) 745-3700. Coil rods and nuts used in headwall connections shall be AISI Type 304 stainless steel. Washers used in headwall connections shall be either AISI Type 304 stainless steel plate washers or AASHTO M 270 (ASTM A 709) Grade 39 plate washers hot dip galvanized as per AASHTO M 111 (ASTM A 153).

Reinforcing bar splices shall be made using the Dowel Bar Splicer System as manufactured by Dayton/Richmond Concrete Accessories, Mansfield, Ohio, (800) 745-3700, and shall consist of the Dowel Bar Splicer (DB-SAE) and Dowel-In (DI).

## 5. MANUFACTURE

- 5.1 Mixture - The aggregates, cement and water shall be proportioned and mixed in a batch mixer to produce a homogeneous concrete meeting the strength requirements of this specification. The proportion of portland cement in the mixture shall not be less than 564 pounds (6 sacks) per cubic yard of concrete.
- 5.2 Curing - The precast concrete culvert units shall be cured for a sufficient length of time so that the concrete will develop the specified compressive strength in 28 days or less. Any one of the following methods of curing or combinations thereof shall be used:
  - 5.2.1 Steam Curing - The culverts may be low pressure, steam cured by a system that will maintain a moist atmosphere.
  - 5.2.2 Water Curing - The culverts may be water cured by any method that will keep the sections moist.
  - 5.2.3 Membrane Curing - A sealing membrane conforming to the requirements of ASTM Specification C 309 may be applied and shall be left intact until the required concrete compressive strength is attained. The concrete temperature at the time of application shall be within ± 10 degrees F of the atmospheric temperature. All surfaces shall be kept moist prior to the application of the compounds and shall be damp when the compound is applied.
- 5.3 Forms - The forms used in manufacture shall be sufficiently rigid and accurate to maintain the desired dimensions within the permissible variations given in Section 7 of these specifications. All casting surfaces shall be of a smooth material.
- 5.4 Handling - Handling devices or hoists shall be permitted in each culvert for the purpose of handling and setting.

- 5.5 Storage - The precast elements shall be stored in such a manner to prevent cracking or damage. The units shall not be moved until the concrete compressive strength has reached a minimum of 2500 psi, and they shall not be stored in an upright position until the concrete compressive strength is a minimum of 4,000 psi.

## 6. DESIGN

- 6.1 The precast element dimension and reinforcement details shall be as prescribed in the plan and the shop drawings provided by the manufacturer, subject to the provisions of Section 7, below. The minimum concrete compressive strength shall be as shown on the shop drawings. The minimum steel yield strength shall be 60,000 psi, unless otherwise noted on the shop drawings.
- 6.2 The precast elements are designed in accordance with the "Standard Specifications for Highway Bridges" 16th Edition, adopted by the American Association of State Highway and Transportation Officials, 1986, as amended by the 1997, 1998, 1999, and 2000 Interim Revisions. A minimum of one foot of cover above the crown of the bridge units is required in the installed condition. (Unless noted otherwise on the shop drawings and designed accordingly.)
- 6.3 Placement of Reinforcement in Precast Bridge Units - The cover of concrete over the outside circumferential reinforcement shall be 2 inches minimum. The cover of concrete over the inside circumferential reinforcement shall be 1 1/2 inches minimum, unless otherwise noted on the shop drawings. The minimum steel yield strength shall be 60,000 psi. Wires shall not be less than one inch nor more than two inches from the ends of each section. Reinforcement shall be assembled utilizing single or multiple layers of welded wire fabric (not to exceed 3 layers), supplemented with a single layer of deformed billet-steel bars, when necessary. Welded wire fabric shall be composed of circumferential and longitudinal wires meeting the spacing requirements of 6.6, below, and shall contain sufficient longitudinal wires extending through the bridge unit to maintain the shape and position of the reinforcement. Longitudinal distribution reinforcement may be welded wire fabric or deformed billet-steel bars and shall meet the spacing requirements of 6.8, below. The ends of the longitudinal distribution reinforcement shall be not more than 3 inches and not less than 1 1/2 inches from the ends of the bridge unit.
- 6.4 Placement of Reinforcement for Precast Wingwalls and Headwalls - The cover of concrete over the longitudinal and transverse reinforcement shall be 2 inches minimum. The clear distance from the end of each precast element to the end transverse reinforcing steel shall not be less than one inch nor more than two inches. Reinforcement shall be assembled utilizing a single layer of welded wire fabric, or a single layer of deformed billet-steel bars. Welded wire fabric shall be composed of transverse and longitudinal wires meeting the spacing requirements of 6.7, below, and shall contain sufficient longitudinal wires extending through the element to maintain the shape and position of the reinforcement. Longitudinal distribution reinforcement may be welded wire fabric or deformed billet-steel bars and shall meet the spacing requirements of 6.7, below. The ends of the longitudinal reinforcement shall be not more than 3 inches and not less than 1 1/2 inches from the ends of the walls.

- 6.5 Bending of Reinforcement for Precast Bridge Units - The outside and inside circumferential reinforcing steel for the corners of the bridge shall be bent to such an angle that is approximately equal to the configuration of the bridge's outside corner.
- 6.6 Laps, Welds, and Spacing for Precast Bridge Units - Tension splices in the circumferential reinforcement shall be made by lapping. Laps may be tack welded together for assembly purposes. For smooth welded wire fabric, the overlap shall meet the requirements of AASHTO 8.30.2 and 8.32.6. For deformed welded wire fabric, the overlap shall meet the requirements of AASHTO 8.30.1 and 8.32.5. The overlap of welded wire fabric shall be measured between the outer most longitudinal wires of each fabric sheet. For deformed billet-steel bars, the overlap shall meet the requirements of AASHTO 8.25. For splices between tension splices, the overlap shall be a minimum of 12" for welded wire fabric or deformed billet-steel bars. The spacing center to center of the circumferential wires in a wire fabric sheet shall be not less than 2 inches nor more than 4 inches. The spacing center to center of the longitudinal wires shall be not more than 8 inches. The spacing center to center of the longitudinal distribution steel for exterior walls of reinforcing in the top slab shall be not more than 16 inches.
- 6.7 Laps, Welds, and Spacing for Precast Wingwalls and Headwalls - Splices in the reinforcement shall be made by lapping. Laps may be tack welded together for assembly purposes. For smooth welded wire fabric, the overlap shall meet the requirements of AASHTO 8.30.2 and 8.32.6. For deformed welded wire fabric, the overlap shall meet the requirements of AASHTO 8.30.1 and 8.32.5. The spacing center-to-center of the wires in a wire fabric sheet shall be not less than 2 inches nor more than 8 inches.

## 7. PERMISSIBLE VARIATIONS

- 7.1 Bridge Units
  - 7.1.1 Internal Dimensions - The internal dimension shall vary not more than 1% from the design dimensions nor more than 1-1/2 inches whichever is less. The haunch dimensions shall vary not more than 3/4 inch from the design dimension.
  - 7.1.2 Slab and Wall Thickness - The slab and wall thickness shall be not less than that shown in the design by more than 1/4 inch. A thickness more than that required in the design shall not be cause for rejection.
  - 7.1.3 Length of Opposite Surfaces - Variations in laying lengths of two opposite surfaces of the bridge unit shall not be more than 1/2 inch in any section, except where beveled ends for laying of curves are specified by the purchaser.
  - 7.1.4 Length of Section - The underlap in length of a section shall not be more than 1/2 inch in any bridge unit.
  - 7.1.5 Position of Reinforcement - The maximum variation in position of the reinforcement shall be ± 1/2 inch. In no case shall the cover over the reinforcement be less than 1 1/2 inches for the outside circumferential steel or be less than 1 inch for the inside circumferential steel as measured to the external or internal surface of the bridge. These tolerances or cover requirements do not apply to mating surfaces of the joints.

- 7.1.6 Area of Reinforcement - The areas of steel reinforcement shall be the design steel areas as shown in the manufacturer's shop drawings. Steel areas greater than those required shall not be cause for rejection. The permissible variation in diameter of any reinforcement shall conform to the tolerances prescribed in the ASTM Specification for that type of reinforcement.

- 7.2 Wingwalls and Headwalls
  - 7.2.1 Wall Thickness - The wall thickness shall not vary from that shown in the design by more than 1/2 inch.
  - 7.2.2 Length/Height of Wall Sections - The length and height of the wall shall not vary from that shown in the design by more than 1/2 inch.
  - 7.2.3 Position of Reinforcement - The maximum variation in the position of the reinforcement shall be ± 1/2 inch. In no case shall the cover over the reinforcement be less than 1 1/2 inches.
  - 7.2.4 Size of Reinforcement - The permissible variation in diameter of any reinforcing steel shall conform to the tolerances prescribed in the ASTM Specification for that type of reinforcing. Steel area greater than that required shall not be cause for rejection.

## 8. TESTING AND INSPECTION

- 8.1 Type of Test Specimen - Concrete compressive strength shall be determined from compression tests made on cylinders or cores. For cylinder testing, a minimum of 4 cylinders shall be taken during each production run. For core testing, one core shall be cut from each of 3 precast elements selected at random from each production group. A production group shall be defined as 16 or fewer bridge units (of a particular size), wingwalls or headwalls in a continuous production run. For each continuous production run, each production group or fraction thereof shall be considered separately for the purpose of testing and acceptance. A production run shall be considered continuous if not interrupted for more than 3 consecutive days.
- 8.2 Compression Testing - Cylinders shall be made and tested as prescribed by the ASTM C 39 Specification. Cores shall be obtained and tested for compressive strength in accordance with the provisions of the ASTM C 497 Specification.
- 8.3 Acceptability of Cylinder Tests - When the average compressive strength of all cylinders tested is equal to or greater than the design compressive strength, and not more than 10% of the cylinders tested have a compressive strength less than the design concrete strength, and no cylinder tested has a compressive strength less than 80% of the design compressive strength, then the lot shall be accepted. When the compressive strength of the cylinders tested does not conform to this acceptance criteria, the acceptability of the lot may be determined as described in section 8.4, below. Failure of any of the 28-day test cylinders to meet 90 percent of the minimum compressive strength requirement can be cause for rejection.

- 8.4 Acceptability of Core Tests - The compressive strength of the concrete in each production group as defined in 8.1 is acceptable when the average core test strength is equal to or greater than the design concrete strength. When the compressive strength of the core tested is less than the design concrete strength, the precast element from which that core was taken may be rejected. Two precast elements from the same production group shall be selected at random and one core shall be taken from each. If the compressive strength of both cores is equal to or greater than the design concrete strength, the compressive strength of the remainder of that group is acceptable. If the compressive strength of either of the two cores tested is less than the design concrete strength, the remainder of the group shall be rejected or, at the option of the manufacturer, each precast element of the remainder of the group shall be corred and accepted individually, and any of these elements that have cores with less than the design concrete strength shall be rejected.
  - 8.4.1 When the compressive strength of any core is less than the design concrete strength, the precast element from which that core was taken shall be rejected. Two precast elements from the same production group shall be selected at random and one core shall be taken from each. If the compressive strength of both cores is equal to or greater than the design concrete strength, the compressive strength of the remainder of that group is acceptable. If the compressive strength of either of the two cores tested is less than the design concrete strength, the remainder of the group shall be rejected or, at the option of the manufacturer, each precast element of the remainder of the group shall be corred and accepted individually, and any of these elements that have cores with less than the design concrete strength shall be rejected.
  - 8.4.2 Plugging Core Holes - The core holes shall be plugged and sealed by the manufacturer in a manner such that the elements will meet all of the test requirements of this specification. Precast elements so sealed shall be considered satisfactory for use.
  - 8.4.3 Test Equipment - Every manufacturer furnishing culverts under this specification shall furnish all facilities and personnel necessary to carry out the test required.

## 9. JOINTS

The bridge units shall be produced with flat butt ends. The ends of the bridge units shall be such that when the sections are laid together they will make a continuous line of with a smooth interior face of appreciable irregularities, all compatible with the permissible variations in Section 7, above. The joint width shall not exceed 3/4 inches.

## 10. WORKMANSHIP AND FINISH

The bridge units, wingwalls, and headwalls shall be substantially free of fractures. The ends of the bridge units shall be normal to the walls and centerline of the bridge section, within the limits of the variations given in section 7, above, except where beveled ends are specified. The faces of the wingwalls and headwalls shall be parallel to each other, within the limits of variations given in section 7, above. The surface of the precast elements shall be a smooth steel form or troweled surface. Trapped air pockets causing surface defects shall be considered as part of a smooth, steel form finish.

## 11. REPAIRS

Precast elements may be repaired, if necessary, because of imperfections in manufacture or handling damage and will be acceptable if, in the opinion of the purchaser, the repairs are sound, properly finished and cured, and the repaired section conforms to the requirements of this specification.

## 12. INSPECTION

The quality of materials, the process of manufacture, and the finished culverts shall be subject to inspection by the purchaser.

## 13. REJECTION

The precast elements shall be subject to rejection on account of any of the specification requirements. Individual precast elements may be rejected because of any of the following:

- 13.1 Fractures or cracks passing through the wall, except for a single end crack that does not exceed one half the thickness of the wall.
- 13.2 Defects that indicate proportioning, mixing, and molding not in compliance with Section 5 of these specifications.
- 13.3 Honeycombed or open textures.
- 13.4 Damaged ends, where such damage would prevent making a satisfactory joint.

## 14. MARKING

Each bridge unit shall be clearly marked by waterproof paint. The following shall be shown on the inside of the vertical leg of the bridge section:  
 Bridge Span X Bridge Rise  
 Date of Manufacture  
 Name or trademark of the manufacturer

## 15. CONSTRUCTION REQUIREMENTS

- 15.1 Footings - The bridge units and wingwalls shall be installed on either precast or cast-in-place concrete footings. The design size and elevation of the footings shall be as determined by the Engineer. A three inch deep keyway shall be formed in the top surface of the bridge footing three inches clear of the inside and outside faces of the bridge units, unless specified otherwise on the plans. No keyway is required in the wingwall footings, unless otherwise specified on the plans. The footings shall be given a smooth finish and shall meet a compressive strength of 2,000 psi before placement of the bridge and wingwall elements. The completed footing surface shall be constructed in accordance with grades shown on the plans. When tamped with a 10 foot straight edge, the surface shall not vary more than 1/4 inch in 10 feet. If a precast concrete footing is used, the contractor shall prepare a 4 inch thick base layer of compacted granular material the full width of the footing prior to placing the precast footing.
- 15.2 Placement of the Bridge Units, Wingwalls, and Headwalls - The bridge units, wingwalls, and headwalls shall be placed as shown on the Engineer's plan drawings. Special care shall be taken in setting the elements to the true line and grade. The bridge units and wingwalls shall be set on 6" X 6" flooring or steel slabs. A minimum of 1/2 inch gap shall be provided between the inside and the bottom of the bridge's vertical legs or the wingwall. The gap shall be filled with cement grout (Portland cement and water or cement mortar composed of one part Portland cement and three parts sand, by volume, and water).
- 15.3 External Protection of Joints - The butt joint made by two adjoining bridge units shall be covered with a 7/8" x 1 3/8" preformed bituminous joint sealant and a minimum of 3 inch wide joint wrap. The surface shall be free of dirt before applying the joint material. A primer compatible with the joint wrap to be used shall be applied for a minimum width of nine inches on each side of the joint. The exterior wrap shall be either EZ-WRAP RUBBER BY PRESS-SEAL GASKET CORPORATION, SEAL WRAP BY MAR MAC MANUFACTURING CO. INC. or approved equal. The joint shall be covered continuously from the bottom of one bridge section leg, across the top of the arch and to the opposite bridge section leg. Any laps that result in the joint wrap shall be a minimum of six inches long with the overlap running downhill.
- 15.4 Backfill - Backfill shall be considered as all replaced excavation and new embankment adjacent to the CON/SPAN® bridge units, wingwalls, and headwalls. The precast construction and material specifications which include the specifications for excavation for structures and roadway excavation and embankment construction, shall apply except as modified in this section.
  - No backfill shall be placed against any structural elements until they have been approved by the Engineer.
  - Backfill against a waterproofed surface shall be placed carefully to avoid damage to the waterproofing material.
  - Mechanical tampers or approved compacting equipment shall be used to compact all backfill and embankment immediately adjacent to each side and over the top of each bridge unit until it is covered to a minimum depth of one foot, unless the design fill height is less than 1'-0". The backfill within the Critical Backfill Zone (shown in the diagrams below) shall be placed in lifts of eight inches or less (loose depth). Heavy compaction equipment shall not be operated in this area or over the bridge until it is covered to a depth of one foot, unless the design fill height is less than 1'-0".
  - Lightweight dozers and graders may be operated over bridge units having one foot of compacted cover, but heavy earth moving equipment (larger than a D-4 Dozer weighing in excess of 12 tons and having back pressure of eight psi or greater) shall require two feet of cover unless the design cover is less than two feet. In no case shall equipment operating in excess of the design load (HS20 or HS25) be permitted over the bridge units unless approved by CON/SPAN®.

During the backfilling operation, care shall be taken to keep the joint wrap in its proper location over the joint.

Any additional fill and subsequent excavation required to provide this minimum cover shall be made at no additional cost to the project.

As a precaution against introducing unbalanced stresses in the bridge, when placing backfill at no time shall the difference between the heights of fill on opposite sides of the bridge exceed 24".

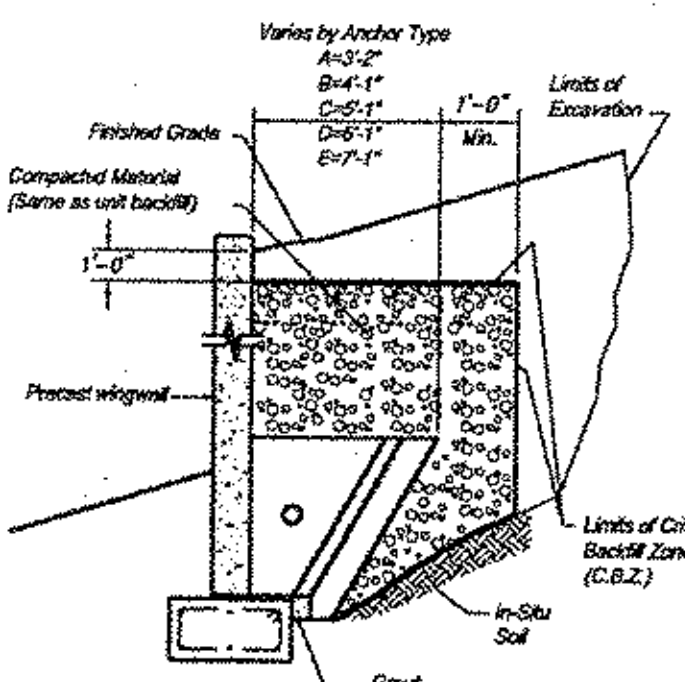
Backfill in front of wingwalls shall be carried to ground lines shown in the plans.

For fill heights over 12 feet, no backfilling may begin until a backfill compaction testing plan has been coordinated with and approved by CON/SPAN® Bridge Systems. Cost of the backfill compaction testing shall be included in the cost of the precast units. This included cost applies only to projects with fill heights over 12 feet (as measured from top crown of arch to finished grade).

## 16. QUALITY ASSURANCE

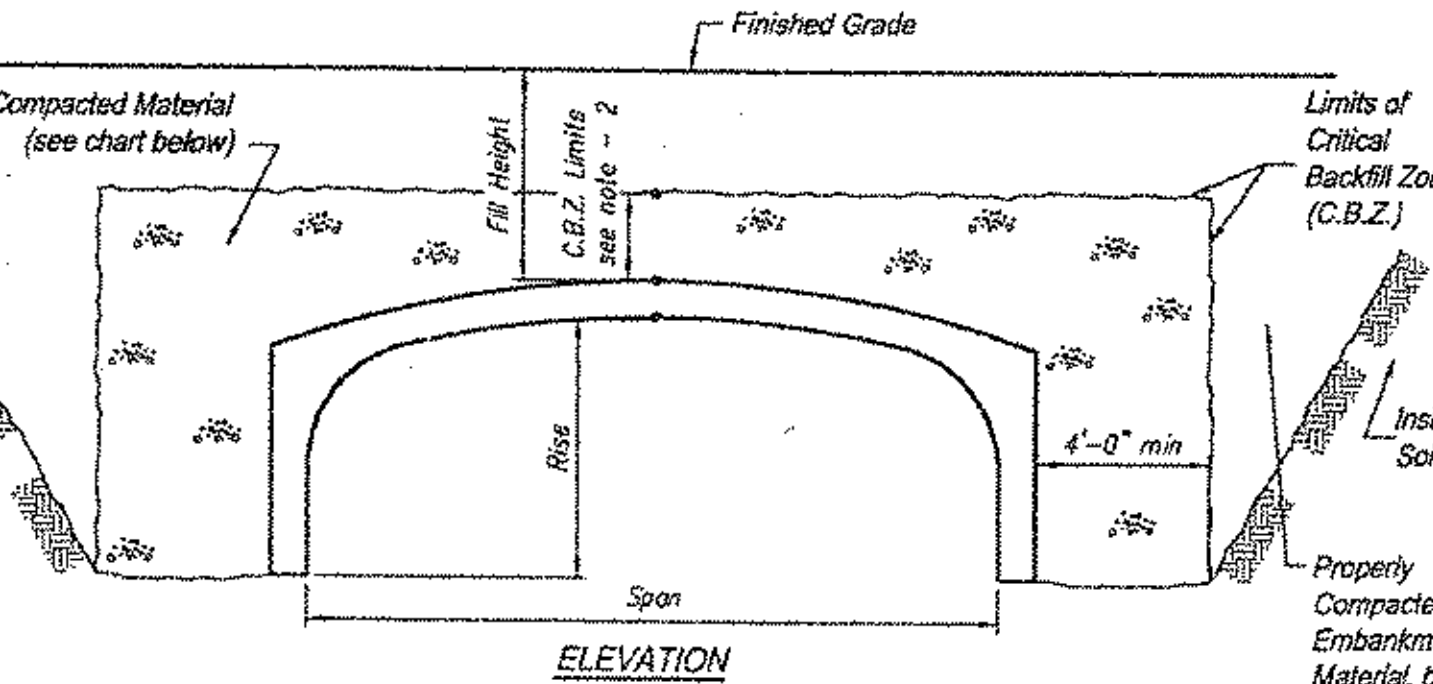
The Precaster shall demonstrate adherence to the standards set forth in the NPCA Quality Control Manual. The Precaster shall meet either Section 16.1 or 16.2.

- 16.1 Certification - The Precaster shall be certified by the Precast/Prestressed Concrete Institute Plant Certification Program or the National Precast Concrete Association's Plant Certification Program prior to and during production of the products covered by this specification.
- 16.2 Qualifications, Testing and Inspection
  - 16.2.1 The Precaster shall have been in the business of producing precast concrete products similar to those specified for a minimum of three years. He shall maintain a permanent quality control department or retain an independent testing agency on a continuing basis. The agency shall issue a report, certified by a licensed engineer, detailing the ability of the Precaster to produce quality products consistent with industry standards.
  - 16.2.2 The Precaster shall show that the following tests are performed in accordance with the ASTM standards indicated. Tests shall be performed for each 150 cubic yards of concrete placed, but not less frequently than once per production run, as defined in §3 of these specifications.
    - 16.2.2.1 Air Content: C281 or C173
    - 16.2.2.2 Compressive Strength: C39, C497
  - 16.2.3 The Precaster shall provide documentation demonstrating compliance with this section to CON/SPAN® Bridge Systems at regular intervals or upon request.
  - 16.2.4 The Owner may place an inspector in the plant when the products covered by this specification are being manufactured.



WINGWALL BACKFILL REQUIREMENTS

Group Classification	BACKFILL DESCRIPTION (AASHTO M 145-91)						
	A-1	A-1-b	A-3	A-2-4	A-2-5	A-2-6	A-2-7
Sieve Analysis, Percent Passing (100% Passing 3" Sieve)							
No. 10	30 max.						
No. 40	50 max.	50 max.	51 min.				
No. 200	15 max.	25 max.	10 max.	35 max.	35 max.	35 max.	36 min.
Characteristics of Fraction Passing							
No. 40							
Liquid Limit	6 max.		N.P.	40 max.	41 min.	40 max.	40 max.
Plasticity Index				10 max.	10 max.	11 min.	10 max.
Usual Types of Significant Constituent Materials	Stone Fragments, Gravel & Sand		Fine Sand	Silty or Clayey Gravel and Sand			Silty Soils
General Rating as Subgrade			Excellent to Good				Fair to Poor



- NOTES
1. SEE CON/SPAN® SPECIFICATIONS SECTION 15.4 FOR BACKFILL SPECIFICATIONS.
  2. FOR FILL HEIGHTS GREATER THAN 2'-0", C.B.Z. LIMIT SHALL BE 2'-0" ABOVE ARCH CROWN. FOR FILL HEIGHTS LESS THAN 2'-0", THE FINISHED GRADE SHALL BE THE BOUNDARY LINE FOR THE C.B.Z.
  3. BACKFILLING OPERATIONS WITHIN THE C.B.Z. SHALL BE PERFORMED IN LIFTS OF 8" OR LESS (LOOSE DEPTH).
  4. MAXIMUM DRY DENSITY SHALL BE DETERMINED BY AASHTO T-99 OR OTHER APPROVED METHODS.
  5. BACKFILL SHALL BE COMPACTED IN LAYERS UNTIL THE DENSITY IS NOT LESS THAN 85% OF THE MAXIMUM DRY DENSITY.

SPAN	FILL HEIGHT	ACCEPTABLE MATERIAL INSIDE C.B.Z.	ACCEPTABLE MATERIAL OUTSIDE C.B.Z.
3'-0"	≥ 12'-0"	A1, A3	
3'-0"	< 12'-0"	A1, A2, A3, A4	
> 24'-0"	ALL	A1, A3	

BACKFILL REQUIREMENTS

NOTICE: The design and information shown on this drawing is provided as a service to the project owner, engineer and contractor by CON/SPAN® Bridge Systems, Inc. No part of this drawing may be used, reproduced, or modified in any manner without the written authorization of CON/SPAN® Bridge Systems, Inc. Any such use, reproduction, or modification of this drawing without the written authorization of CON/SPAN® Bridge Systems, Inc. may result in liability for damages. CON/SPAN® Bridge Systems, Inc. from and against any and all claims, damages, costs and expenses, but not limited to, reasonable attorney's fees, arising from such use, reproduction or modification.

NO.	DATE	REVISIONS
1		
2		
3		
4		
5		
6		
7		
8		

Provided Locally by:  
**CONCRETE SYSTEMS, INC.**  
 NEW ENGLAND  
 800-942-3374

**CON/SPAN® BRIDGE SYSTEMS**  
 3100 Peachtree Blvd., P.O. Box 20208 Dayton, Ohio 45420-0208  
 (937) 254-3700  
 (937) 254-2233  
 (937) 254-8588 FAX  
 (937) 254-8420  
 (919) 747-8761  
 (919) 371-2072 FAX  
 (919) 371-2071

VERMONT  
**VT. RTE. 121**  
**BRIDGE NO. 7**  
 ROCKINGHAM  
 Drawing No. C/S  
 Date 6/18/04  
 11415  
 C/S6