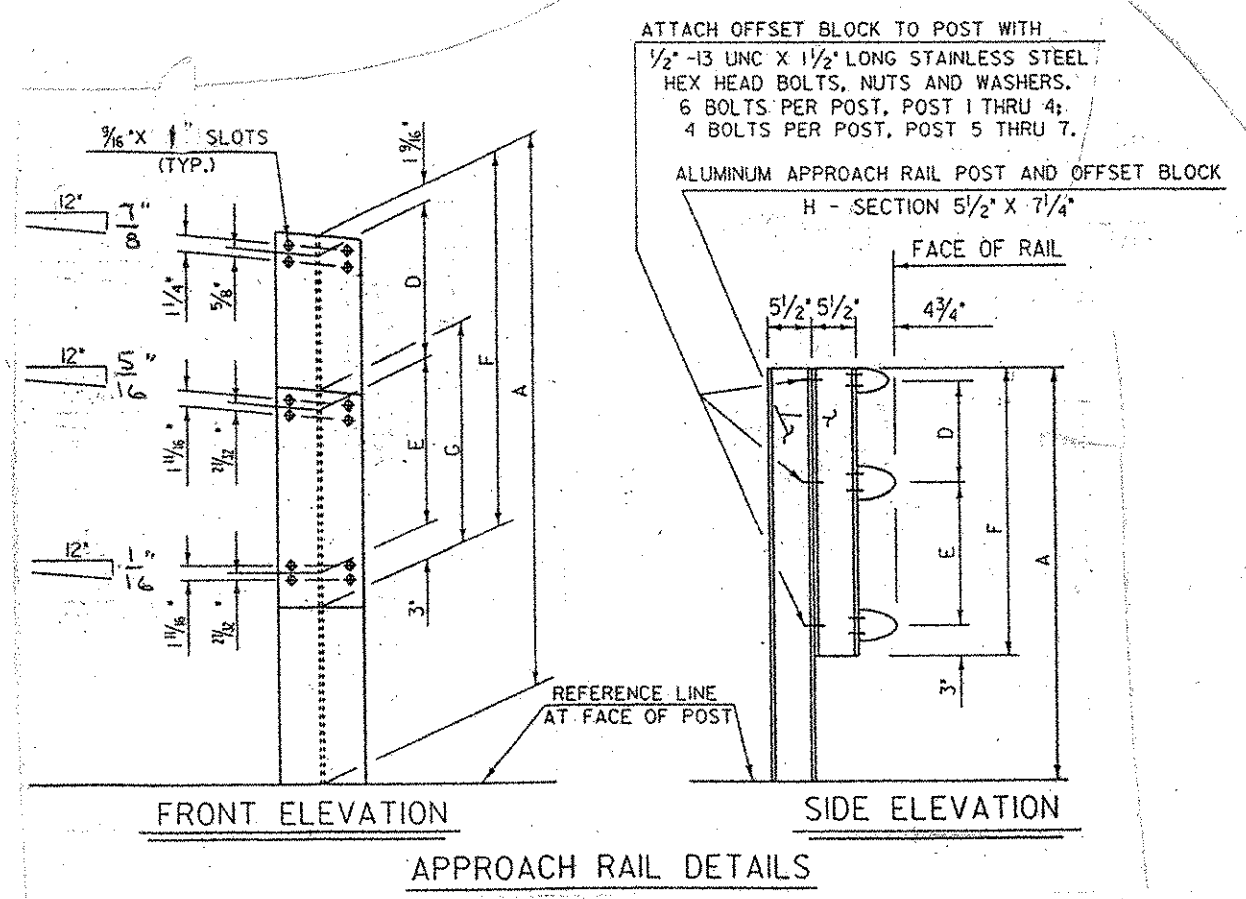
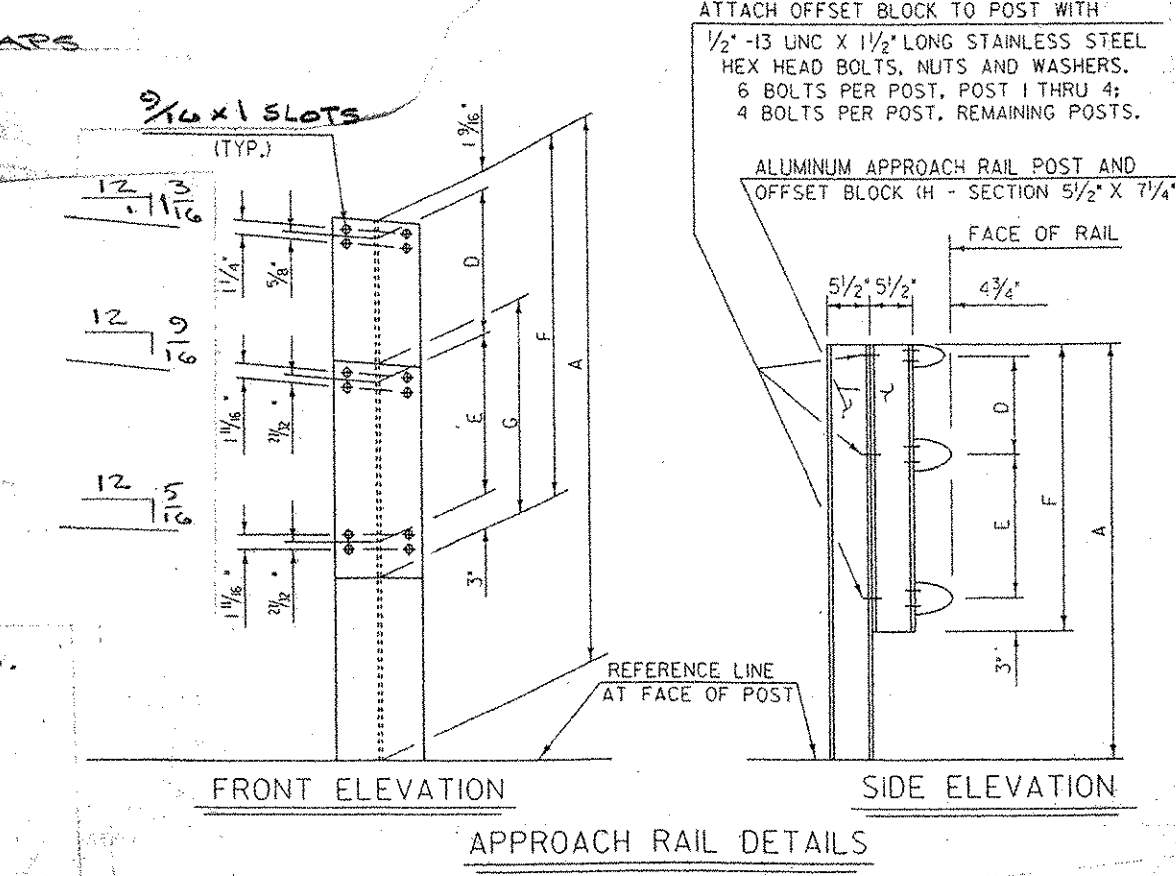
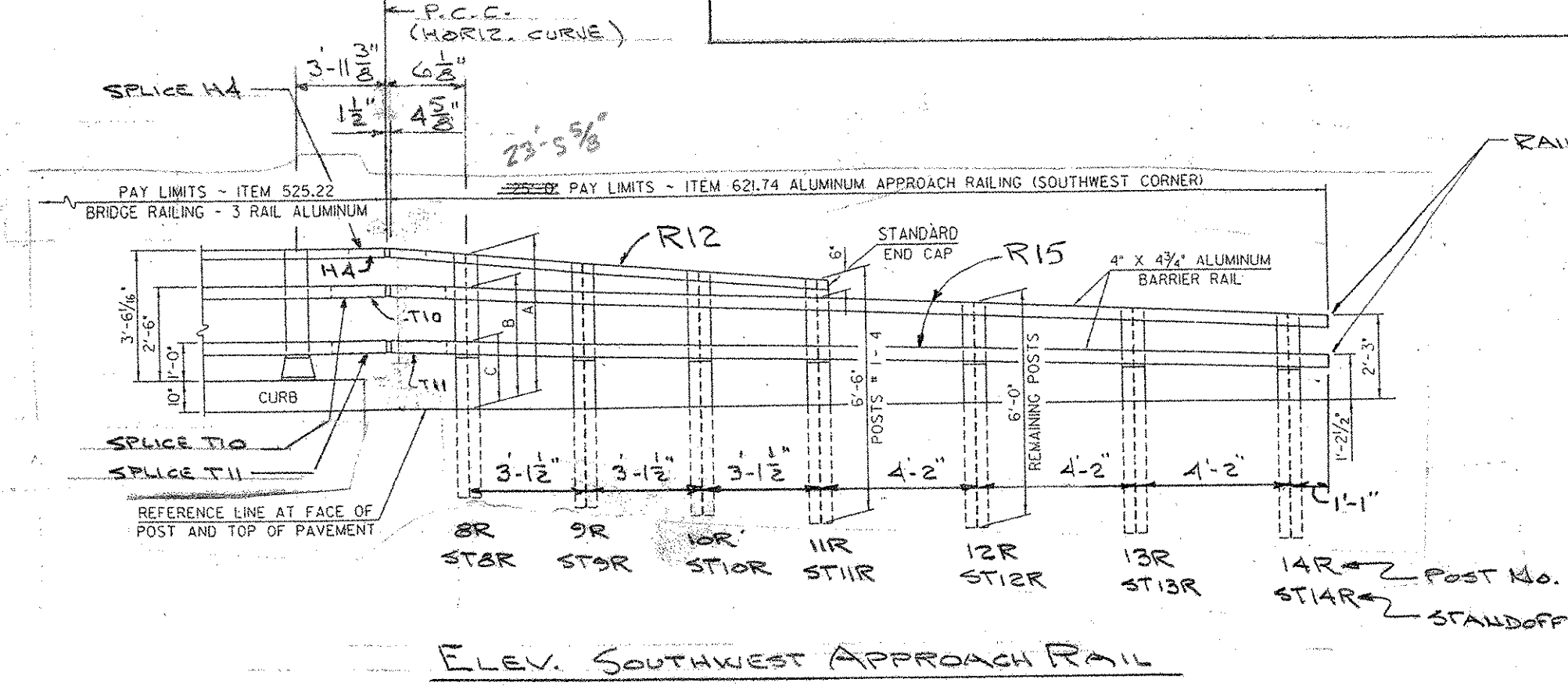


POST No.	RAIL HEIGHT DIMENSIONS			OFFSET BLOCK DIMENSIONS		
	A	B	C	D	E	F
1	4'-2 1/2"	3'-3 3/8"	1'-9 3/4"	1 1/4"	1'-5 1/2"	2'-9 3/4"
2	3'-9 3/8"	3'-2 3/8"	1'-9 3/4"	9/8"	1'-4 1/2"	2'-6 3/8"
3	3'-8 1/4"	3'-1 1/4"	1'-9 3/4"	8 3/4"	1'-3 1/2"	2'-4 1/4"
4	3'-6 1/2"	3'-0 3/4"	1'-9 3/4"	6 1/4"	1'-2 1/2"	2'-1 1/4"
5	2'-10 1/2"	1'-9 3/4"	1'-9 3/4"	1'-1 1/2"	1'-6 3/4"	1'-6 3/4"
6	2'-9 3/8"	1'-9 3/4"	1'-9 3/4"	1 1/4"	1'-0 3/4"	1'-5 3/4"
7	2'-8 1/4"	1'-8 3/4"	1'-9 3/4"	1 1/4"	1'-0 3/4"	1'-4 3/4"

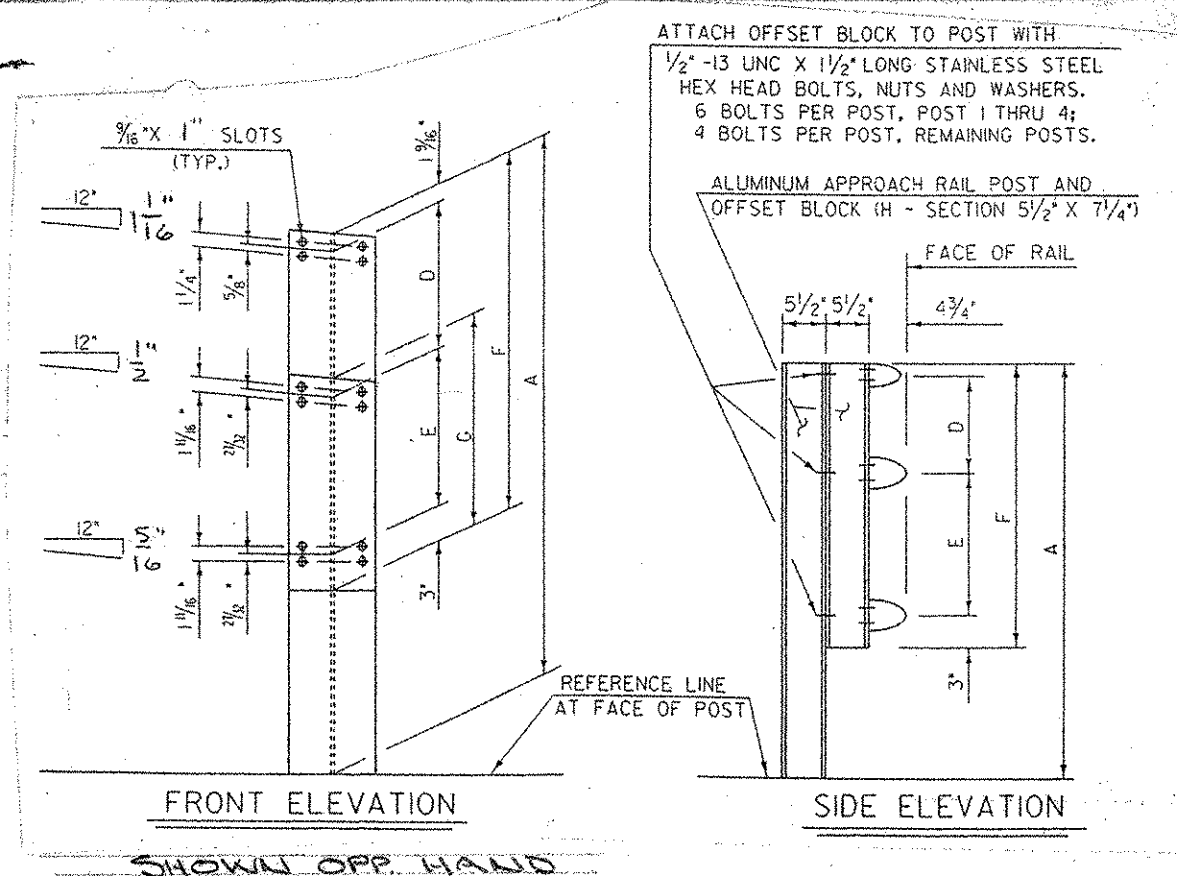
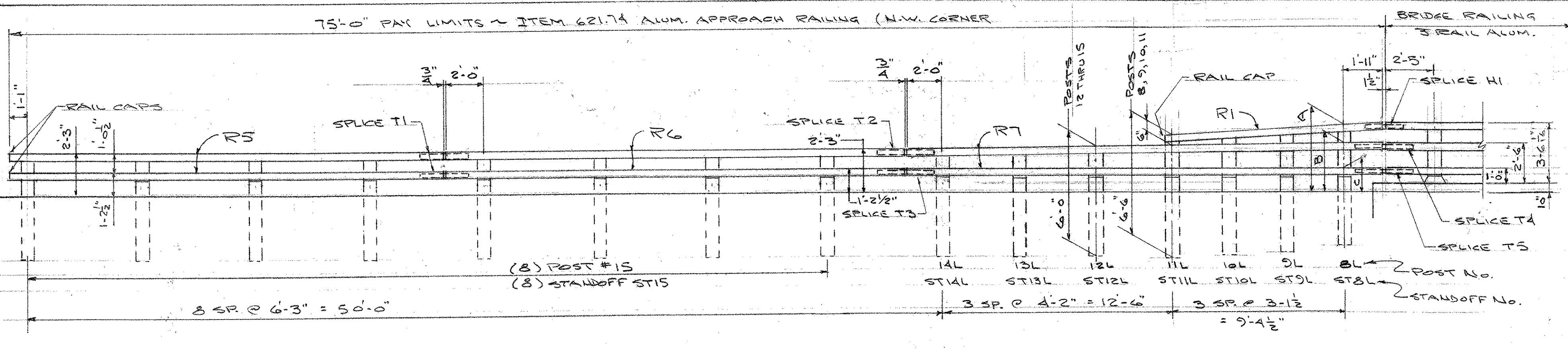


ELEV. AT APPROACH RAILING  
NORTHEAST AS SHOWN  
SOUTHEAST OPP. HAND

NOTE - DIM'S GIVEN ALONG FACE OF RAIL (TYP.)



POST No.	RAIL HEIGHT DIM'S			OFFSET BLOCK DIM'S			
	A	B	C	D	E	F	G
8R	4'-3 3/8"	3'-3 3/8"	1'-9 3/4"	1'-0 1/2"	1'-5 1/2"	2'-10 3/8"	5/8"
9R	3'-11 1/8"	3'-2 3/8"	1'-8 3/4"	10 5/16"	1'-5 3/8"	2'-8 3/8"	
10R	3'-8 1/4"	3'-0 3/8"	1'-7 3/4"	8 3/8"	1'-4 1/2"	2'-5 3/8"	
11R	3'-4 1/2"	2'-10 1/4"	1'-6 3/4"	6 1/2"	1'-3 3/4"	2'-2 3/8"	
12R		2'-8 1/4"	1'-5 1/2"		1'-2 3/4"	1'-7 3/4"	
13R		2'-5 1/2"	1'-4 1/2"		1'-1 1/2"	1'-6 3/4"	
14R		2'-3 1/8"	1'-2 3/8"		1'-0 3/4"	1'-5 3/4"	



POST No.	RAIL HEIGHT DIMENSIONS			OFFSET BLOCK DIMENSIONS			
	A	B	C	D	E	F	G
8L	4'-1 1/2"	3'-2 3/8"	1'-9 3/4"	8 3/4"	1'-5 1/2"	2'-9 3/4"	
9L	3'-10 3/8"	3'-1 1/4"	1'-8 3/4"	9 3/4"	1'-4 1/2"	2'-7 1/4"	
10L	3'-7 3/4"	2'-11 3/8"	1'-7 3/4"	8 1/2"	1'-4 1/2"	2'-4 1/4"	
11L	3'-4 1/2"	2'-10 1/4"	1'-6 3/4"	6 3/4"	1'-3 3/4"	2'-2 3/8"	
12L		2'-7 3/4"	1'-5 1/2"		1'-2 3/4"	1'-7 3/4"	
13L		2'-5 1/2"	1'-4 1/2"		1'-1 1/2"	1'-6 3/4"	
14L		2'-3 1/8"	1'-2 3/8"		1'-0 3/4"	1'-5 3/4"	
15		2'-3"	1'-2 1/2"		1'-0 1/2"	1'-5 1/2"	

MK	QUAN	DESCRIPTION	MK	QUAN	DESCRIPTION
P2	7	BRIDGE POST	SP2	7	STANDOFF
R2	1	APPR. POST	ST1R	1	
1L	1		ST1L	1	
2R	1		ST2R	1	
2L	1		ST2L	1	
3R	1		ST3R	1	
3L	1		ST3L	1	
4R	1		ST4R	1	
4L	1		ST4L	1	
5R	1		ST5R	1	
5L	1		ST5L	1	
6R	1		ST6R	1	
6L	1		ST6L	1	
7R	1		ST7R	1	
7L	1		ST7L	1	
8R	1		ST8R	1	
8L	1		ST8L	1	
9R	1		ST9R	1	
9L	1		ST9L	1	
10R	1		ST10R	1	
10L	1		ST10L	1	
11R	1		ST11R	1	
11L	1		ST11L	1	
12R	1		ST12R	1	
12L	1		ST12L	1	
13R	1		ST13R	1	
13L	1		ST13L	1	
14R	1		ST14R	1	
14L	1		ST14L	1	
15	3		ST15	3	
				7	POST PAD
H1	1	HANDRAIL SPLICE		7	ANCHOR BOLT
H2	1		#4	16	HANDRAIL CLAMP BAR
H3	1		#1	172	HANDRAIL CLAMP BAR
H4	1			4	HANDRAIL CAP
				3	BARRIER RAIL CAP
T1	2	BARRIER RAIL SPLICE		32	1/2\"/>

RECEIVED  
 OK'D BY G. BOY OK'D BY  
 8-30-04  
 AUG 25 2004  
 RESUBMIT APPROVED AS SHOWN  
 BY DATE

**AUCIELLO IRON WORKS INC**  
 560 MAIN ST. HUDSON, MA (978) 568-8382

VI AGENCY OF TRANSPORTATION  
 ROCKINGHAM # TH2-0103  
 TH.2 OVER BEAVER BROOK

ALUM. BRIDGE & APPROACH RAILING

SURFACE PREP: NONE FINISH: MILL FINISH

FOR: E.R. LAFAYETTE, INC.  
 DR: WM 8-2-04 DWG. NO.  
 CHK: B 8-18-04 BR-2836  
 JOB NO. AB20019-1001 SHEET 2 OF 7

ISSUE	DATE	DESCRIPTION
1	8-19-04	FOR APPROVAL