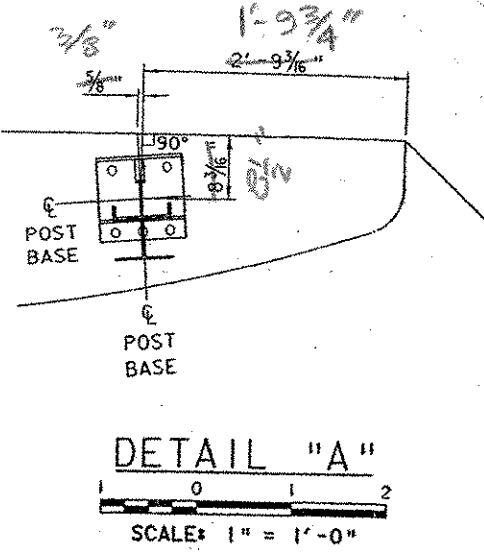
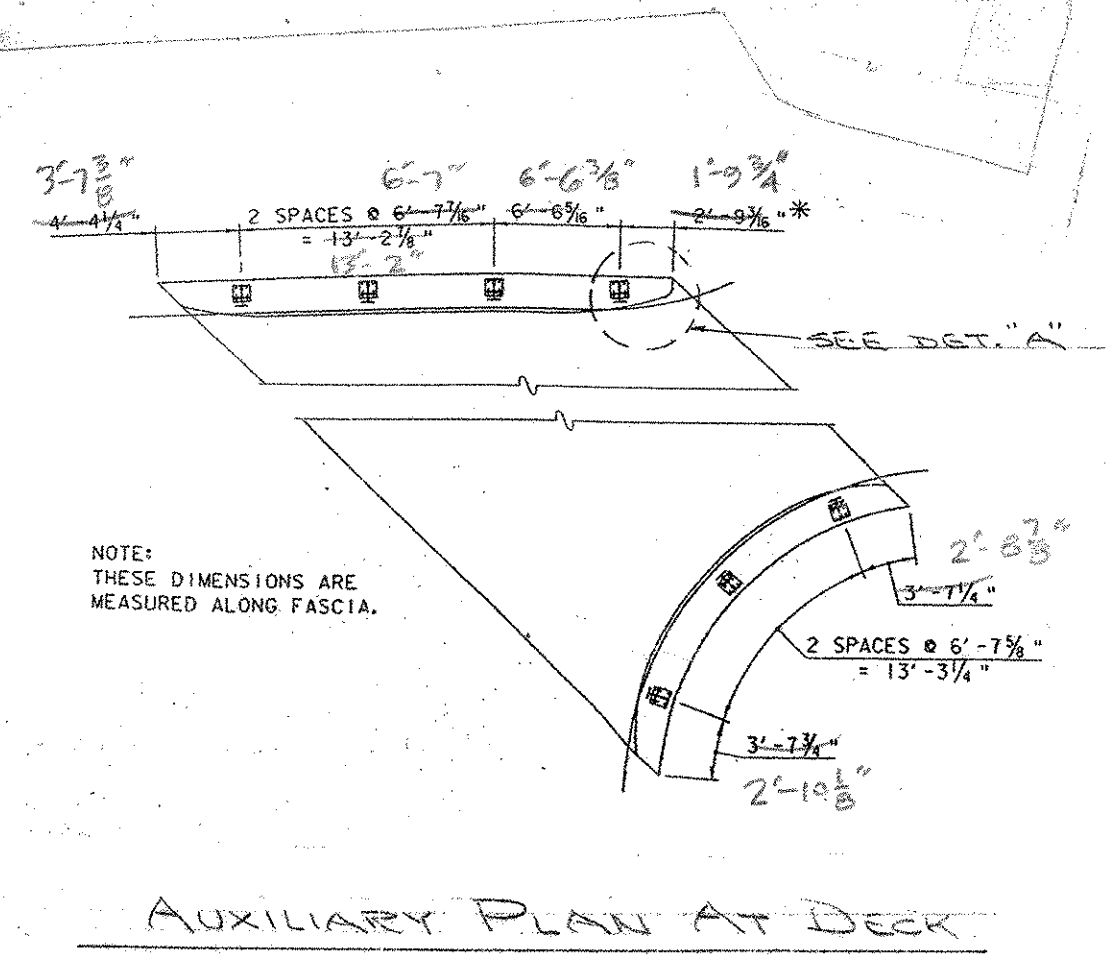
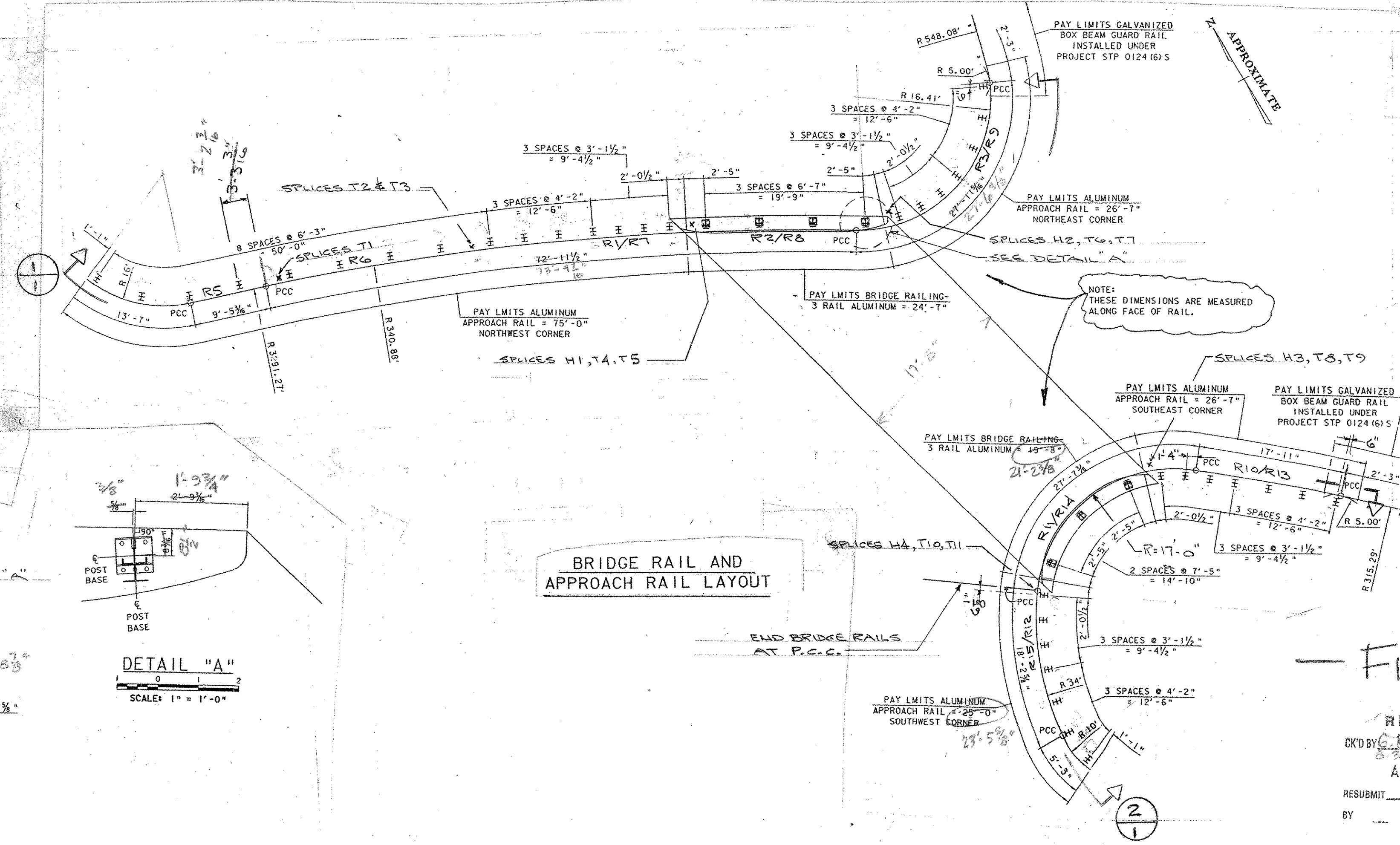
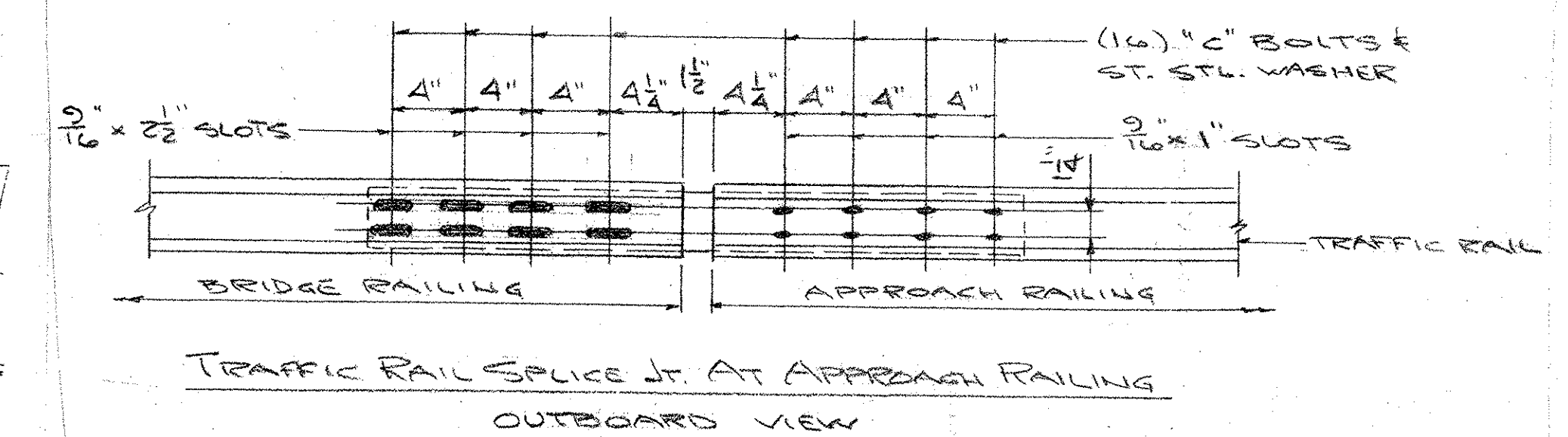
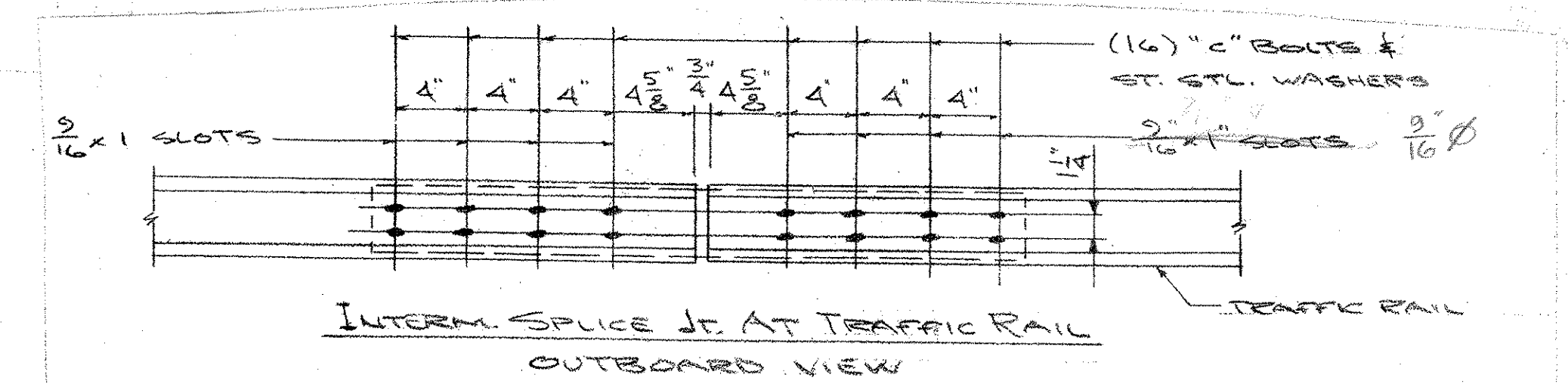
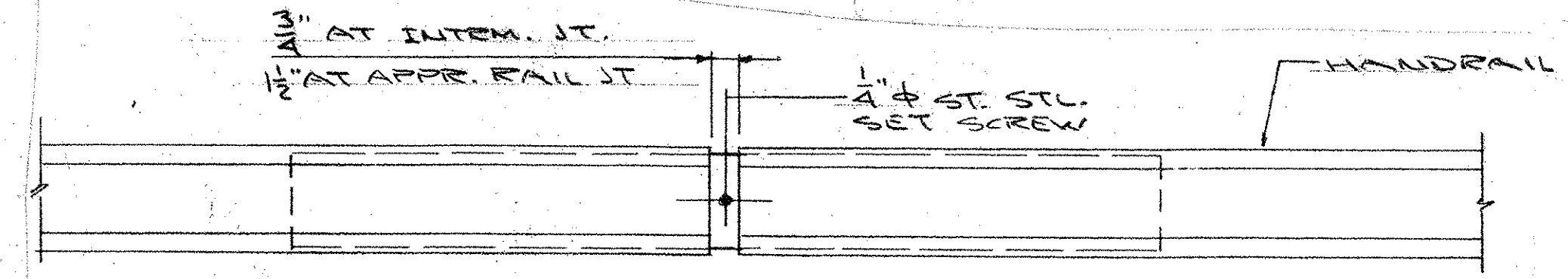
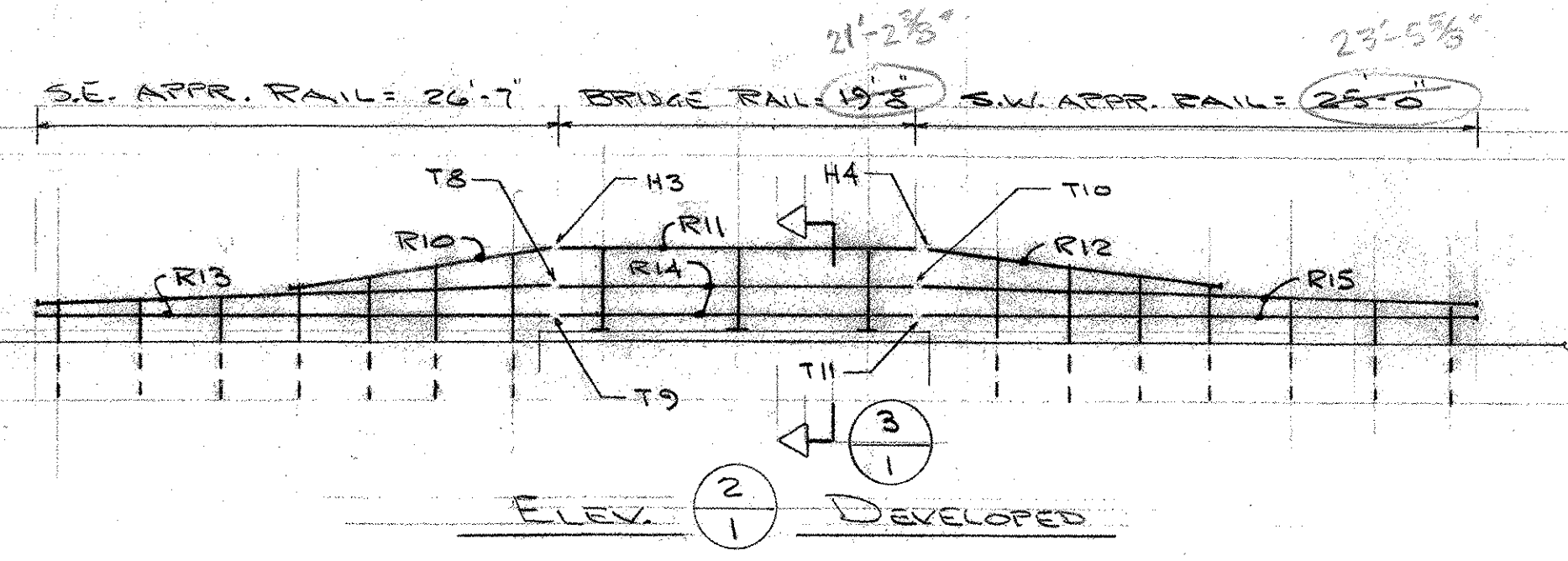
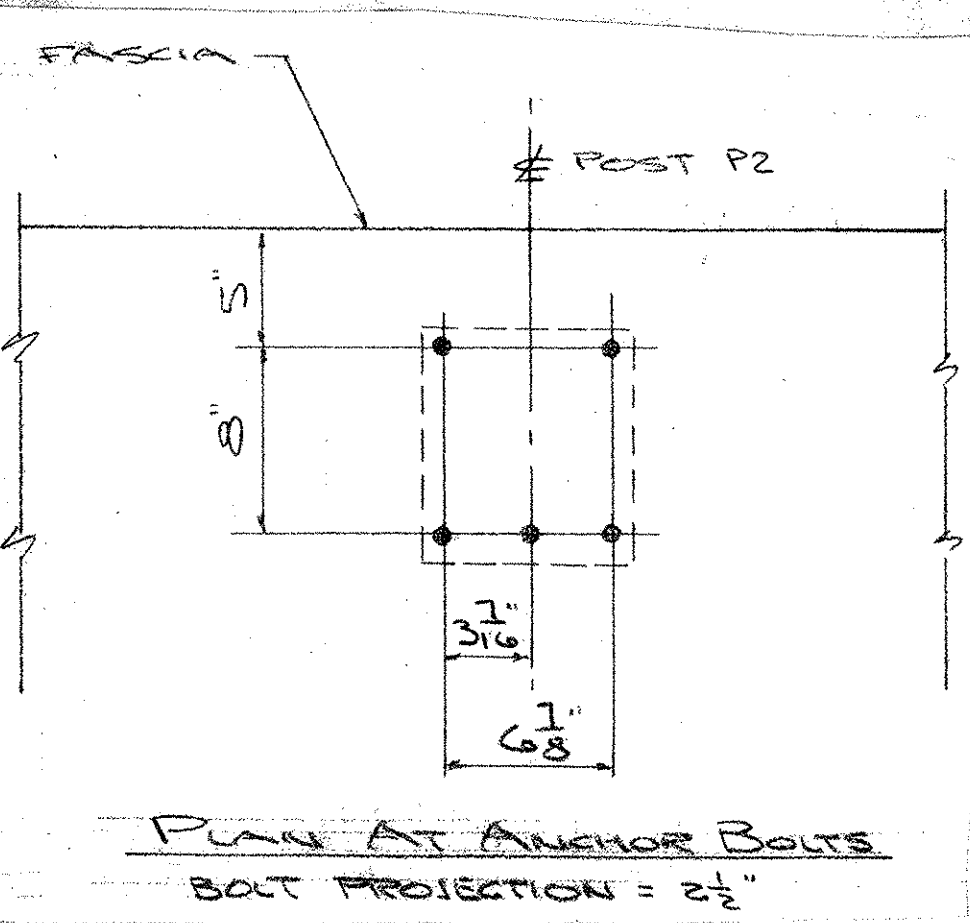
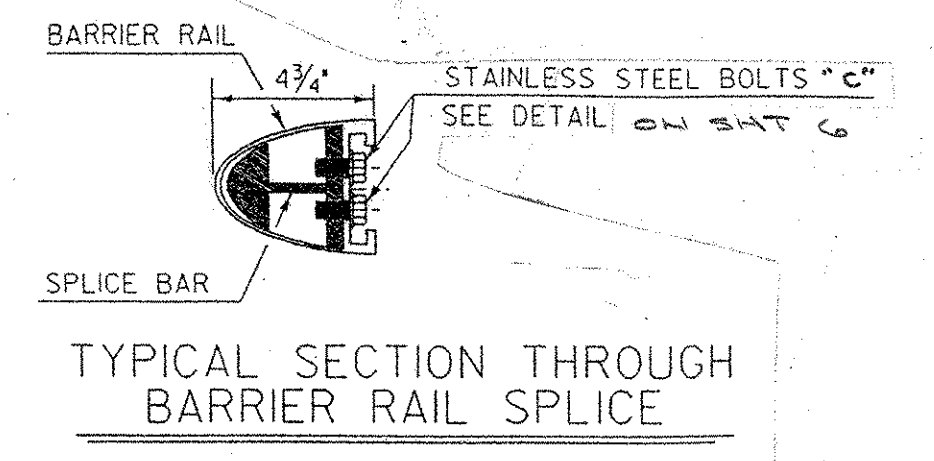


- 1 #4 CLAMP BAR
- 2 #1 CLAMP BAR
- 3 1/2"-13 x 3/4" HEX HD CAP SCREW (A193, GR. B8)
- 4 1/2"-13 x 1" HEX HD CAP SCREW (A193, GR. B8)
- 5 1/2" AL. RIVET (6061-T6)
- 6 AL. WASHER 1 1/16" OD x 1 1/16" ID x 3/32" THK.
- 7 1/2"-13 x 1 1/2" HEX HD CAP SCREW (304 ST. STL.) 75,000 TENSILE
- 8 1/2"-13 HEX NUT (304 ST. STL.) 75,000 TENSILE



FILE SET

RECEIVED  
AUG 25 2004

AUCIELLO IRON WORKS INC  
560 MAIN ST. HUDSON, MA (978) 568-8382

VT. AGENCY OF TRANSPORTATION  
ROCKINGHAM #TH2-9103

T.H.2 OVER BEAVER BROOK

ALUM. BRIDGE & APPROACH RAILING

SURFACE PREP: NONE FINISH: MILL FINISH

FOR: F.R. LAFAYETTE, INC.

DR: WM 8-10-04 DWG NO.  
CHK: B 8-14-04 BR-2836

ISSUE	DATE	DESCRIPTION	BY
1	8-19-04	FOR APPROVAL	