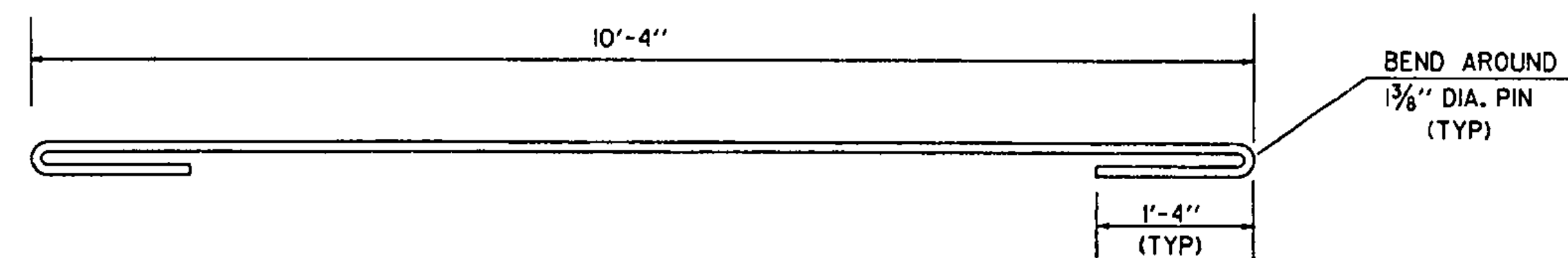
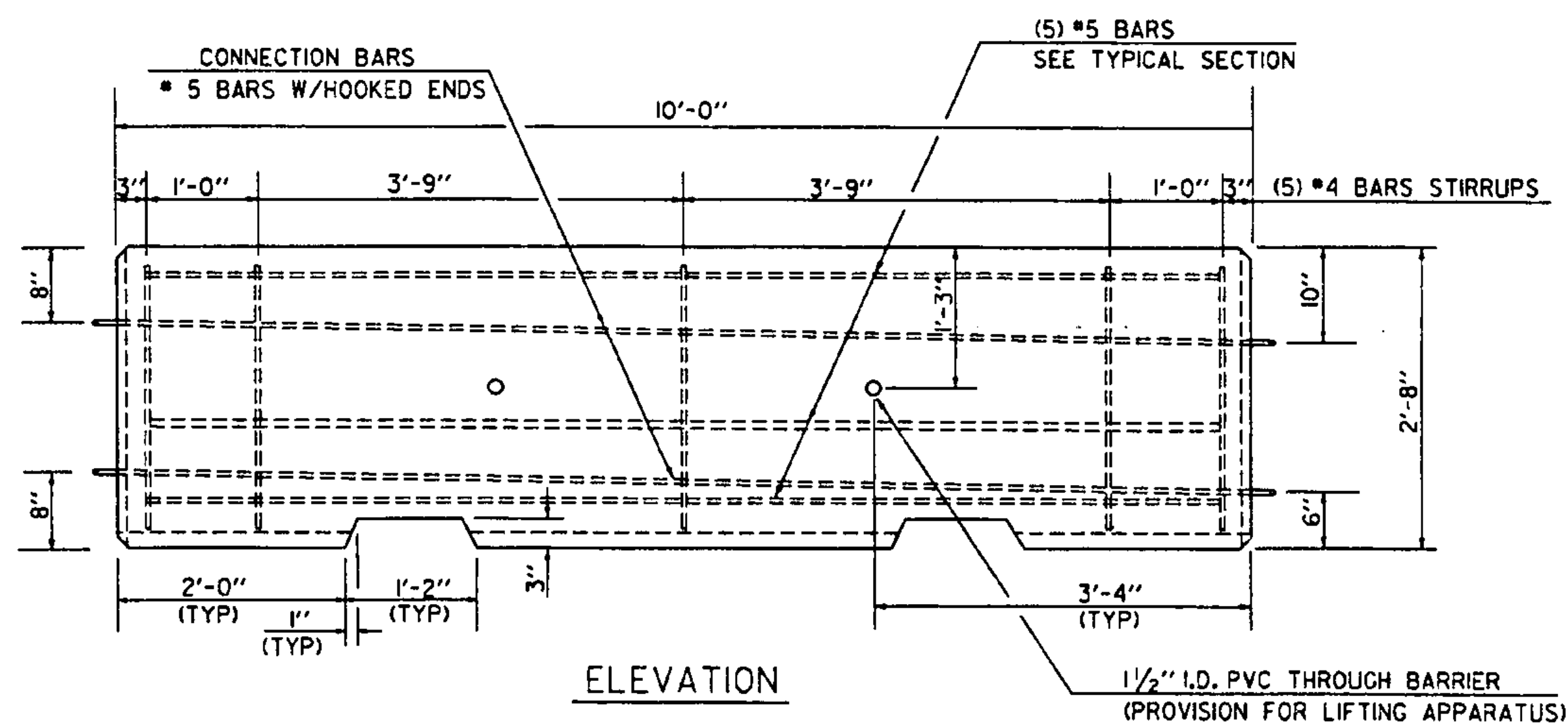


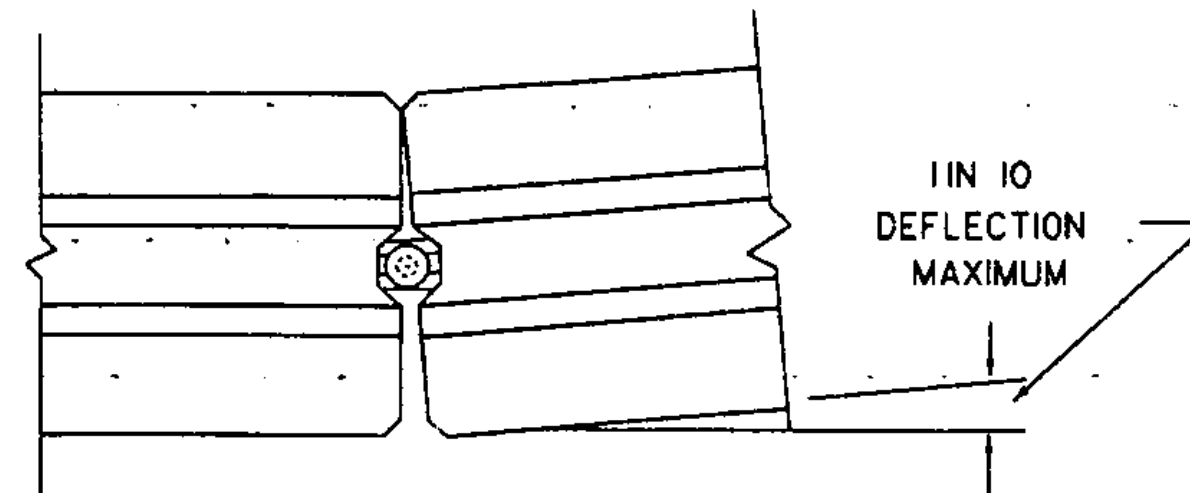
PLAN



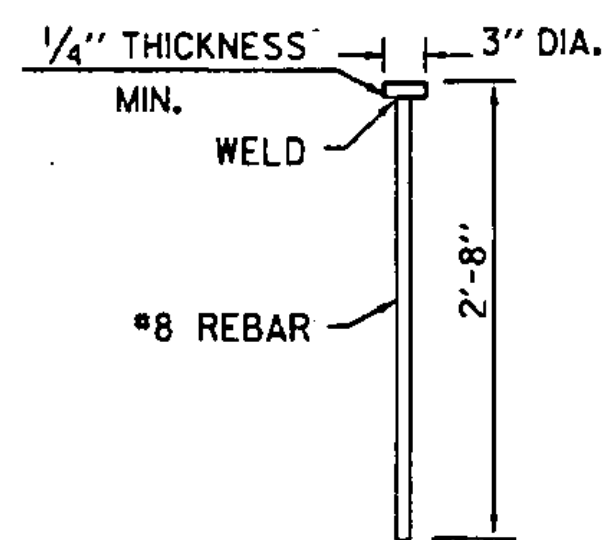
CONNECTION BAR DETAIL  
#5 REBAR



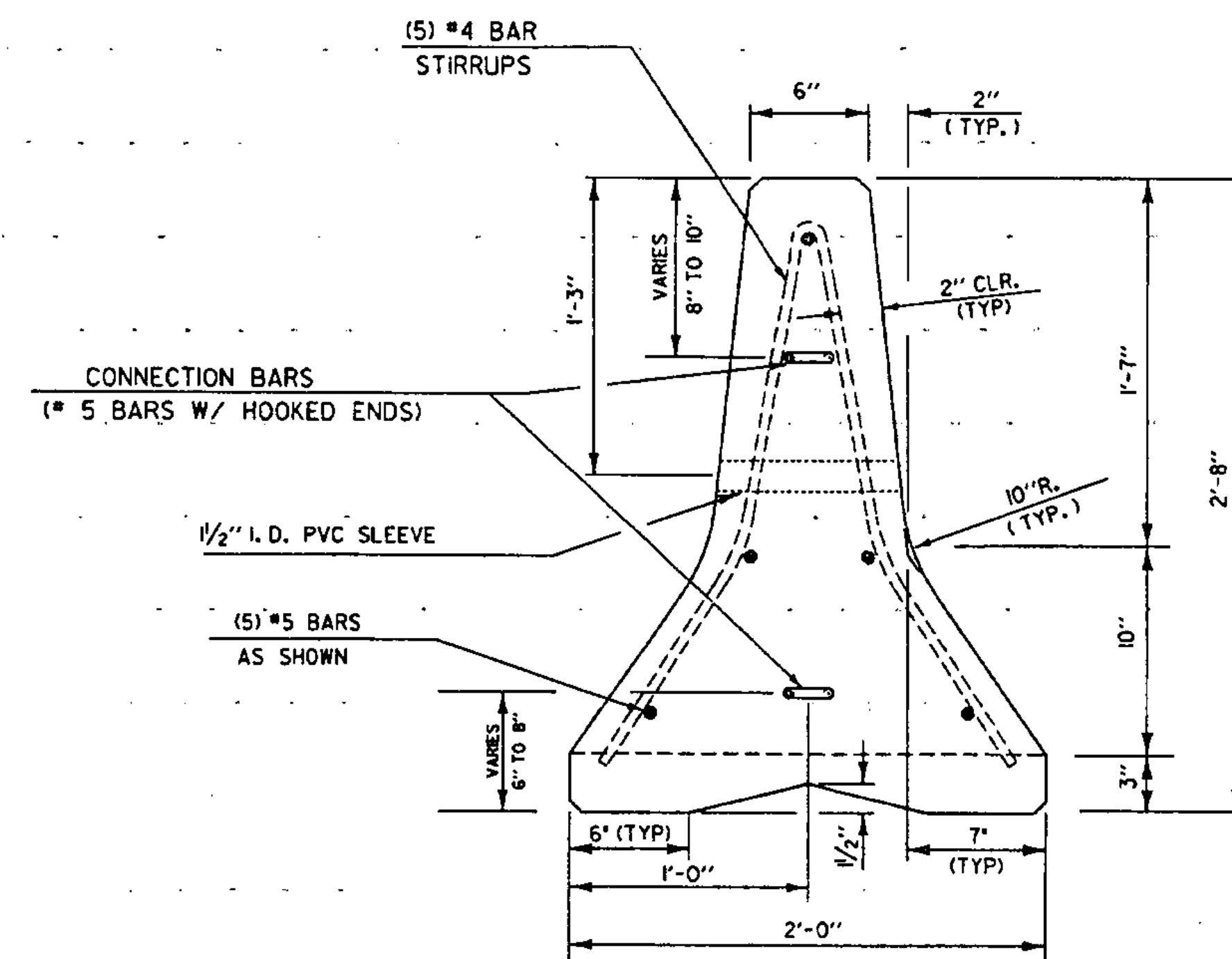
ELEVATION



PLAN CONNECTION DETAIL



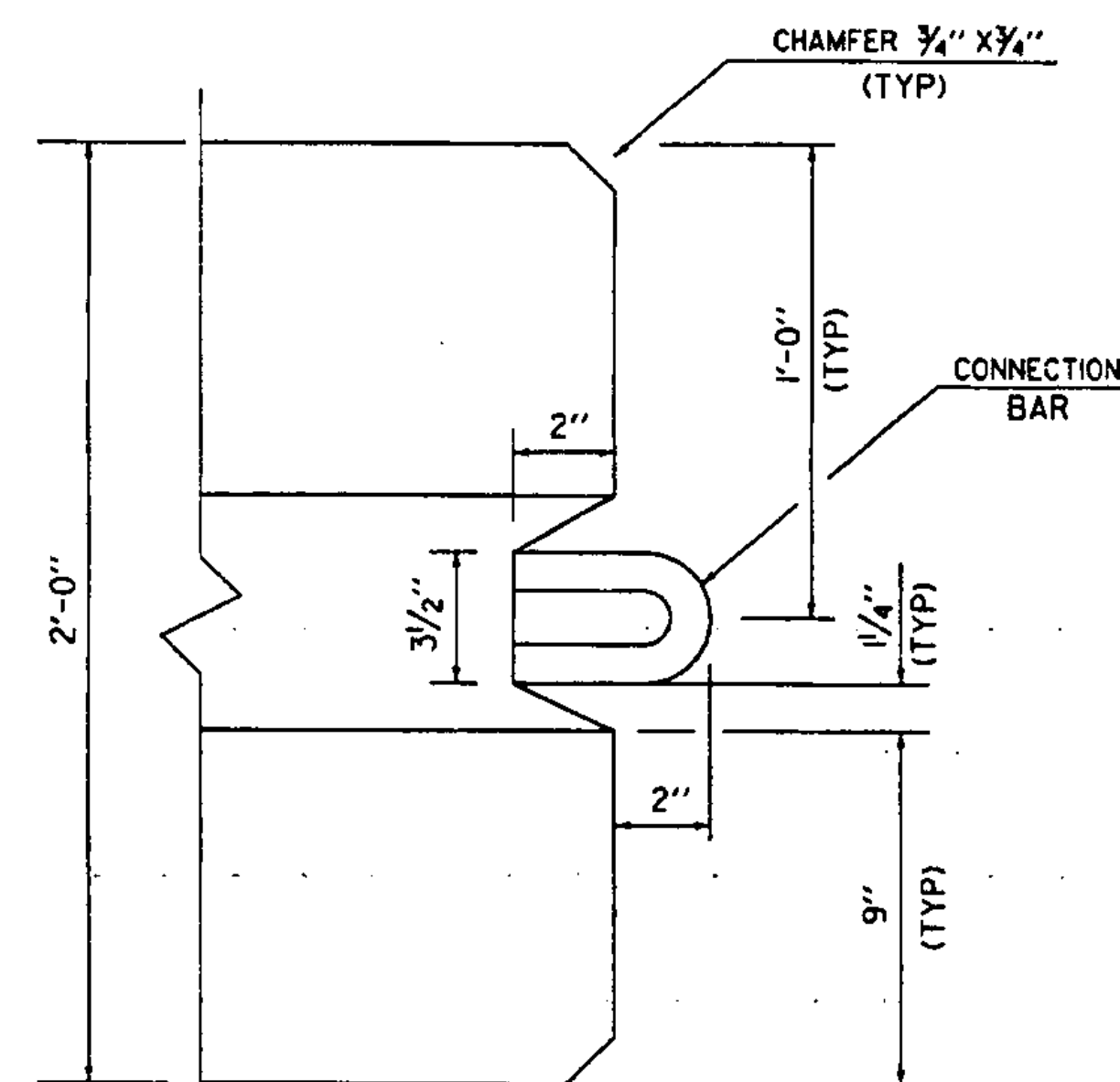
CONNECTION PIN



TYPICAL SECTION

NOTES

1. ALL CONCRETE WILL BE CLASS A.
2. ALL REINFORCING STEEL SHALL CONFORM TO AASHTO M31, GRADE 60.
3. REFLECTORS SHALL BE INSTALLED ON THE SIDE OF THE TEMPORARY TRAFFIC BARRIER WHEN PLACED ON THE DRIVERS LEFT SIDE, THE REFLECTORS SHALL BE YELLOW, THE REFLECTORS SHALL BE WHITE WHEN PLACED ON THE DRIVERS RIGHT SIDE. THE REFLECTORS SHALL BE INSTALLED AT A HEIGHT OF 21 INCHES AT 20 FOOT INTERVALS AND SHALL BE AT LEAST 9 SQUARE INCHES. THE REFLECTORS SHALL MEET THE REQUIREMENTS FOR SECTION 751.02 OR 751.03. THE REFLECTORS SHALL BE INSTALLED ON BOTH SIDES WHEN PLACED IN THE MEDIAN AND IN ALL CASES SHALL BE FIRMLY ATTACHED TO THE SIDE OF BARRIER. THE TYPE OF REFLECTOR AND THE INSTALLATION PROCEDURE SHALL BE SUBMITTED FOR REVIEW PRIOR TO INSTALLATION. COST OF FURNISHING AND INSTALLING REFLECTORS SHALL BE INCLUDED IN THE PRICE BID FOR TEMPORARY TRAFFIC BARRIERS.



PLAN AT ENDS OF BARRIER

REVISIONS AND CORRECTIONS  
JUNE 1, 1994 - REISSUED, WITHOUT CHANGE,  
UNDER NEW SIGNATURES.

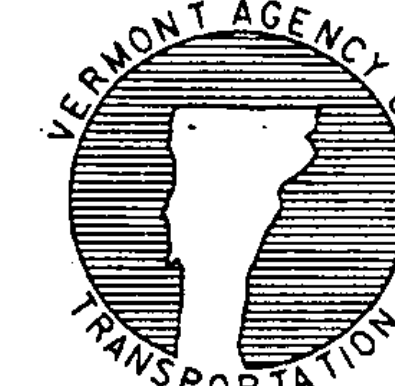
APPROVED

APPROVED FOR THIS PROJECT  
AND/OR DESIGN IMPLEMENTATION,  
FHWA FINAL APPROVAL PENDING.

*Samuel D. McArthur*  
DIRECTOR OF ENGINEERING

*John M. Mungin*  
DESIGN ENGINEER

PRECAST CONCRETE TEMPORARY TRAFFIC BARRIER



STANDARD  
G-18