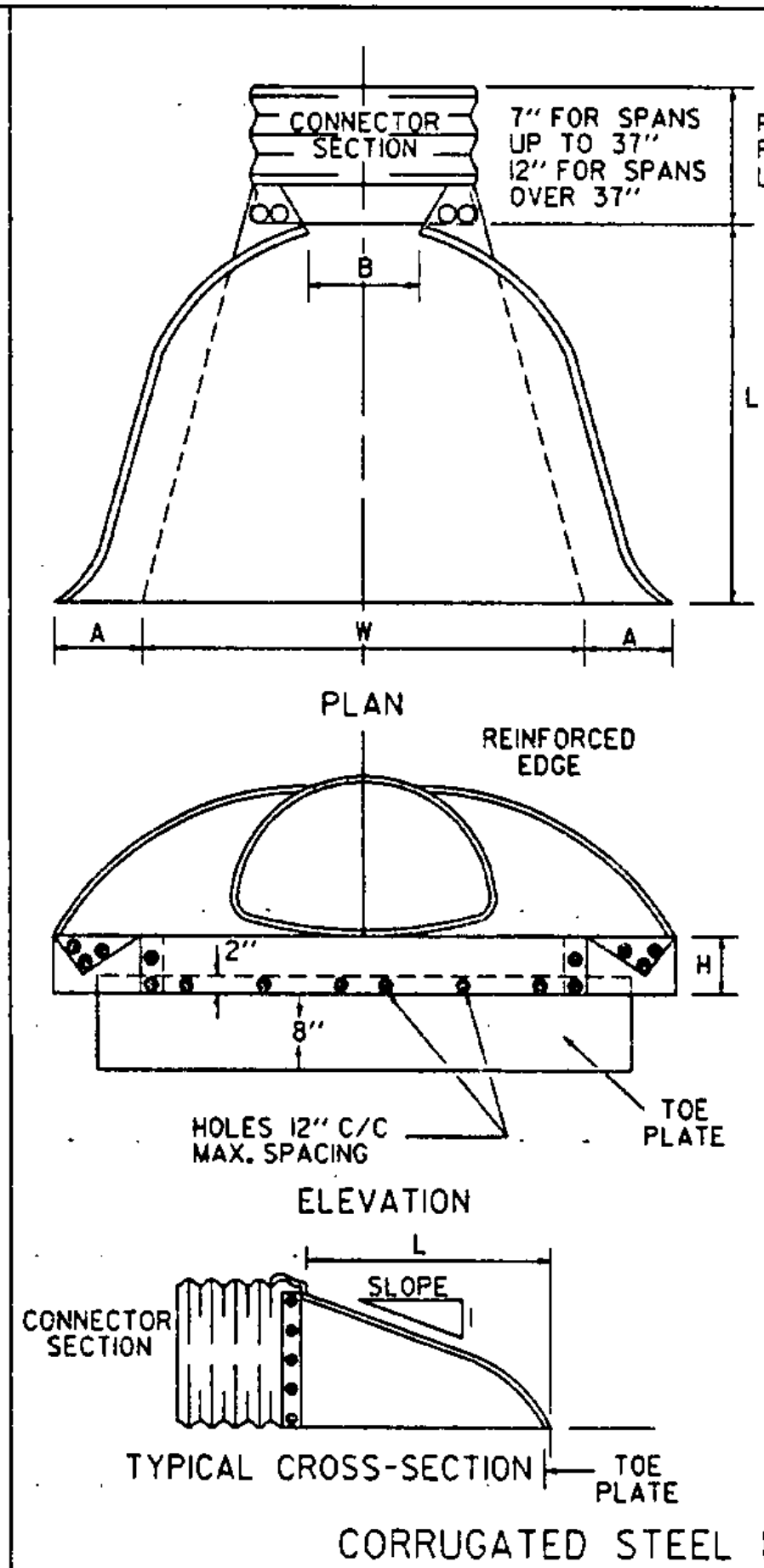
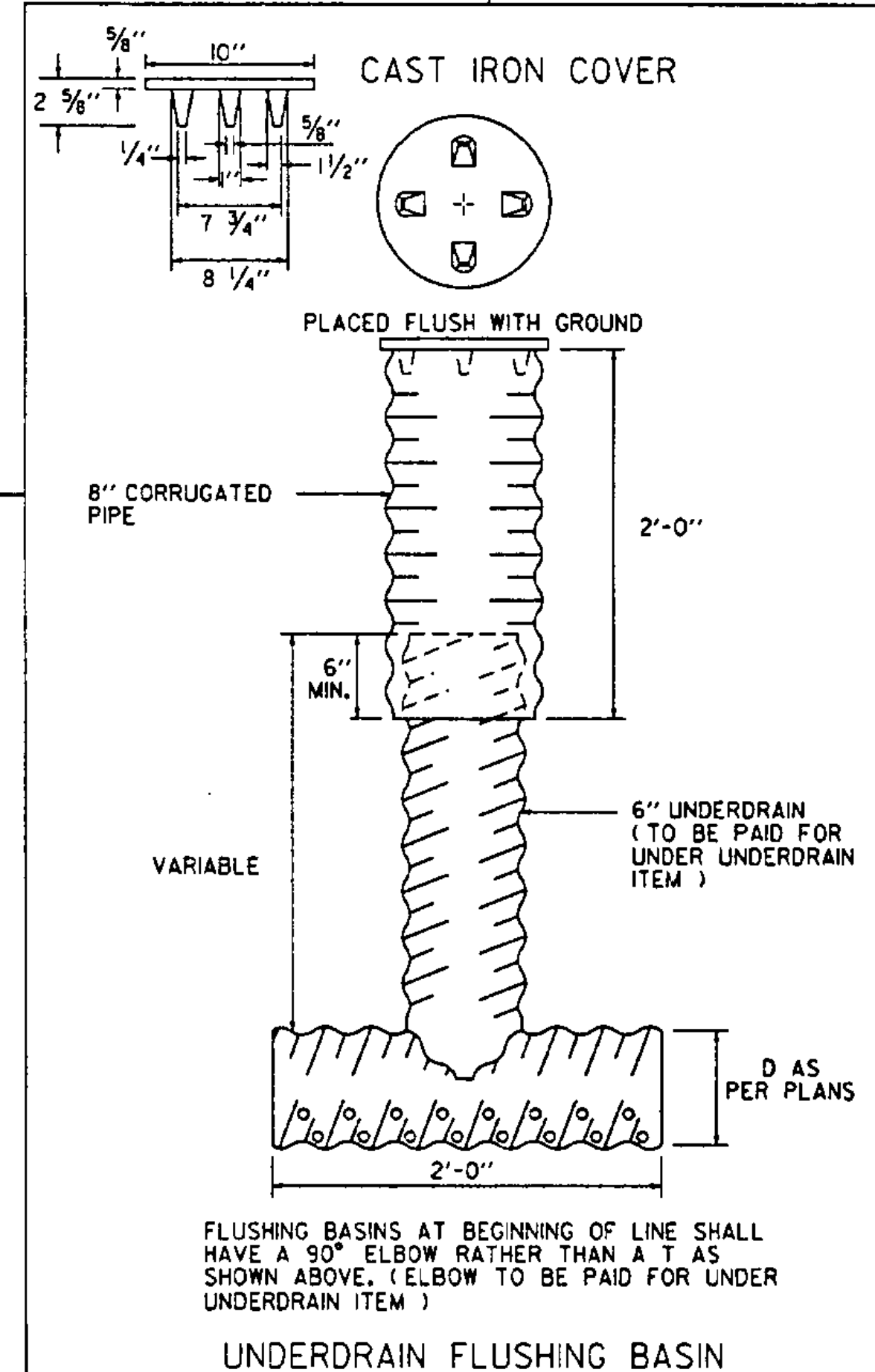
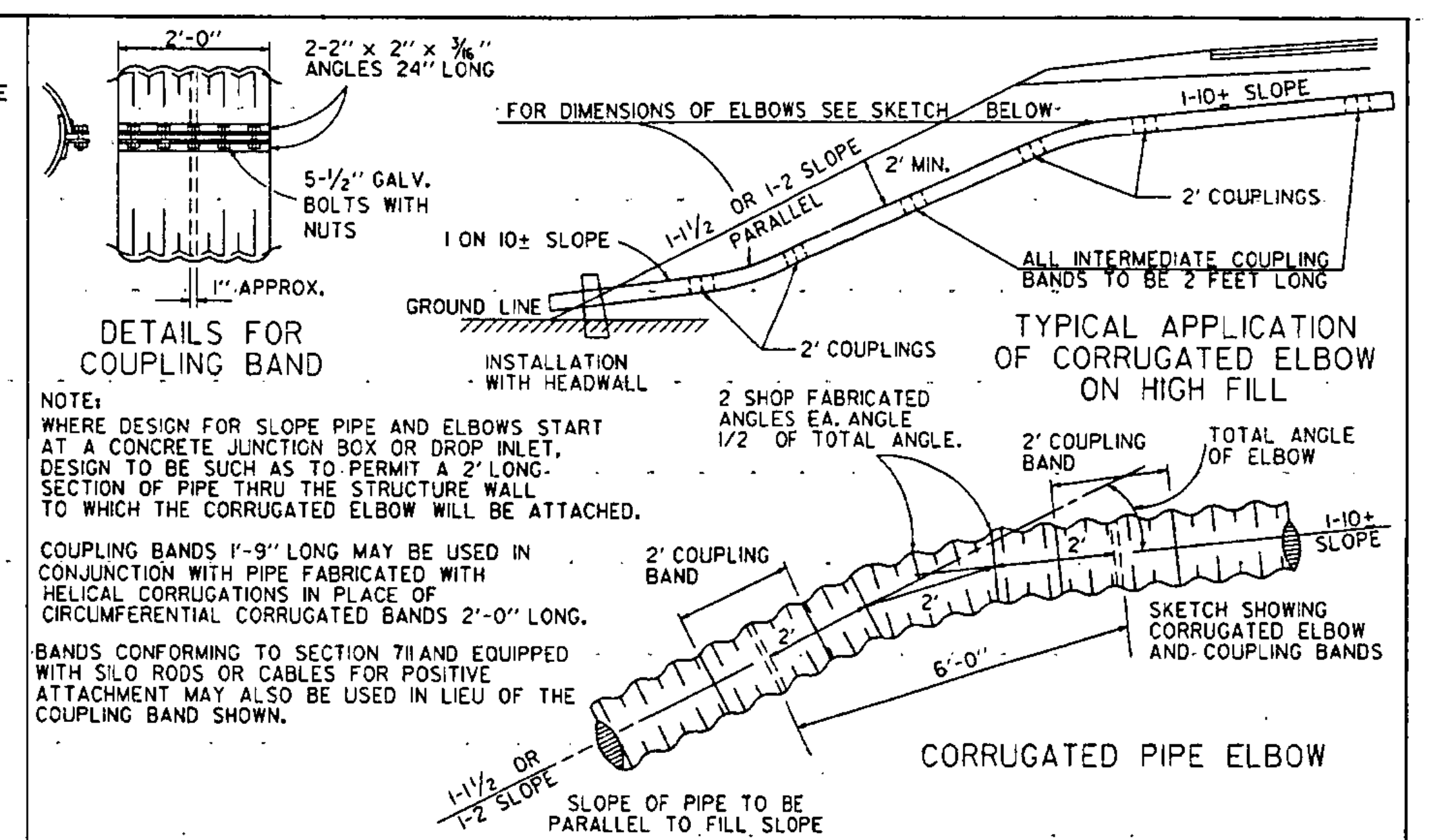
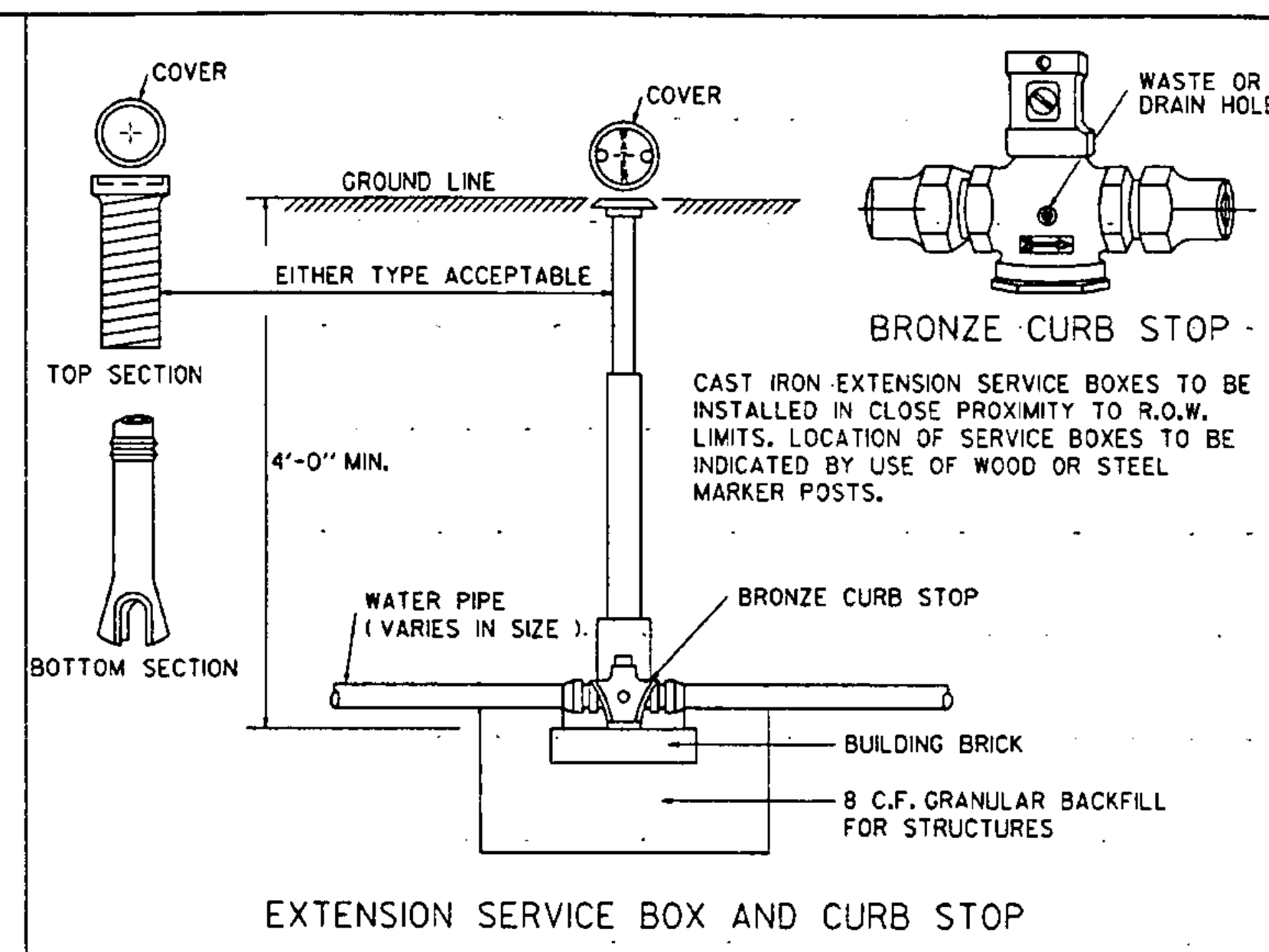
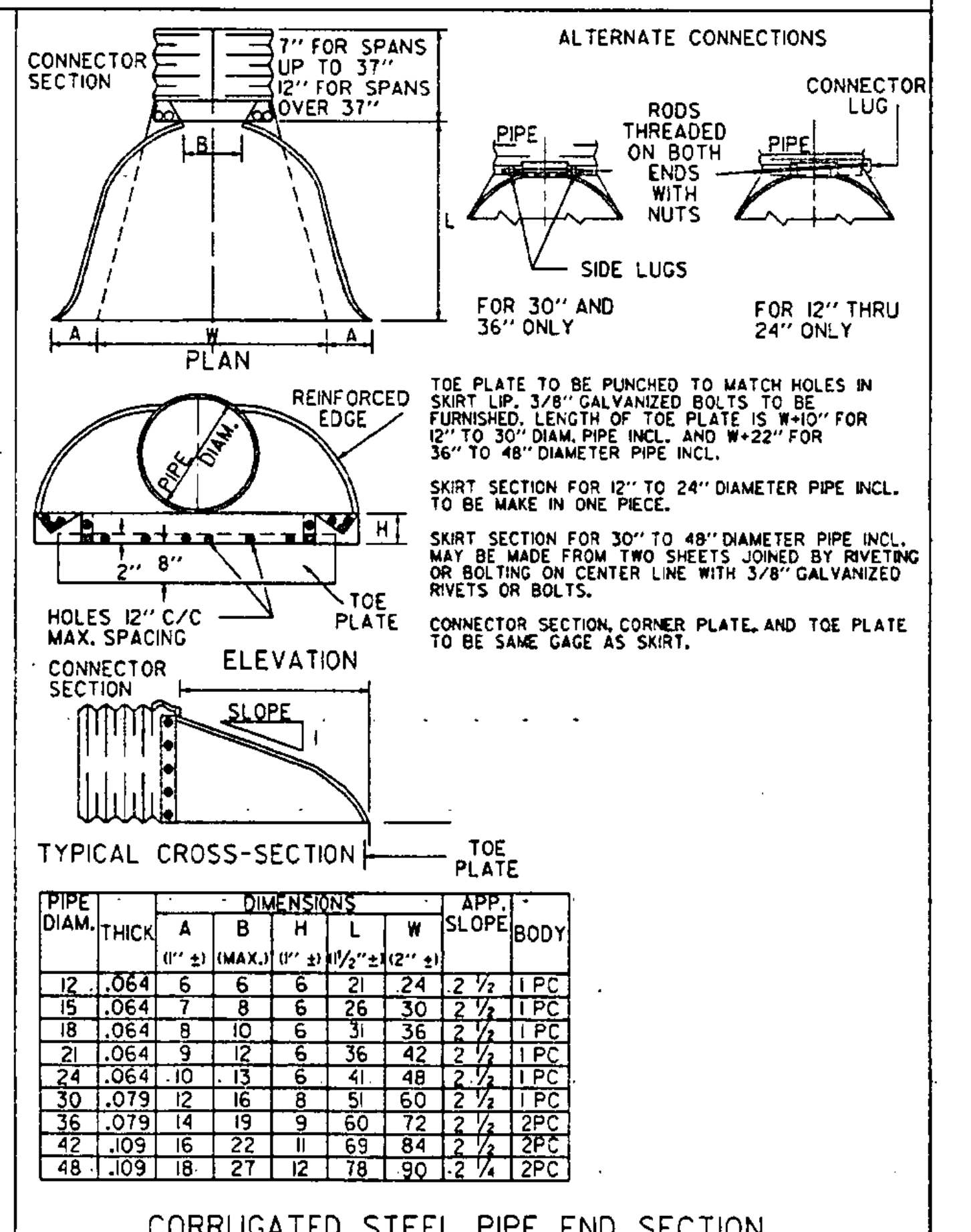


GRANULAR MATERIAL AT CULVERT LOCATIONS



PIPE ARCH DIMENSIONS	THICK	DIMENSIONS				APPROX. SLOPE	BODY	
		A	B	H	L			
18	.064	7	9	6	19	30	2 1/2	1PC
22	.064	7	10	6	23	36	2 1/2	1PC
29	.064	9	14	6	32	48	2 1/2	1PC
36	.079	10	16	6	39	60	2 1/2	1PC
43	.079	12	18	8	46	75	2 1/2	1PC
50	.109	13	21	9	53	85	2 1/2	2PC
58	.109	18	26	12	63	90	2 1/2	2PC
65	.109	18	30	12	70	102	2 1/2	2PC
72	.109	18	33	12	77	114	2 1/2	3PC



REVISIONS AND CORRECTIONS

DEC. 6, 1971 - ORIGINAL APPROVAL DATE

JULY 17, 1972 - HELICAL CORRUGATED COUPLING NOTE ADDED

JULY 24, 1975 - GRANULAR MATERIAL AT CULVERT LOCATIONS CORRECTED

OCT. 30, 1985 - REVISED TO CONFORM TO 1986 SPECIFICATIONS

JUNE 1, 1994 - REISSUED, WITHOUT CHANGE, UNDER NEW SIGNATURES.

APPROVED

APPROVED FOR THIS PROJECT AND/OR DESIGN IMPLEMENTATION, FINAL APPROVAL PENDING.

Stephen J. McCallister, P.E.
DIRECTOR OF ENGINEERING

John M. Murphy, P.E.
DESIGN ENGINEER

TYPICAL WATERFALL FOR CULVERTS UP TO AND INCLUDING 48" DIAMETER

EXTENSION SERVICE BOX AND CURB STOP

CORRUGATED PIPE ELBOW

GRANULAR BORROW AT CULVERT LOCATIONS

UNDERDRAIN FLUSHING BASIN

CORRUGATED STEEL PIPE ARCH END SECTION

CORRUGATED STEEL PIPE END SECTION

