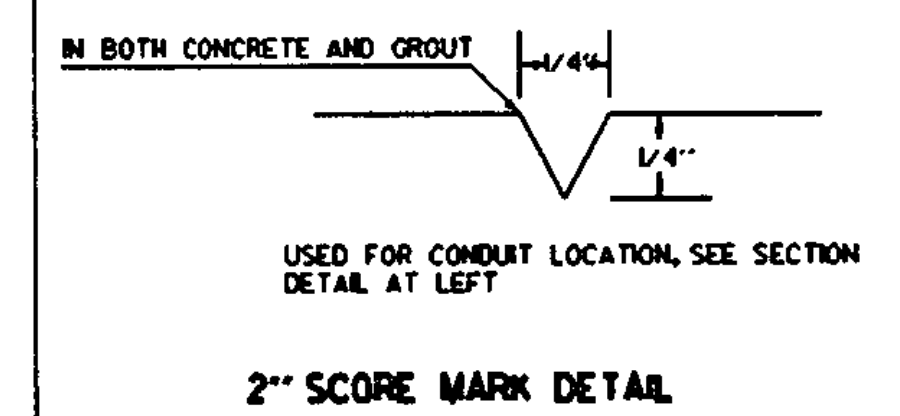
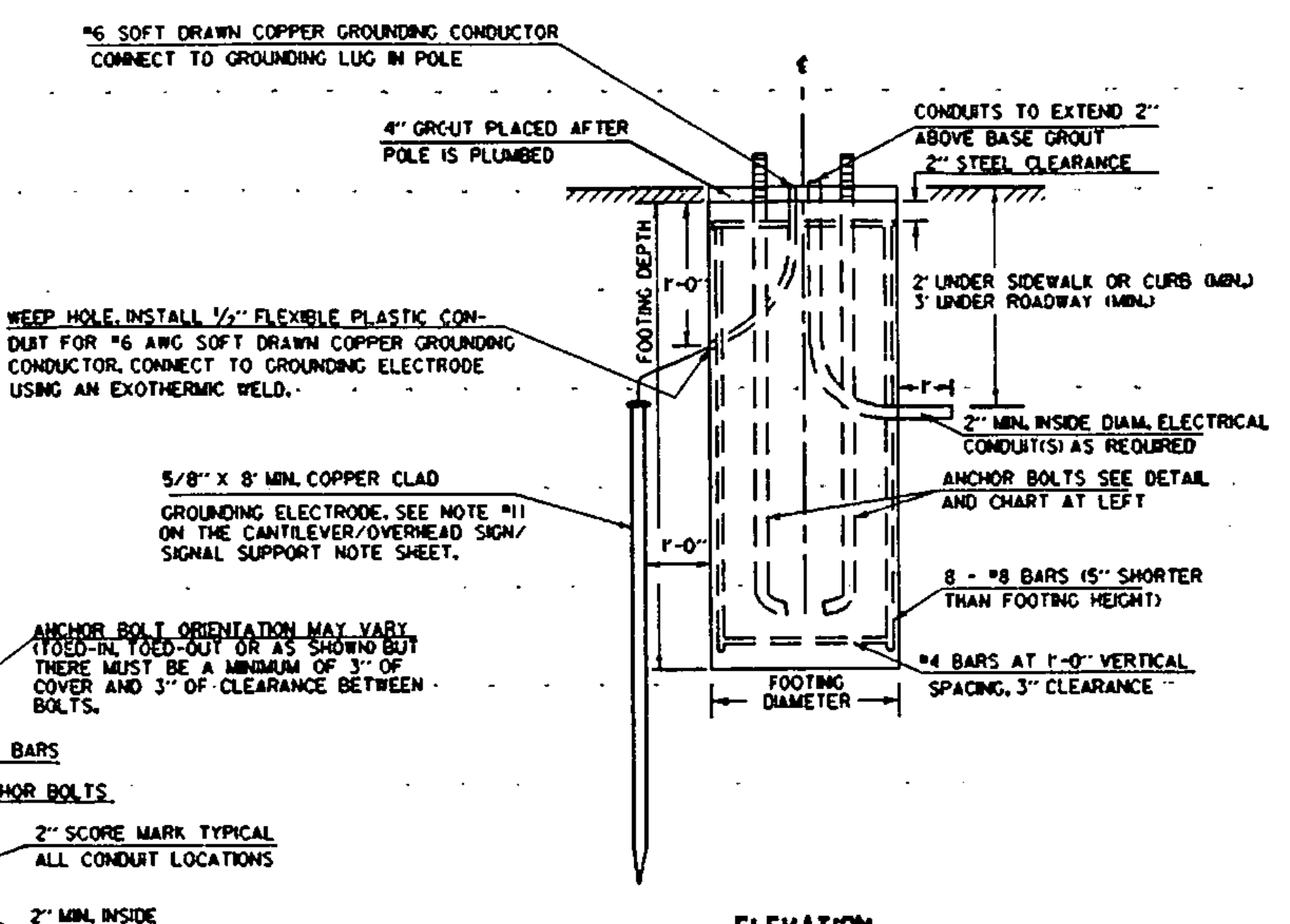
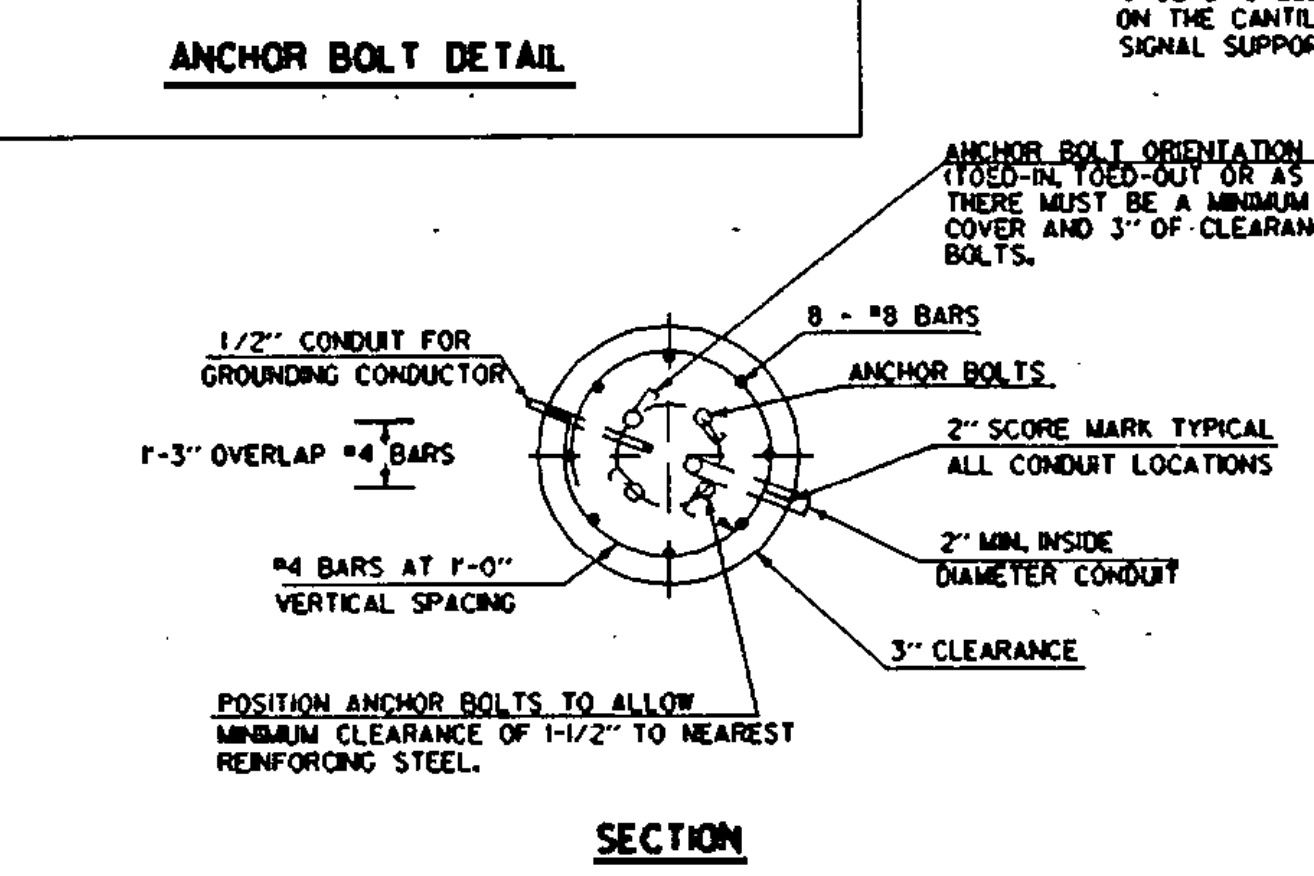
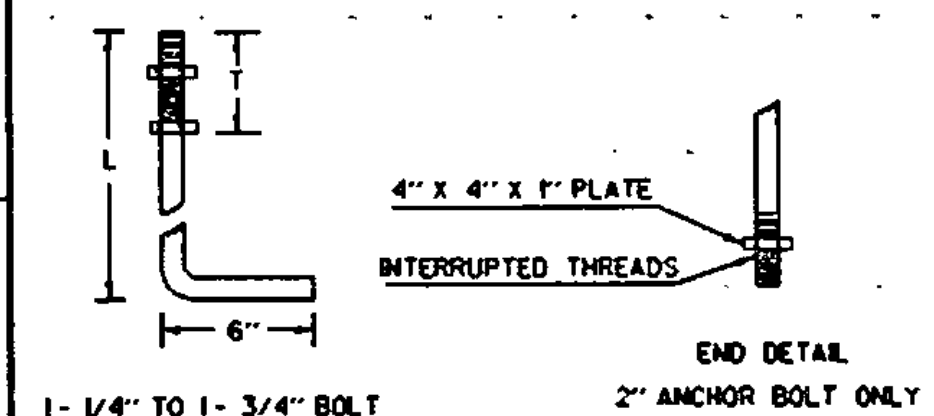
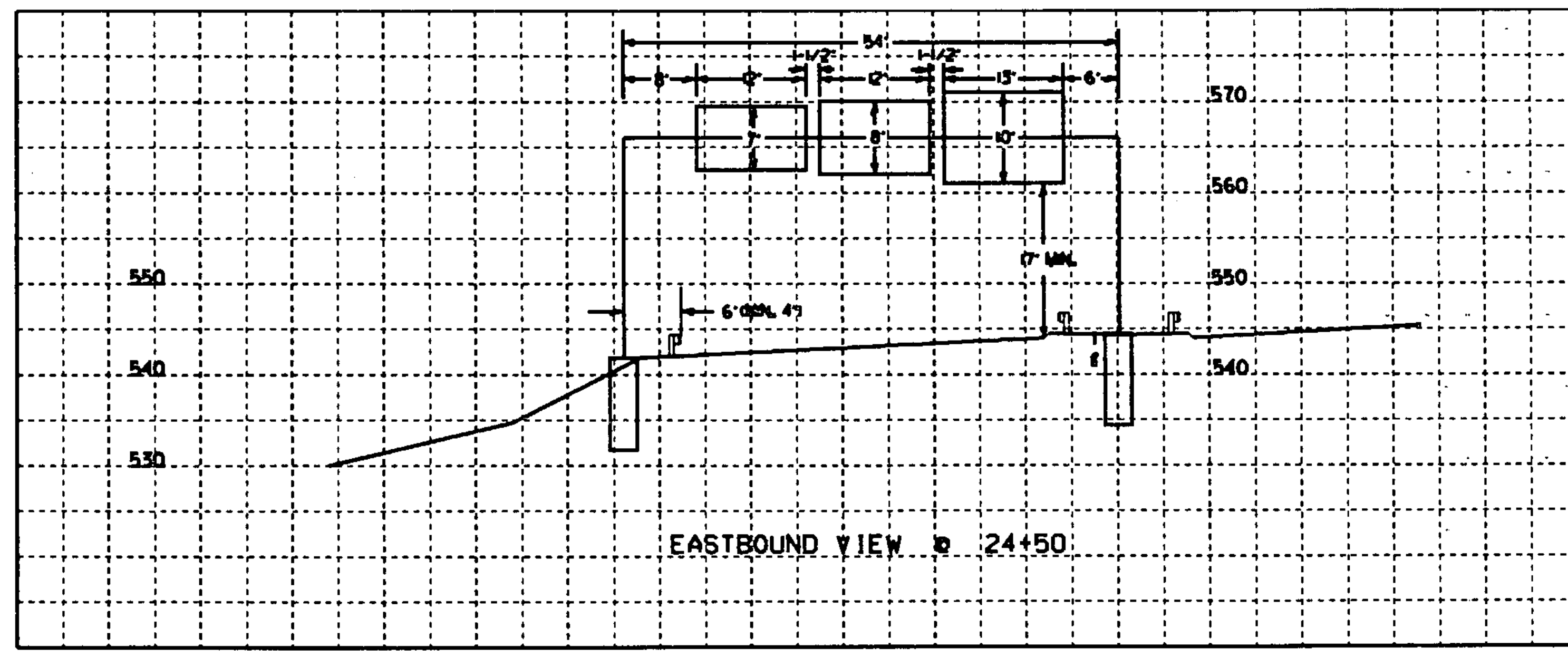
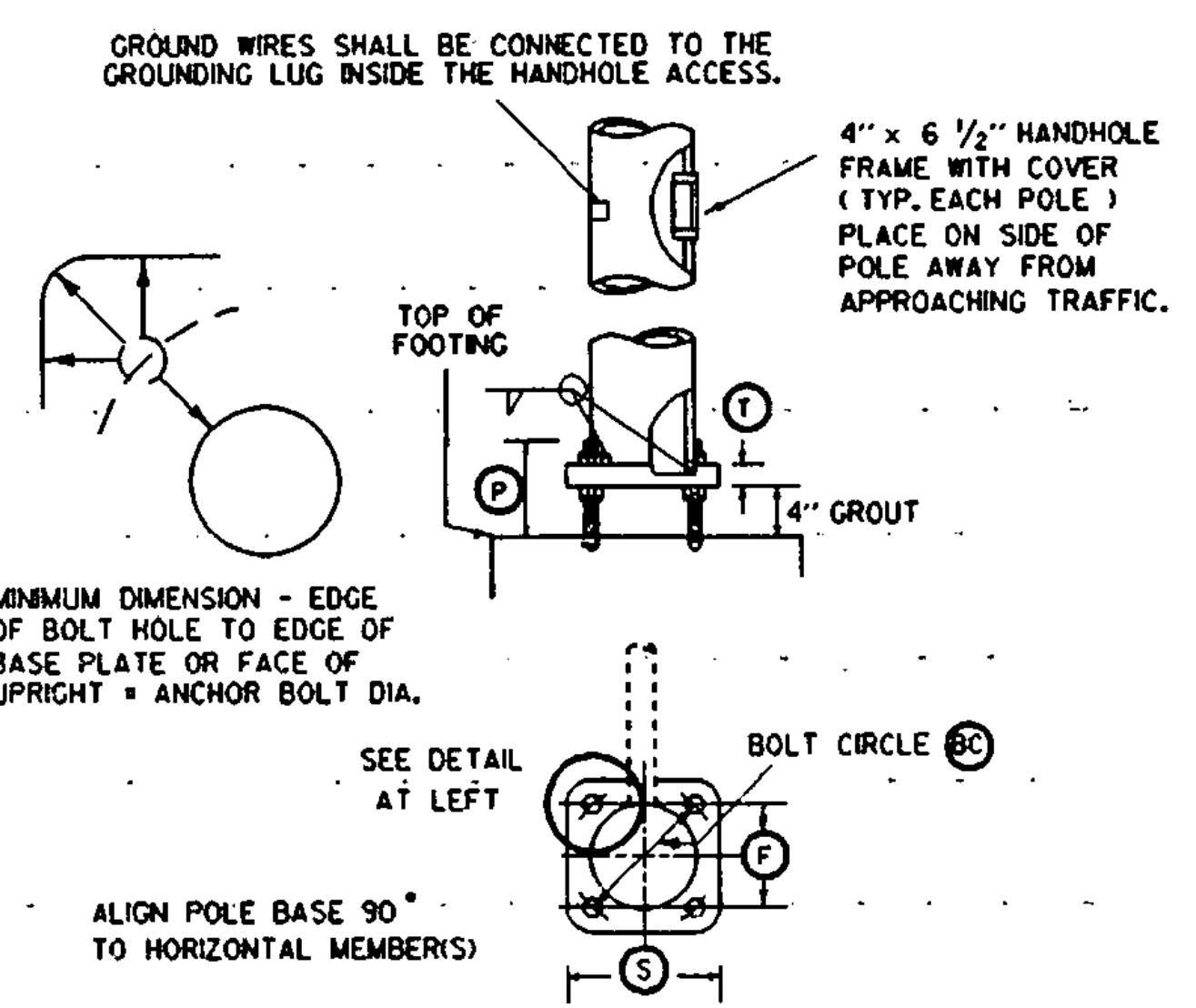


ANCHOR BOLT DETAIL	SIZE	L (IN)	T (IN)
1- 1/4" x 48"	42	8	
1- 1/2" x 60"	54	9	
1- 3/4" x 90"	84	9	
2" x 96"	96	9	



OVERHEAD TRAFFIC SIGN BRIDGE FOOTING DETAIL
(SPREAD FOOTINGS OR PILES ARE OPTIONAL)

- NOTES:
1. SEE CANTILEVER / OVERHEAD SIGN / SIGNAL SUPPORTS NOTE SHEET FOR ADDITIONAL INFORMATION.
 2. MANUFACTURER TO DETERMINE TYPE OF STRUCTURE REQUIRED.
 3. MONOTUBES SHALL NOT BE USED FOR SIGNS OVER 10' IN HEIGHT.
 4. STREET LIGHTING IS OPTIONAL. SEE PLAN SHEETS OR SECTION.
 5. MINIMUM CLEARANCE FROM SIGNS TO ROADWAY IS 17'.



OVERHEAD SIGN BRIDGE CROSS SECTION SCALE 1" = 10'

(SEE SHEETS) 29 FOR LOCATION PLAN

OVERHEAD TRAFFIC SIGN BRIDGE / FOOTING DETAIL SHEET

NOTE: DETAILS NTS

/traf/forms/cantlvr.dgn
ovhds.l
PLOTTED: 7-MAR-1996

/traf/85b018/1b0181.dgn/1b0181a.l
LAST REVISED 8/15/95

PREPARED BY: IKA DATE: 5/94
CHECKED BY: DATE: _____
DESIGN SUPERVISOR: DATE: _____
PROJ.: MONTPELIER
F EGC F 028-21(8)
TRAFFIC SHEET NO. _____ OF _____
SHEET 57 OF _____ SHEETS