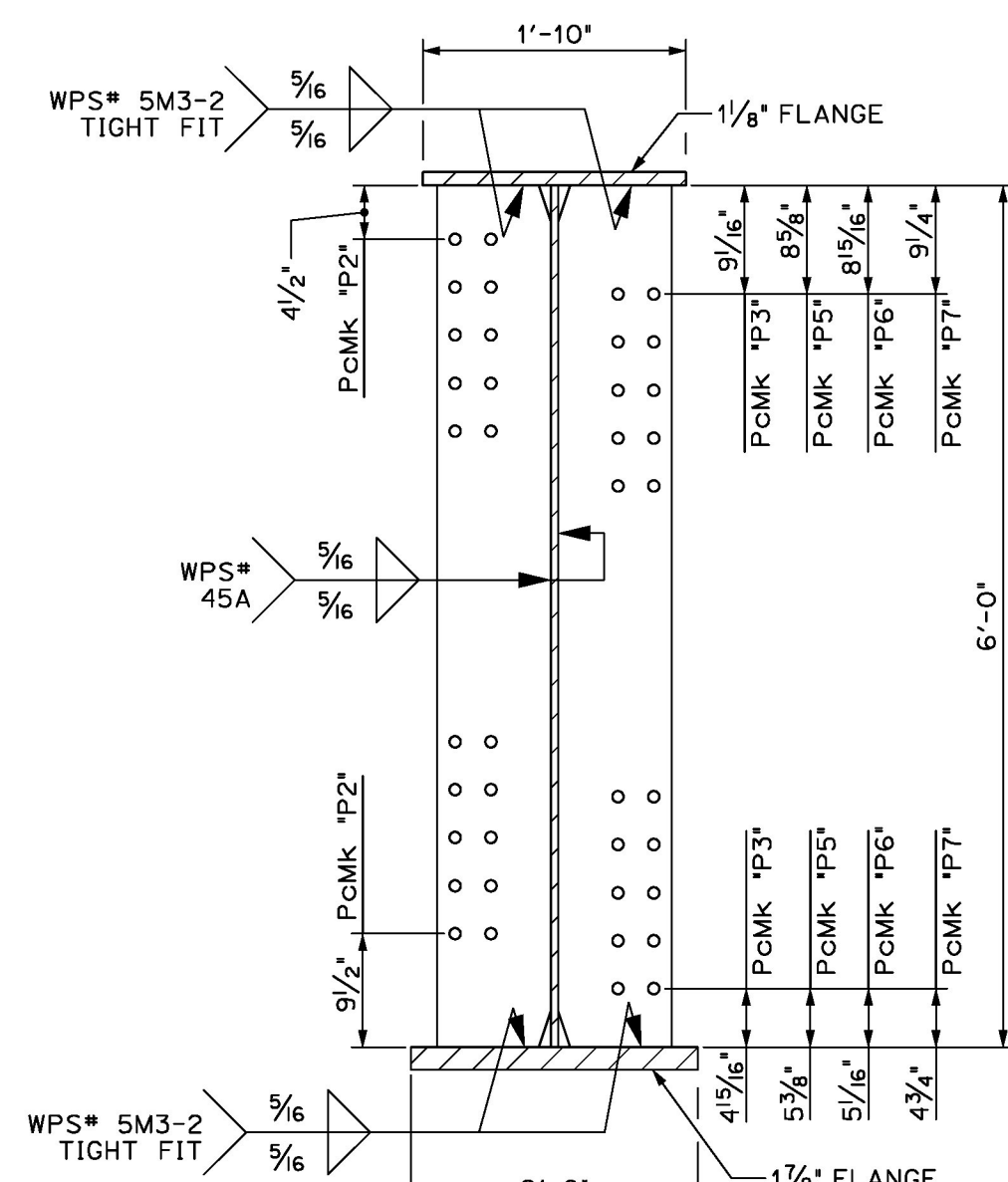
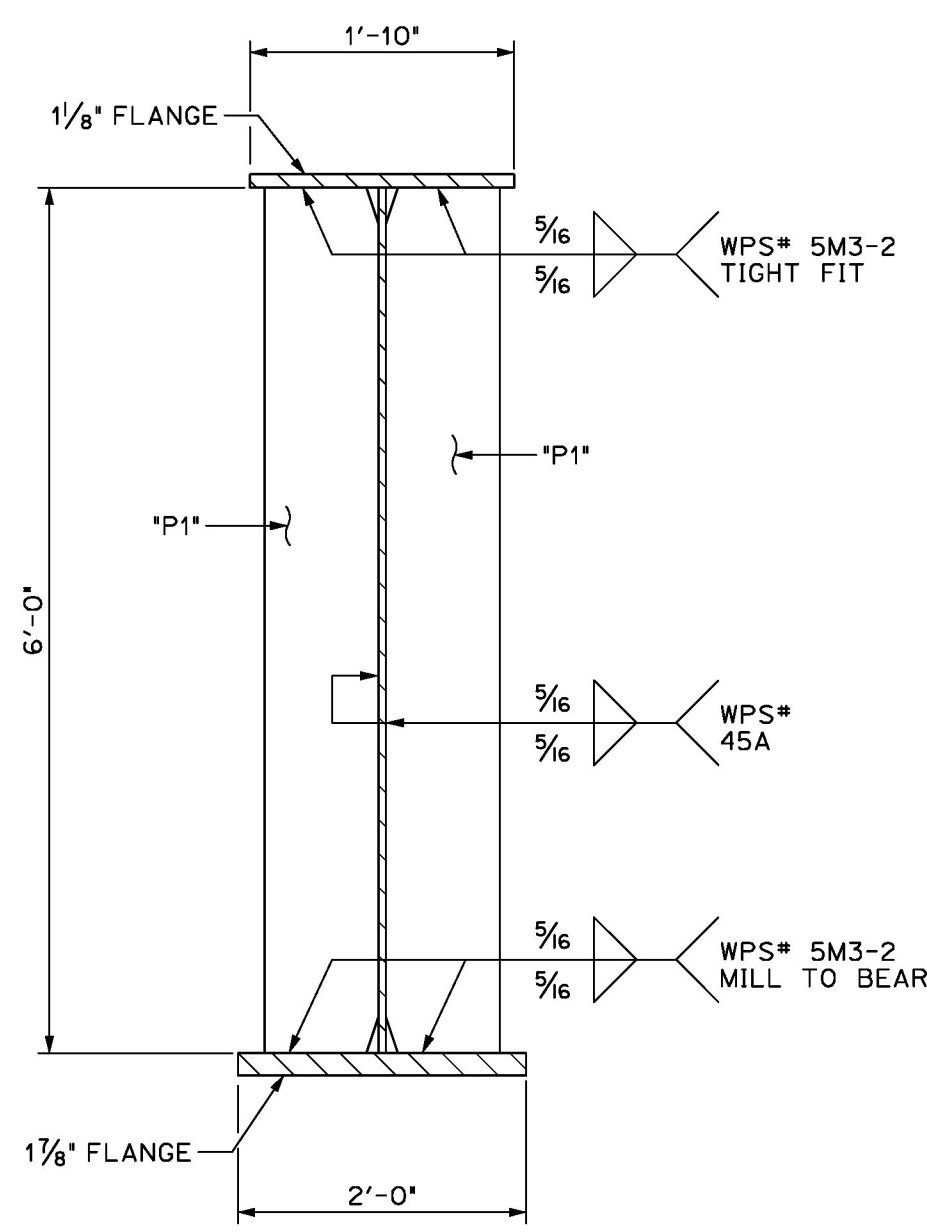
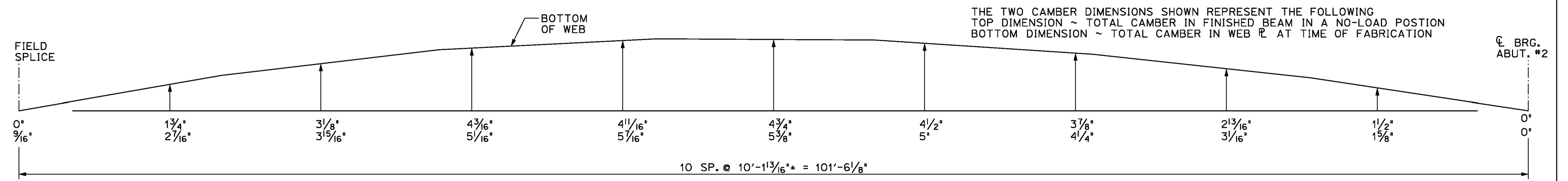


1 DIMENSIONAL PLANS & ELEVATIONS ~ GIRDER "G4-B"
 10 HORIZONTAL SCALE: 1/4" = 1'-0"
 VERTICAL SCALE EXAGGERATED 2x1



A DIMENSIONAL SECTION
 10 SCALE: 3/4" = 1'-0"

B DIMENSIONAL SECTION
 10 SCALE: 3/4" = 1'-0"

GIRDER "G4-B" CAMBER
 N.T.S.

BILL OF MATERIALS							
SHIP	SHIP MARK	NO. PCS.	PIECE MARK	DESCRIPTION	LENGTH	WT.	MATERIAL
1	G4-B			BRIDGE GIRDER ASSEMBLY	102 0/16"	41700# EACH	
		1	WP11	PL 5/8" x 72"	47'-0 1/16"	7500# EACH	CVN
		1	WP12	PL 5/8" x 72"	55'-0"	8500# EACH	CVN
		1	TF11	PL 1 1/8" x 22"	55'-1 1/4"	4700# EACH	CVN
		1	TF12	PL 1 1/8" x 22"	46'-10 7/8"	4000# EACH	CVN
		1	BF11	PL 1 1/8" x 24"	55'-0"	8500# EACH	CVN
		1	BF12	PL 1 1/8" x 24"	46'-9 3/8"	7500# EACH	CVN
		2	P1	SEE SHEET M2			
		6	P2	SEE SHEET M2			
		3	P3	SEE SHEET M2			
		1	P5	SEE SHEET M2			
		1	P6	SEE SHEET M2			
		1	P7	SEE SHEET M2			

NO	DATE	DESCRIPTION	BY
REVISIONS			
1			
2			
3			
4			
5			
6			
7			
8			
9			
10			

		ADVANCED RESOURCES & CONST. ENTERPRISES, INCORPORATED P.O. BOX 120 KINGFIELD, ME. 04947 PHONE: (207) 265-2646 - FAX: (207) 265-4054	
DRAFTER	DLM	GIRDER G4-B	PROJECT NO.
DATE	OCT. 2015	STOWE, VT, Route 108 (Major Collector) Bridge No. 3	15-144
CHECKED	JUH	Project No. BRP 0235(15)	DWG. NO.
DATE	OCT. 2015	CCS CONSTRUCTORS, INC.	10