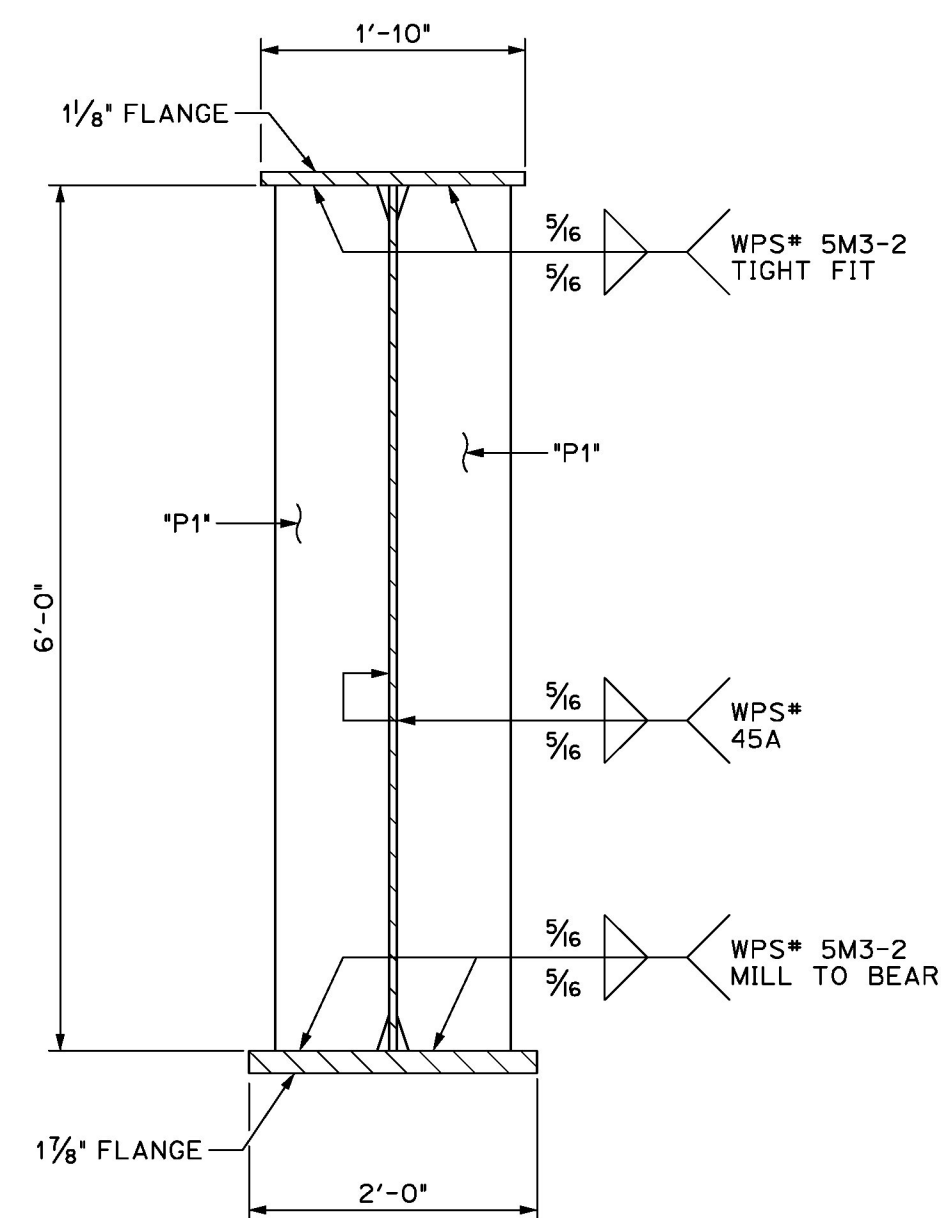
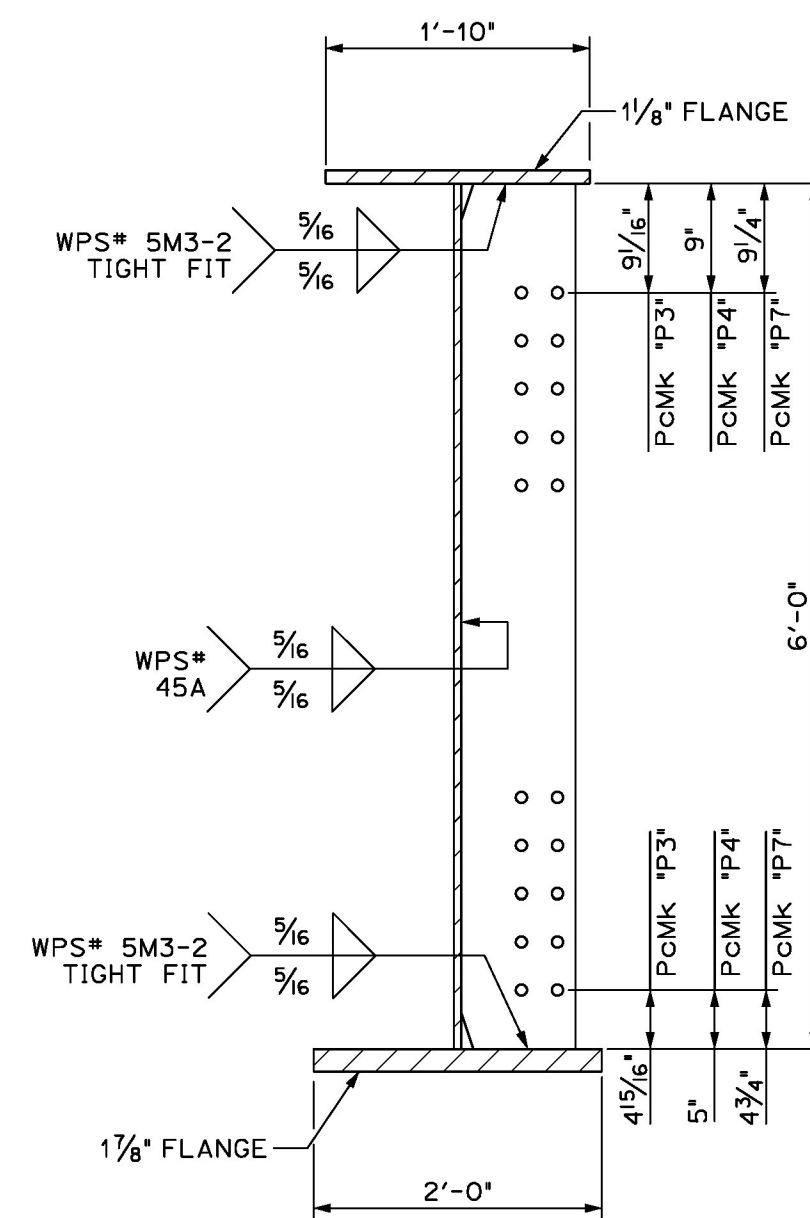


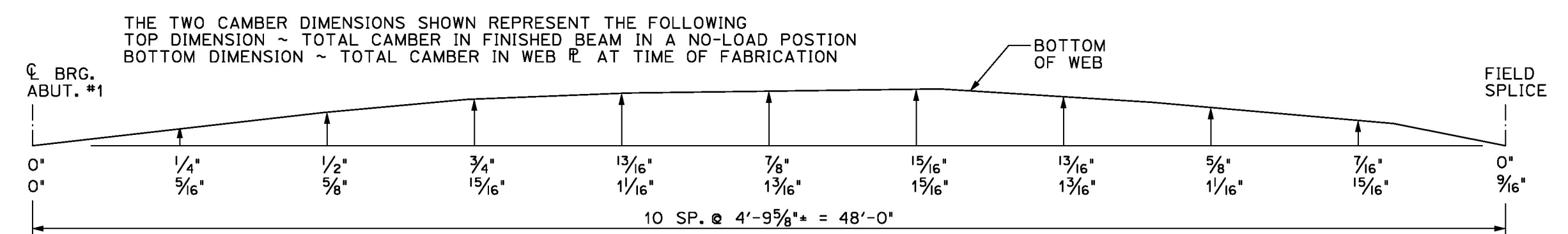
1 DIMENSIONAL PLANS & ELEVATIONS ~ GIRDER "G5-A"  
 6 HORIZONTAL SCALE: 1/4" = 1'-0"  
 VERTICAL SCALE EXAGGERATED 2:1



A DIMENSIONAL SECTION  
 6 SCALE: 3/4" = 1'-0"



B DIMENSIONAL SECTION  
 6 SCALE: 3/4" = 1'-0"



GIRDER "G5-A" CAMBER  
 N.T.S.

BILL OF MATERIALS							
SHIP	SHIP MARK	NO. PCS.	PIECE MARK	DESCRIPTION	LENGTH	WT.	MATERIAL
1	G5-A			BRIDGE GIRDER ASSEMBLY	48'-5 3/8"	19700# EACH	
		1	WP13	PL 5/8" x 72'	48'-5 3/8"	7450# EACH	CVN
		1	TF13	PL 1 1/8" x 22'	48'-5 3/8"	4100# EACH	CVN
		1	BF13	PL 1 1/8" x 24'	48'-4 3/8"	7420# EACH	CVN
		1	DP1	SEE SHEET M1			
		2	P1	SEE SHEET M2			
		1	P3	SEE SHEET M2			
		1	P4	SEE SHEET M2			
		1	P7	SEE SHEET M2			

REVISIONS			
NO	DATE	DESCRIPTION	BY

	<b>ADVANCED RESOURCES &amp; CONST. ENTERPRISES, INCORPORATED</b> P.O. BOX 120 KINGFIELD, ME. 04947 PHONE: (207) 265-2646 - FAX: (207) 265-4054	
	DRAFTER: DLM DATE: OCT. 2015 CHECKED: JHH DATE: OCT. 2015	GIRDER G5-A STOWE, VT, Route 108 (Major Collector) Bridge No. 3 Project No. BRP-0235(15) CCS CONSTRUCTORS, INC.