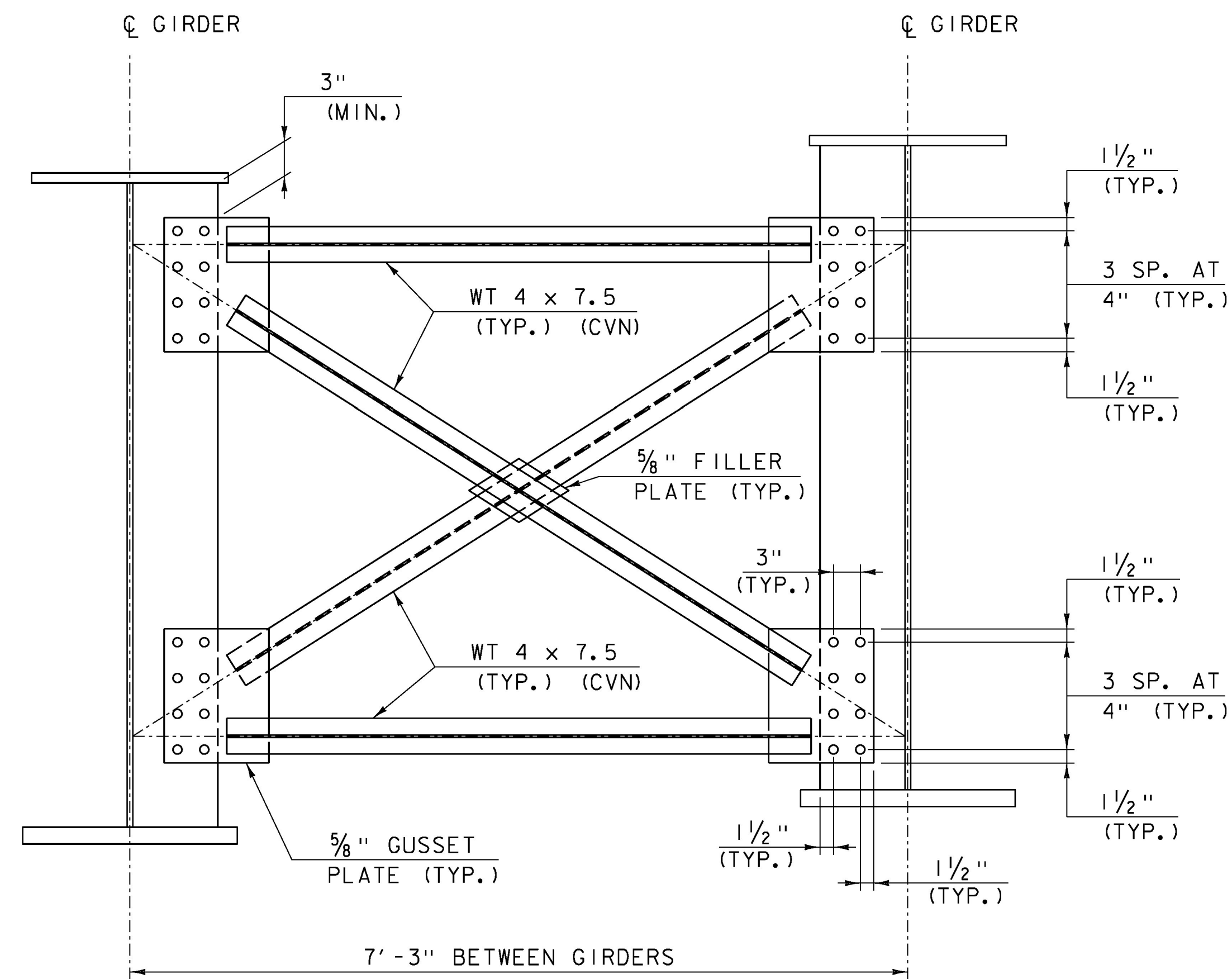
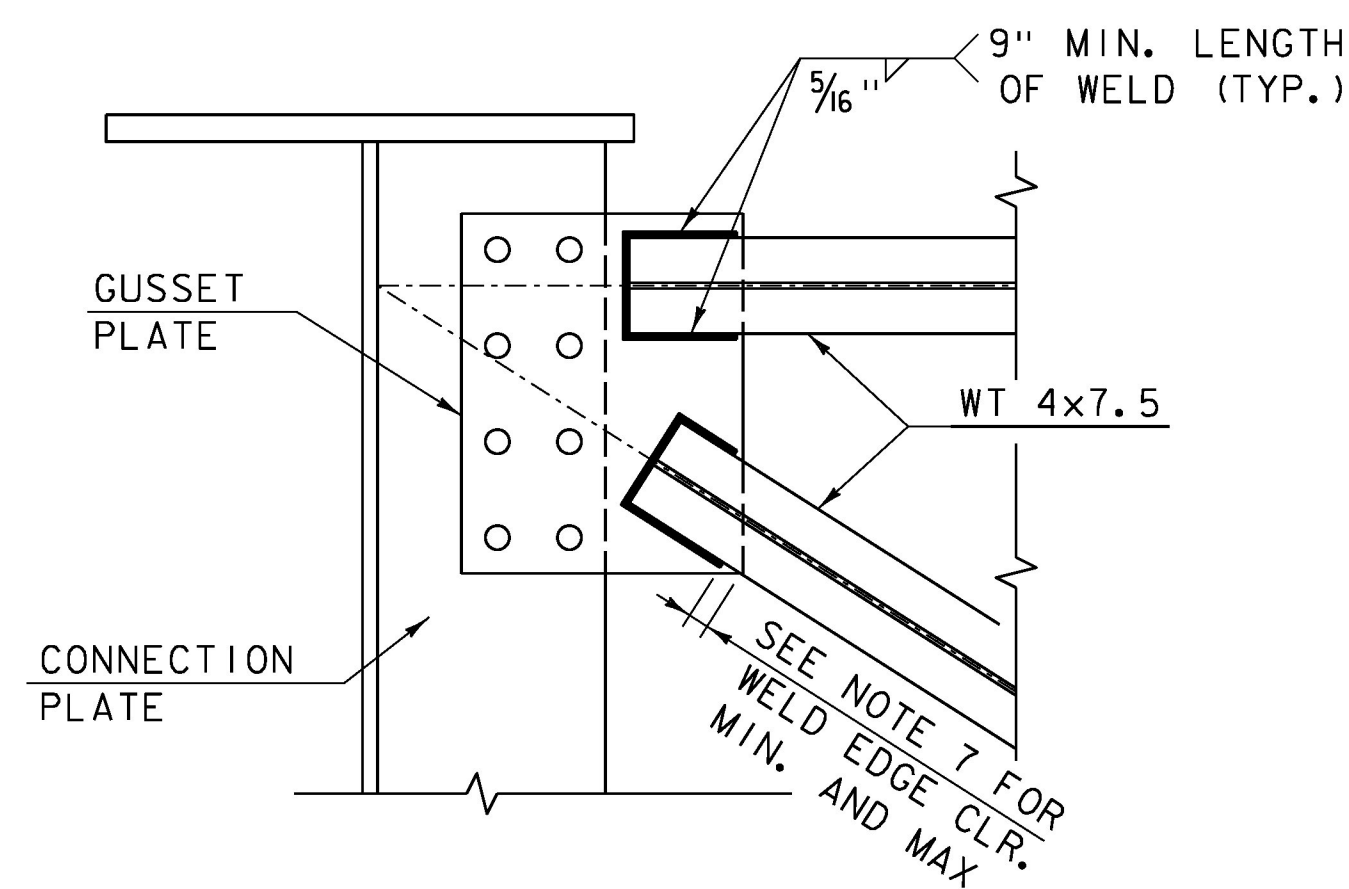


STRUCTURAL STEEL GENERAL NOTES:

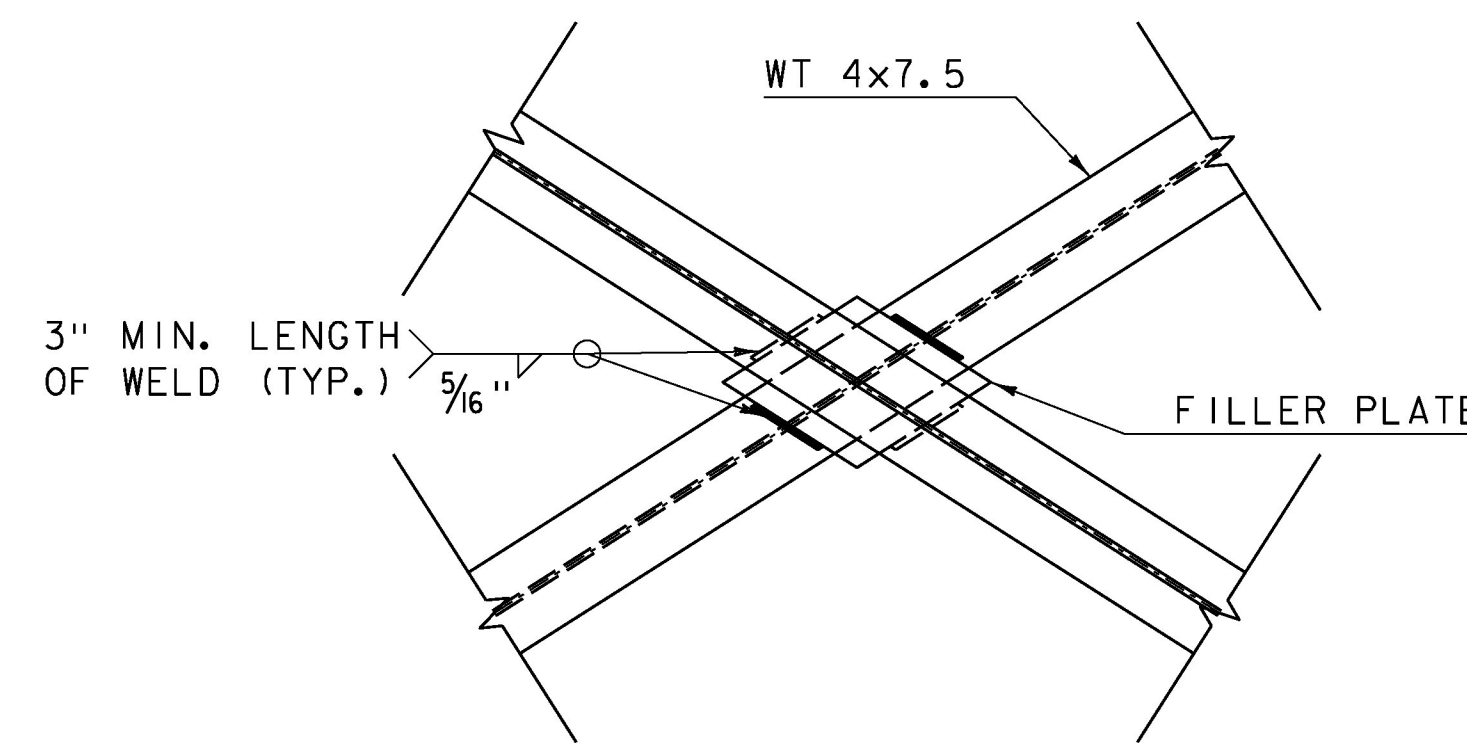
1. ALL FIELD CONNECTIONS SHALL BE MADE WITH $\frac{7}{8}$ " DIAMETER HIGH-STRENGTH BOLTS IN $\frac{5}{16}$ " DIAMETER HOLES, PER SUBSECTION 506.19, UNLESS OTHERWISE SPECIFIED.
2. ALL WELDING SHALL CONFORM TO THE PROVISIONS OF SUBSECTION 506.10.
3. ANY CONNECTIONS THAT ARE NOT DETAILED ON THE PLANS SHALL BE DETAILED BY THE FABRICATOR AND SUBMITTED TO THE STRUCTURES ENGINEER FOR APPROVAL.
4. STRUCTURAL STEEL MEMBERS DESIGNATED "CVN" IN THE PLANS SHALL BE CHARPY V-NOTCH TESTED IN ACCORDANCE WITH SUBSECTION 714.01 OF THE STANDARD SPECIFICATIONS.
5. ENDS OF GIRDERS ARE TO BE VERTICAL IN THEIR FINAL POSITION.
6. AFTER SUPERSTRUCTURE STEEL HAS BEEN ERECTED, ELEVATIONS ALONG THE TOP OF THE GIRDERS SHALL BE TAKEN AS DIRECTED BY THE RESIDENT ENGINEER FOR USE IN DETERMINING FINISHED GRADES.
7. NO WELD FOR $\frac{1}{4}$ " MIN. - $\frac{1}{2}$ " MAX. DISTANCE FROM GUSSET PLATE EDGES.



CROSS FRAME DETAIL
SCALE: 1" = 1'-0"



WT TO GUSSET PLATE WELD DETAIL
SCALE: 1/2" = 1'-0"



WT TO FILLER PLATE WELD DETAIL
SCALE: 1/2" = 1'-0"

CLD 12-0120 MODEL: Superstructure Details

PROJECT NAME: STOWE	
PROJECT NUMBER: BRF 0235(15)	
FILE NAME: z88cl90sup.dgn	PLOT DATE: 5/8/2015
PROJECT LEADER: J. BYATT	DRAWN BY: M. SMITH
DESIGNED BY: J. FRENCH	CHECKED BY: J. BYATT
FRAMING PLAN AND DETAILS (2 OF 2)	SHEET 38 OF 79

