

BOX BEAM GUARDRAIL
 STA 16+71.9 TO 17+01.3 RT
 STA 16+88.4 TO 18+90.1 LT

MANUFACTURED TERMINAL SECTION, TANGENT
 STA 17+01.3 TO 17+15.0 RT
 STA 18+90.1 TO 19+04.4 LT

GUARDRAIL APPROACH SECTION, GALVANIZED 3 RAIL BOX BEAM
 STA 16+40.5 TO 16+71.9 RT
 STA 16+52.7 TO 16+88.4 LT

REMOVAL AND DISPOSAL OF GUARDRAIL
 STA 14+75 TO 14+79 RT
 STA 14+75 TO 15+01 LT
 STA 16+41 TO 17+69 RT
 STA 16+75 TO 17+62 LT

CONSTRUCT DRIVES WITH 5' PAVED APRON
 STA 41+70 TO 42+32 RT (18" GRAVEL)
 STA 18+19 TO 18+85 RT (18" GRAVEL)

END APPROACH
 STA 21+00.00

VT108 STA 15+50.00 =
 CHANNEL STA 52+00.00
 $\Delta = 50^\circ 00' 00''$
 (TANGENT TO CURVE)

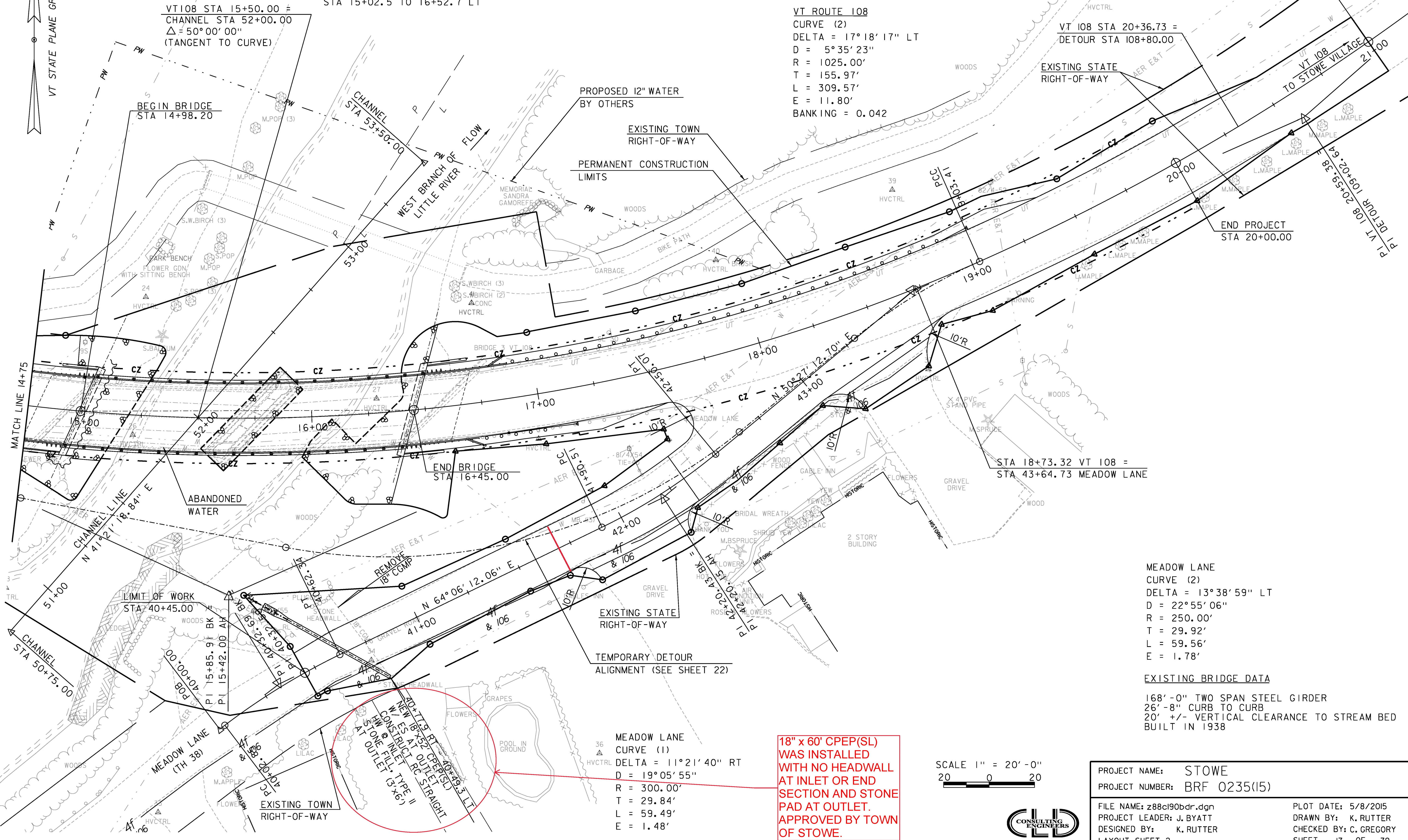
BRIDGE RAILING, GALVANIZED 3 RAIL BOX BEAM
 STA 14+90.9 TO 16+40.5 RT
 STA 15+02.5 TO 16+52.7 LT

VT ROUTE 108
 CURVE (2)
 DELTA = $17^\circ 18' 17''$ LT
 D = $5^\circ 35' 23''$
 R = 1025.00'
 T = 155.97'
 L = 309.57'
 E = 11.80'
 BANKING = 0.042

VT 108 STA 20+36.73 =
 DETOUR STA 108+80.00

EXISTING STATE RIGHT-OF-WAY

END PROJECT
 STA 20+00.00



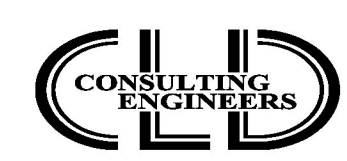
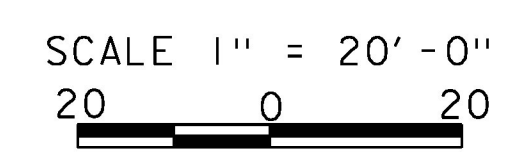
STA 18+73.32 VT 108 =
 STA 43+64.73 MEADOW LANE

MEADOW LANE
 CURVE (2)
 DELTA = $13^\circ 38' 59''$ LT
 D = $22^\circ 55' 06''$
 R = 250.00'
 T = 29.92'
 L = 59.56'
 E = 1.78'

EXISTING BRIDGE DATA
 168'-0" TWO SPAN STEEL GIRDER
 26'-8" CURB TO CURB
 20' +/- VERTICAL CLEARANCE TO STREAM BED
 BUILT IN 1938

MEADOW LANE
 CURVE (1)
 DELTA = $11^\circ 21' 40''$ RT
 D = $19^\circ 05' 55''$
 R = 300.00'
 T = 29.84'
 L = 59.49'
 E = 1.48'

18" x 60' CPEP(SL) WAS INSTALLED WITH NO HEADWALL AT INLET OR END SECTION AND STONE PAD AT OUTLET. APPROVED BY TOWN OF STOWE.



PROJECT NAME:	STOWE	PLOT DATE:	5/8/2015
PROJECT NUMBER:	BRF 0235(15)	DRAWN BY:	K. RUTTER
FILE NAME:	z88c190bdr.dgn	CHECKED BY:	C. GREGORY
PROJECT LEADER:	J. BYATT	LAYOUT SHEET 2	SHEET 17 OF 79

CLD 12-0120 MODEL:02