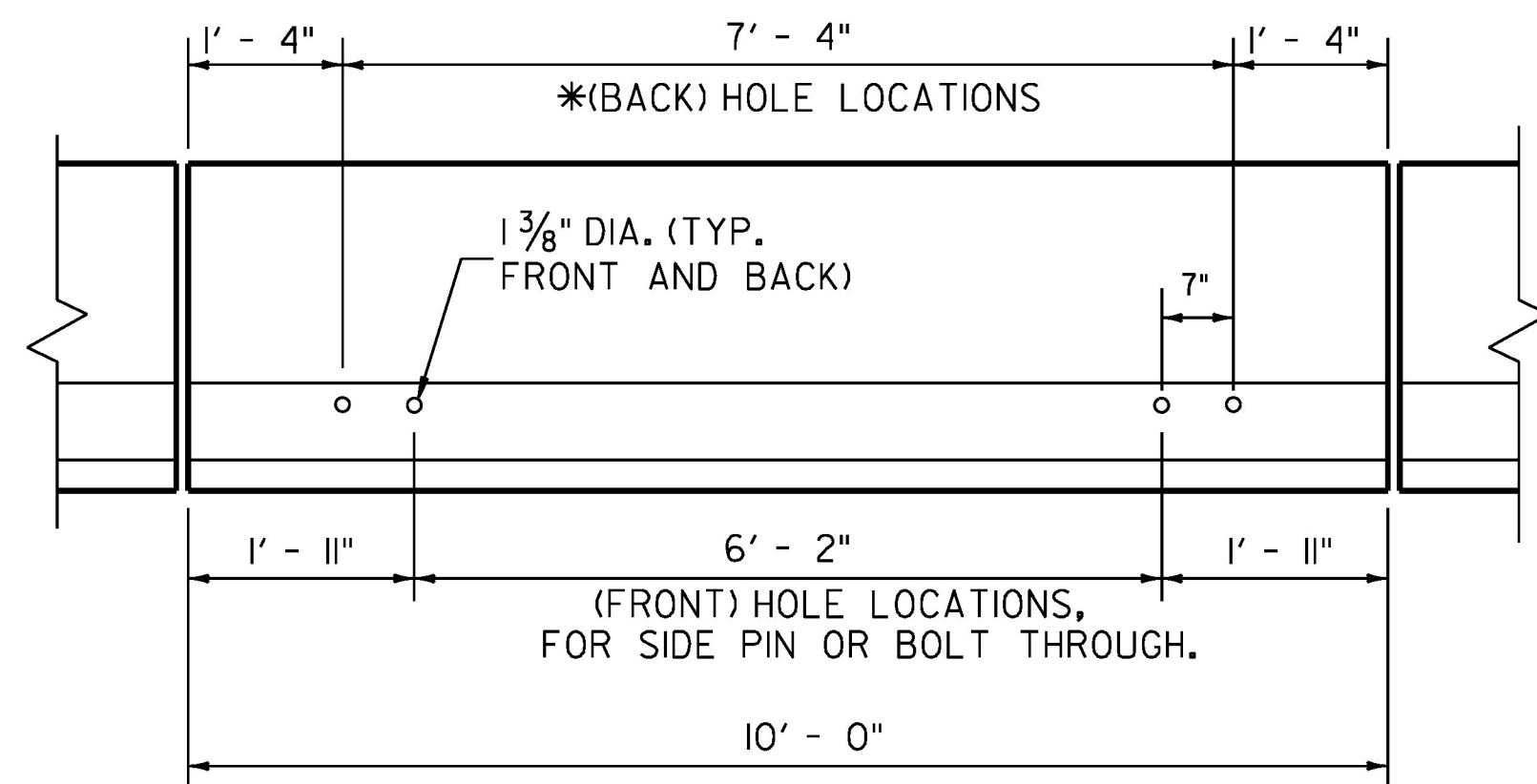
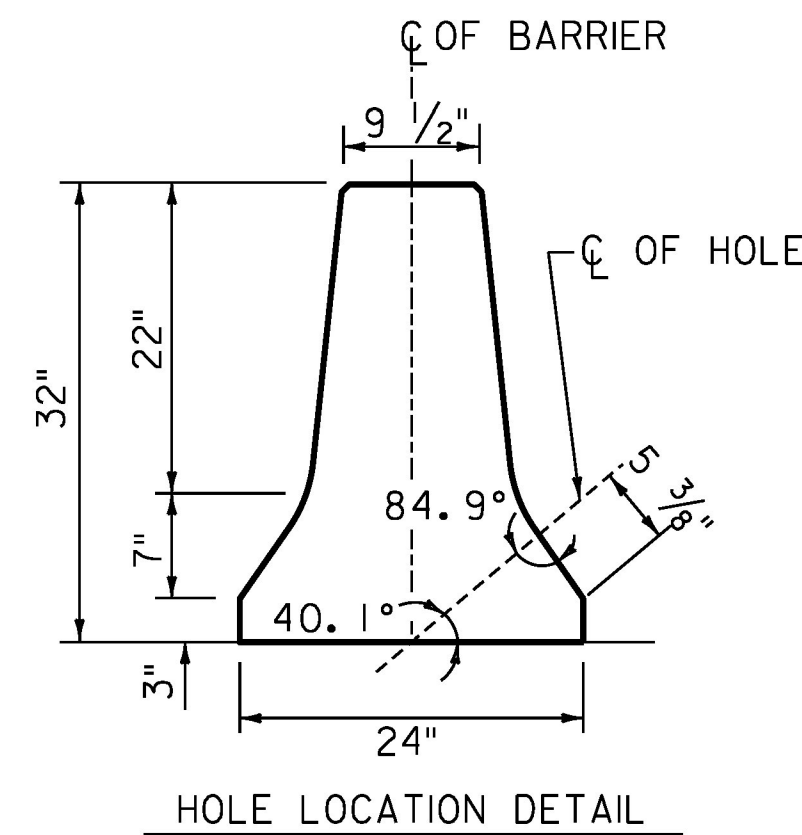


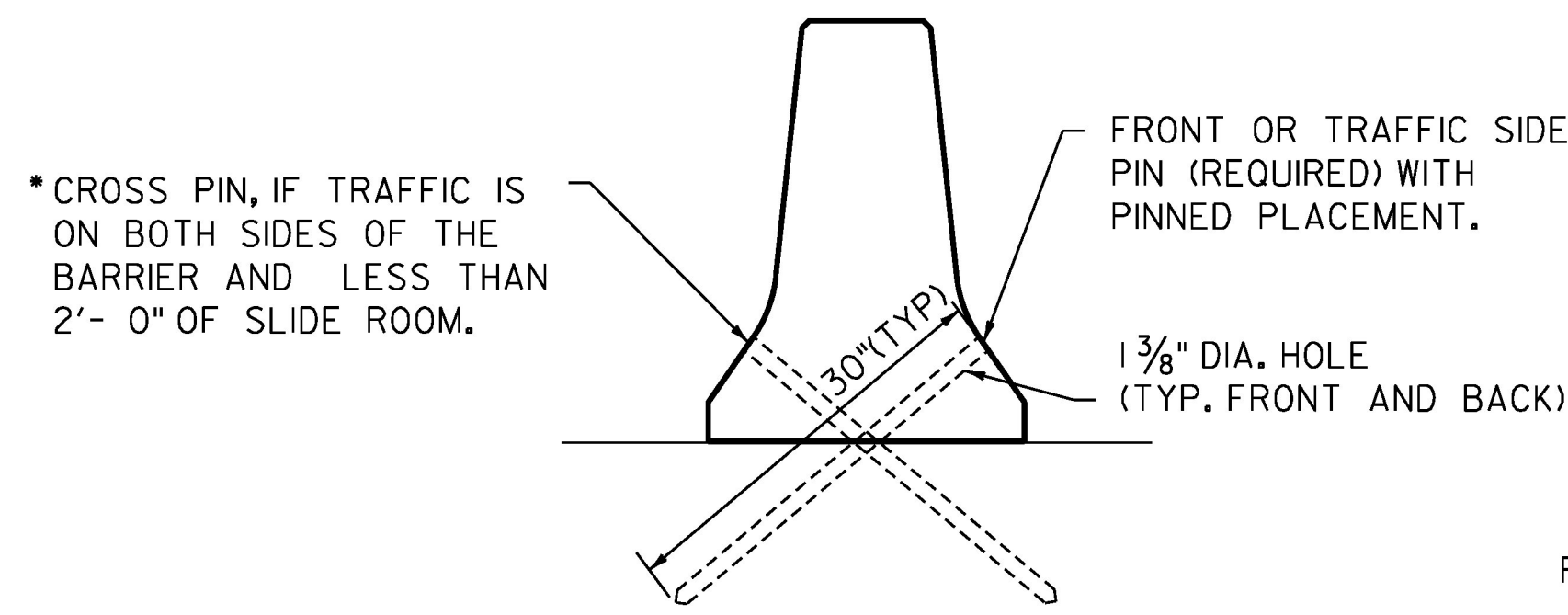
ANCHORED TEMPORARY TRAFFIC BARRIER
(NOT TO SCALE)



DETAIL 1



HOLE LOCATION DETAIL



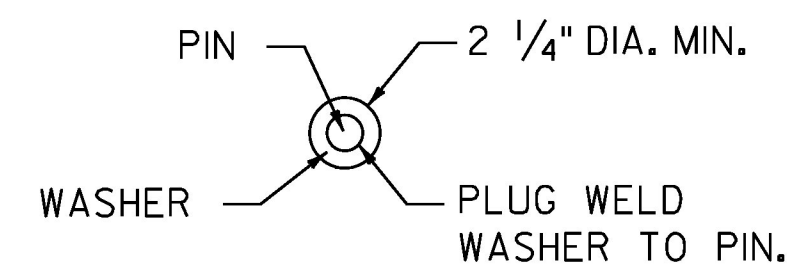
*CROSS PIN, IF TRAFFIC IS ON BOTH SIDES OF THE BARRIER AND LESS THAN 2'-0" OF SLIDE ROOM.

FRONT OR TRAFFIC SIDE PIN (REQUIRED) WITH PINNED PLACEMENT.

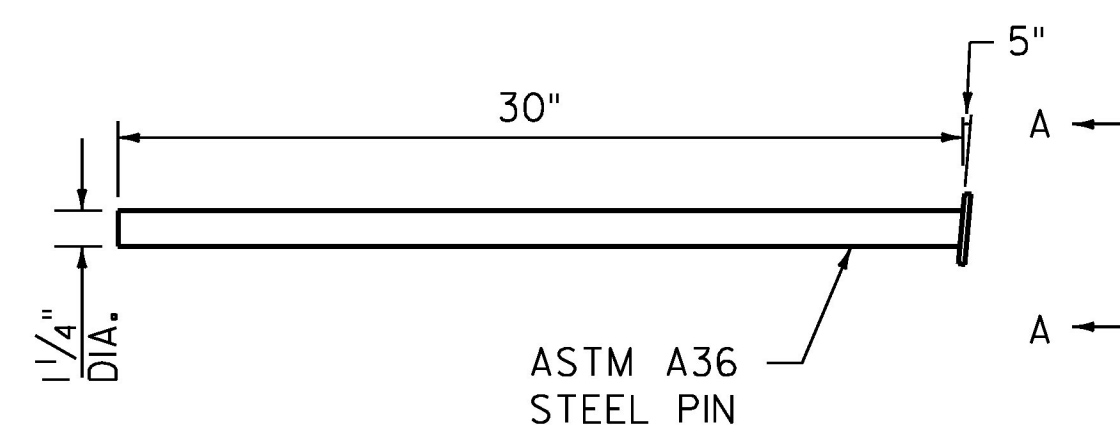
1 3/8" DIA. HOLE (TYP. FRONT AND BACK)

DETAIL 2

PLACEMENT ON BITUMINOUS CONCRETE PAVEMENT OR TREATED BASE MATERIAL (30" PIN REQUIRED)



VIEW A-A



(30") PIN DETAIL
SEE DETAIL 2

CORE DRILLING EXISTING BARRIER

CORE DRILLING EXISTING CONCRETE BARRIER IS PERMITTED. HOLES SHALL BE DRILLED WITH CORING OR MASONRY DRILLING TYPE EQUIPMENT. PERCUSSION (STAR) DRILLING SHALL NOT BE USED. A SPECIAL DRILL BIT (TO CUT THROUGH EXISTING REINFORCING) WILL LIKELY BE REQUIRED. SPALLS IN THE CONCRETE EXCEEDING 1/2" SHALL BE PATCHED.

GENERAL NOTES

1. THE DETAILS PROVIDED ARE INTENDED TO BE A SCHEMATIC ONLY. THE EXACT LAYOUT OF THE ANCHORS SHALL BE DETERMINED BY THE CONTRACTOR AND APPROVED BY THE ENGINEER AND BE BASED FROM MEASUREMENT OF THE BARRIER ONSITE. THE ANCHORING SYSTEM SHALL BE CRASH TESTED FOR A MINIMUM TL-3 RATING.
2. THESE DETAILS PROVIDE A METHOD OF LATERALLY RESTRAINING PRECAST CONCRETE BARRIER TO LIMIT DEFLECTIONS UNDER NORMALLY EXPECTED PASSENGER VEHICLE IMPACTS. THESE DETAILS ARE INTENDED FOR USE IN WORK ZONES, PRIMARILY ON PAVEMENT WHERE TEMPORARY BARRIER MUST BE PLACED LESS THEN 2 FEET FROM THE LONGITUDINAL EDGE OF THE DECK OR DROPOFF AND PARALLEL TO THE DIRECTION OF TRAVEL. OTHER APPLICATIONS OF THESE DETAILS ARE ACCEPTABLE AS DIRECTED BY THE ENGINEER.
3. EACH PRECAST CONCRETE BARRIER SECTION SHALL HAVE A MINIMUM OF TWO OR TOTAL OF FOUR 1 3/8" ID, HOLES FORMED OR CORED THROUGH THE BARRIER.
4. THE DRILLING OF THE TRAVEL SURFACE IS ACCOMPLISHED BY PLACING THE PRE-DRILLED BARRIER SECTION ON THE TRAVEL SURFACE IN THE DESIRED POSITION. THE HOLE IS DRILLED WITH THE BIT PASSING THROUGH THE HOLE IN THE BARRIER. THE BIT IS TO BE INSERTED INTO THE HOLE IN THE BARRIER SO THAT THE TRAVEL SURFACE IS DRILLED TO A POINT WHICH IS SLIGHTLY MORE THAN THE PIN LENGTH.
5. NOTE THAT STEEL WASHERS HAVE BEEN WELDED TO THE TOP OF THE STEEL PINS TO AID IN THE REMOVAL OF THE PINS, WHEN THE BARRIER IS REMOVED.
6. PAYMENT FOR FORMING OR CORING OF HOLES IN THE BARRIER, DRILLING OF HOLES IN BRIDGE DECK OR PAVEMENT, FABRICATION AND MATERIALS FOR THE 1 1/4" PINS, INSTALLATION OF PINS, AND ANY REPAIR TO THE BARRIER SHALL BE CONSIDERED INCIDENTAL TO ITEM 528.II, TWO-WAY TEMPORARY BRIDGE.
7. THE BARRIER AND TRAVEL SURFACE WILL BE REPAIRED AS DIRECTED BY THE ENGINEER.
8. PROVIDE GALVANIZED BOLTS, NUTS, AND PLATE WASHERS. ALL STEEL PINS SHALL BE GALVANIZED. ALL NUTS, BOLTS, PLATE WASHERS, AND PINS SHALL BE INCIDENTAL TO ITEM 528.II, TWO-WAY TEMPORARY BRIDGE.

NOT TO SCALE

PROJECT NAME: STOWE
PROJECT NUMBER: BRF 0235(15)

FILE NAME: z88cl90typ.dgn
PROJECT LEADER: J. BYATT
DESIGNED BY: K. RUTTER
MISCELLANEOUS DETAILS

PLOT DATE: 6/1/2015
DRAWN BY: M. SMITH
CHECKED BY: N. FOX
SHEET 6 OF 79

