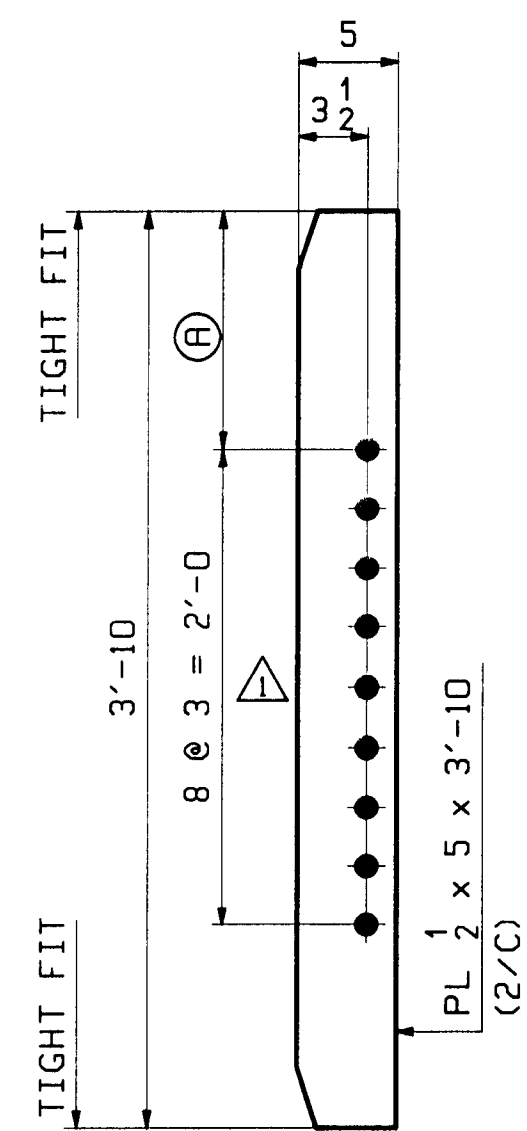
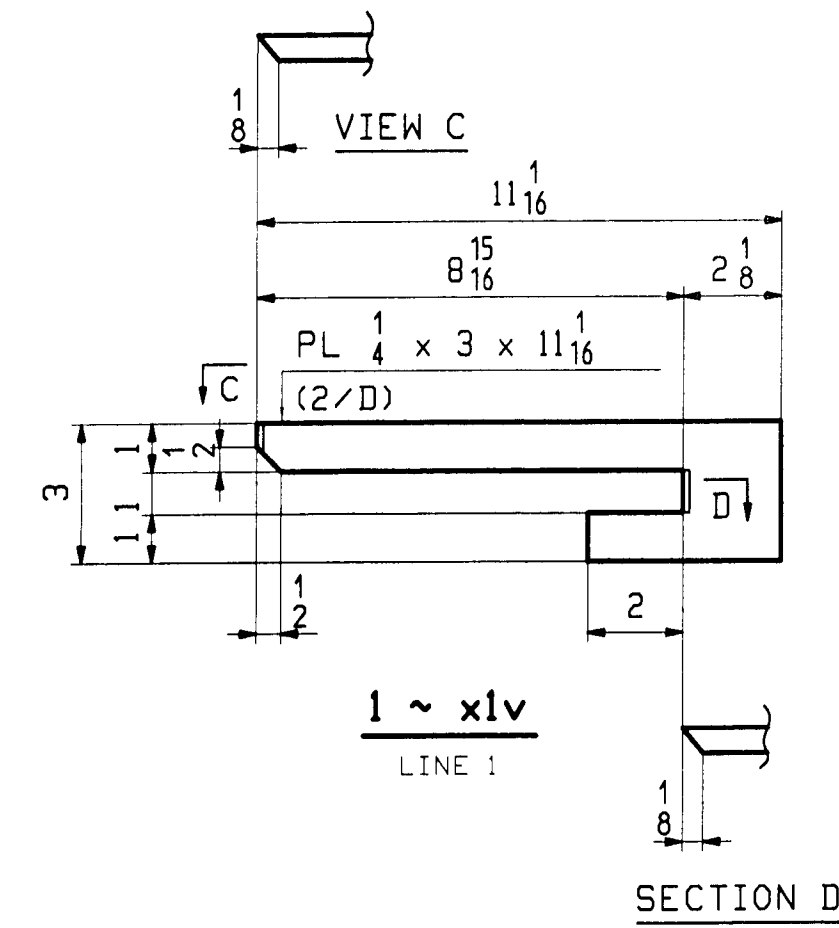
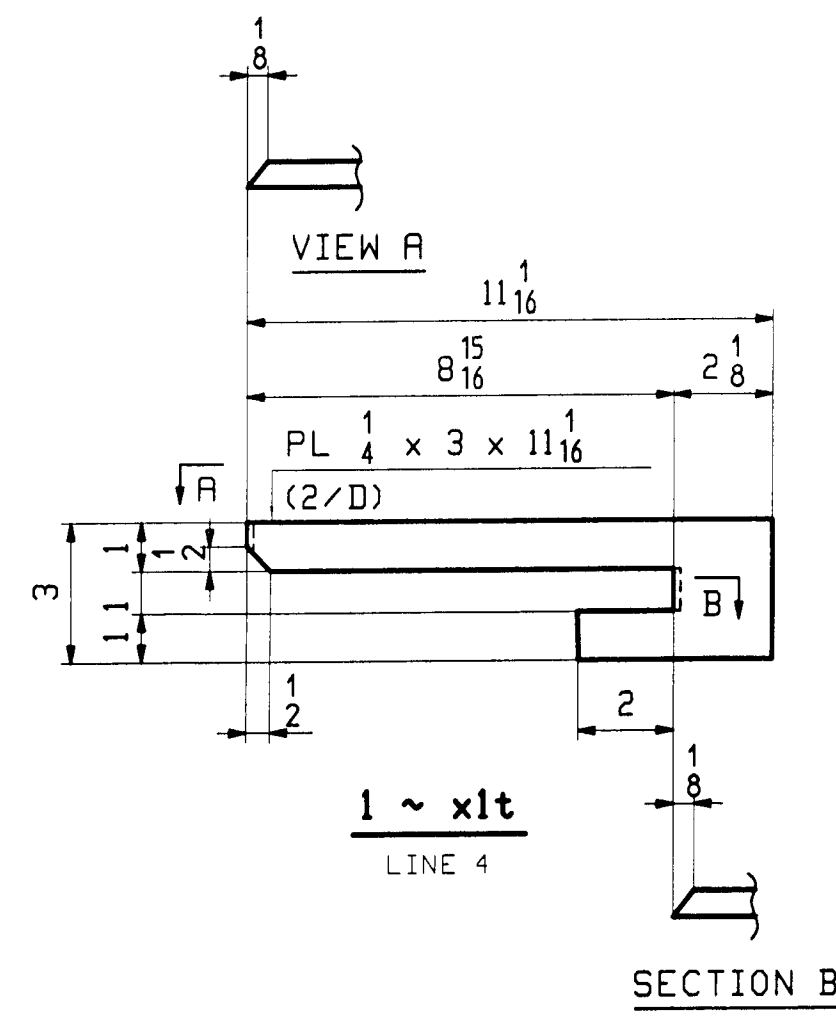


16 ~ xla  
BRG STIFF



MARK "A"  
INT DIAPH CONN

MARK "A"	QTY	(A)	
xlb	12	5 3/4	LOW END
xic	1	7 1/8	DROP 1 3/8
xid	1	8	DROP 2 1/4
xif	2	8 3/4	DROPS 2 13/16 & 3 1/8
xig	2	9 5/8	DROPS 3 11/16 & 4
xik	2	10 3/16	DROPS 4 5/16 & 4 9/16
xim	2	11 1/16	DROPS 5 3/16 & 5 7/16
xin	1	11 13/16	DROP 6 1/16
xip	1	1'-0 3/4	DROP 7



NOTES:  
 ALL MATERIAL SHALL BE A709-50W.  
 ALL BOLT HOLES SHALL BE 15/16" Ø FOR 7/8" Ø HSB.  
 FOR GENERAL NOTES SEE DRAWING GNI.

REV.	DATE	REMARKS	DWN	CHK	APVL	SHOP
6/18		ADDED HOLES (INT. DIAPH.)	ZAD	WL		
						5/23/08
						6/20/08
MATERIAL		SURFACE PREP & PAINT	HOLES		SHOP BOLTS	
A709-50W		AS NOTED ON GNI	15/16" Ø		NONE	
DESCRIPTION: GIRDER STANDARD DETAILS						
CASCO BAY STEEL STRUCTURES, INC.						
75 SPRING HILL ROAD SACO, MAINE 04072						
PHONE (207) 282-7360 FAX. (207) 282-1179						
STRUCTURE: ROUTE No VT 11 MINOR ARTERIAL BRIDGE NO 43 OVER MIDDLE BRANCH OF WILLIAMS RIVER TOWN OF CHESTER COUNTY OF WINDSOR				DRAWN	DATE	
				JTB	05/01	
				CHKD	DATE	
				JF	05/21	
LOCATION: CHESTER, VT				JOB NO.	DNG NO.	
PROJ NO. BRF 016-1(25)				369	X1	
CUSTOMER: VT ROT					REV.	(A)

FILE: J:\04\_10\_08\08\_05\_01\108\_05\_01\_01.dwg  
 PLOT: 10/21/08 10:10:10 AM  
 PLOTTER: HP DesignJet 500