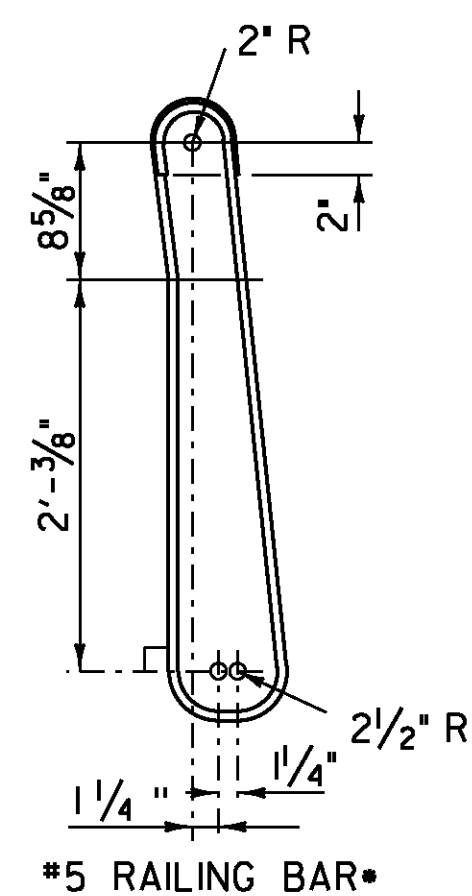


DELINEATOR NOTES

NTS

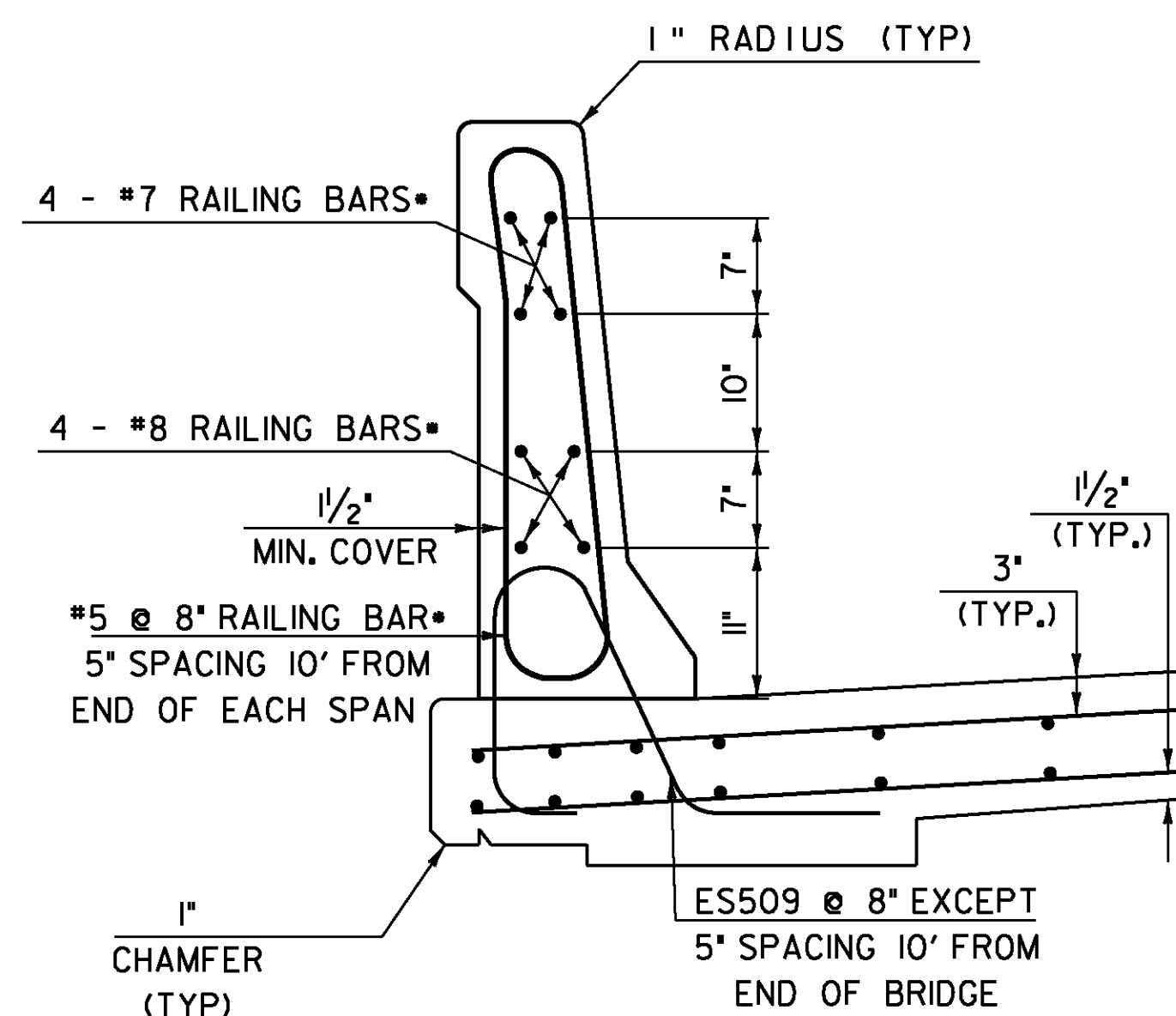
1. PAYMENT FOR DELINEATORS SHALL BE INCLUDED IN THE UNIT PRICE BID FOR ITEM #900.640 SPECIAL PROVISION, (BRIDGE RAILING, F-SHAPE CONCRETE).

2. DELINEATORS SHALL BE EVENLY SPACED ACROSS THE ENTIRE LENGTH OF BRIDGE RAILING BUT NOT WITHIN 2' OF ANY JOINT OPENING NOR A SPACING OF MORE THAN 30'.

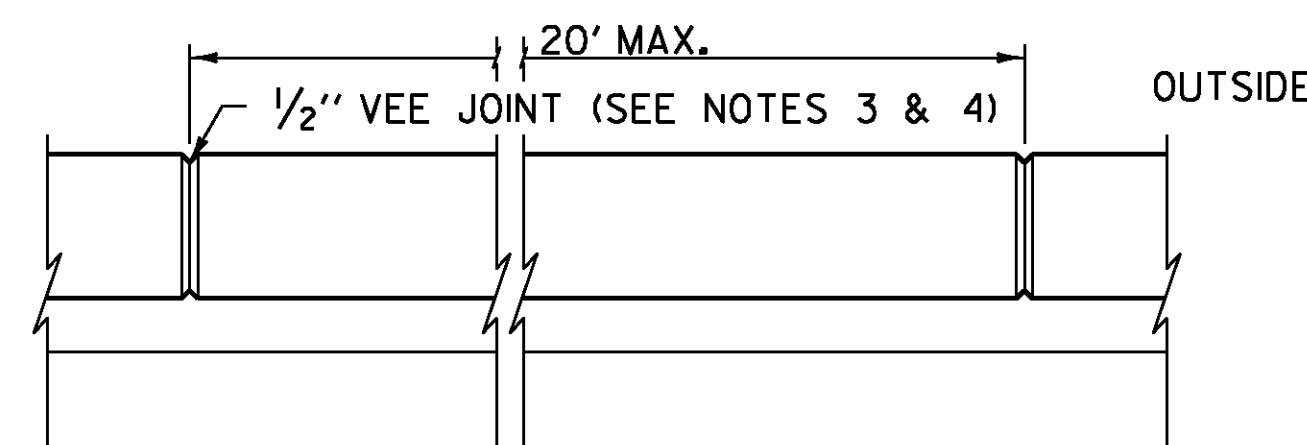


BAR BENDING DETAIL

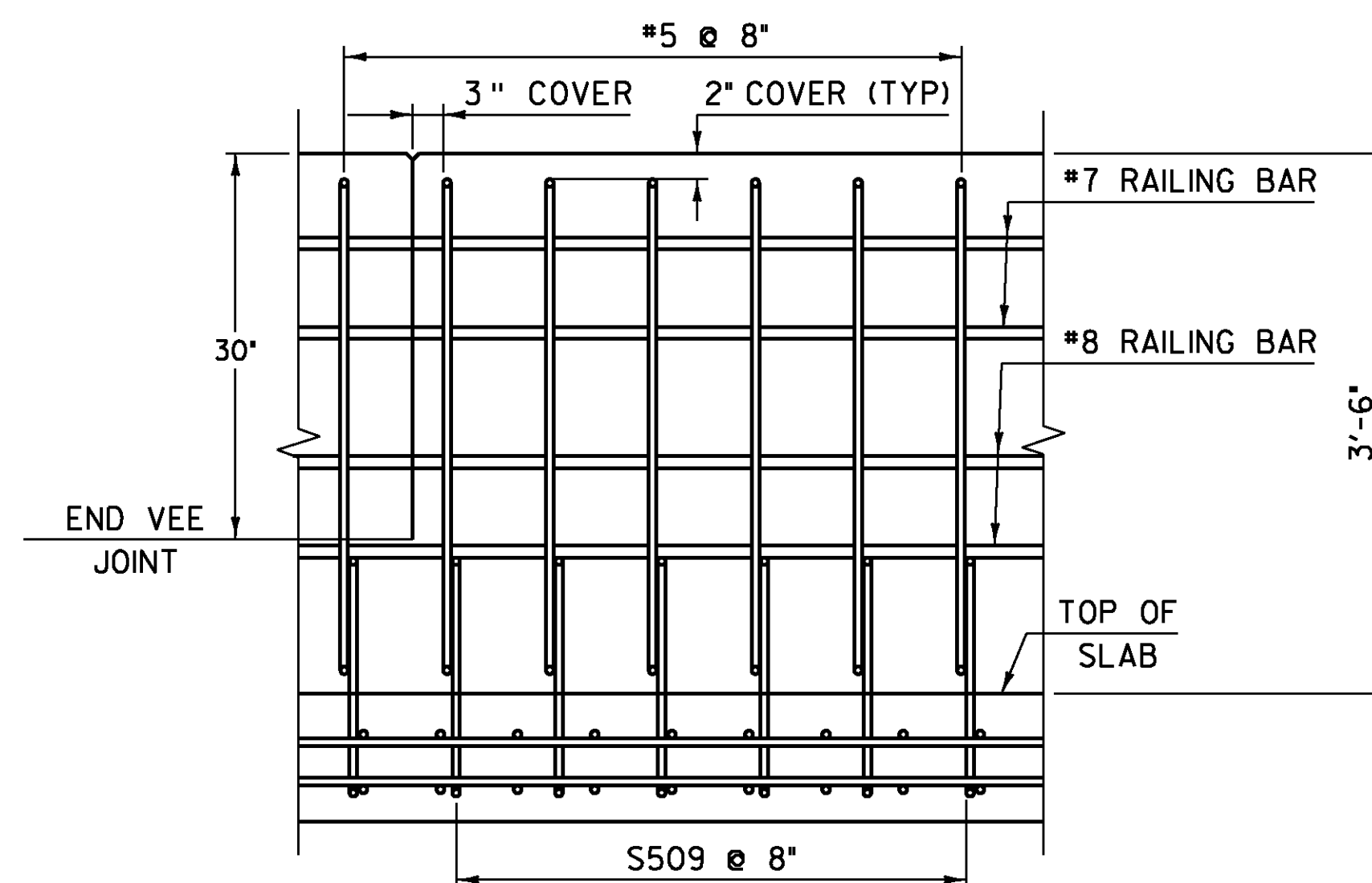
*THE RAILING BARS SHALL BE INCLUDED IN THE UNIT BID PRICE OF 900.640 *F-SHAPE CONCRETE RAIL*.



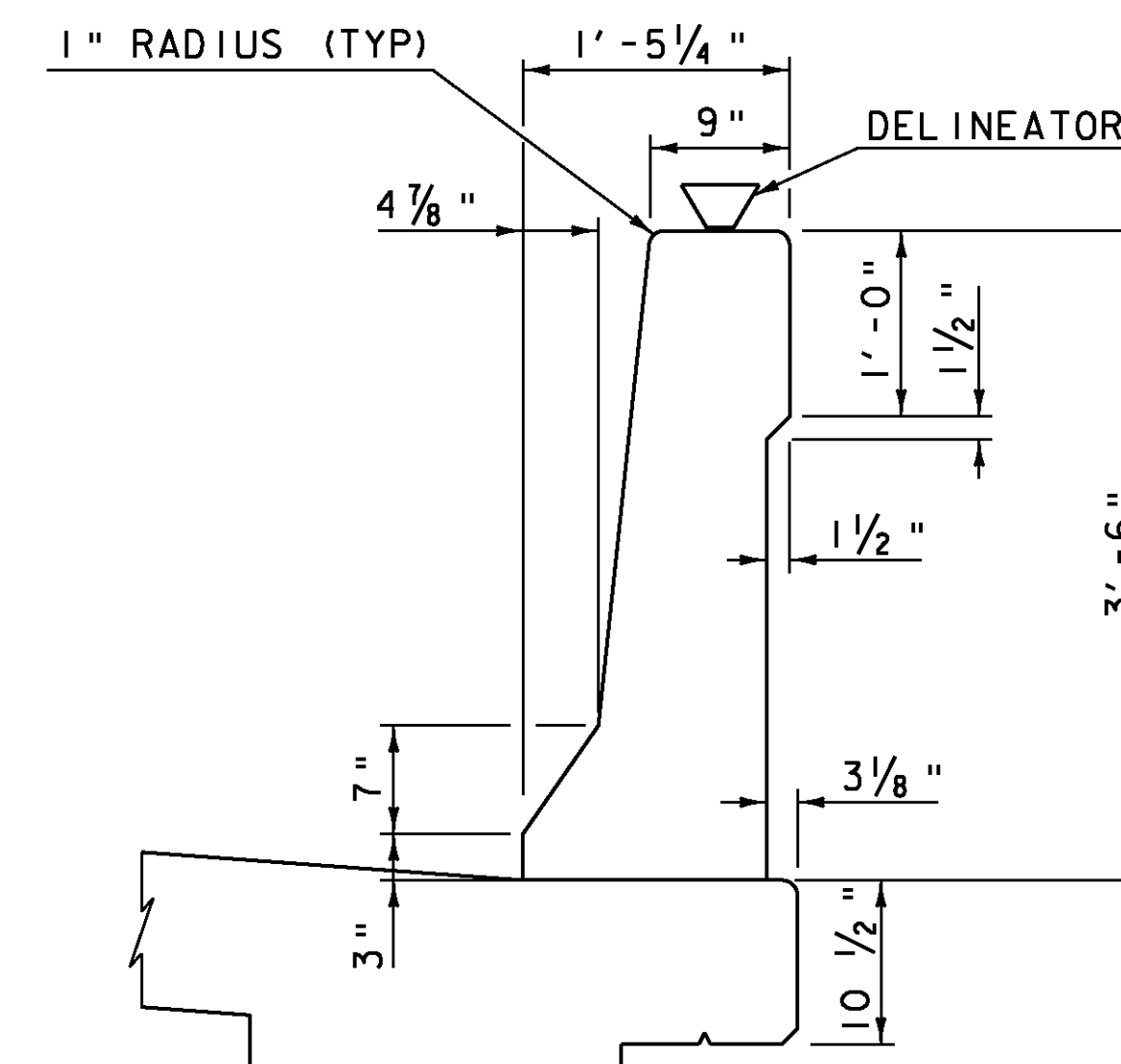
**3'-6" HIGH F-SHAPE RAIL
(SHOWING RAIL REINFORCEMENT)**



PLAN VIEW OF PARAPET



**ELEVATION
(SHOWING PARAPET & DECK REINFORCEMENT)**



F-SHAPE RAIL DETAIL ON BRIDGE

BRIDGE RAIL NOTES:

1. RAIL MEETS TEST LEVEL 5 REQUIREMENTS OF NCHRP REPORT 350.
2. MATERIAL REQUIREMENTS FOR BRIDGE RAIL ONLY:
 - REINFORCING STEEL SHALL BE EPOXY COATED, GRADE 60, CONFORMING TO SUBSECTIONS 713.01 AND 713.07 (b).
 - CONCRETE SHALL BE PER SPECIFICATION 900.640 SPECIAL PROVISION (BRIDGE RAILING, F-SHAPE CONCRETE).
3. 1/2" VEE JOINTS SHALL BE PROVIDED IN EACH FACE OF THE CONCRETE RAIL AT INTERVALS NOT TO EXCEED 20 FEET.
4. THE 1/2" VEE JOINT SHALL END 30" FROM THE TOP OF THE CONCRETE RAIL.
5. THE BAR BENDING DETAILS FOR THE REINFORCING STEEL FOR THE CONCRETE RAIL HAS BEEN SHOWN ON THIS SHEET. THE #7 AND #8 RAILING BARS SHALL BE CONTINUOUS THROUGH THE VEE JOINT FOR THE LENGTH OF THE BRIDGE.
6. LAP LENGTH FOR #7 BARS SHALL BE 3'-6". LAP LENGTH FOR #8 BARS SHALL BE 4'-7"

PROJECT:	CHESTER	PROJECT NO.:	BRF 016-1 (25)
DESIGN FILE NAME:	88b194\structures\s88b194rail.dgn	PLOT DATE:	16-MAR-2011
IPARM FILE NAME:	s88b194raildet.i	DRAWN BY:	L.STONE
DESIGNED BY:	E.L.RUSTAY	CHECKED BY:	R.S.YOUNG
SQUAD LEADER:	C.P.WILLIAMS		
BRIDGE RAIL DETAILS		SHEET:	33 OF 50

ALL DETAILS NOT TO SCALE