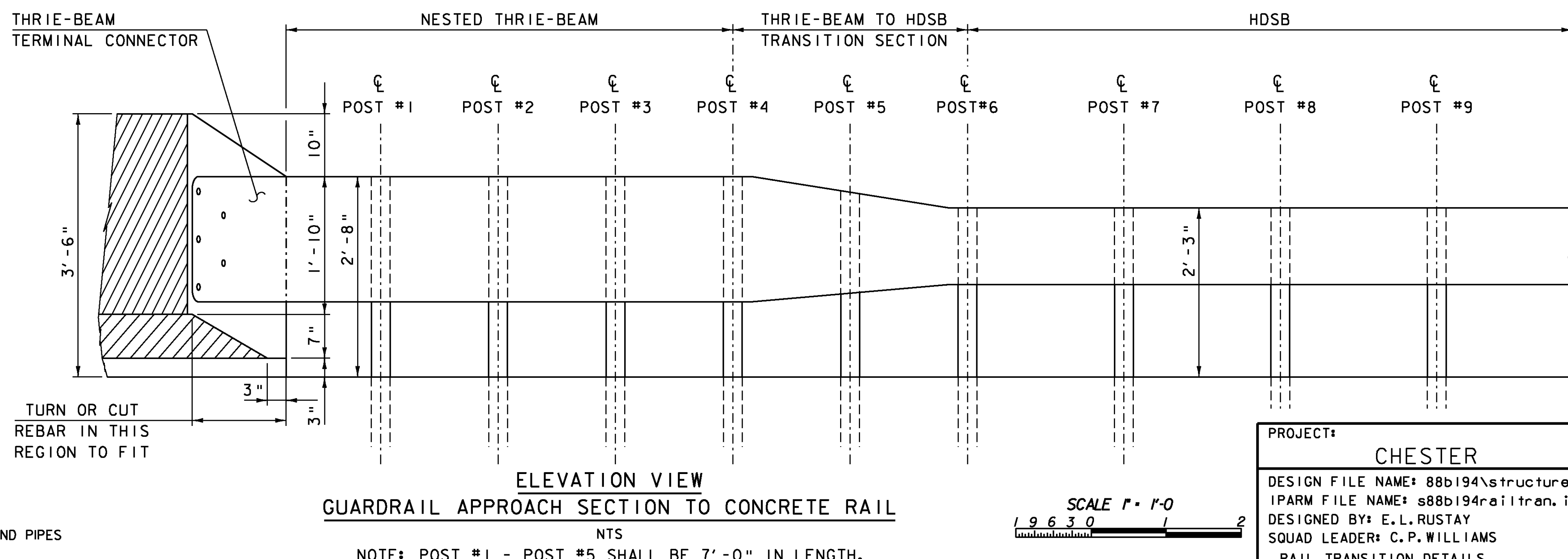
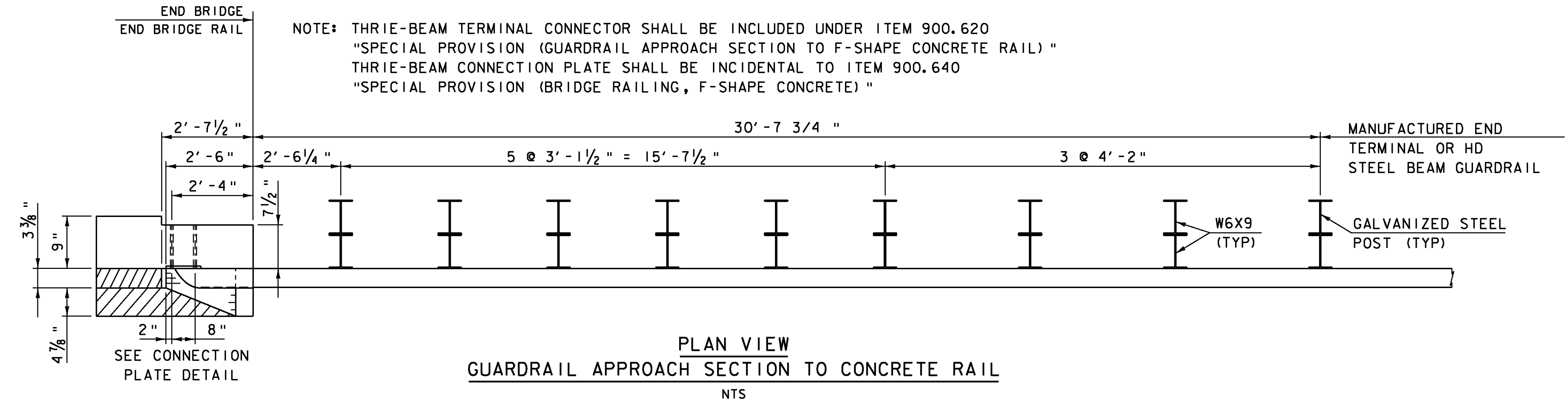
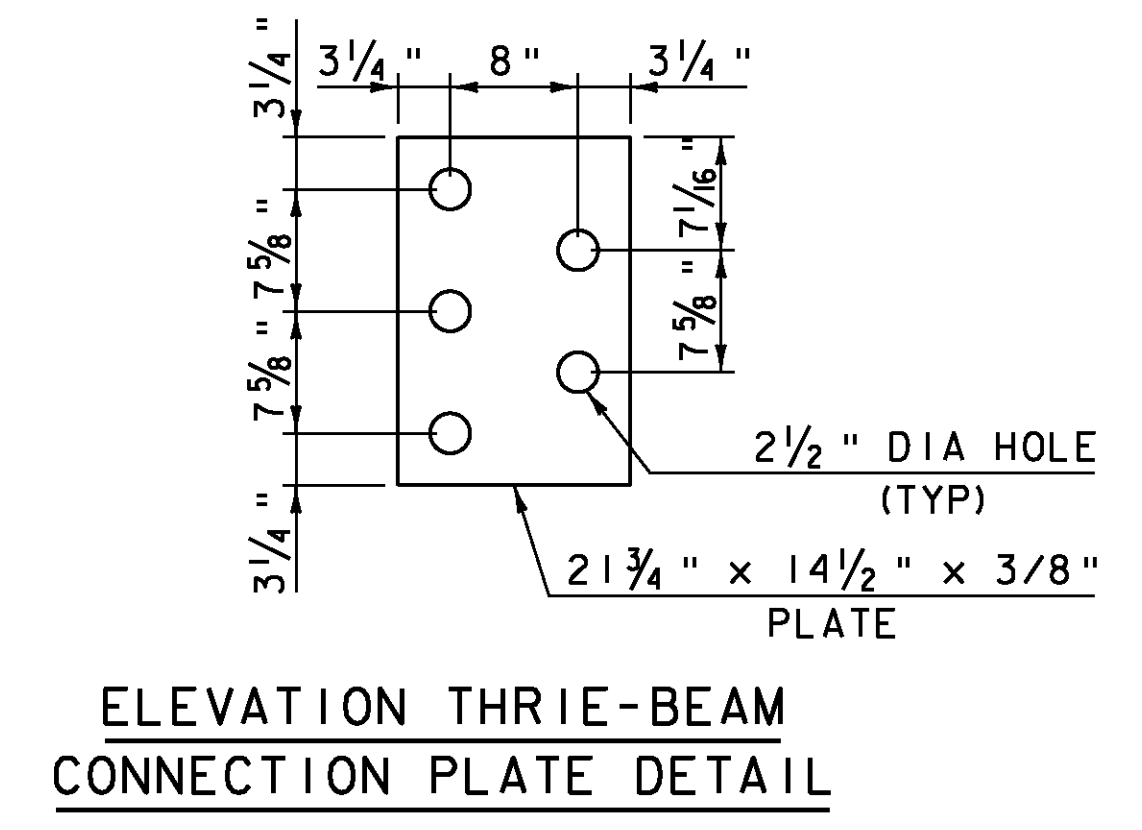


* BOLTS FOR THE THRIE-BEAM CONNECTION PLATE SHALL BE DOUBLE NUTTED. THE FIRST NUT SHALL BE BACKED OFF ENOUGH TO ALLOW HORIZONTAL MOVEMENT.



NOTE: POST #1 - POST #5 SHALL BE 7'-0" IN LENGTH.



PROJECT:	CHESTER	PROJECT NO.:	BRF 016-1 (25)
DESIGN FILE NAME:	88b194\structures\s88b194rail.dgn	PLOT DATE:	16-MAR-2011
IPARM FILE NAME:	s88b194railtran.i	DRAWN BY:	L. STONE
DESIGNED BY:	E.L. RUSTAY	CHECKED BY:	R.S. YOUNG
SQUAD LEADER:	C.P. WILLIAMS		
RAIL TRANSITION DETAILS			SHEET: 32 OF 50

NOTE: PLATES SHALL BE ASTM A572, GRADE 50. STANDARD PIPE SHALL BE ASTM A500, GRADE B. PLATES AND PIPES SHALL BE GALVANIZED AFTER FABRICATION ACCORDING TO SUBSECTION 506.J5.