

ENDS OF BEAMS SHALL BE FABRICATED TO BE VERTICAL IN ERECTED POSITION AFTER ALL DEAD LOADS HAVE BEEN PLACED.

6 3/4 " X 1/2 " BEARING STIFFENER

SINGLE NUT W/ 4"x4"x1/2" PLATE WASHER. NUT MAY BE TIGHTENED TO FACILITATE STEEL GIRDER ERECTION, BUT PRIOR TO CONCRETE PLACEMENT NUT SHALL BE BACKED OFF 1/8"

1" SOLE PLATE*
1/2" PLATE WASHER

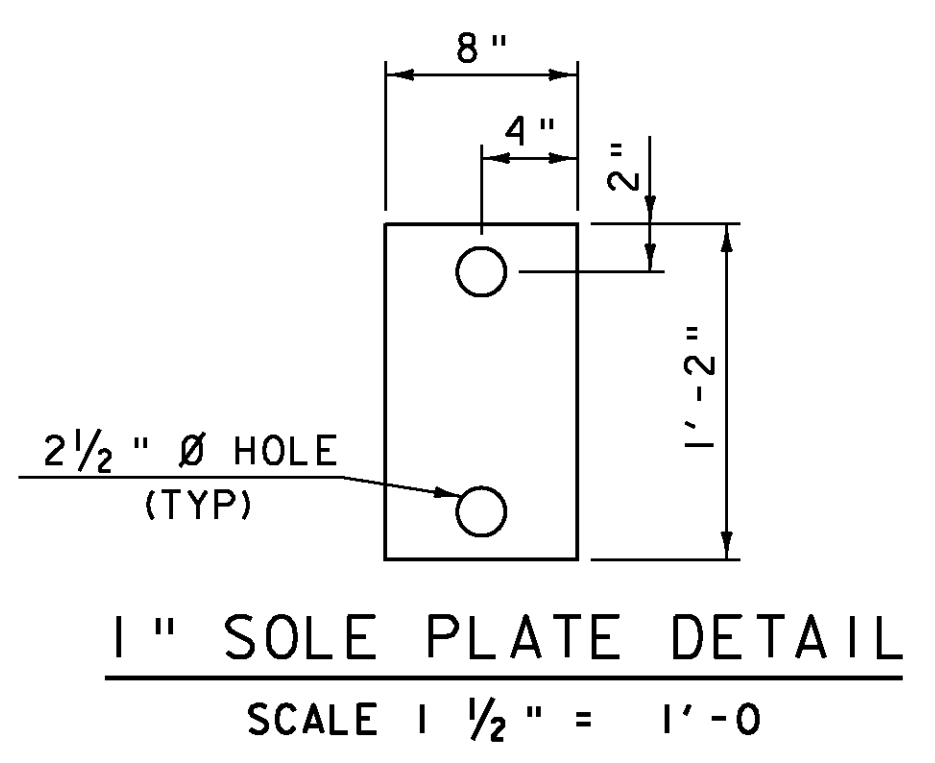
DOUBLE NUT W/ 4"x4"x1/2" PLATE WASHER. ELEVATION OF TOP OF SOLE PLATE SHALL BE SET TO THEORETICAL BRIDGE SEAT ELEVATIONS.

36" X 2" Ø GR 50 OR HIGHER STRENGTH SWEDGED GALVANIZED ANCHOR BOLT THREADED 18", WITH 18" MIN EMBEDMENT, DOUBLE NUT

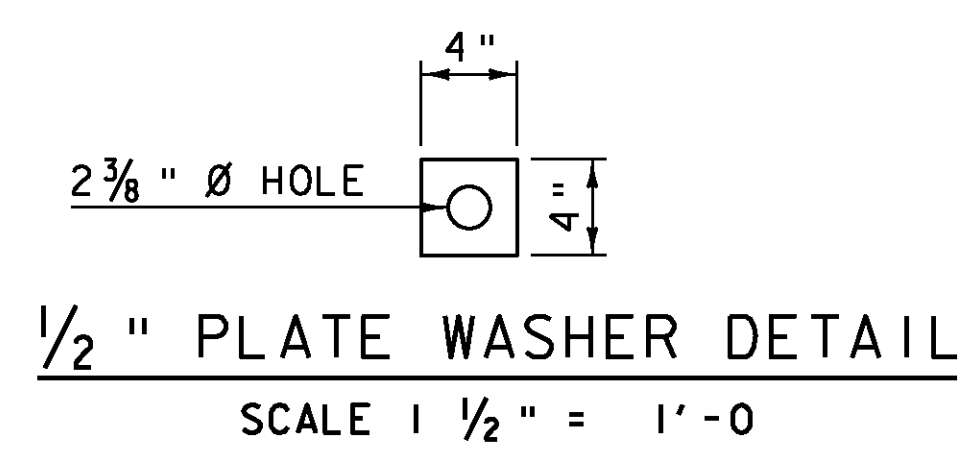
THEORETICAL TOP OF SOLE PLATE ELEVATIONS		
ABUTMENT #1	ABUTMENT #2	GIRDER #1
935.47	934.83	GIRDER #1
936.11	935.13	GIRDER #2
936.62	935.31	GIRDER #3
937.01	935.37	GIRDER #4

*GREASE TOP OF SOLE PLATE BEFORE GIRDER PLACEMENT

ELEVATION VIEW
END OF STEEL
MEMBER AT ABUTMENT
SCALE 1 1/2" = 1'-0"



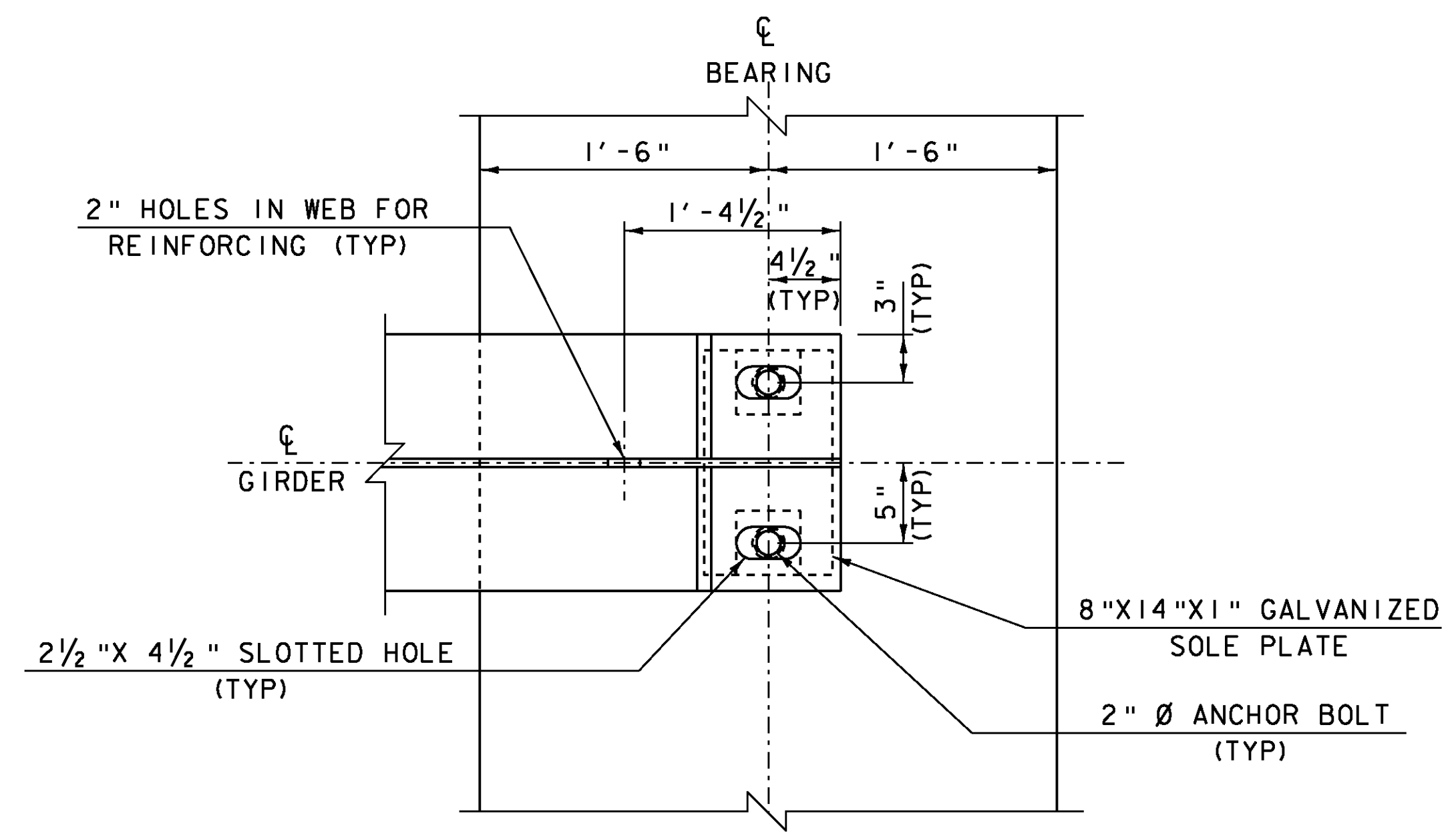
1" SOLE PLATE DETAIL
SCALE 1 1/2" = 1'-0"



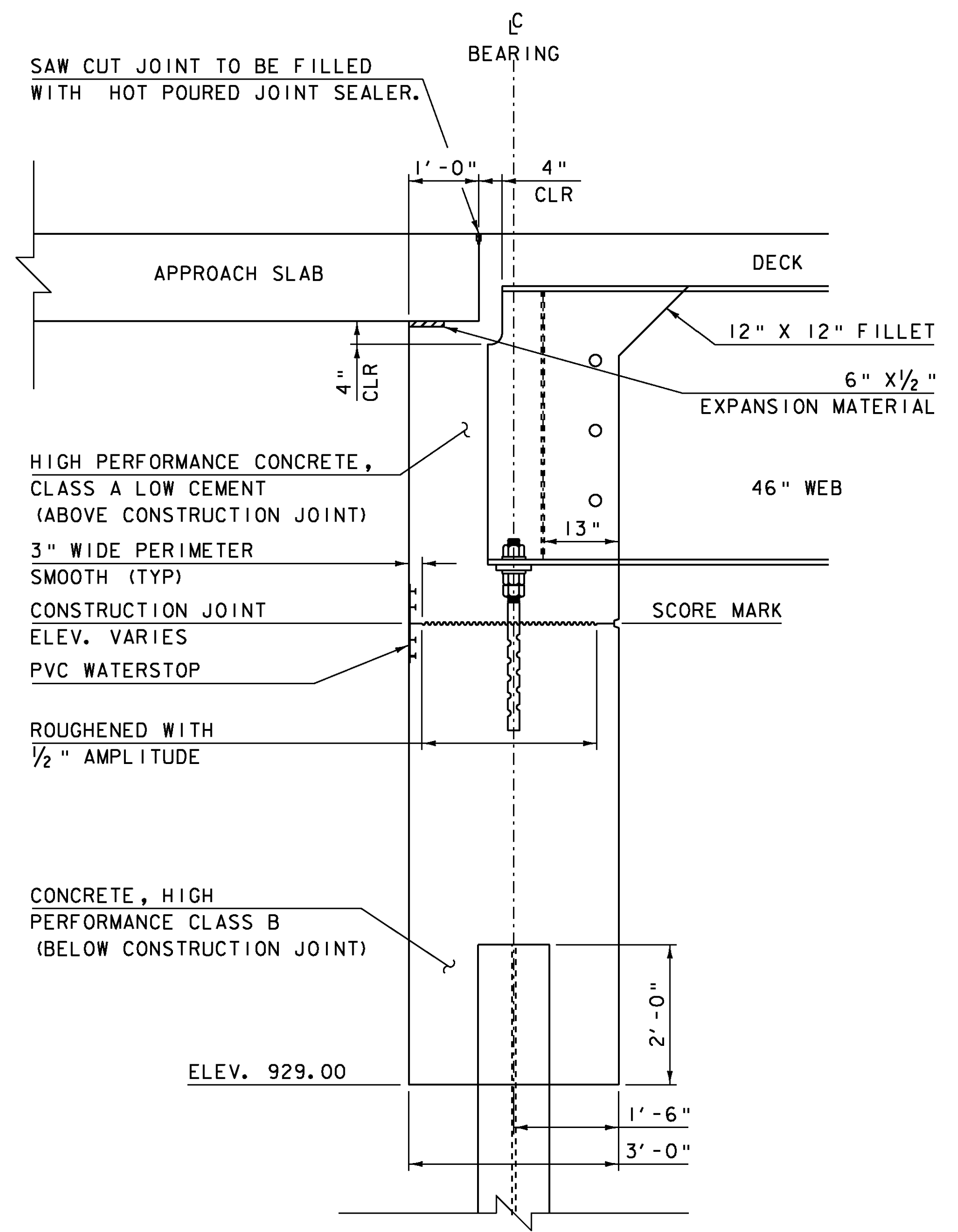
1/2" PLATE WASHER DETAIL
SCALE 1 1/2" = 1'-0"

NOTES:

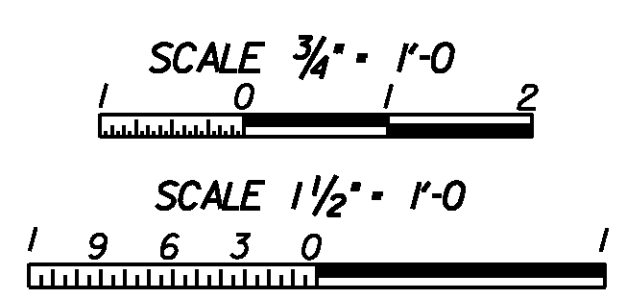
1. THE SOLE PLATES, ANCHOR BOLTS, WASHERS AND NUTS SHALL BE PAID FOR UNDER ITEM 531.14, "BEARING DEVICE ASSEMBLY, INTEGRAL ABUTMENT" AND SHALL CONFORM TO SECTION 531 OF THE STANDARD SPECIFICATIONS.
2. THE SOLE PLATES, ANCHOR BOLTS, AND WASHERS SHALL BE GALVANIZED OR METALIZED AS PER SUBSECTIONS 531.04 AND 506.15 OF THE STANDARD SPECIFICATIONS.
3. ANCHOR BOLTS SHALL BE 2" DIAMETER, TYPE 1 BOLTS MEETING ASTM A449. NUTS SHALL MEET AASHTO M291. THE CONTRACTOR SHALL ENSURE THAT THE ANCHOR BOLTS ARE INSTALLED IN A PLUMB POSITION. ONE EXTRA ANCHOR BOLT SHALL BE SUPPLIED FOR TESTING PURPOSES.
4. ALL STEEL IN BEARING DEVICE ASSEMBLY SHALL BE AASHTO M270/M270M GR 36 UNLESS OTHERWISE NOTED.
5. SUBSTITUTIONS FOR BEARING DEVICE ASSEMBLY COMPONENT MATERIALS AND SIZES SHALL BE DETAILED ON THE FABRICATION DRAWINGS. ALL SUBSTITUTIONS SHALL BE APPROVED BY THE STRUCTURES ENGINEER PRIOR TO FABRICATION AS PER SUBSECTION 506.04 OF THE STANDARD SPECIFICATIONS.



PLAN VIEW, END OF STEEL
AT ABUTMENT
SCALE 1 1/2" = 1'-0"



BRIDGE END DETAIL AND
ABUTMENT TYPICAL SECTION
SCALE 3/4" = 1'-0"



PROJECT: CHESTER	PROJECT NO.: BRF 016-1 (25)
DESIGN FILE NAME: 88b194\Structures\s88b194sub.dgn	PLOT DATE: 16-MAR-2011
IPARM FILE NAME: s88b194abut typ.i	DRAWN BY: D.D.BEARD
DESIGNED BY: E.L.RUSTAY	CHECKED BY: R.S.YOUNG
SQUAD LEADER: C.P.WILLIAMS	SHEET: 31 OF 50
BEARING DETAILS	