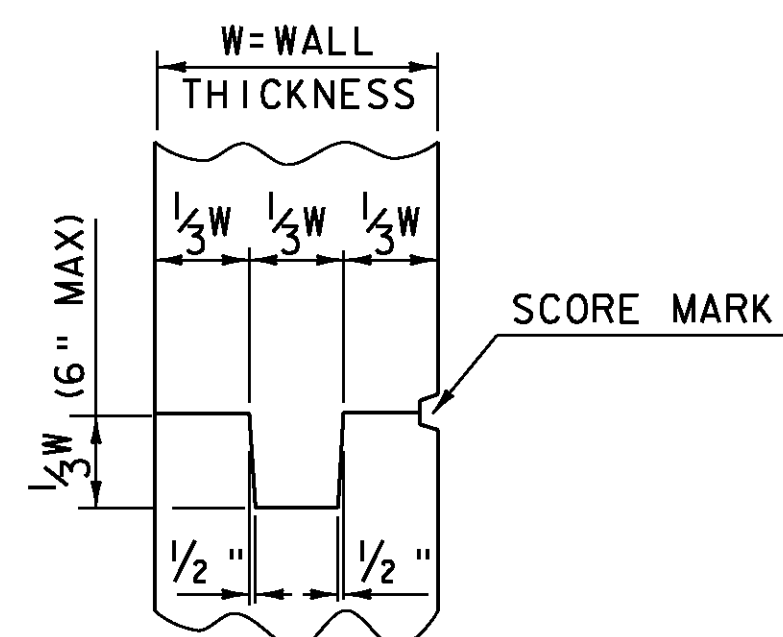


TYPICAL CHANNEL SECTION

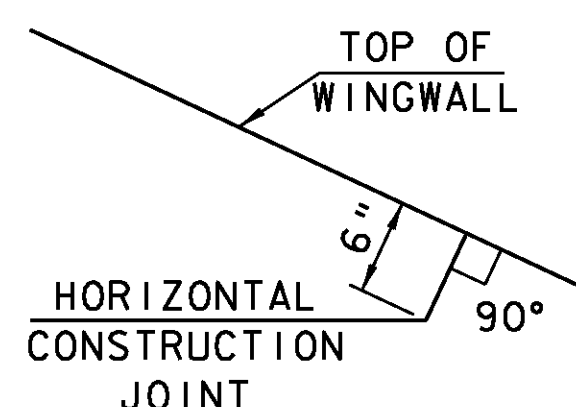
NTS

* GRUBBING MATERIAL SHALL NOT BE PLACED ON THE STONE FILL IN THE AREA UNDER THE BRIDGE. WHENEVER CHANNEL SLOPE INTERSECTS ROADWAY SUBBASE, GRUBBING MATERIAL SHALL BEGIN AT THE BOTTOM OF SUBBASE.



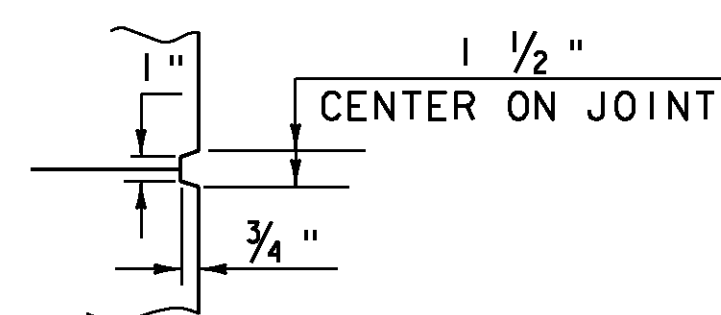
TYPICAL CONCRETE CONSTRUCTION JOINT

NTS



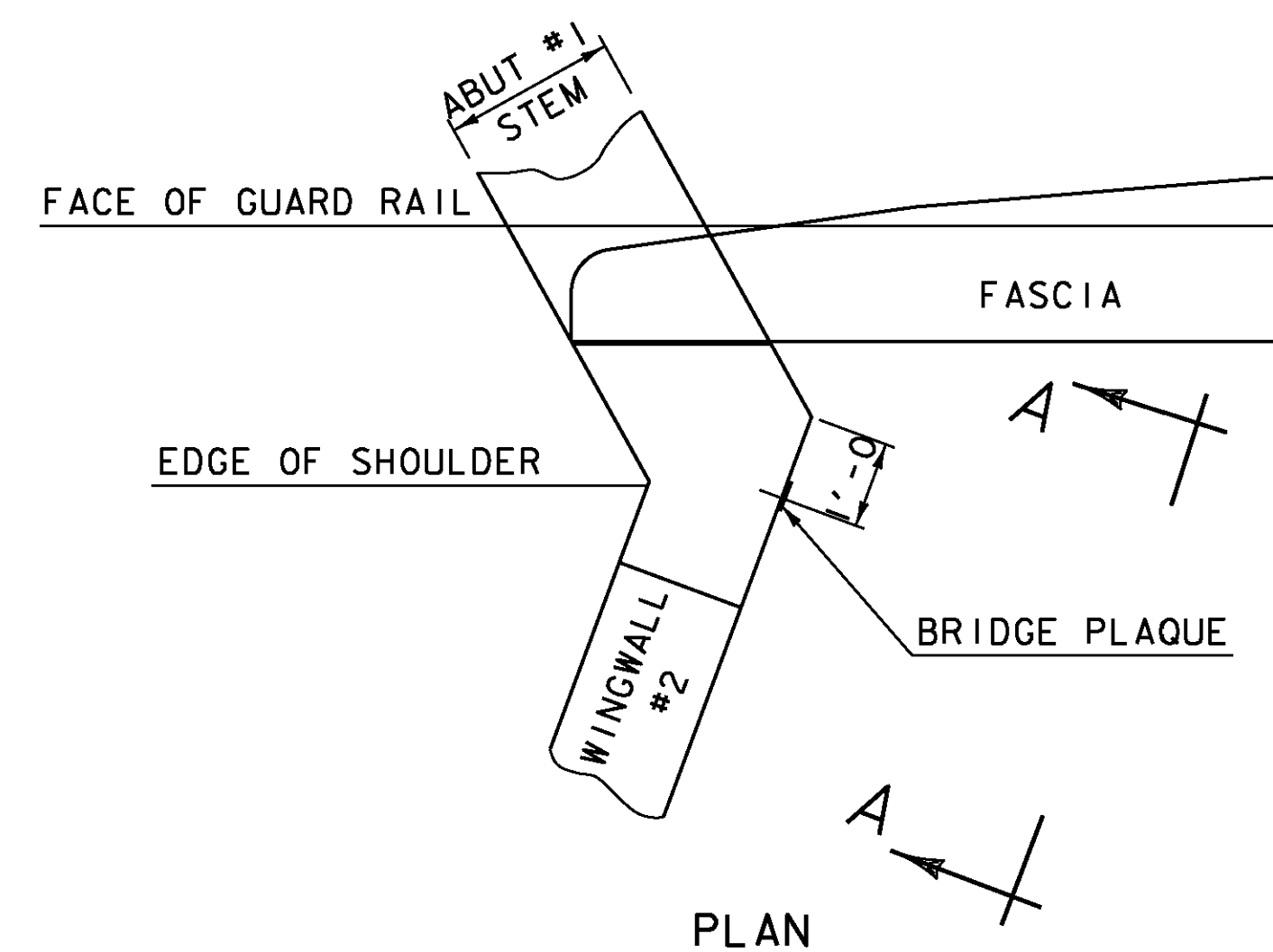
HORIZONTAL JOINT DETAIL

NTS

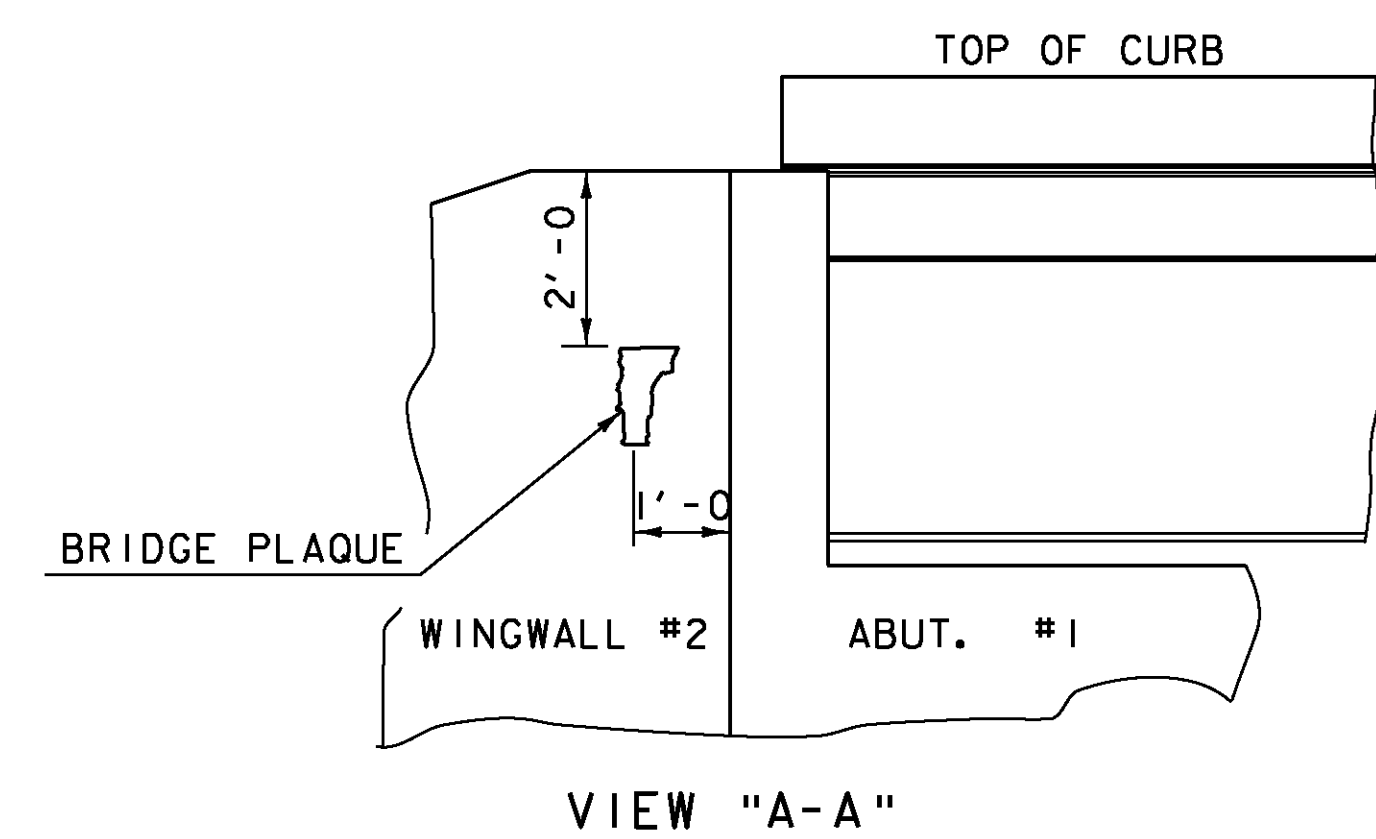


SCORE MARK DETAIL

NTS



PLAN

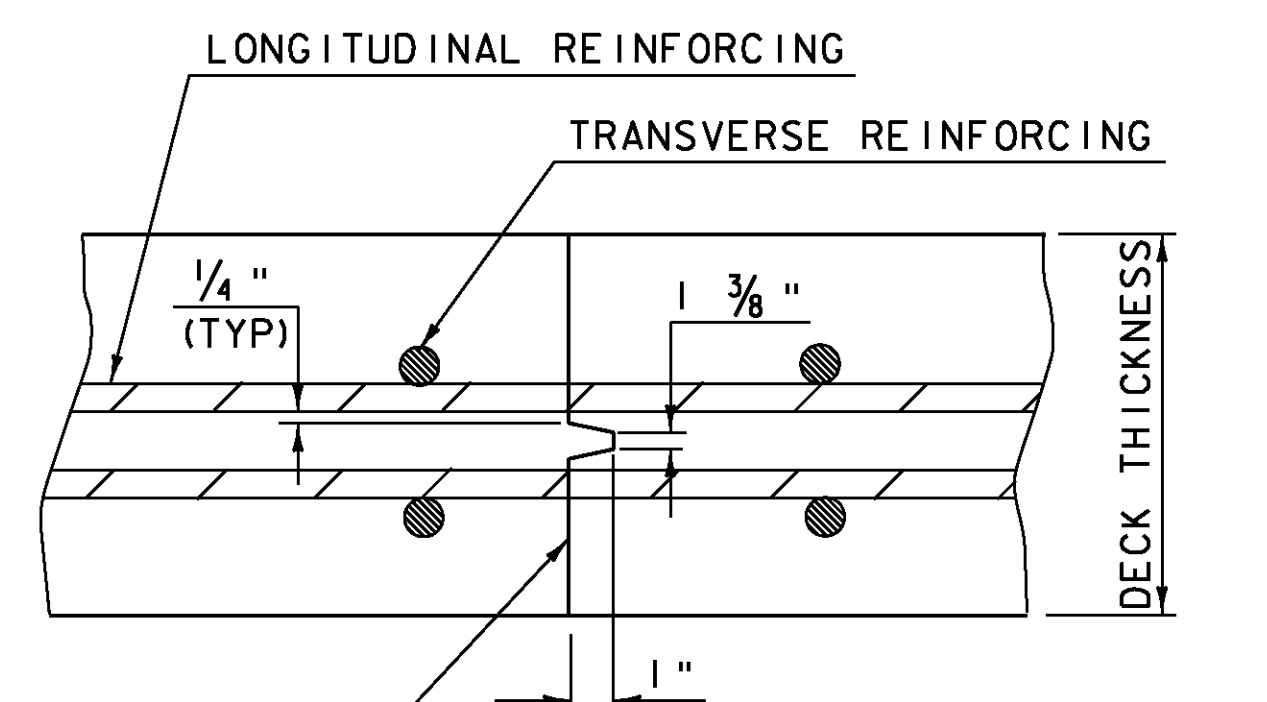


VIEW "A-A"

LOCATE BRIDGE PLAQUE

NTS

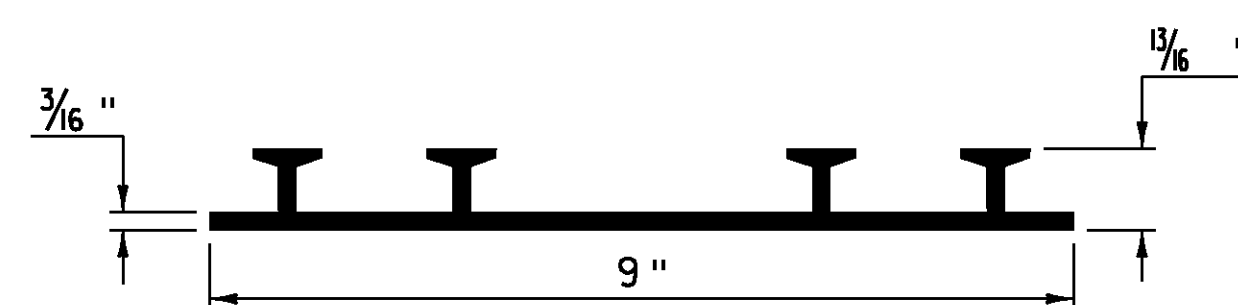
THE BRIDGE PLAQUE WILL BE SUPPLIED BY THE AGENCY OF TRANSPORTATION AND SHALL BE INSTALLED BY THE CONTRACTOR AT ABUTMENT #1 ON THE RIGHT SIDE AS SHOWN OR AS DIRECTED BY THE ENGINEER. BRIDGE PLAQUE WILL BE INCIDENTAL TO ITEM 501.34 CONCRETE, HIGH PERFORMANCE CLASS B.



TRANSVERSE BRIDGE SLAB CONSTRUCTION JOINT DETAILS

NTS

APPLY EPOXY BONDING COMPOUND BEFORE PLACING NEW CONCRETE. INCLUDE WITH COST BID FOR ITEM 501.34 CONCRETE, HIGH PERFORMANCE CLASS B.



P. V. C. WATERSTOP FOR CONSTRUCTION JOINTS

NTS

THE COSTS FOR P. V. C. WATERSTOP SHALL BE INCLUDED IN THE UNIT PRICE BID FOR ITEM 501.34 CONCRETE, HIGH PERFORMANCE CLASS B. OTHER CONFIGURATIONS MAY BE USED UPON APPROVAL OF THE STRUCTURES ENGINEER.

PROJECT:	CHESTER	PROJECT NO.:	BRF 016-1 (25)
DESIGN FILE NAME:	Projects/88b194/structures/s88b194det.dgn	DESIGNED BY:	H. I. SALLS
IPARM FILE NAME:	s88b194misc det. i	PLOT DATE:	16-MAR-2011
SQUAD LEADER:	C. P. WILLIAMS	DRAWN BY:	H. I. SALLS
MISCELLANEOUS DETAILS		CHECKED BY:	R. S. YOUNG
		SHEET:	20 OF 50