

GPS CONTROL POINTS

HVCTRL #1

SKEET AZ MK  
 NORTH = 276537.75  
 EAST = 1593882.13  
 ELEV. = 926.44

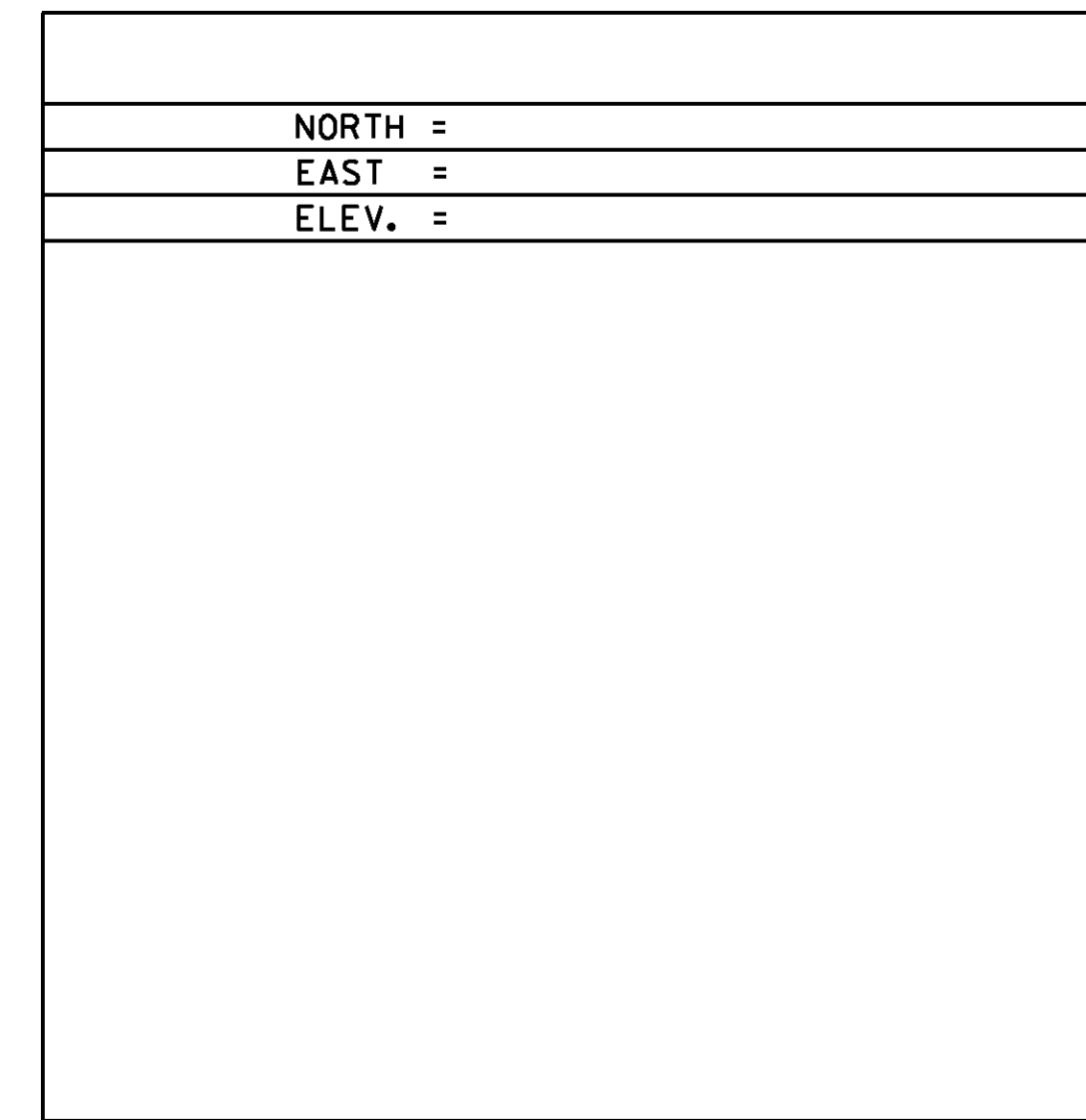
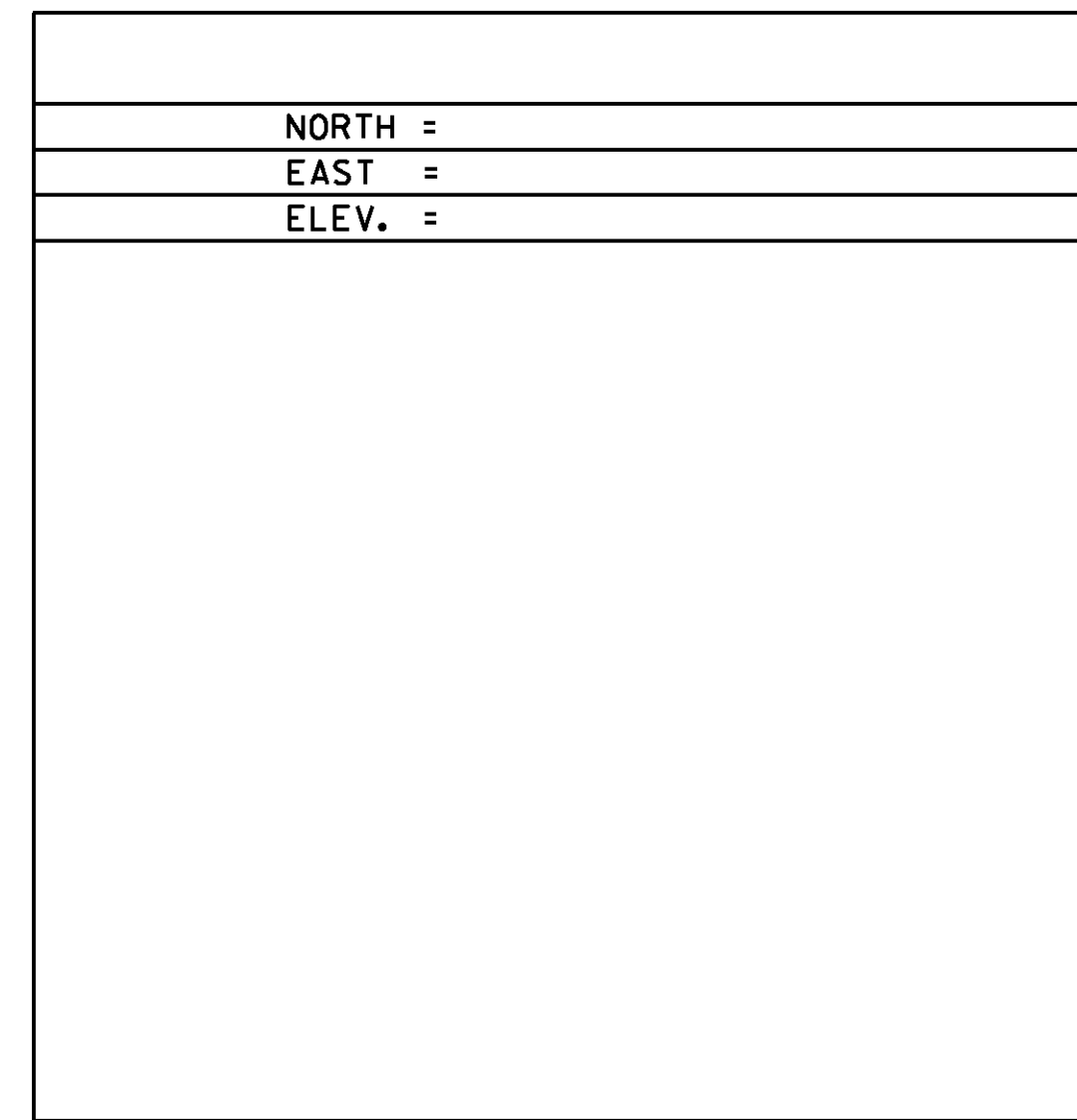
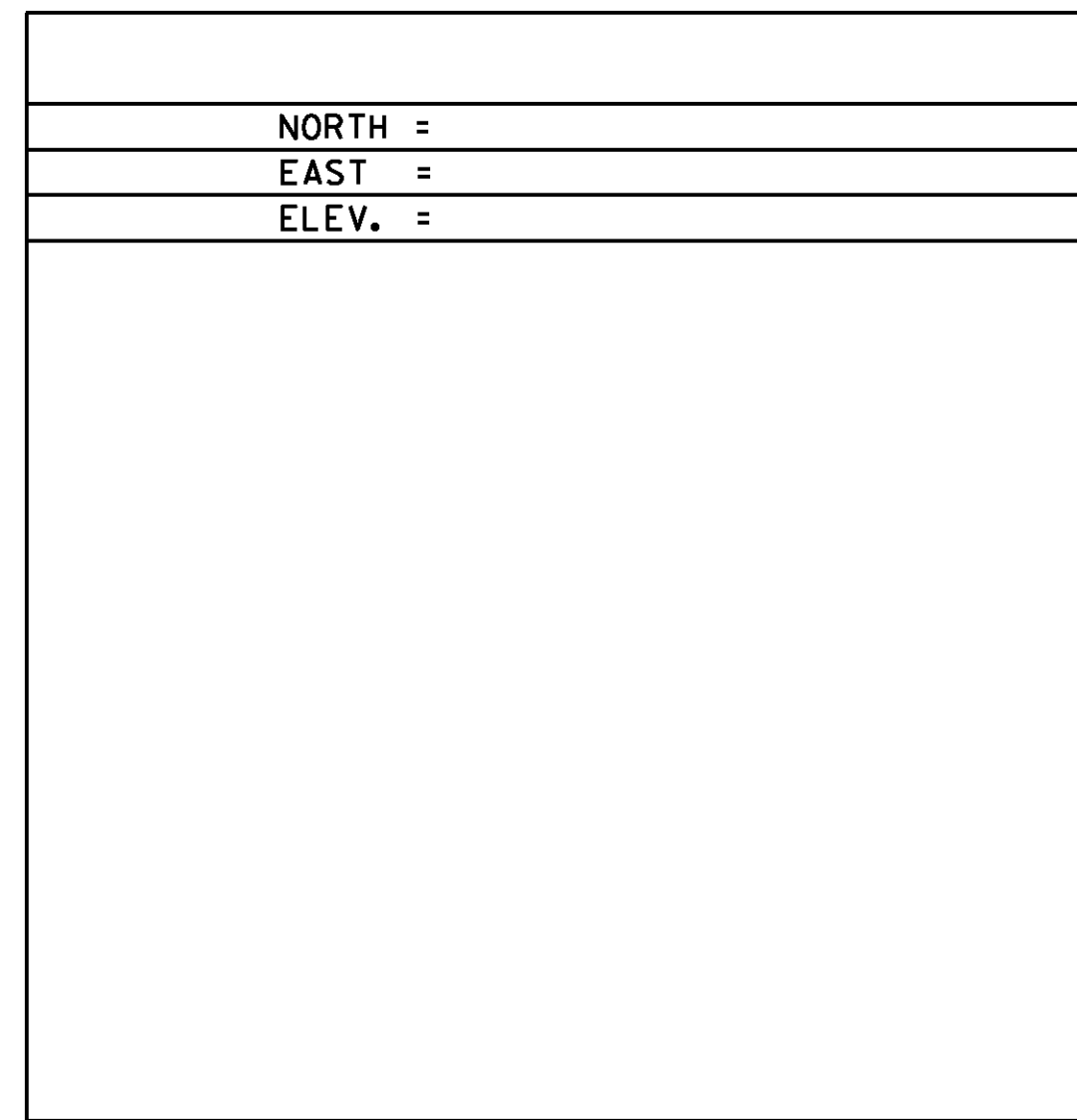
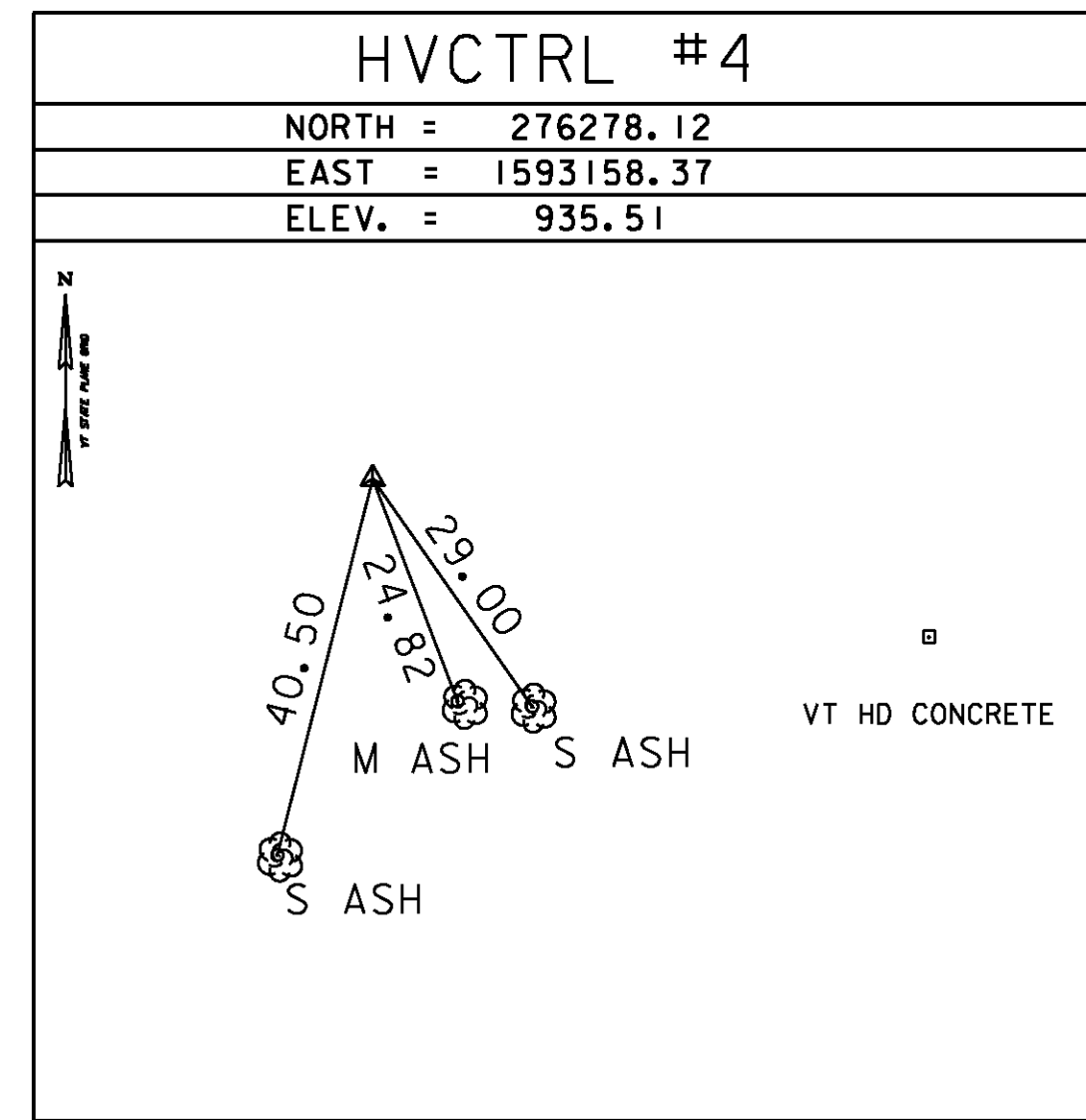
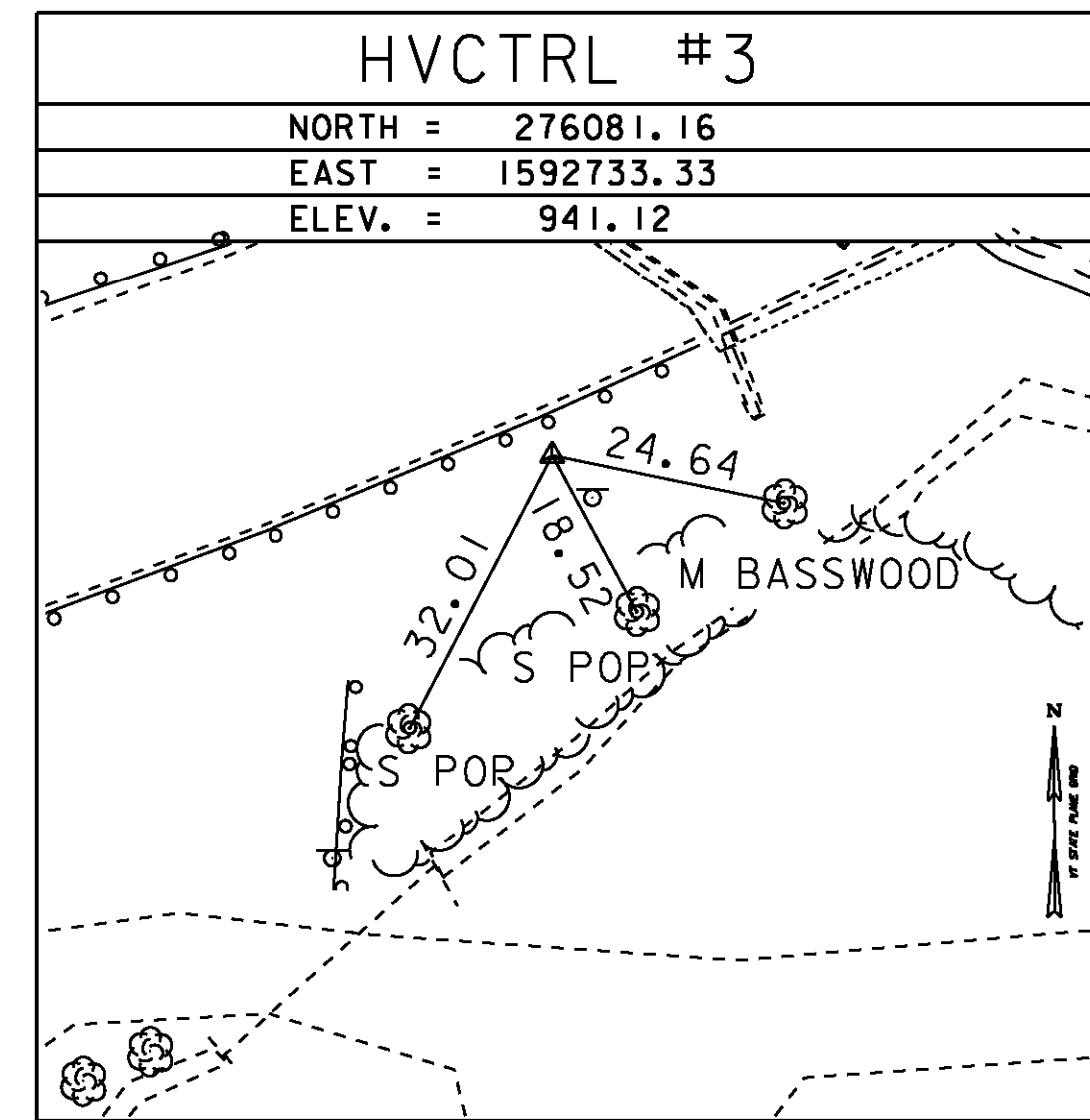
GENERAL LOCATION, CHESTER VT. TO REACH FROM THE INTERSECTION OF VT ROUTE 35 (GRAFTON ROAD) VT ROUTE 11 (MAIN STREET) AND VT ROUTE 103 (DEPOT STREET) GO WEST ALONG VT ROUTE 11 FOR 4.6 MILES TO THE BROOKSIDE USED FURNITURE BUILDING ON THE LEFT AND THE SITE OF THE MARK ON THE LEFT, JUST EAST OF THE BUILDING. THE MARK IS SET 10 CM BELOW GROUND SURFACE IN THE TOP OF A 30 CM DIAMETER CONCRETE MONUMENT. IT IS 6.8 M SOUTH SOUTHEAST OF AND ABOUT 0.5 M LOWER THAN THE CENTERLINE OF VT ROUTE 11 24.7 M EAST NORTHEAST OF THE NORTHEAST CORNER OF THE STORE 17.1 M EAST OF POLE # 1/167/2/162, 13.1 M NORTH OF THE CENTER OF THE SOUTH (OUTLET) END OF A 45 CM DIAMETER CULVERT WITH METAL DELINEATOR POST AND 21.6 M WEST OF POLE # 1/166/161 AND A FIBERGLASS WITNESS POST

HVCTRL #2

SKEET  
 NORTH = 275996.08  
 EAST = 1592376.65  
 ELEV. = 942.19

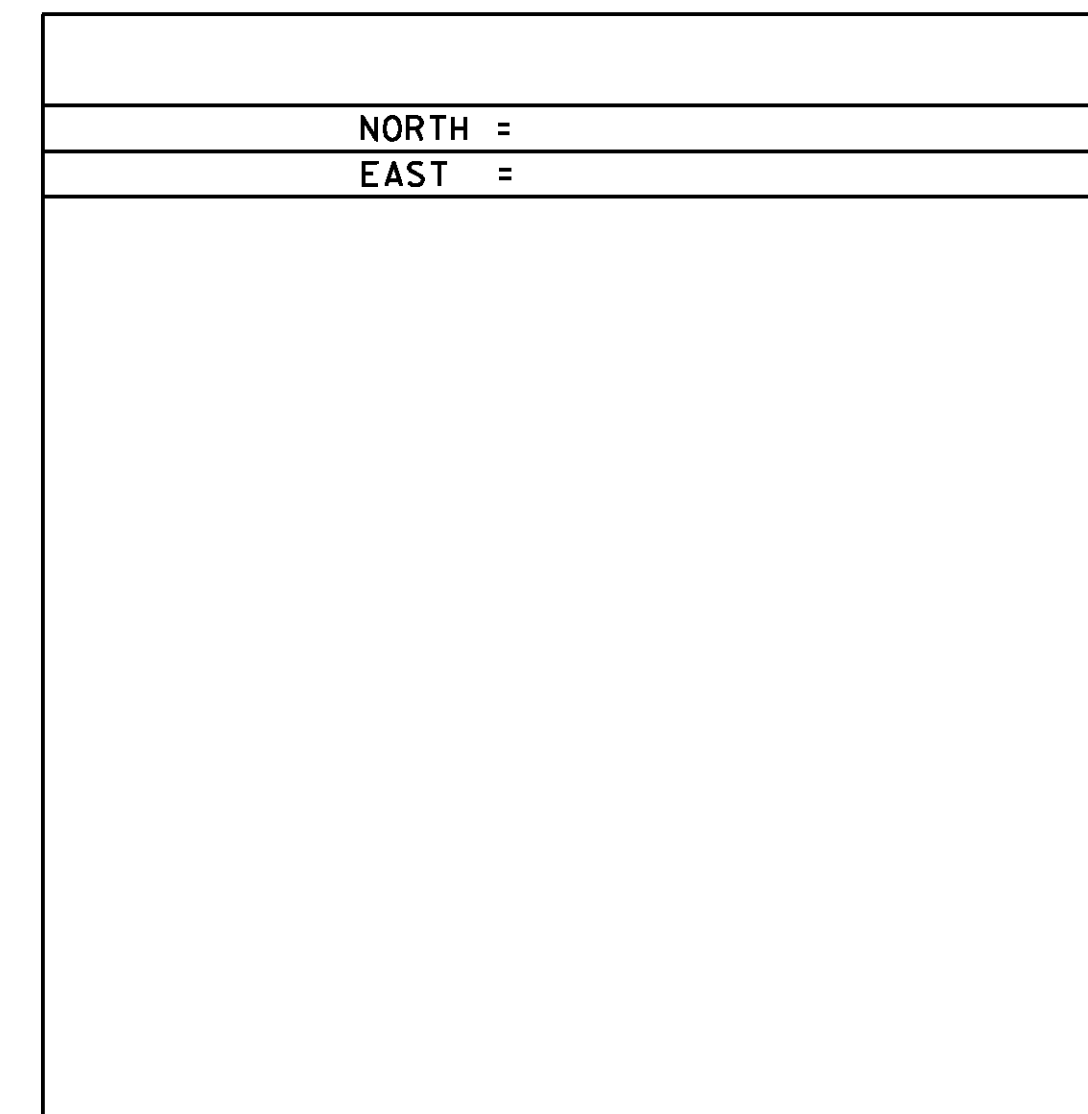
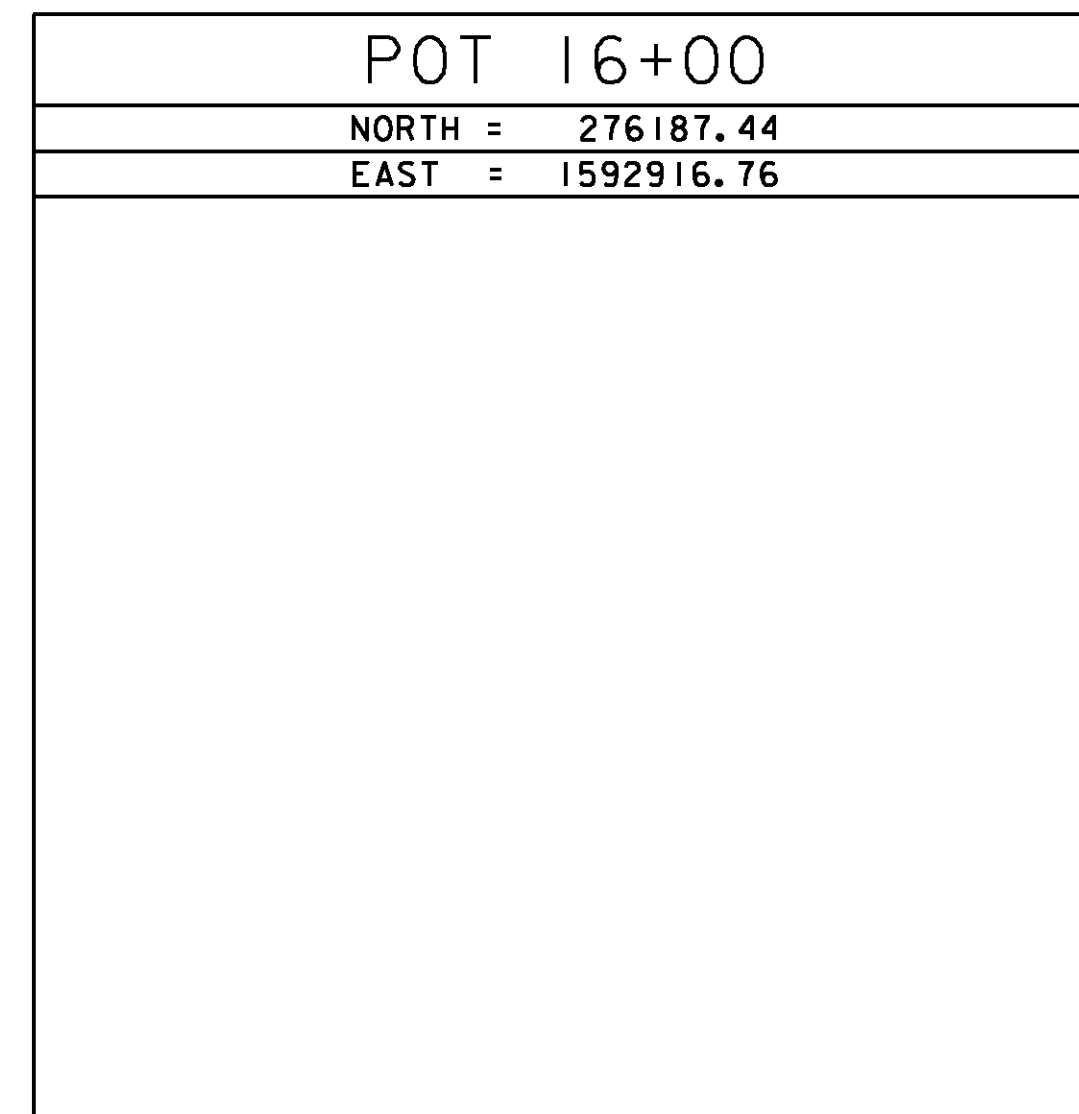
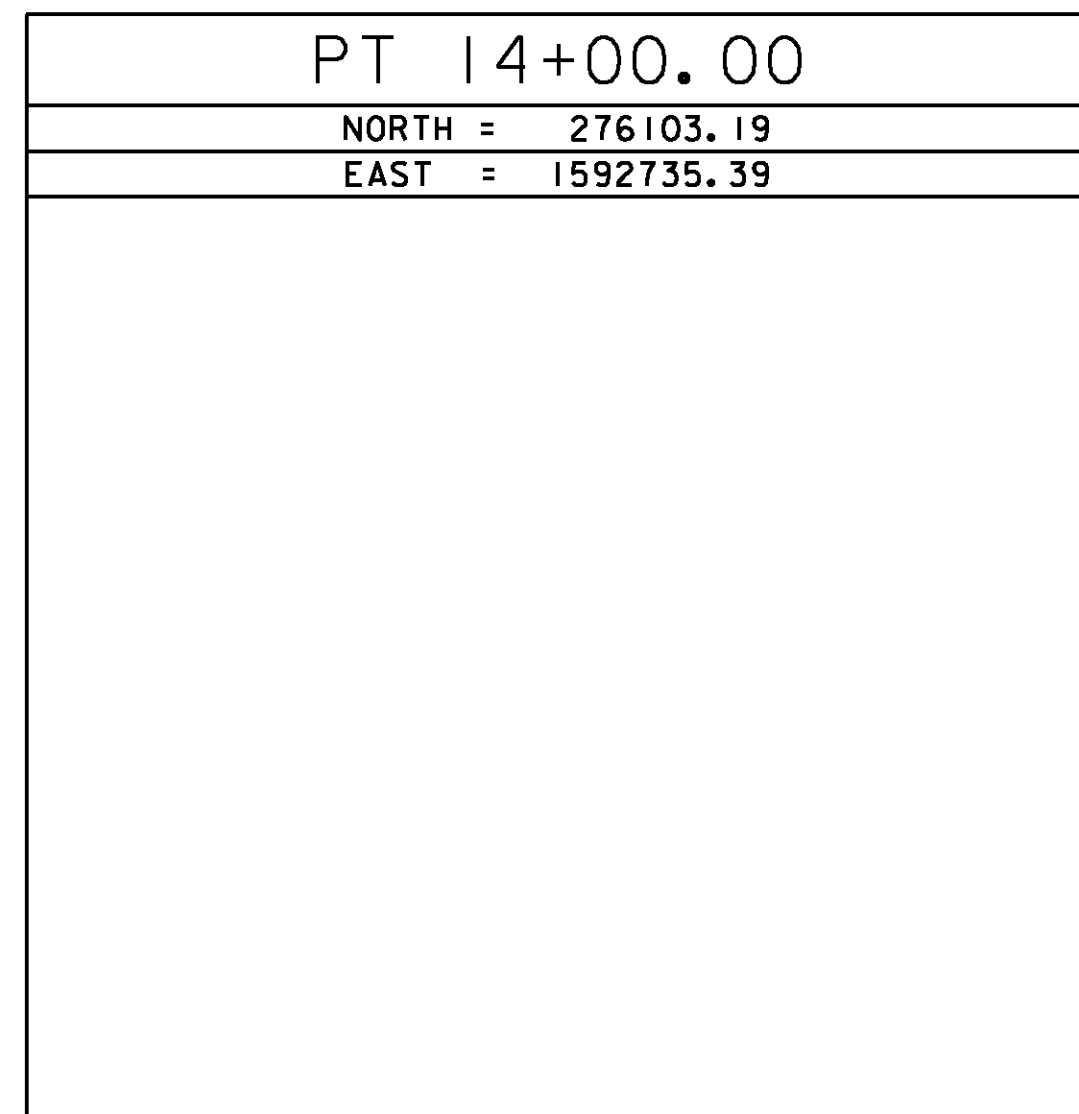
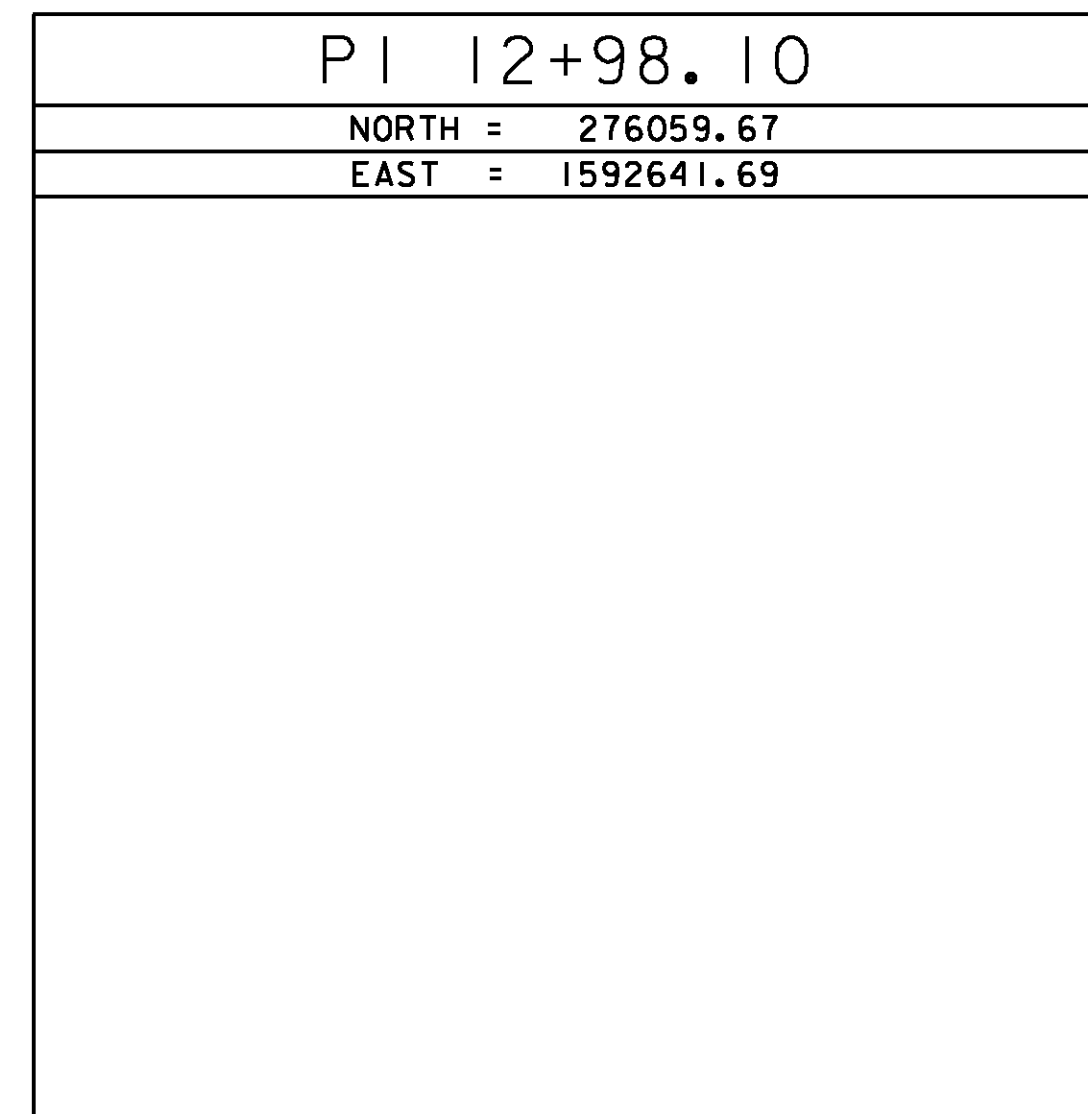
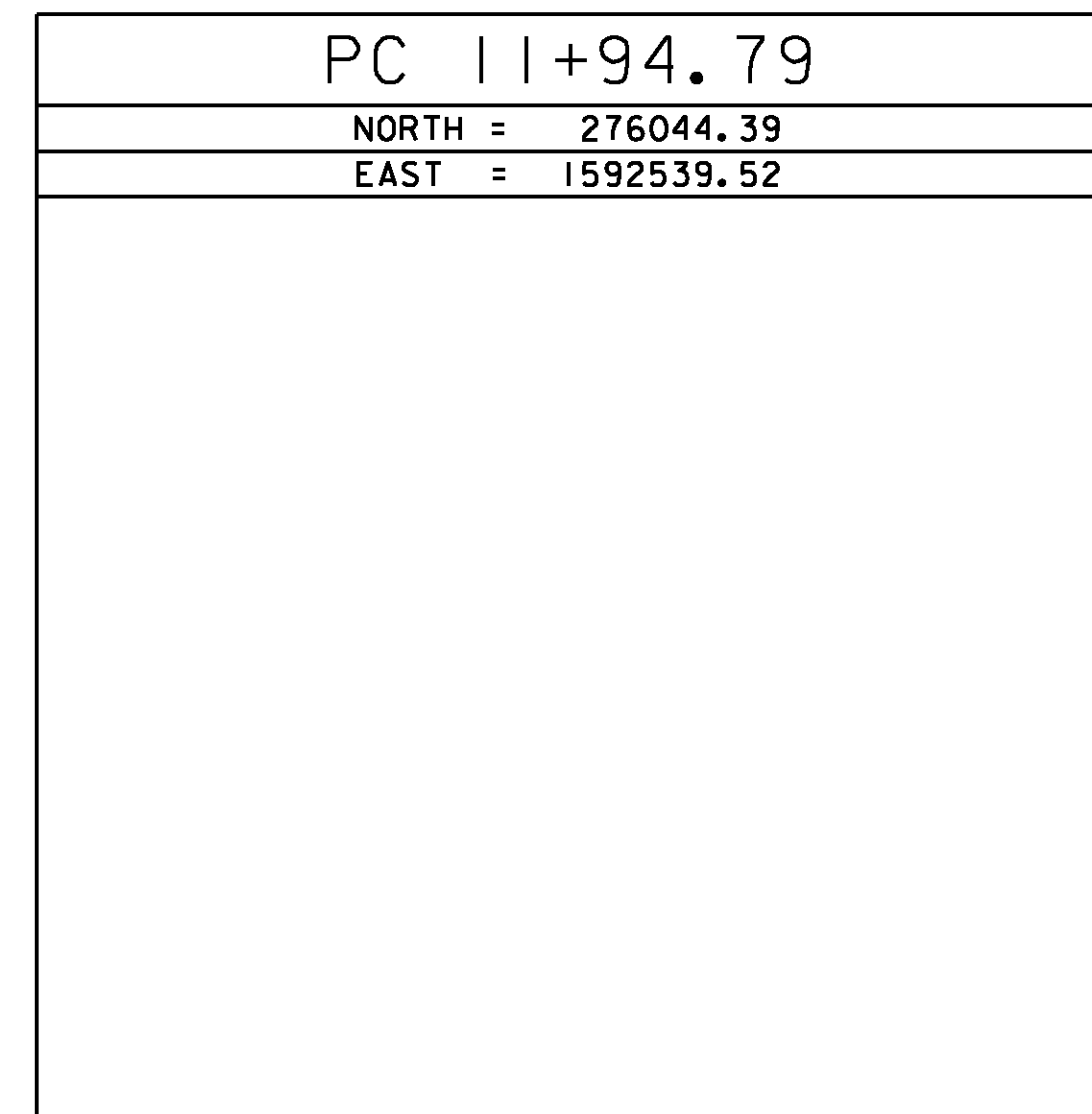
GENERAL LOCATION, CHESTER VT. TO REACH FROM THE INTERSECTION OF VT ROUTE 35 (GRAFTON ROAD), VT ROUTE 11 (MAIN STREET) AND VT ROUTE 103 (DEPOT STREET) GO WEST ALONG VT ROUTE 11 FOR 4.9 MILES TO THE SITE OF THE MARK ON THE LEFT, JUST WEST OF THE GRAVEL DRIVE ENTRANCE TO THE CHESTER ROAD AND GUN CLUB AND OPPOSITE A LARGE GRAVEL PULLOUT. THE MARK IS SET 2 CM BELOW GROUND SURFACE IN THE TOP OF A 30 CM DIAMETER CONCRETE MONUMENT. IT IS 7.4 M SOUTH OF AND ABOUT 0.5 M LOWER THAN THE CENTERLINE OF VT ROUTE 11, 35.6 M EAST OF POLE # 178/2/170, 29.3 M WEST NORTHWEST OF THE MOST NORTHERLY OF TWO POSTS FOR THE ROD AND GUN CLUB SIGN, 41.4 M WEST NORTHWEST OF POLE # 174A, AND 1.1 M NORTH OF A FIBERGLASS WITNESS POST.

TRAVERSE TIES



\* Main Traverse Completed 5/25/06 by R. Gilman P.C. & P. Winters

ALIGNMENT TIES



DATUM	
VERTICAL	NAVD 88
HORIZONTAL	NAD 83 (96)
ADJUSTMENT	Compass

PROJECT NAME:	Chester	PLOT DATE:	16-MAR-2011
PROJECT NUMBER:	BRF 016-1(25)	DRAWN BY:	R. Bullock
FILE NAME:	88b194\survey\88b194+1.dgn	DESIGNED BY:	E. L. RUSTAY
PROJECT LEADER:	C. P. WILLIAMS	CHECKED BY:	R. S. YOUNG
TIE SHEET		SHEET	6 OF 50