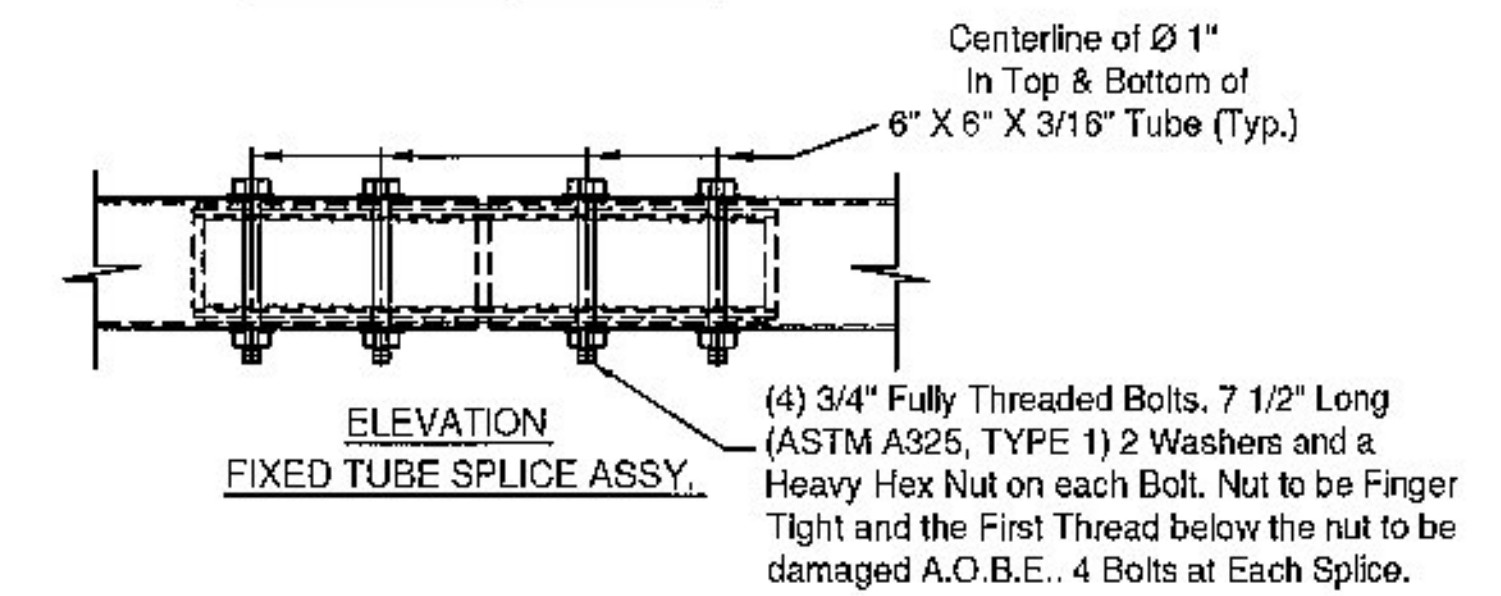
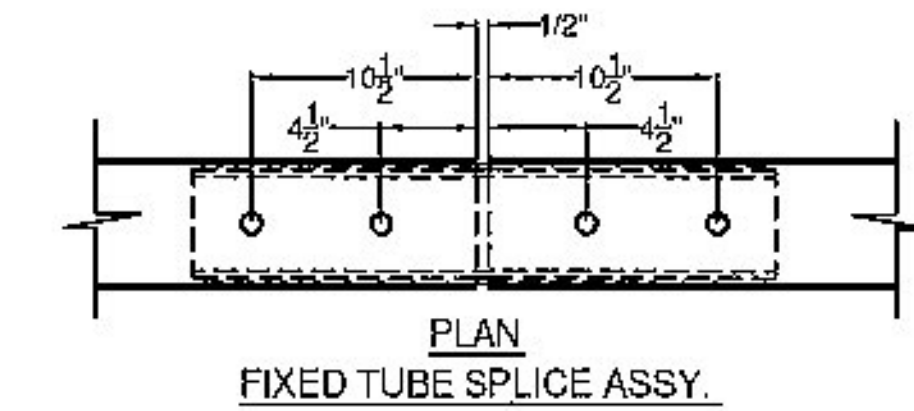
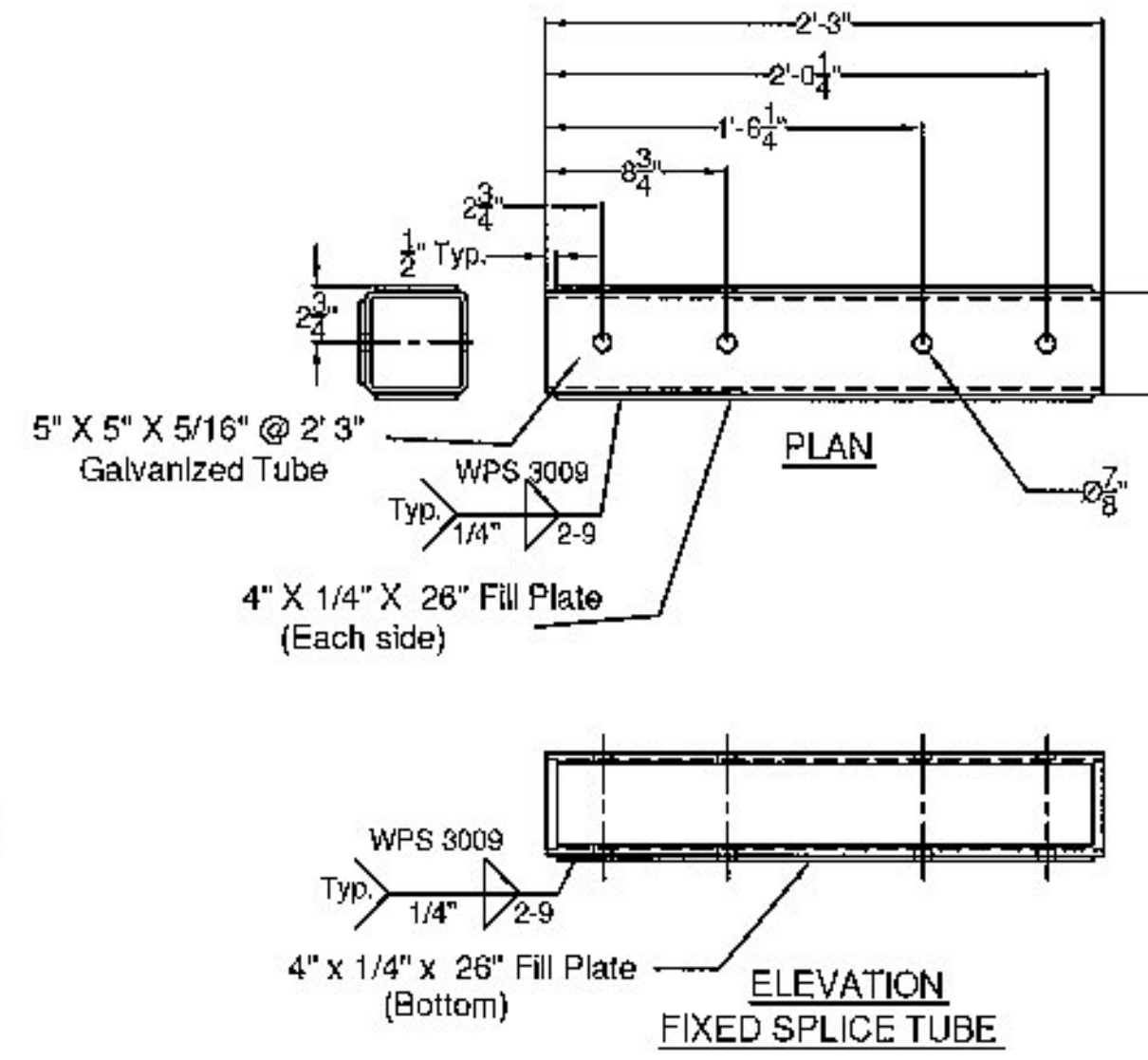
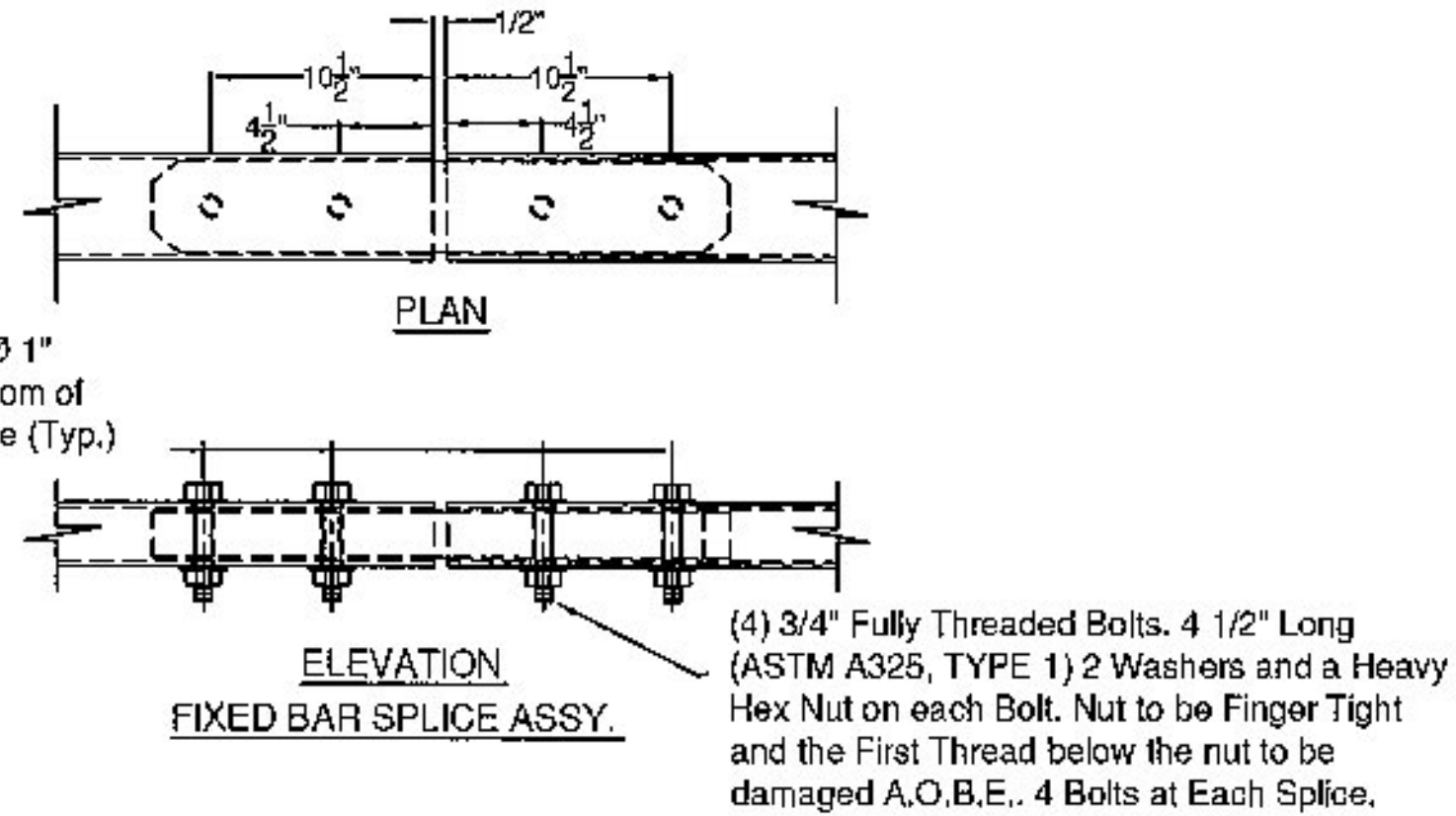
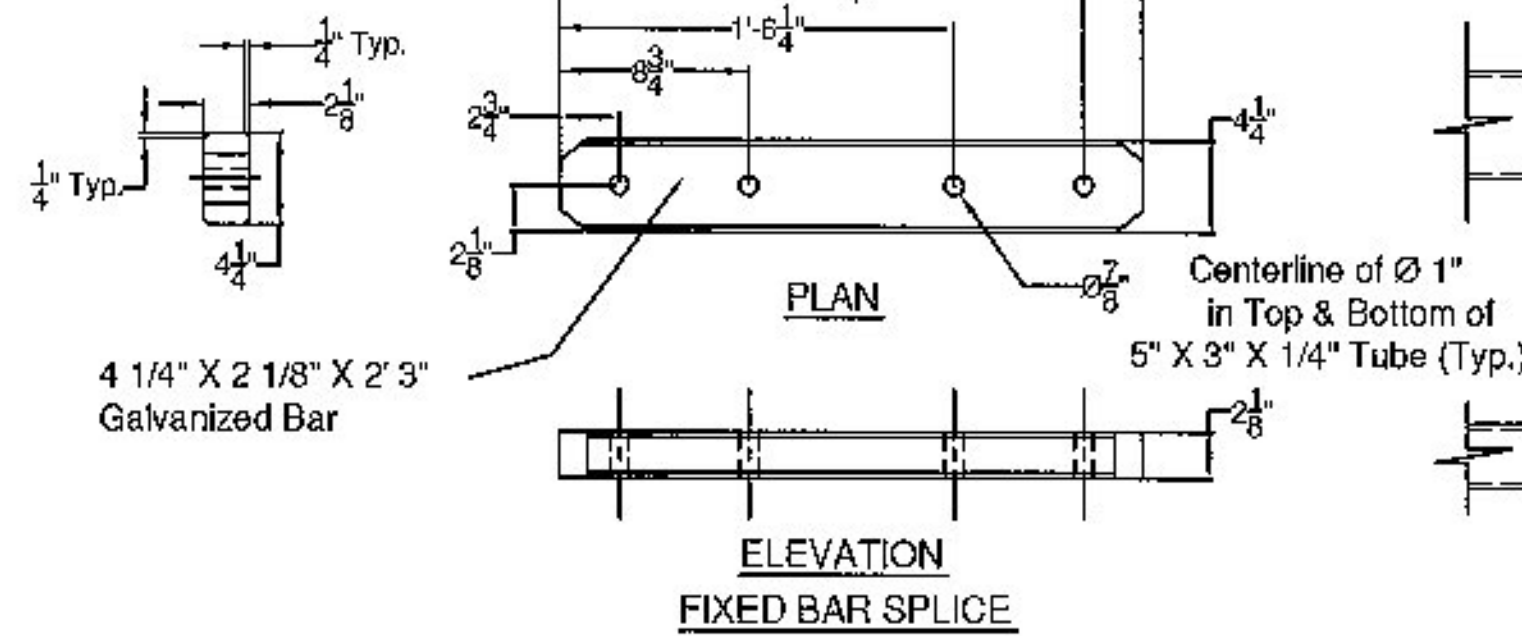


**SPLICE BAR - FIXED**



**SPLICE TUBE - FIXED**

Vermont Agency of Transportation

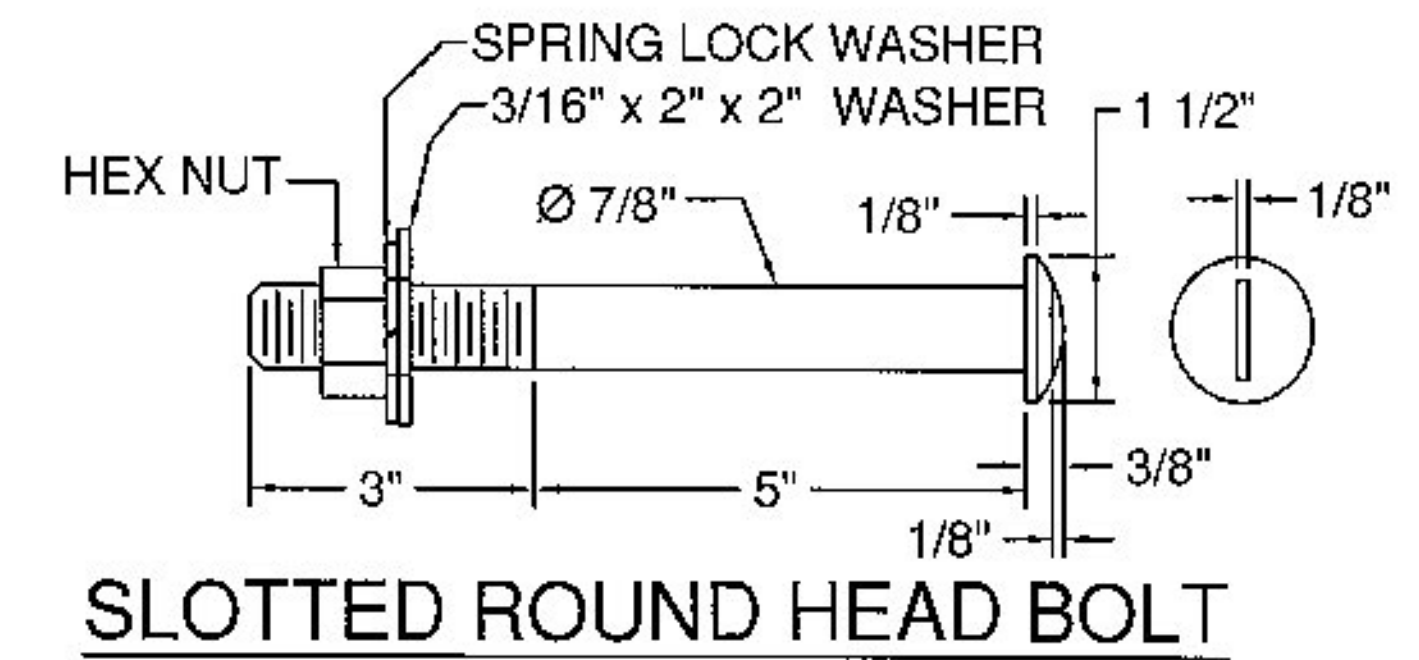
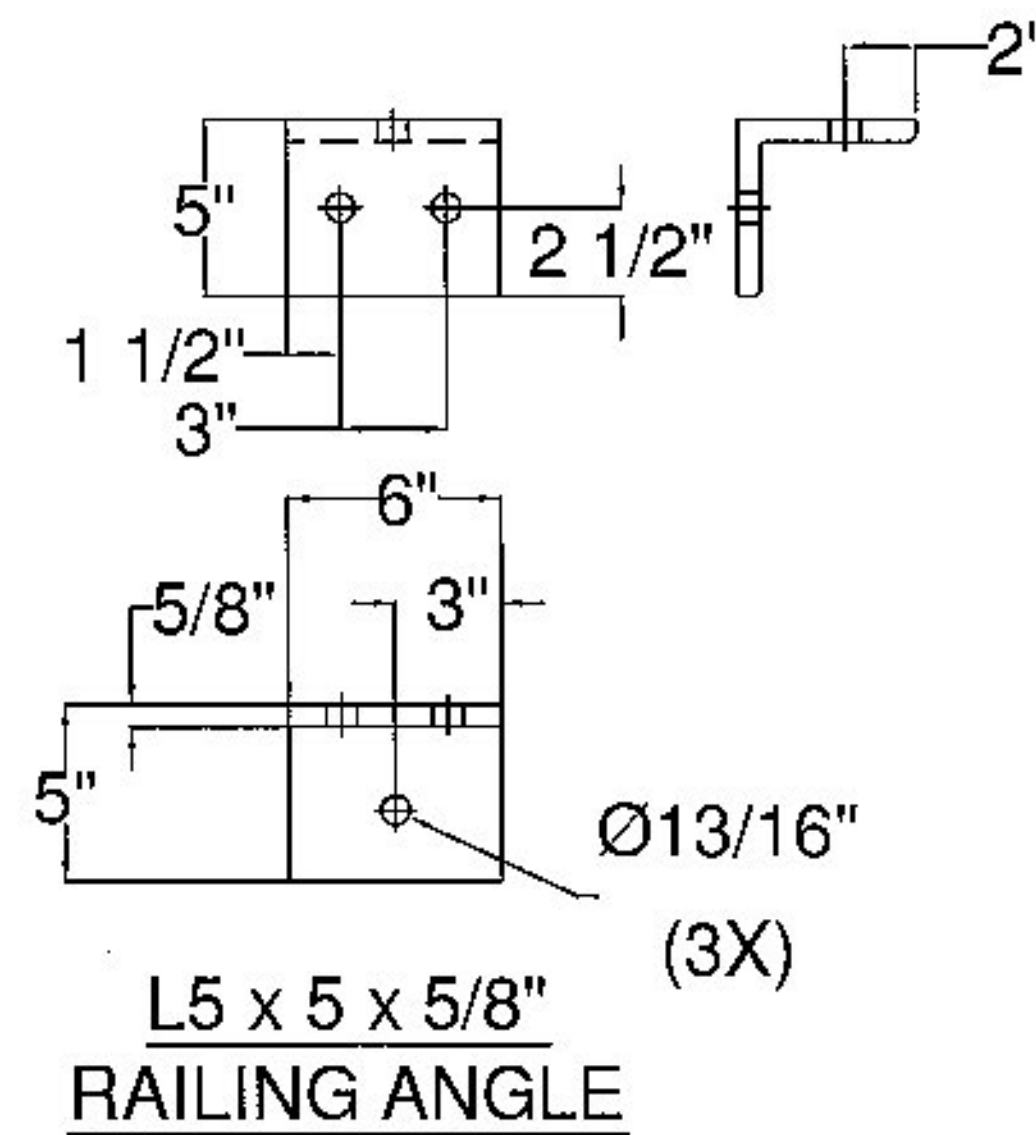
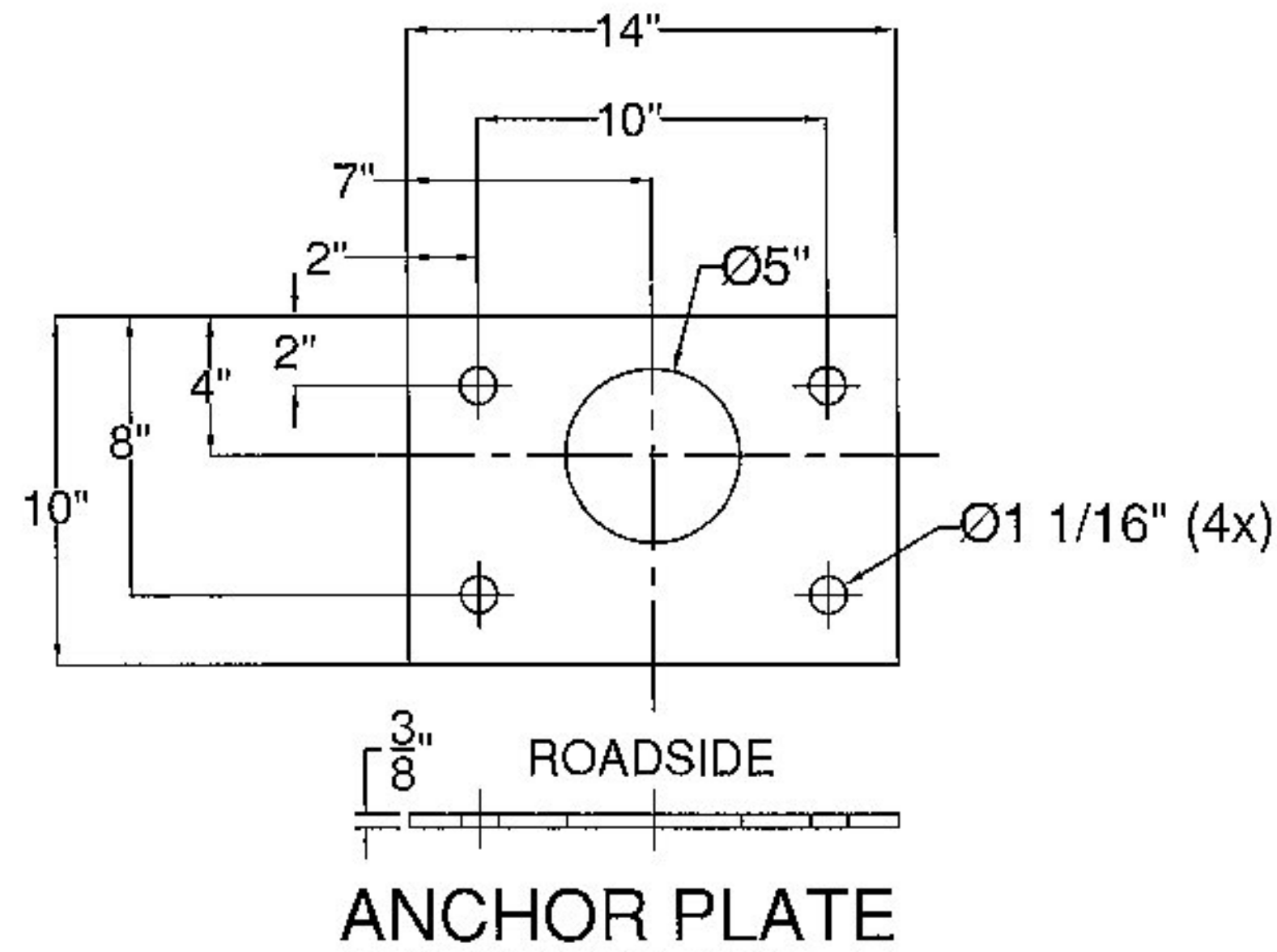
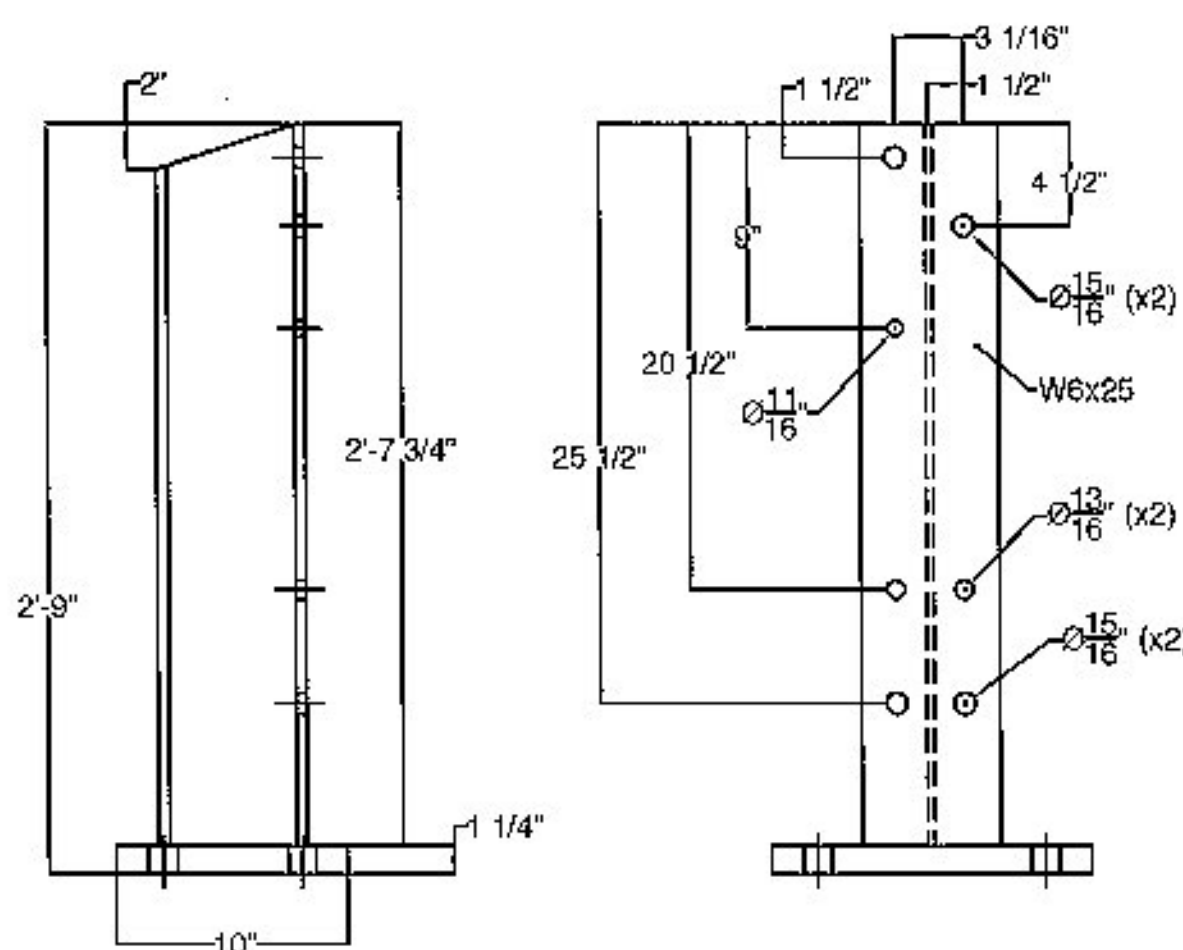
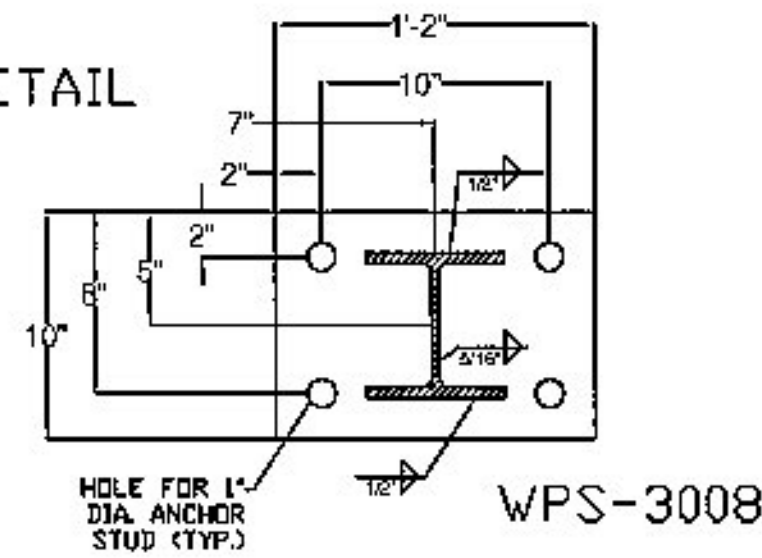
**RECEIVED**

CK'D BY CLB OK'D BY HIS

January 7, 2015

RESUBMIT NO Approved  
BY C. CARLSON DATE 01/07/15

**BRIDGE POST DETAIL**



ITEM #: 525.335

SHEET 2 OF 2

STRUCTURAL STEEL TO COMPLY W/ ASTM A6

**BRIDGE RAIL DETAILS SHEET**

JOHNSON, VT ROUTE 15 (MINOR ARTERIAL) BRIDGE #32  
TOWN OF JOHNSON, COUNTY OF LAMOILLE, VT.

TOLERANCE UNLESS OTHERWISE NOTED:  
FRACTIONS = ± 1/16"  
ANGLES = ± 1/2"  
DIAMETERS = ± 1/32"

R NO.	DATE	DESCRIPTION	BY	R NO.	DATE	DESCRIPTION	BY
E 1	12/23/14	REVISED PER 12/22/14 MARK-UP	E.P.				
V			V				

DRAWN	E.P.	11/11/14
CHECKED	D.L.	11/18/14
APPROVED		
SCALE	SCHEMATIC	
DRAWING NO. P.R. LAFAYETTE-JOHNSON		



**ELDERLEE, INC.**  
OAKS CORNERS, NEW YORK 14512  
E-Mail: [dlong@elderlee.com](mailto:dlong@elderlee.com), [epcek@elderlee.com](mailto:epcek@elderlee.com)  
Tel: 315-789-6670 Fax: 315-789-6615

