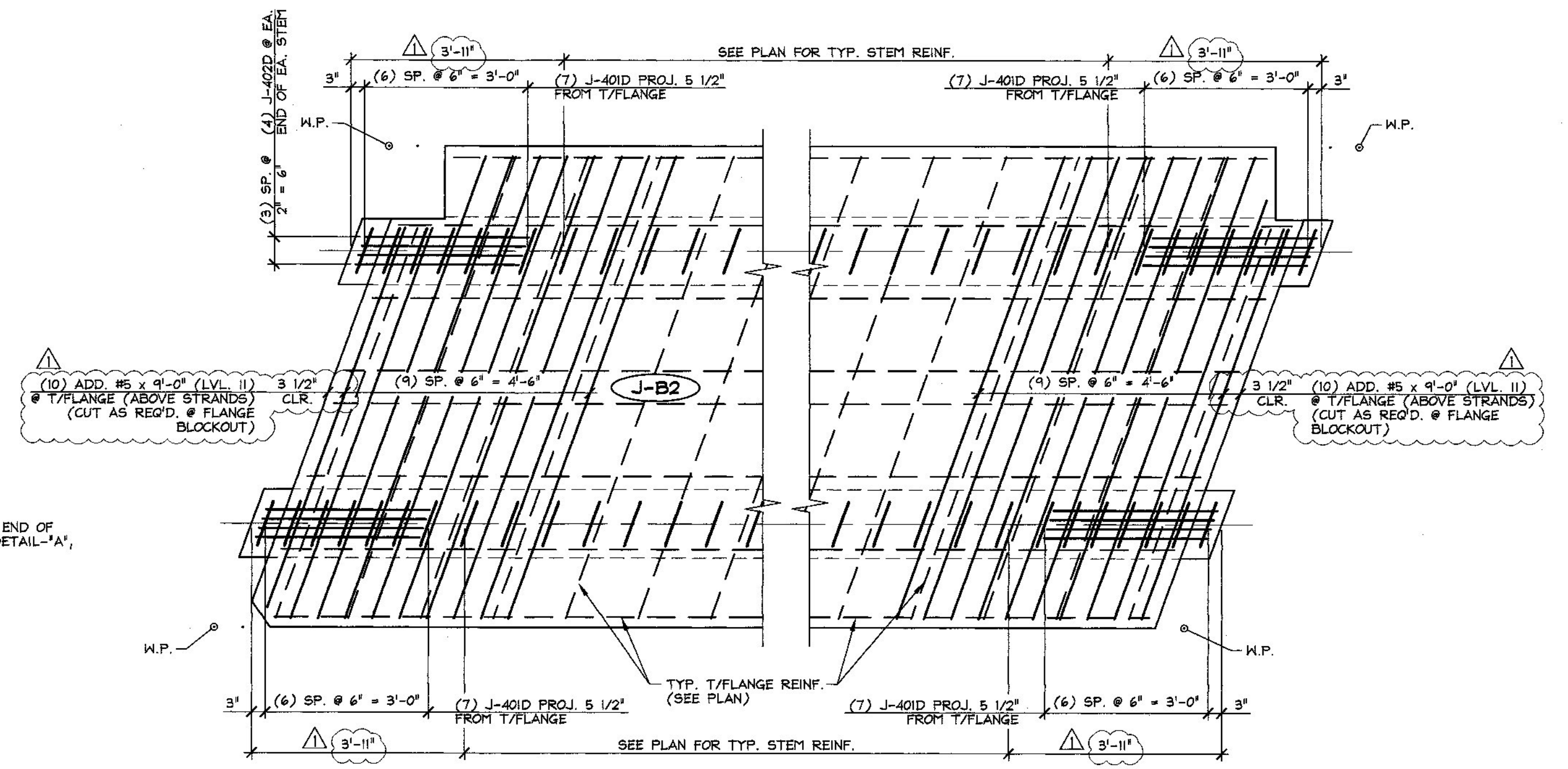
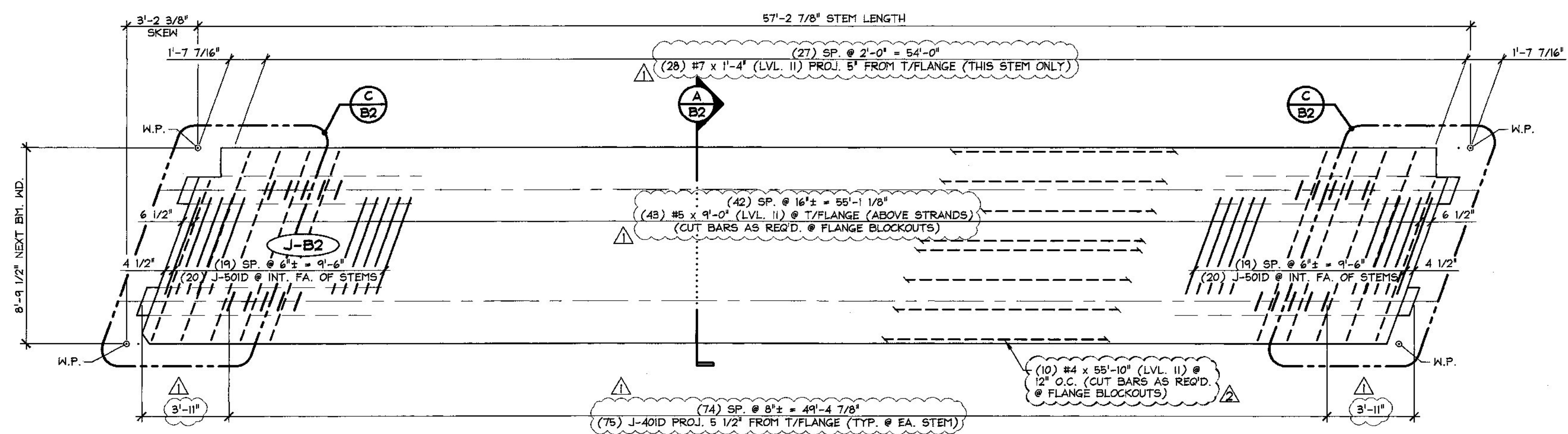


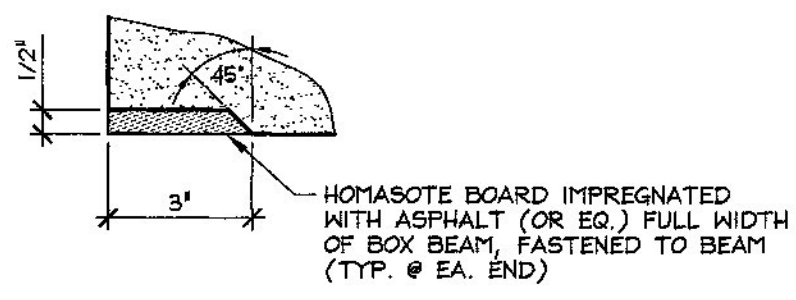
1 DIMENSIONAL NEXT BEAM PLAN VIEW IN FORM
B2
1/4\"/>



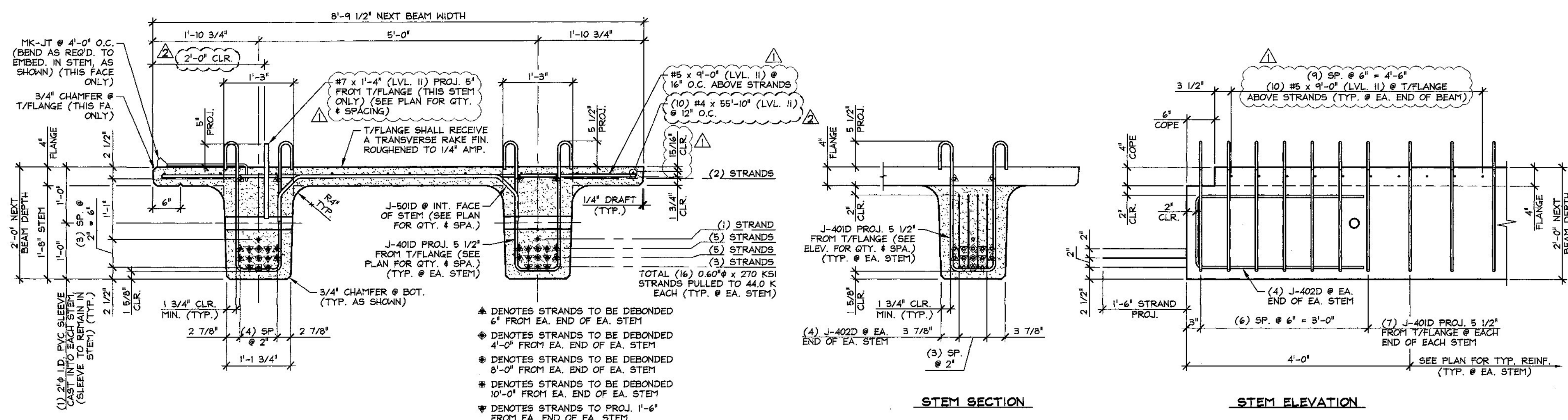
C END BLOCK REINFORCING PLAN
B2
1/2\"/>



2 REINFORCING NEXT BEAM PLAN VIEW IN FORM
B2
1/4\"/>

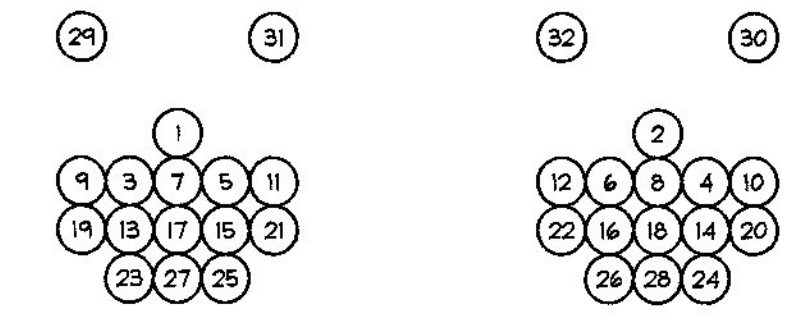


DETAIL - "A"
3\"/>



A DIMENSIONAL & REINFORCING SECTION
B2
3/4\"/>

B END BLOCK STEM REINFORCING DETAILS
B2
3/4\"/>



DETENSING SCHEDULE
N.T.S.

△ 11-19-14 REVISED AS NOTED
△ 11-5-14 REVISED AS NOTED

Vermont Agency of Transportation
RECEIVED
CK'D BY CLB OK'D BY HIS
November 20, 2014
RESUBMIT NO Approved
BY C. CARLSON DATE 11/21/14

MARK	J-B2	QTY.	2	WT.	29.75 T	VOL.	14.69 cy
MATERIAL LIST / NEXT BEAM							
ITEM	MARK	DESCRIPTION	QTY.				
1	J-401D	#4 BENT BAR (LEVEL II, DUAL COATED)	176				
2	J-402D	#4 BENT BAR (LEVEL II, DUAL COATED)	16				
3		#4 x 55'-10\"/>	10				
4							
5	J-501D	#5 BENT BAR (LEVEL II, DUAL COATED)	40				
6		#5 x 9'-0\"/>	63				
7							
8		#7 x 1'-4\"/>	26				
9							
10							
11							
12	MK-J	MODIFIED DAYTON SUPERIOR C-24 45' TYPE 4-APR HANGER (GALV.)	14				
13	MK-J2	SHARD-RAIL ANCHOR 3/8\"/>	6				
14		SET OF (3) 0.60\"/>	4				
15							

APPROVAL STAMP:

J.P. CARRARA & SONS INC.
Precast & Prestress Manufacturer
2464 CASE ST., MIDDLEBURY, VERMONT 05753 Phone: (802)388-6361 Fax: (802)388-9010

A.L. St. ONGE
CONTRACTOR
MONTMERY, VERMONT

STATE OF VERMONT AGENCY OF TRANSPORTATION
COUNTY OF LAMOILLE

CITY OF JOHNSON
ROUTE NO.: VT 15 (MINOR ARTERIAL)
BRIDGE NO.: 32 PROJECT NO.: BRP 030-2(26)

DATE: SEPT. 30, 2014
SCALE: NOTED
CHKD: - DFTM: B.L.
JOB NO: 23442-014
DWG. NO: B2

PRESTRESSED NEXT BEAM DETAILS