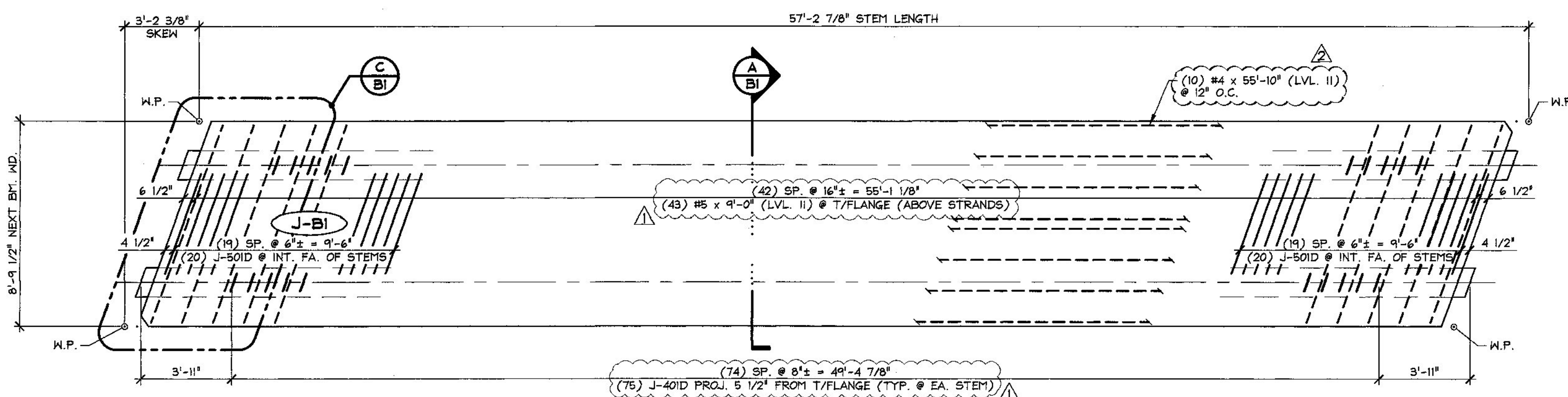
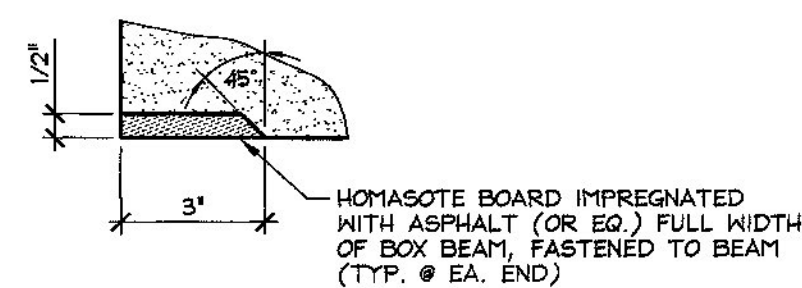


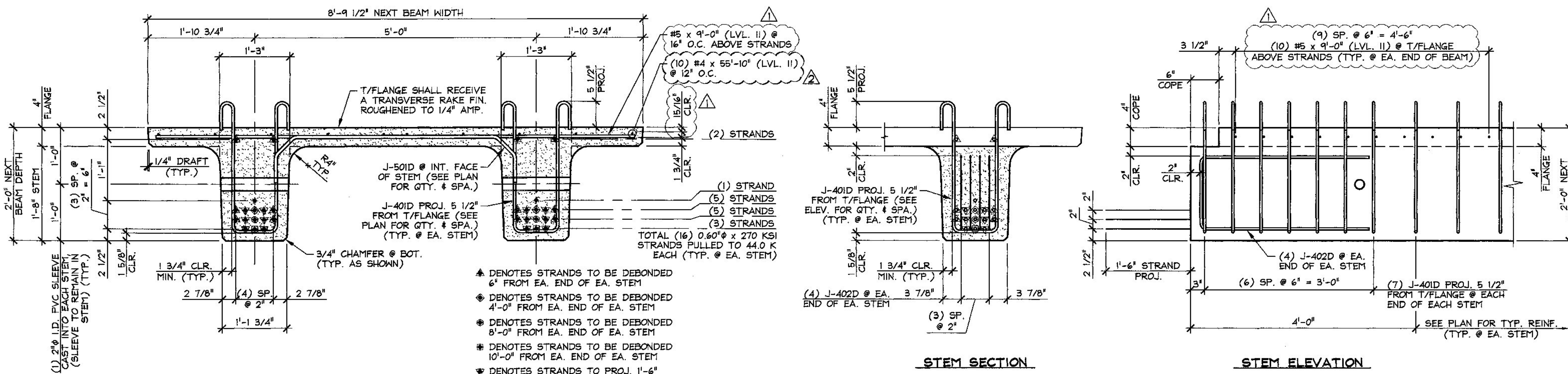
1 DIMENSIONAL NEXT BEAM PLAN VIEW IN FORM
1/4" = 1'-0"



2 REINFORCING NEXT BEAM PLAN VIEW IN FORM
1/4" = 1'-0"

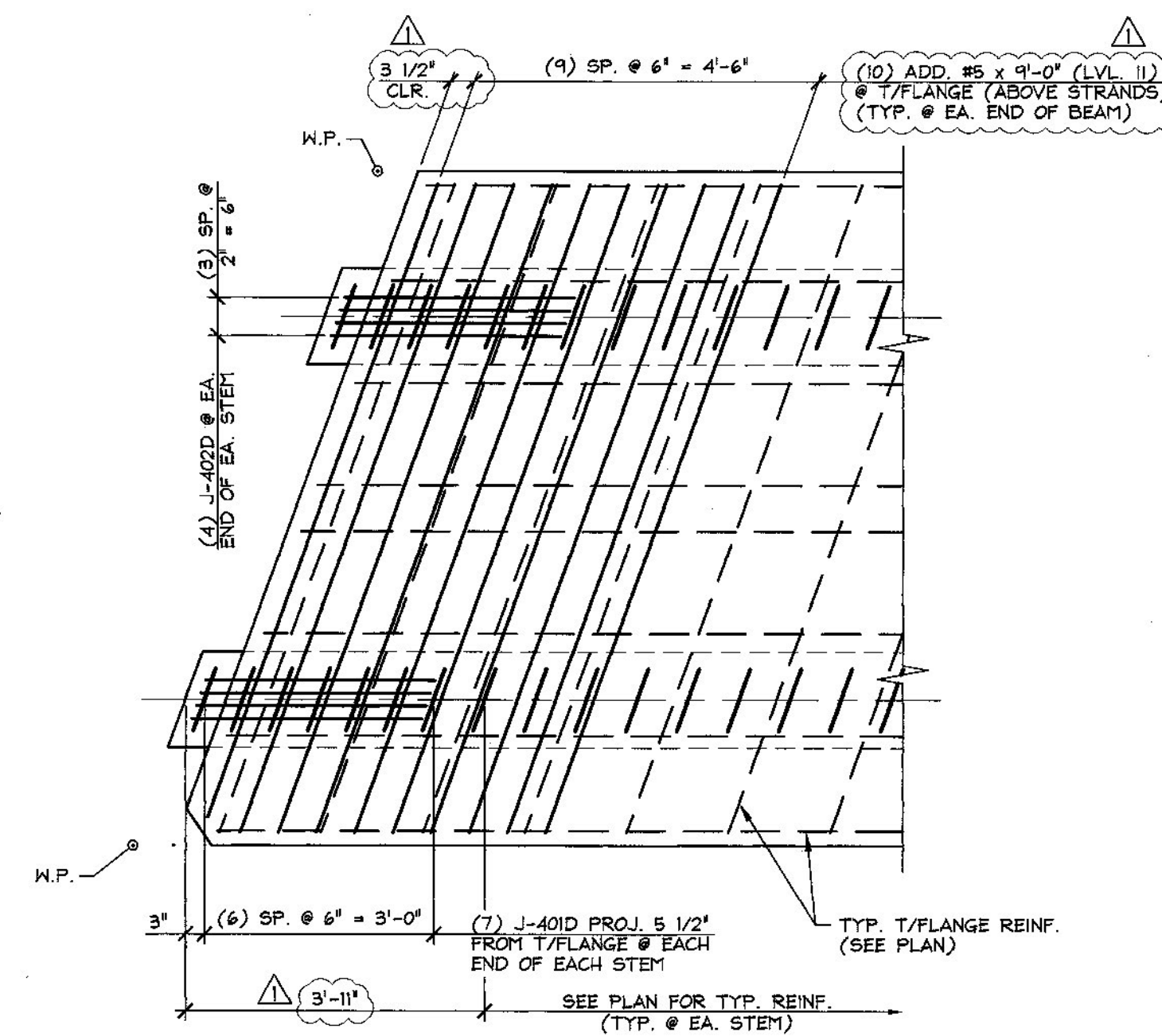


DETAIL - "A"
3" = 1'-0"



A DIMENSIONAL & REINFORCING SECTION
3/4" = 1'-0"

B END BLOCK STEM REINFORCING DETAILS
3/4" = 1'-0"



C END BLOCK REINFORCING PLAN
(J-501D BARS NOT SHOWN FOR CLARITY)
1/2" = 1'-0"

Vermont Agency of Transportation
RECEIVED

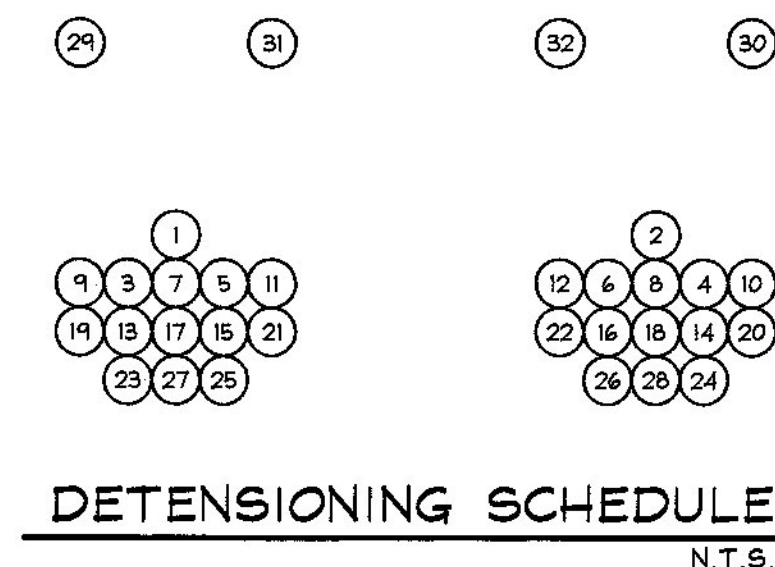
CK'D BY CLB OK'D BY HIS

November 20, 2014

RESUBMIT NO Approved
BY C. CARLSON DATE 11/21/14

MARK: J-BI	QTY.: 2	WT.: 29.78 T	VOL.: 14.71 cy
------------	---------	--------------	----------------

MATERIAL LIST / NEXT BEAM			
ITEM	MARK	DESCRIPTION	QTY.
1	J-401D	#4 BENT BAR (LEVEL II, DUAL COATED)	(178)
2	J-402D	#4 BENT BAR (LEVEL II, DUAL COATED)	16
3		#4 x 55'-10' (LEVEL II, DUAL COATED)	(10)
4			
5	J-501D	#5 BENT BAR (LEVEL II, DUAL COATED)	40
6		#5 x 9'-0' (LEVEL II, DUAL COATED)	63
7			
8			
9			
10			
11			
12			
13			
14		SET OF (3) 0.60" x 270 KSI STRAND LIFTING LOOPS	4
15			



DETENSING SCHEDULE
N.T.S.

11-19-14 REVISED AS NOTED
11-5-14 REVISED AS NOTED

APPROVAL STAMP:	J.P. CARRARA & SONS INC. Precast & Prestress Manufacturer 2464 CASE STR., MIDDLEBURY, VERMONT 05753 Phone: (802)388-6361 Fax: (802)388-9010	A.L. ST. ONGE CONTRACTOR MONTOMERY, VERMONT
	STATE OF VERMONT AGENCY OF TRANSPORTATION COUNTY OF LAMOILLE	DATE: SEPT. 30, 2014 SCALE: NOTED
	CITY OF JOHNSON ROUTE NO.: VT 15 (MINOR ARTERIAL) BRIDGE NO.: 32 PROJECT NO.: BRP 030-2(26)	CHKD: - DFTM: B.L. JOB NO: 23442-014
PRESTRESSED NEXT BEAM DETAILS		DWG. NO: B1