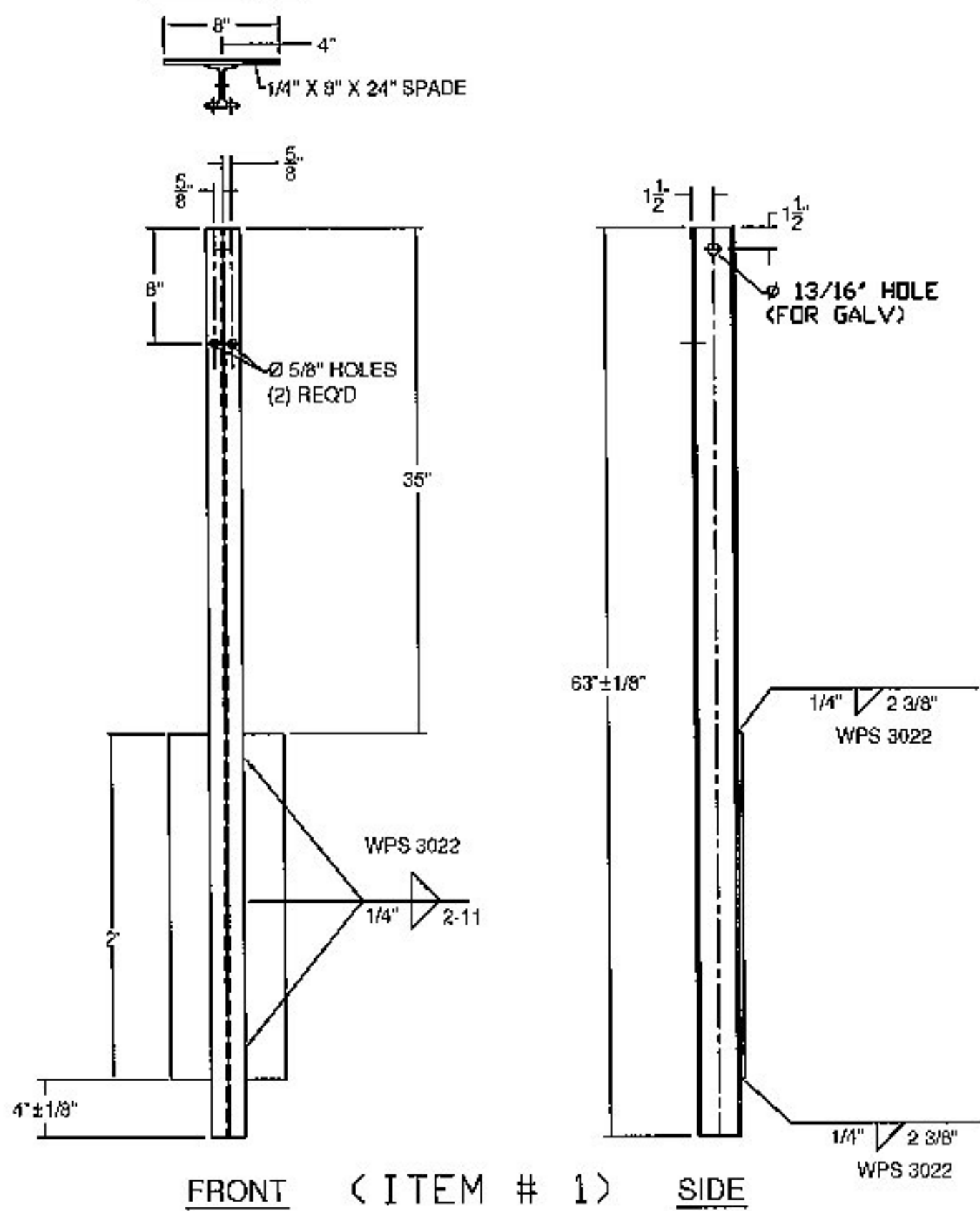
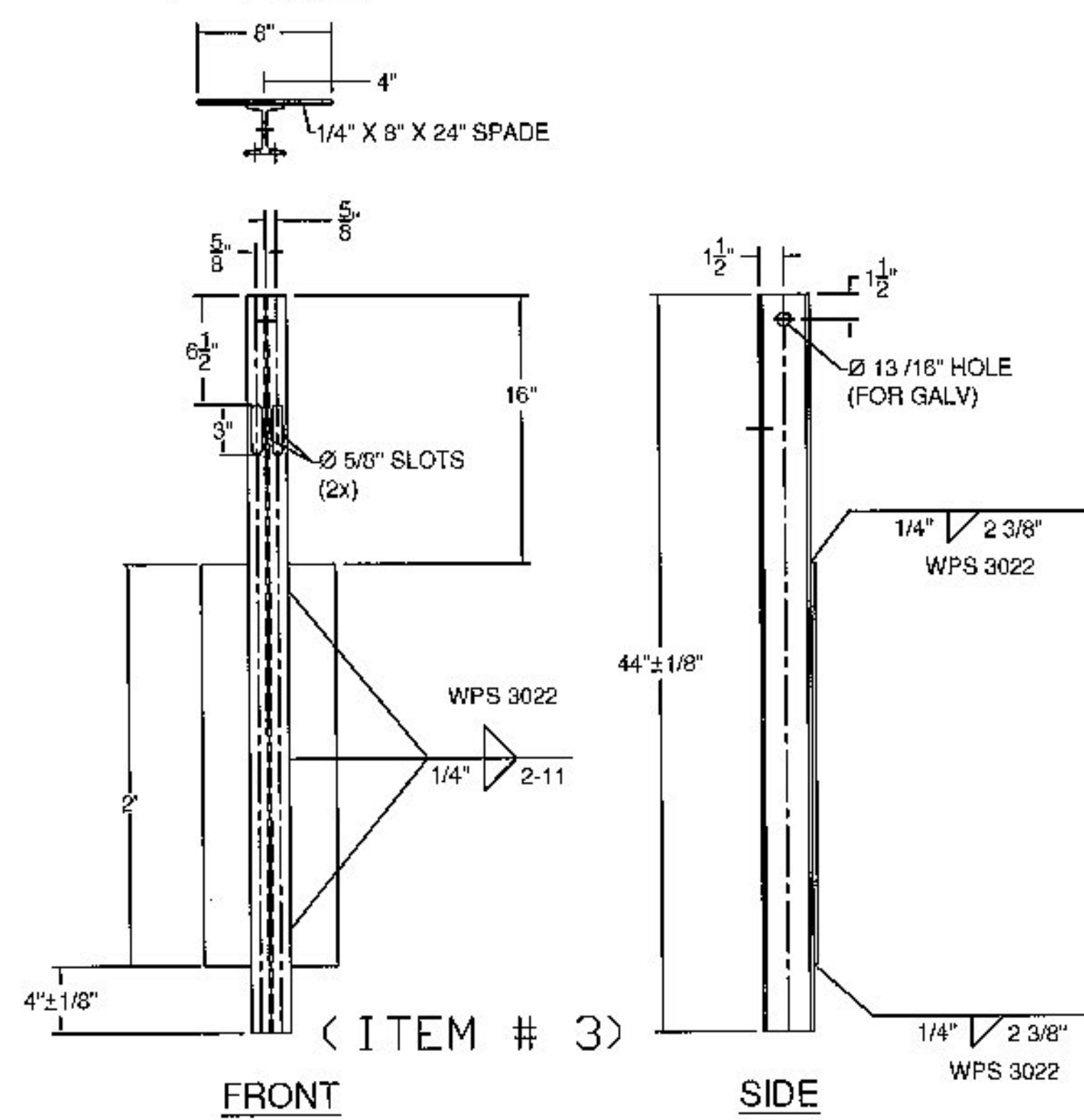


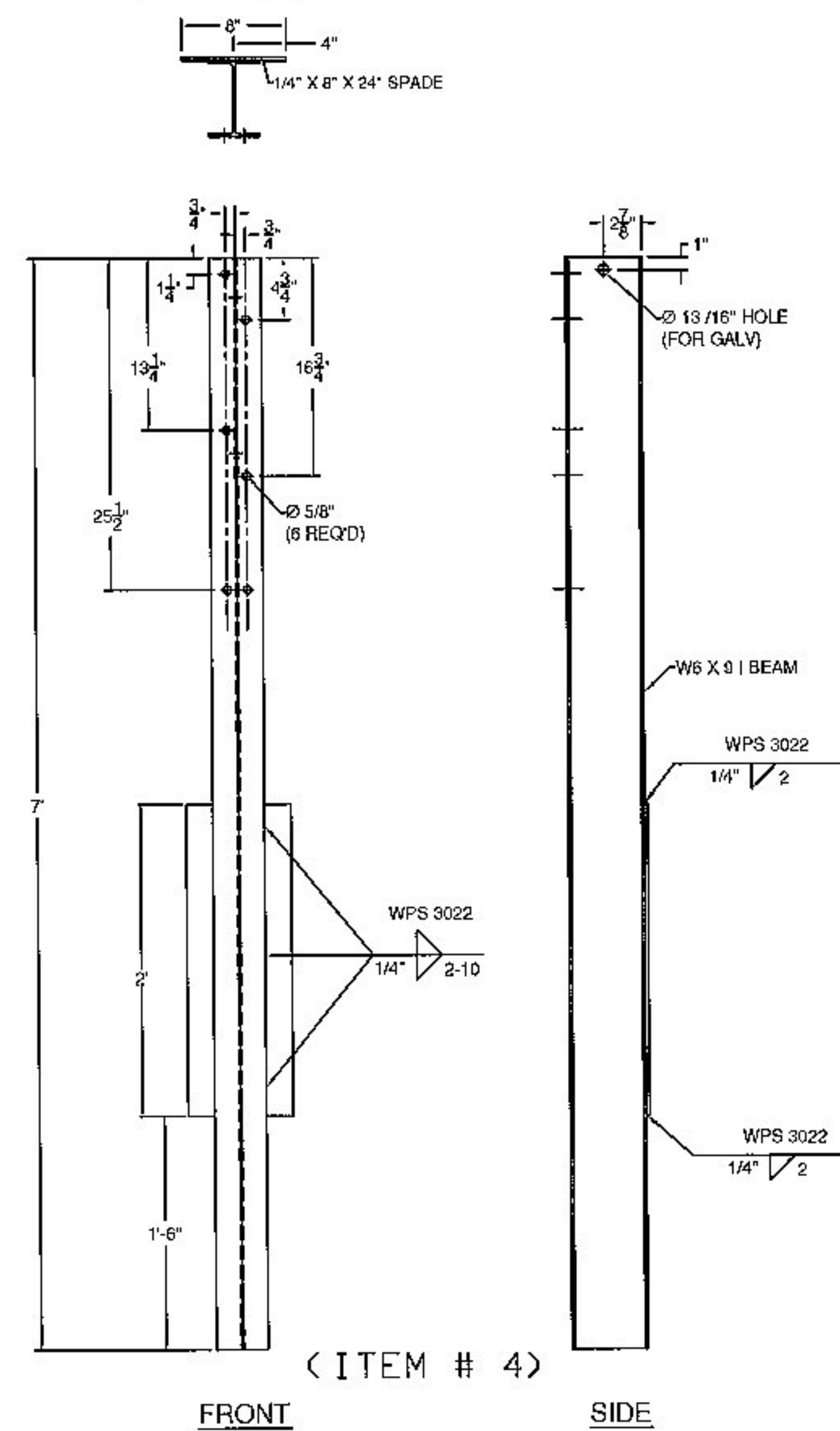
PLAN VIEW



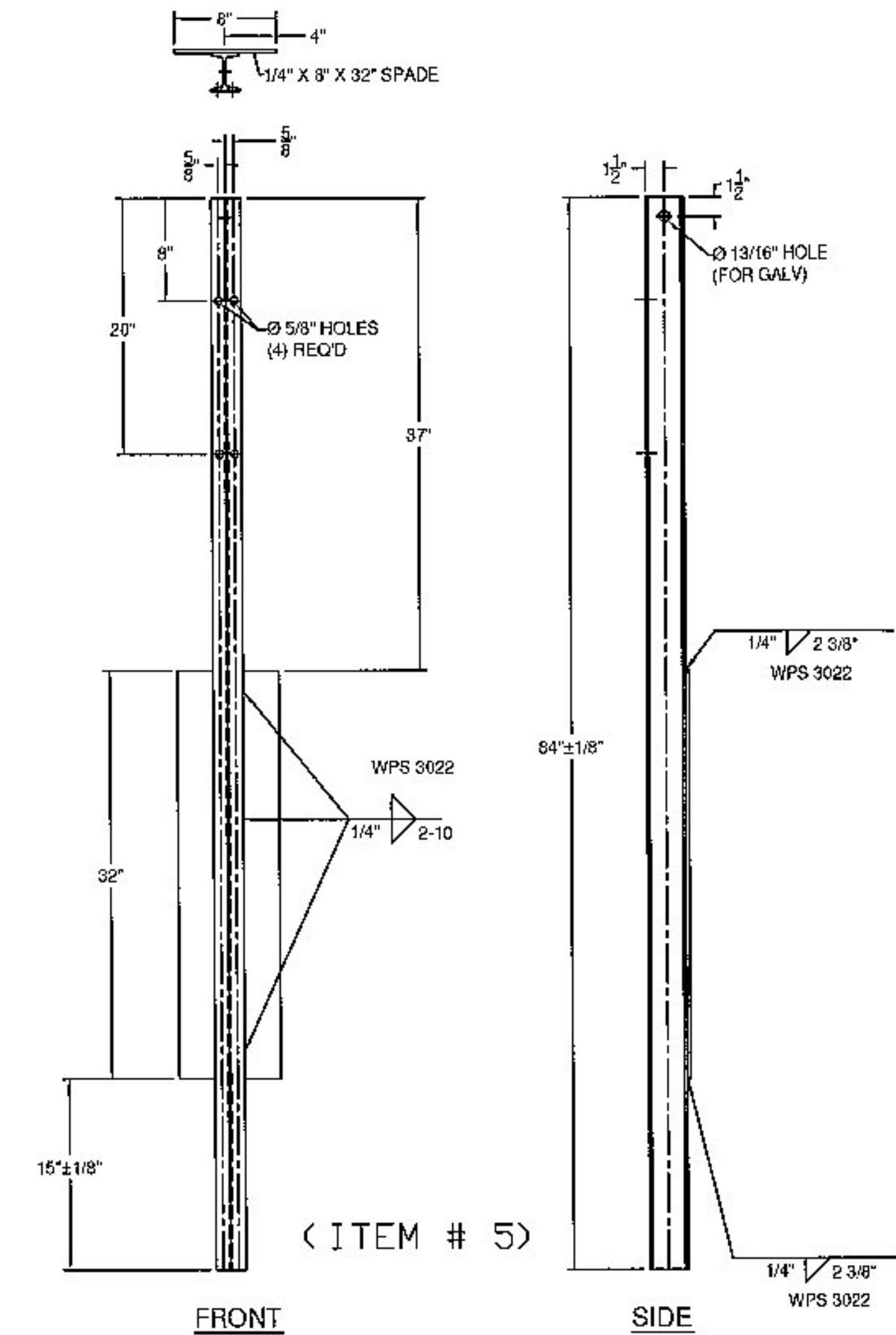
PLAN VIEW



PLAN VIEW

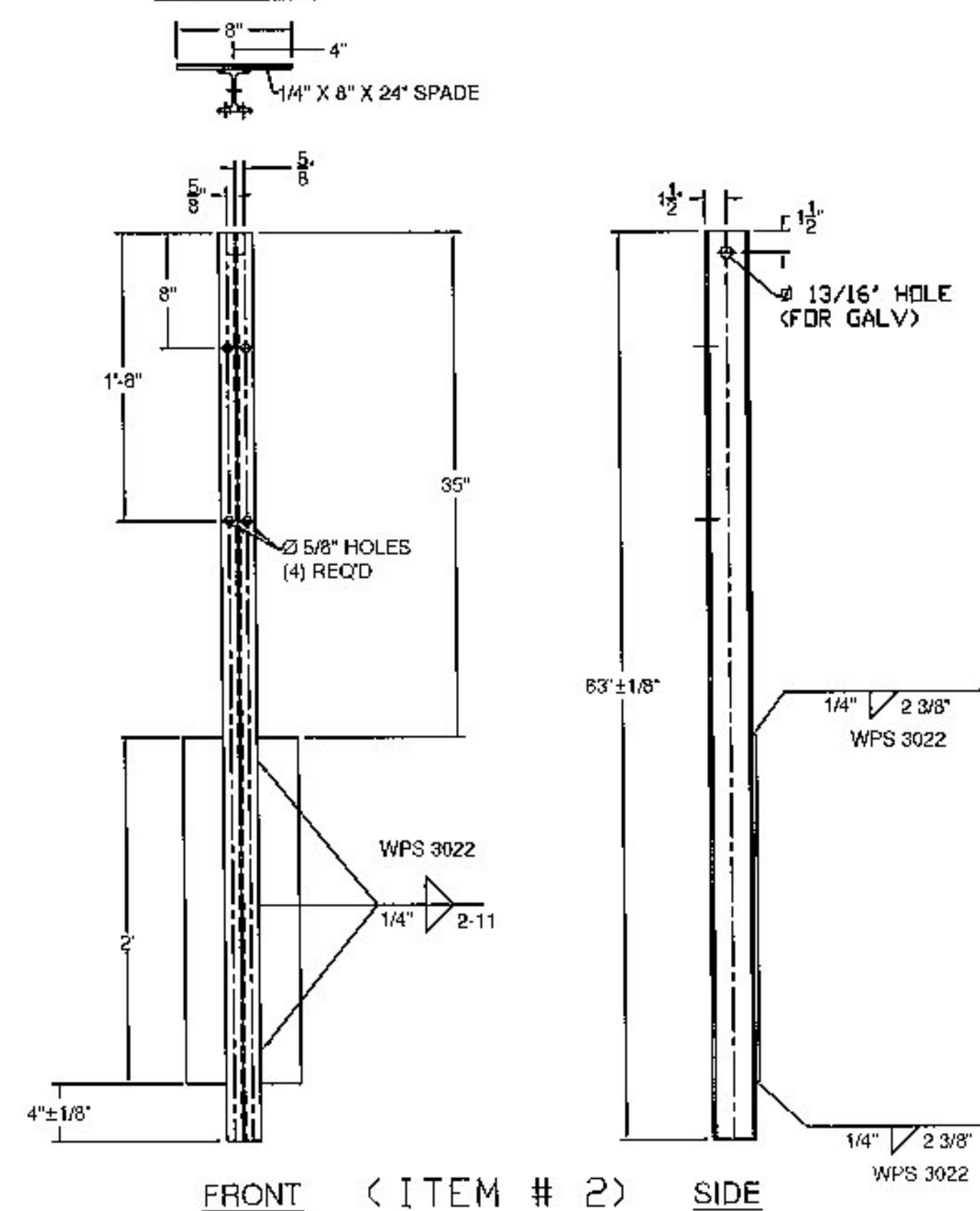


PLAN VIEW



HARDWARE NOTES	
ITEM #	FUNCTION
19	BOLT RAIL TO SHELF ANGLE (ITEM #10)
20	BOLT SHELF ANGLE (ITEM #'S 10 & 11) TO POST
21	BOLT BLOCK-OUTS (ITEM #'S 13 & 14) TO HEAVY POST
22	(4) PER SPLICE BAR (ITEM #9)
23	(4) PER SPLICE TUBING (ITEM #'S 7 & 8)
24	BOLT RAIL (ITEMS #'S 6,17, & 18) TO BLOCK-OUTS (ITEM #'S 13 & 14) (WHERE FASTENED)
25	BOLT DOUBLE BEND SPLICE TUBE (ITEM #12) TO RAIL (ITEM #18) & KICKBACK (ITEM #15)

PLAN VIEW



BILL OF MATERIALS (EACH CORNER)				
ITEM #	QTY.	COMPONENT #	DESCRIPTION	MATERIAL (ASTM)
1	3	0013.57021	3' I-POST, PUNCH 8" W/SPD @ 63" LG	ASTM A572 Gr. 50
2	3	0013.57025	3' I-POST, PUNCH 8", & 20" W/SPD @ 63" LG	ASTM A572 Gr. 50
3	2	0013.57060	3' I-END POST W/SPD @ 3'-8" LG	ASTM A572 Gr. 50
4	4	0013.09001	W6X9 POST @ 7" W/SPD @ 5/8" HOLES	ASTM A572 Gr. 50
5	4	0013.57010	3' I-POST, PUNCH 8" & 20", W/8X32" SPADE @ 7"	ASTM A572 Gr. 50
6	1	0033.80403	3X5" BTM TRANS RAIL W/5'-0" KB, EXP END (WV2-4)	A500 Gr. B
6	1	0033.91349	3X5" BTM TRANS RAIL W/5'-0" KB, EXP END & 22" ANGLE (WV1)	A500 Gr. B
7	1	0033.00640	HSS 5X5 TUBE SPLICE @ 27" LG W/ 1/4" SHIMS (WV2-4)	A500 Gr. B / A572 Gr. 50
7	1	0033.00606	HSS 5X5 TUBE SPLICE @ 27" LG W/ 1/4" SHIMS & 6" BEND (WV1)	A500 Gr. B / A572 Gr. 50
8	2	0033.00730	HSS 5X5 EXP TUBE SPLICE @ 36" LG W/ 1/4" SHIMS	A500 Gr. B / A572 Gr. 50
9	1	0033.00930	BR EXP BAR SPLICE 2-1/8" X 4-1/4" @ 36" LG	ASTM A572 Gr. 50
10	19	0054.00050	REG BB SHELF ANGLES @ 4-1/2"	ASTM A36
12	1	0054.00074	HSS 5X5 DBL BEND TUBE SPL @ 27" LG, (25" ANGLE WV2 & 3)	A500 Gr. B / A572 Gr. 50
12	1	0033.90408	HSS 5X5 DBL BEND TUBE SPL @ 27" LG, (40" ANGLE WV1)	A500 Gr. B / A572 Gr. 50
12	1	0033.90409	HSS 5X5 DBL BEND TUBE SPL @ 27" LG, (35" ANGLE WV4)	A500 Gr. B / A572 Gr. 50
13	8	0054.00563	6X8" TRANS. TUBE B/D @ 6" LG	A500 Gr. B
14	3	0054.00565	6X8" TRANS. TUBE B/D @ 3" LG	A500 Gr. B
15	1	0054.09000	6X6" BB @ 9'-0" KICKBACK, W/ CAP, & 13" ANGLE (WV2 & 3)	A500 Gr. B / A36
15	1	0033.91350	6X6" BB @ 9'-0" KICKBACK, W/ CAP, & 20" ANGLE (WV1)	A500 Gr. B / A36
15	1	0033.91351	6X6" BB @ 9'-0" KICKBACK, W/ CAP, & 18" ANGLE (WV4)	A500 Gr. B / A36
16	0.5	0054.18000	6X6" BB @ 17'-11 1/2", DRILL 3" CC (STRAIGHT - WV2 & 3)	A500 Gr. B
16	0.5	0057.90059	6X6" BB @ 18'-11 1/2", DRILL 3" CC (25" RADIUS - WV1) & DROP END	A500 Gr. B
16	0.5	0057.90058	6X6" BB @ 17'-11 1/2", DRILL 3" CC (30" RADIUS - WV4)	A500 Gr. B
17	1	0054.90092	6X6" BB TOP TRANS @ 20'-9 5/8" LG W/EXP END (STRAIGHT - WV2 & 3)	A500 Gr. B
17	1	0033.91332	6X6" BB TOP TRANS @ 20'-9 5/8" LG W/EXP END (25" RADIUS - WV1)	A500 Gr. B
17	1	0033.91353	6X6" BB TOP TRANS @ 20'-9 5/8" LG W/EXP END (30" PARTIAL RADIUS - WV4)	A500 Gr. B
18	1	0054.90093	6X6" BB BTM TRANS @ 21'-4 5/8" LG W/EXP END (STRAIGHT - WV2 & 3)	A500 Gr. B
18	1	0033.91354	6X6" BB BTM TRANS @ 21'-4 5/8" LG W/EXP END (25" RADIUS - WV1)	A500 Gr. B
18	1	0033.91355	6X6" BB BTM TRANS @ 21'-4 5/8" LG W/EXP END (30" PARTIAL RADIUS - WV4)	A500 Gr. B
19	18	0080.03355	3/8" X 7 1/2" BOLT, NUT, & 2 FW	A307
20	19	0080.04100	1/2" X 1-1/2" BOLT, NUT, & FW	A307
21	22	0080.04120	1/2" X 1-1/2" BOLT, NUT, 2 FW & LW	A307
22	4	0080.06255	3/4" X 4-1/2" BOLT, NUT, 2 FW	A325, A563, F436
23	12	0080.06340	3/4" X 7-1/2" BOLT, NUT, 2 FW	A325, A563, F436
24	6	0080.06370	3/4" X 8" CARR BOLT, NUT, FW & LW	A307
25	2	0080.06400	3/4" X 8" BOLT, NUT, 2 FW, & LW	A325, A563, F436

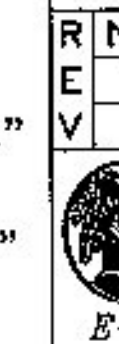
GENERAL NOTES:

- 1) ALL RAILING IS TO BE FABRICATED AND ERECTED ACCORDING TO SECTION 525 OF THE STANDARD SPECIFICATIONS.
- 2) BOLTS SHALL BE TORQUED SNUG TIGHT (APPROXIMATELY 100 FT-LB).
- 3) PROTRUSIONS CAUSED BY WELDING OR GALVANIZING ARE NOT PERMITTED ON THE ADJOINING SURFACES OF THE BOX BEAM RAILS, SPLICE TUBES AND FILL PLATES.
- 4) BOX BEAM TUBE AND STEEL POST MATERIALS, DIMENSION SIZES AND NOTES SHALL BE THE SAME AS THOSE OF THE BRIDGE RAIL, UNLESS OTHERWISE NOTED.
- 5) ANY BENDING OF RAIL SHALL BE DONE AT THE FABRICATION PLANT. RADII GREATER THAN 16' TO BE CURVED ON A TUBE BENDING MACHINE, RADII LESS THAN 16' TO BE "PIE CUT" AND WELDED. CURVED RAILING WILL HAVE AN 18" LENGTH ON EACH END STRAIGHT TO ACCOMMODATE SPLICES. "PIE CUTS" ARE LOCATED SO AS NOT CONFLICT WITH POST FASTENING HOLES. "PIE CUTS" WILL BE WELDED ACCORDING TO PROCEDURE WPS-3026.

ITEM #: 621.725

STRUCTURAL STEEL TO COMPLY W/ ASTM A6

TOLERANCE UNLESS OTHERWISE NOTED:
 FRACTIONS = ± 1/16"
 ANGLES = ± 1/2"
 DIAMETERS = ± 1/32"



Vermont Agency of Transportation

RECEIVED

141-000001-001

RNC
E
V

CK'D BY CLB OK'D BY HIS

January 19, 2015

RESUBMIT NO
BY C. CARLSON

Approved

DATE 01/20/15