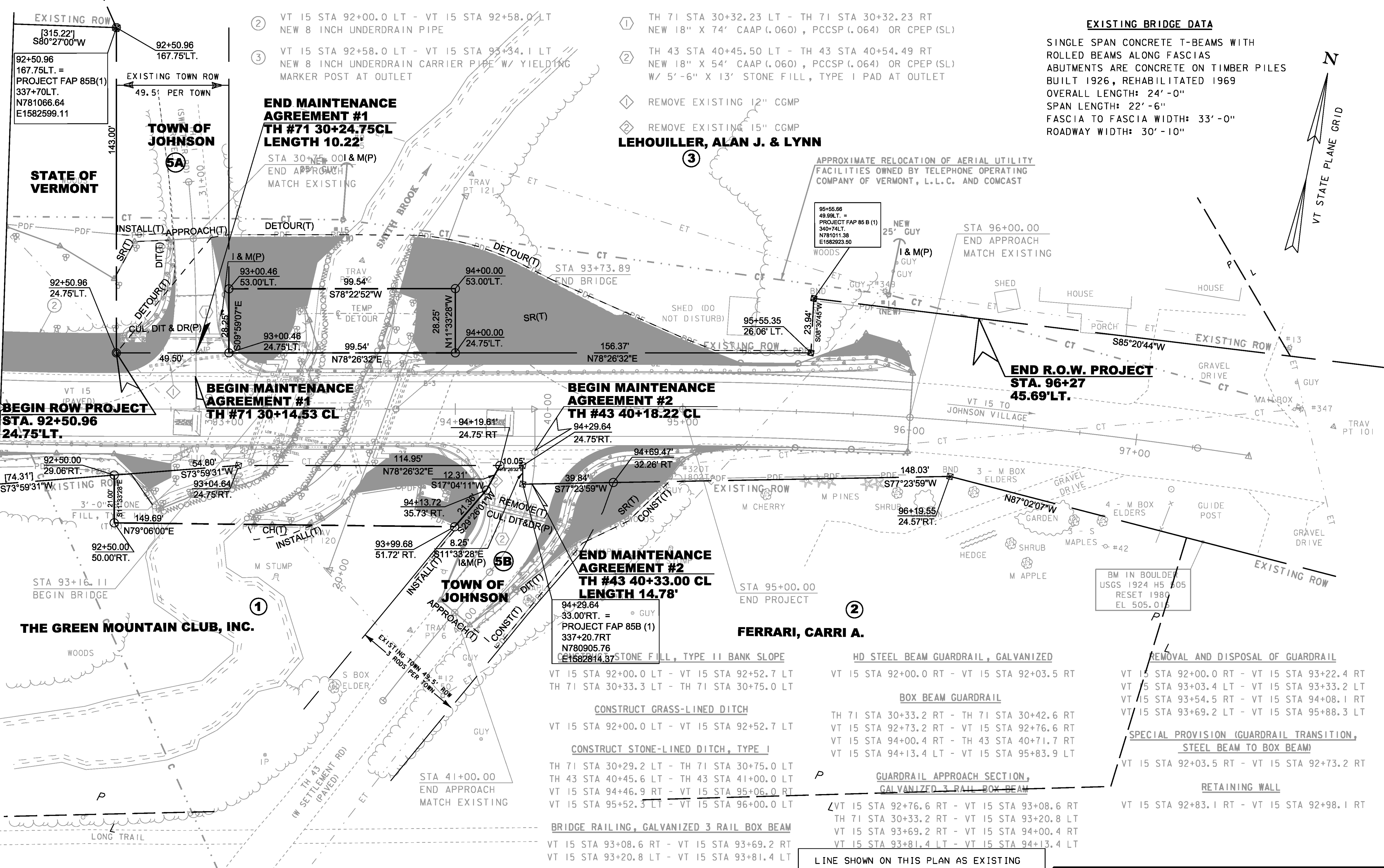


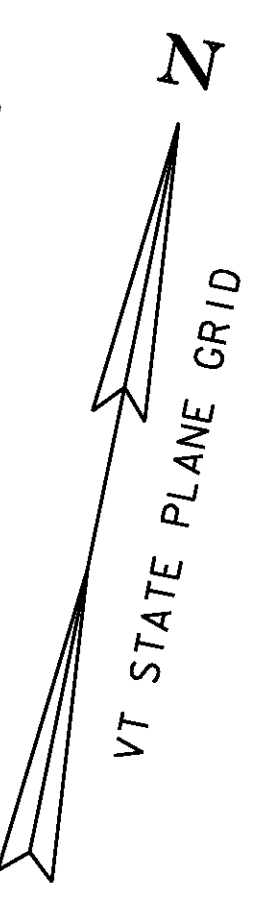
STA 92+00.00

MATCHLINE



**EXISTING BRIDGE DATA**

SINGLE SPAN CONCRETE T-BEAMS WITH ROLLED BEAMS ALONG FASCIAS  
 ABUTMENTS ARE CONCRETE ON TIMBER PILES  
 BUILT 1926, REHABILITATED 1969  
 OVERALL LENGTH: 24'-0"  
 SPAN LENGTH: 22'-6"  
 FASCIA TO FASCIA WIDTH: 33'-0"  
 ROADWAY WIDTH: 30'-10"



- ② VT 15 STA 92+00.0 LT - VT 15 STA 92+58.0 LT  
NEW 8 INCH UNDERDRAIN PIPE
- ③ VT 15 STA 92+58.0 LT - VT 15 STA 93+34.1 LT  
NEW 8 INCH UNDERDRAIN CARRIER PIPE W/ YIELDING MARKER POST AT OUTLET

- ① TH 71 STA 30+32.23 LT - TH 71 STA 30+32.23 RT  
NEW 18" X 74' CAAP (.060), PCCSP (.064) OR CPEP (SL)
- ② TH 43 STA 40+45.50 LT - TH 43 STA 40+54.49 RT  
NEW 18" X 54' CAAP (.060), PCCSP (.064) OR CPEP (SL)  
W/ 5'-6" X 13' STONE FILL, TYPE I PAD AT OUTLET

- ① REMOVE EXISTING 12" CGMP
  - ② REMOVE EXISTING 15" CGMP
- LEHOULLIER, ALAN J. & LYNN**

APPROXIMATE RELOCATION OF AERIAL UTILITY FACILITIES OWNED BY TELEPHONE OPERATING COMPANY OF VERMONT, L.L.C. AND COMCAST

**END MAINTENANCE AGREEMENT #1**  
**TH #71 30+24.75CL**  
**LENGTH 10.22'**

**BEGIN MAINTENANCE AGREEMENT #1**  
**TH #71 30+14.53 CL**

**BEGIN MAINTENANCE AGREEMENT #2**  
**TH #43 40+18.22 CL**

**END MAINTENANCE AGREEMENT #2**  
**TH #43 40+33.00 CL**  
**LENGTH 14.78'**

**END R.O.W. PROJECT**  
**STA. 96+27**  
**45.69'LT.**

**BEGIN ROW PROJECT**  
**STA. 92+50.96**  
**24.75'LT.**

STONE FILL, TYPE II BANK SLOPE  
 VT 15 STA 92+00.0 LT - VT 15 STA 92+52.7 LT  
 TH 71 STA 30+33.3 LT - TH 71 STA 30+75.0 LT

CONSTRUCT GRASS-LINED DITCH  
 VT 15 STA 92+00.0 LT - VT 15 STA 92+52.7 LT

CONSTRUCT STONE-LINED DITCH, TYPE I  
 TH 71 STA 30+29.2 LT - TH 71 STA 30+75.0 LT  
 TH 43 STA 40+45.6 LT - TH 43 STA 41+00.0 LT  
 VT 15 STA 94+46.9 RT - VT 15 STA 95+06.0 RT  
 VT 15 STA 95+52.3 LT - VT 15 STA 96+00.0 LT

BRIDGE RAILING, GALVANIZED 3 RAIL BOX BEAM  
 VT 15 STA 93+08.6 RT - VT 15 STA 93+69.2 RT  
 VT 15 STA 93+20.8 LT - VT 15 STA 93+81.4 LT

HD STEEL BEAM GUARDRAIL, GALVANIZED  
 VT 15 STA 92+00.0 RT - VT 15 STA 92+03.5 RT

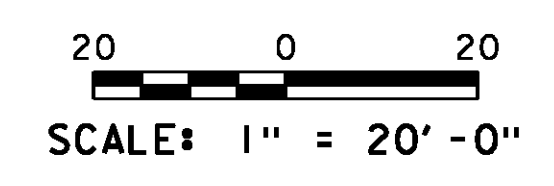
BOX BEAM GUARDRAIL  
 TH 71 STA 30+33.2 RT - TH 71 STA 30+42.6 RT  
 VT 15 STA 92+73.2 RT - VT 15 STA 92+76.6 RT  
 VT 15 STA 94+00.4 RT - TH 43 STA 40+71.7 RT  
 VT 15 STA 94+13.4 LT - VT 15 STA 95+83.9 LT

GUARDRAIL APPROACH SECTION, GALVANIZED 3 RAIL BOX BEAM  
 VT 15 STA 92+76.6 RT - VT 15 STA 93+08.6 RT  
 TH 71 STA 30+33.2 RT - VT 15 STA 93+20.8 LT  
 VT 15 STA 93+69.2 RT - VT 15 STA 94+00.4 RT  
 VT 15 STA 93+81.4 LT - VT 15 STA 94+13.4 LT

REMOVAL AND DISPOSAL OF GUARDRAIL  
 VT 15 STA 92+00.0 RT - VT 15 STA 93+22.4 RT  
 VT 15 STA 93+03.4 LT - VT 15 STA 93+33.2 LT  
 VT 15 STA 93+54.5 RT - VT 15 STA 94+08.1 RT  
 VT 15 STA 93+69.2 LT - VT 15 STA 95+88.3 LT

SPECIAL PROVISION (GUARDRAIL TRANSITION, STEEL BEAM TO BOX BEAM)  
 VT 15 STA 92+03.5 RT - VT 15 STA 92+73.2 RT

RETAINING WALL  
 VT 15 STA 92+83.1 RT - VT 15 STA 92+98.1 RT



**FOR R.O.W. USE ONLY**

LINE SHOWN ON THIS PLAN AS EXISTING PROPERTY LINES P/L ARE BELIEVED TO BE ACCURATE BUT SHOULD NOT BE RELIED UPON FOR PURPOSES UNRELATED TO THE STATE OF VERMONT'S ACQUISITION OF LAND AND RIGHTS FOR THIS PROJECT.

PROJECT NAME: JOHNSON	PLOT DATE: 11-JUL-2014
PROJECT NUMBER: BRF 030-2(26)	DRAWN BY: G. ROY
FILE NAME: s88b193bdr.dgn	CHECKED BY: H. SALLS
PROJECT LEADER: C. CARLSON	SHEET 69 OF 69
DESIGNED BY: G. ROY	
ROW LAYOUT 2	

**N/F MANCHESTER, HENRY K. & AMANDA**

APPROXIMATE RELOCATION OF AERIAL UTILITY FACILITIES OWNED BY COMCAST (TO BE DONE BY OTHERS)