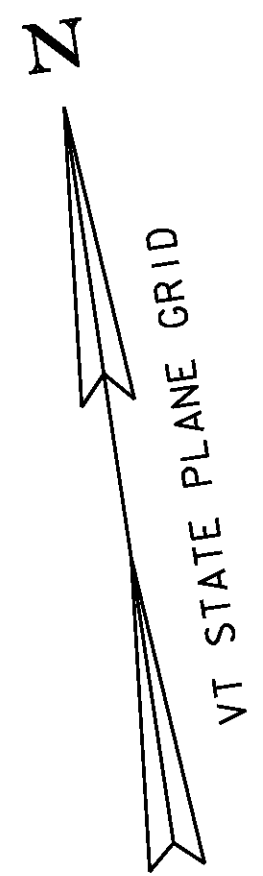


**N/F  
LEHOULLIER, ALAN J. & PATRICIA TRUSTEES  
OF THE PATRICIA E. LEHOULLIER FAMILY TRUST**

**N/F MANCHESTER**

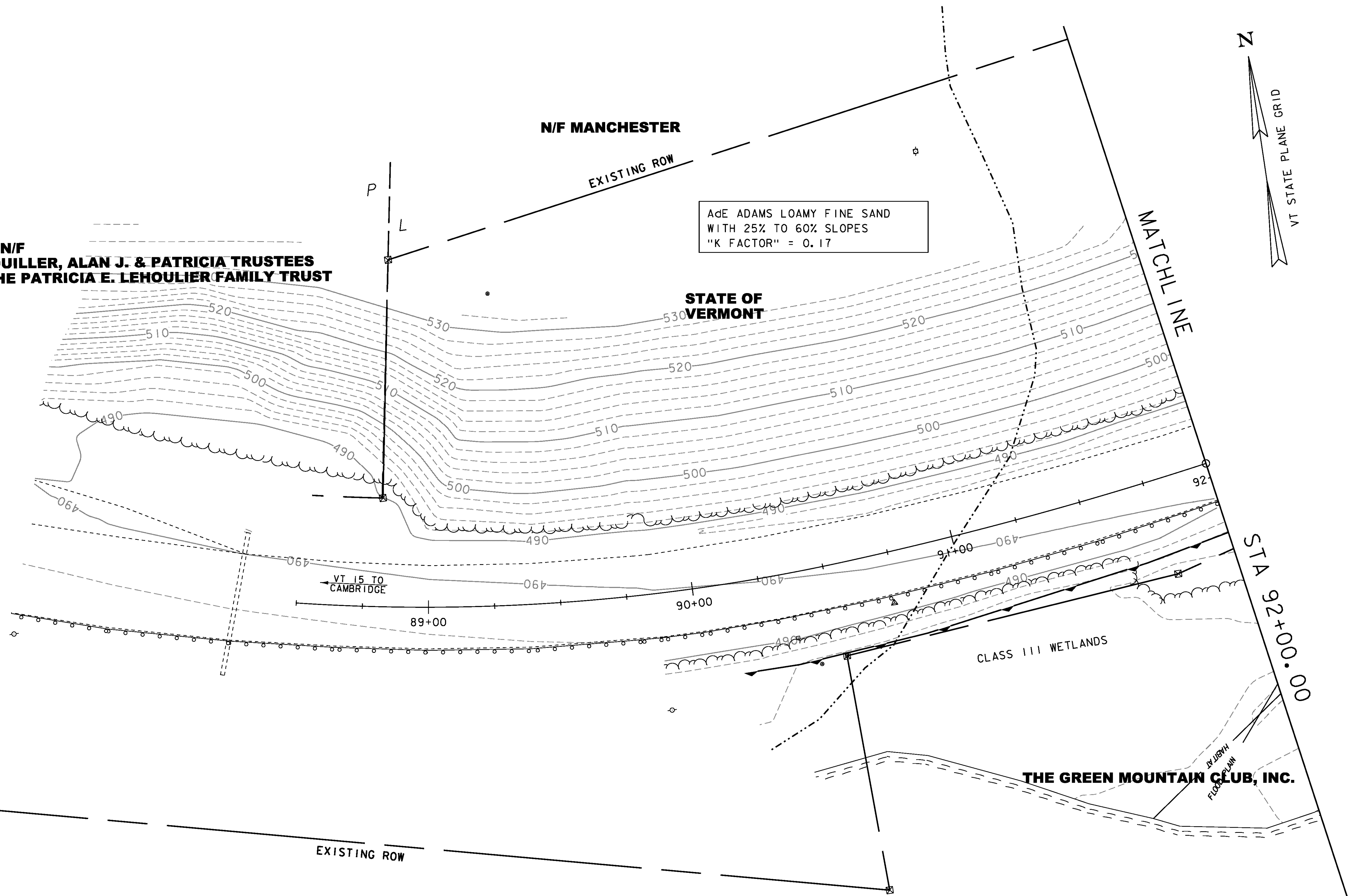
AdE ADAMS LOAMY FINE SAND  
WITH 25% TO 60% SLOPES  
"K FACTOR" = 0.17

**STATE OF  
VERMONT**



MATCHLINE

STA 92+00.00



EXISTING ROW

CLASS III WETLANDS

**THE GREEN MOUNTAIN CLUB, INC.**

NOTE: SEE EPSC DETAILS &  
CONVENTIONAL SYMBOLOLOGY-LEGEND

|                               |                              |
|-------------------------------|------------------------------|
| PROJECT NAME: JOHNSON         | PLOT DATE: 27-JUN-2014       |
| PROJECT NUMBER: BRF 030-2(26) | DRAWN BY: R. PELLETT         |
| FILE NAME: s88b193eroex.dgn   | CHECKED BY: H. SALLS         |
| PROJECT LEADER: C. CARLSON    | EPSC EXISTING CONDITIONS (1) |
| DESIGNED BY: H. SALLS         | SHEET 58 OF 69               |

