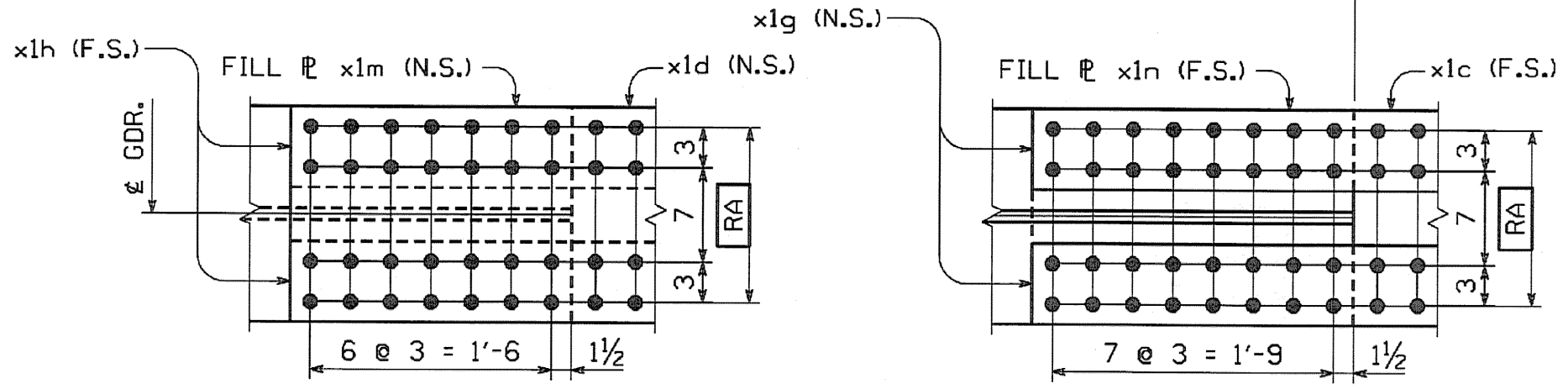
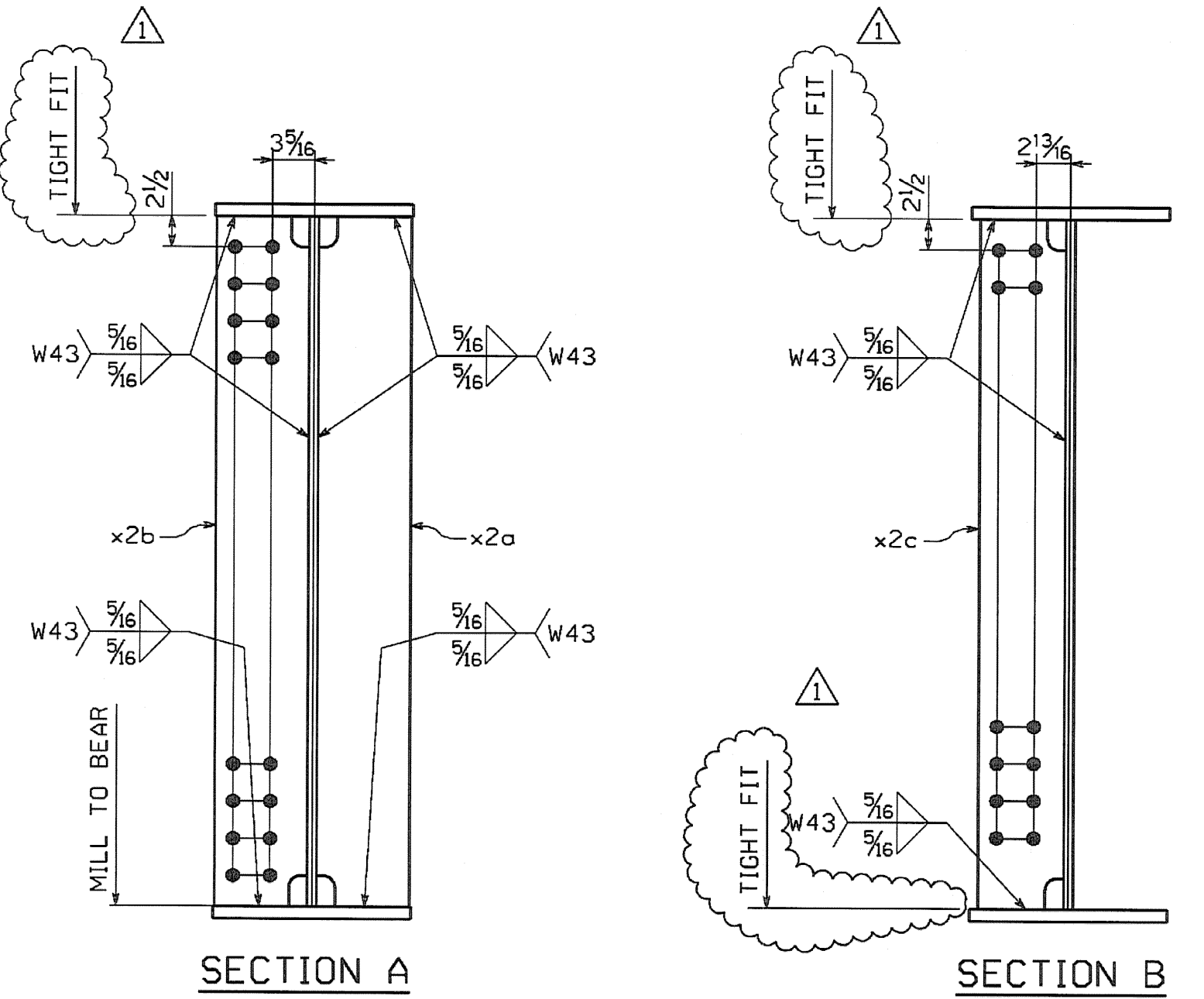


GIRDER ~ MK. G1A



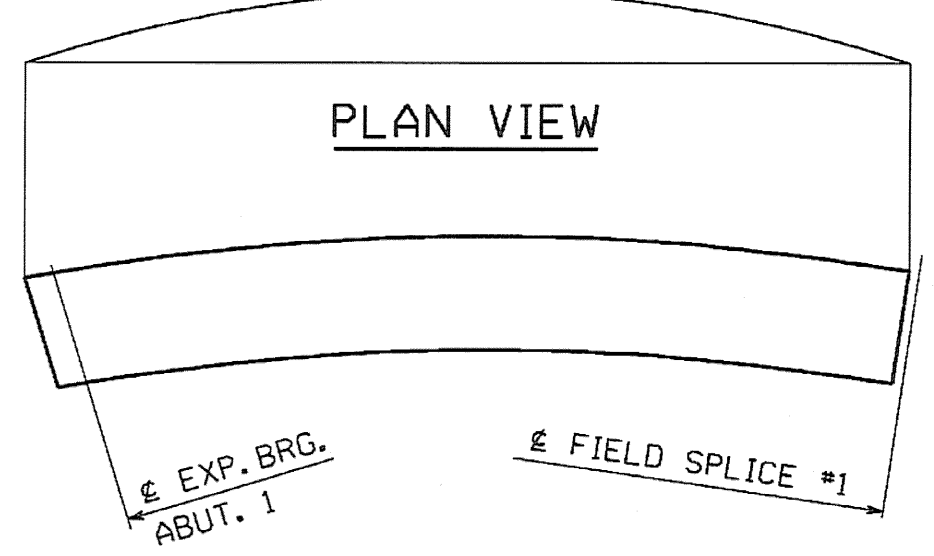
VIEW X



SECTION A

SECTION B

BILL OF MATERIAL													
QTY EA	MARK	COMM	DESCRIPTION	LENGTH	SPEC	GRADE	TEST	REMARKS	GRP	ITEM	GROSS WEIGHT EA	DEDUCTED WEIGHT EA	NET WEIGHT EA
1	G1A		GIRDER								19911.16	5.43	19905.73
1	w1	PL	5/8 x 56	73 11 11/16	M270	50W	T		3	5	8810.09	5.43	8804.66
1	t1	PL	1 x 16	37 0 5/16	M270	50W	T		4	7	2015.86	0.00	2015.86
1	t2	PL	1 x 16	36 11 3/8	M270	50W	T		4	7	2011.61	0.00	2011.61
1	b1	PL	1 1/2 x 16	36 11 1/4	M270	50W	T		4	6	3016.56	0.00	3016.56
1	b2	PL	1 1/2 x 16	36 11 3/8	M270	50W	T		4	6	3017.41	0.00	3017.41
2	x1a	PL	1/2 x 45	1 6 1/4	M270	50W	T		6	1	116.44	0.00	116.44
1	x1c	PL	1/2 x 16	3 6 1/4	M270	50W	T		6	3	95.84	0.00	95.84
1	x1d	PL	1/2 x 16	3 0 1/4	M270	50W	T		6	3	82.23	0.00	82.23
2	x1g	PL	1/2 x 6	3 6 1/4	M270	50W	T		6	4	35.94	0.00	35.94
2	x1h	PL	1/2 x 6	3 0 1/4	M270	50W	T		6	4	30.84	0.00	30.84
1	x1m	PL	1 x 16	1 9	M270	50W	T	FILL PL	6	5	95.28	0.00	95.28
1	x1n	PL	1/2 x 16	2 0	M270	50W	T	FILL PL	6	6	54.44	0.00	54.44
1	x2a	PL	3/4 x 7 1/2	4 8	M270	50W			7	1	89.32	0.00	89.32
1	x2b	PL	3/4 x 7 1/2	4 8	M270	50W	T		7	1	89.32	0.00	89.32
3	x2c	PL	1/2 x 7	4 8	M270	50W	T		7	2	55.58	0.00	55.58
TOTAL WEIGHT THIS SHEET:											19905.73	lbs.	



ORIENTATION DIAGRAM

RECEIVED
 OK'D BY: *KF* OK'D BY: _____
 JAN 30 2007
 RESUBMIT APPROVED: *KF*
 BY: *WJ* DATE: 1-31-2007

SHOP NOTE
 HOLES: 1/16" (U.N.)
 BOLTS: NONE
 PAINT: NONE
 FOR GENERAL SHOP NOTES, SEE DWG. GNI.
 FOR WEB CAMBER DIAGRAM, SEE DWG. WCI.
 FOR HORIZ. CURVE DIAGRAM, SEE DWG. HCI.

STATE CONTRACT OR REF. NO.	PROJECT NO. RANDOLPH BR 0241 (29)	MAF	1-19-07
CONTRACTOR	WINTERSET, INC.	BY	DATE
IN CHARGE	BRITIGAN (IH)	MADE BY	MAF
CONTRACT NUMBER	VT-06215-1	CHK'D BY	CS
		DATE	11-10-06
		DRAWING NUMBER	5 OF 14

CODE:30