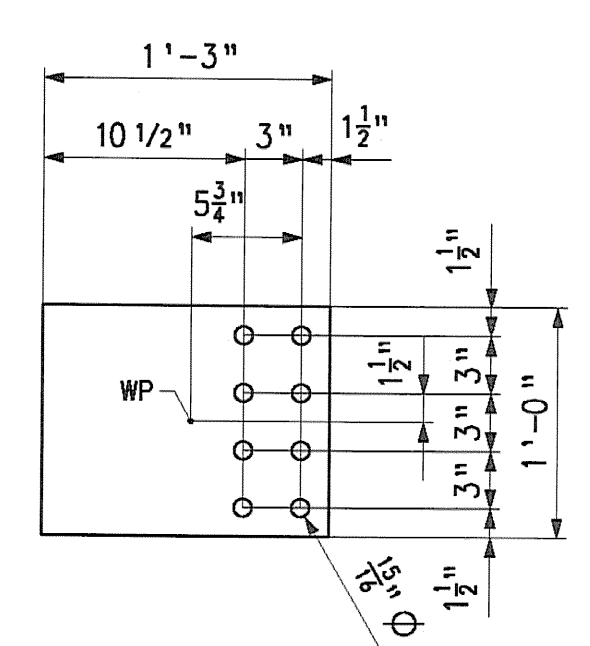
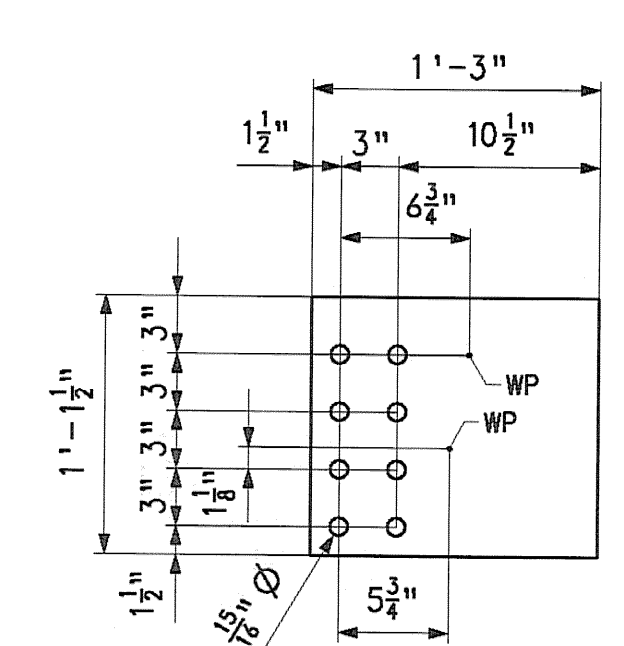


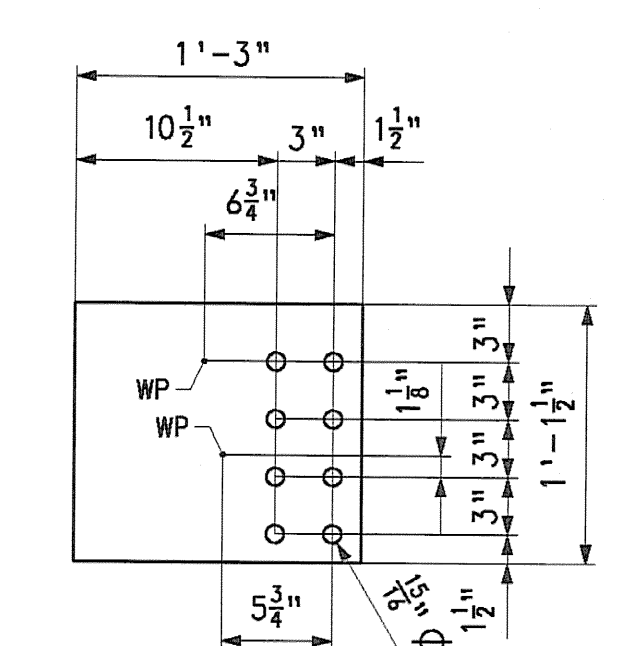
GUSSET PLATE MK. m1a



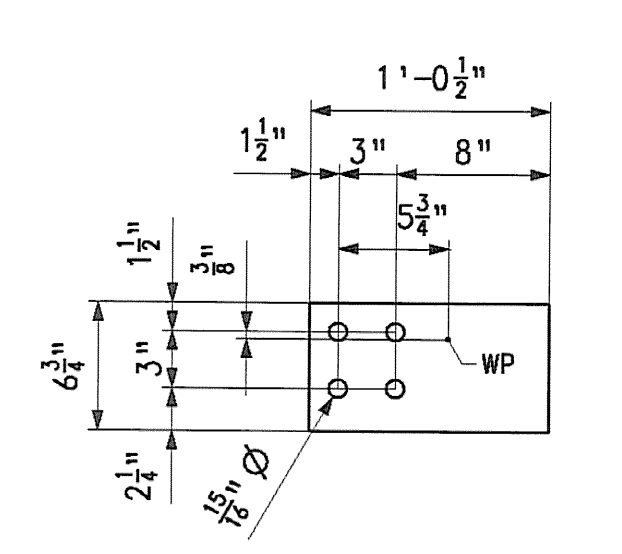
GUSSET PLATE MK. m1b



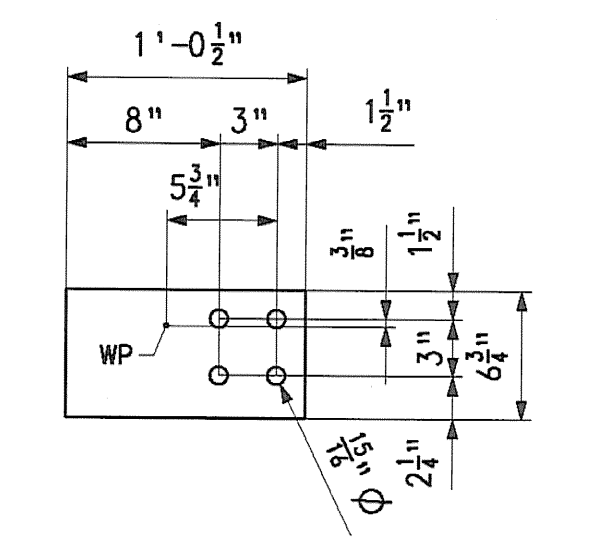
GUSSET PLATE MK. m1c



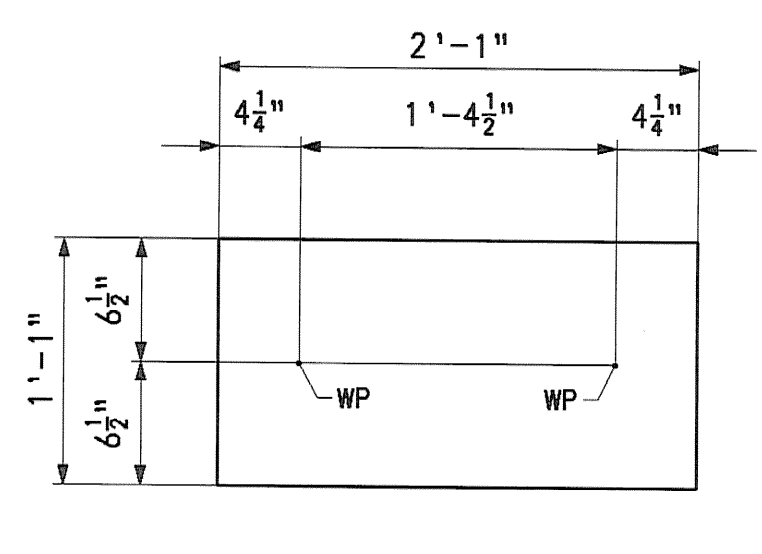
GUSSET PLATE MK. m1d



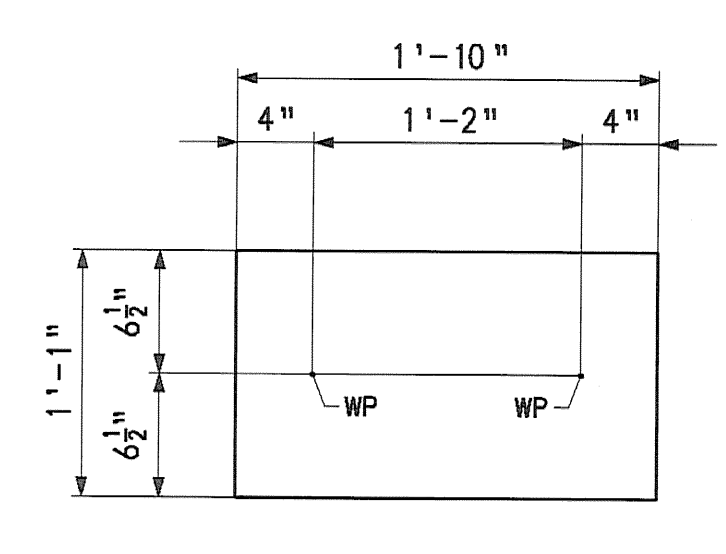
GUSSET PLATE MK. m1f



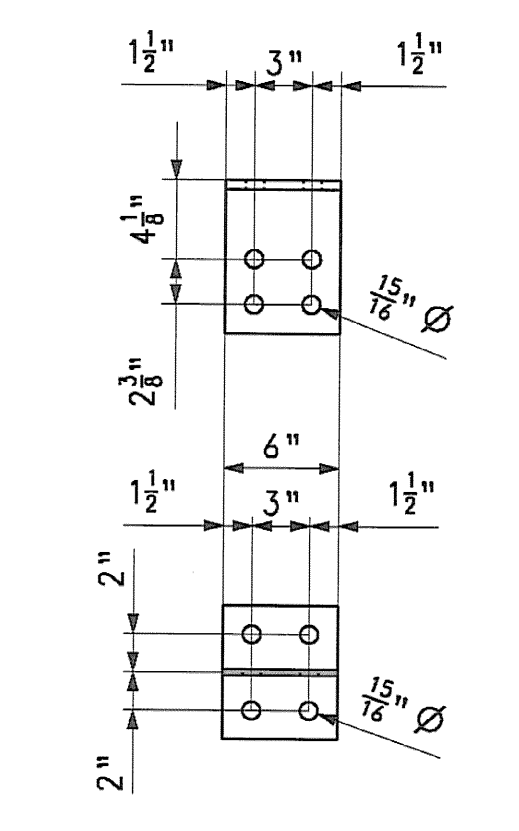
GUSSET PLATE MK. m1g



GUSSET PLATE MK. m1h



GUSSET PLATE MK. m1k



CONN. WT MK. m1m
(CODE: 56)

BILL OF MATERIAL															
SHIP	QTY EA.	MARK	COMM	DESCRIPTION	LENGTH	SPEC	GRADE	TEST	REMARKS	GRP	ITEM	GROSS WEIGHT EA.	DEDUCTED WEIGHT EA.	NET WEIGHT EA.	
I	12	m1a	PL	1/2 x 12	1	3	M270	50W	T		11	3	25.52		25.52
I	12	m1b	PL	1/2 x 12	1	3	M270	50W	T		11	3	25.52		25.52
I	52	m1c	PL	1/2 x 13 1/2	1	3	M270	50W	T		11	3	28.71		28.71
I	52	m1d	PL	1/2 x 13 1/2	1	3	M270	50W	T		11	3	28.71		28.71
I	40	m1f	PL	1/2 x 6 3/4	1	0 1/2	M270	50W	T		11	3	11.96		11.96
I	40	m1g	PL	1/2 x 6 3/4	1	0 1/2	M270	50W	T		11	3	11.96		11.96
I	12	m1h	PL	1/2 x 13	2	1	M270	50W	T		11	3	46.08		46.08
I	40	m1k	PL	1/2 x 13	1	10	M270	50W	T		11	3	40.55		40.55
I	76	m1m	WT	8 x 20	0	6	M270	50W			10	2	10.00		10.00

RECEIVED
 OK'D BY: *JCF* OK'D BY: _____
 JAN 30 2007
 RESUBMIT _____ APPROVED: *JCF*
 BY: *WY S* DATE: 1-31-2007

NO.	REVISION	BY	DATE

1770 Hempstead Road
 Lancaster, PA 17605-0008
 Phone 717/299-5211

HIGH STEEL STRUCTURES, INC.

A Division of High Industries, Inc.

MISCELLANEOUS JOB STANDARDS

VT. 12 (MAIN ST.) OVER THIRD BRANCH OF THE WHITE RIVER

VT. 12 STA. 15+36.00 TO STA. 17+36.00

TOWN OF RANDOLPH, ORANGE COUNTY, VT. BRIDGE NO. 42

STATE OF VERMONT

AGENCY OF TRANSPORTATION

STATE CONTRACT OR REF. NO. PROJECT NO. RANDOLPH BR 0241 (29)

CONTRACTOR: WINTERSET, INC.

IN CHARGE: BRITIGAN (IH) MADE BY: RC CS DATE: 11/6/06

CONTRACT NUMBER: VT-06215-1 DRAWING NUMBER: M1 OF M1

NOTES:
 HOLES: 1 5/8" Ø
 BOLTS: NONE
 PAINT: NONE
 FOR GENERAL SHOP NOTES, SEE DWG. GN1.