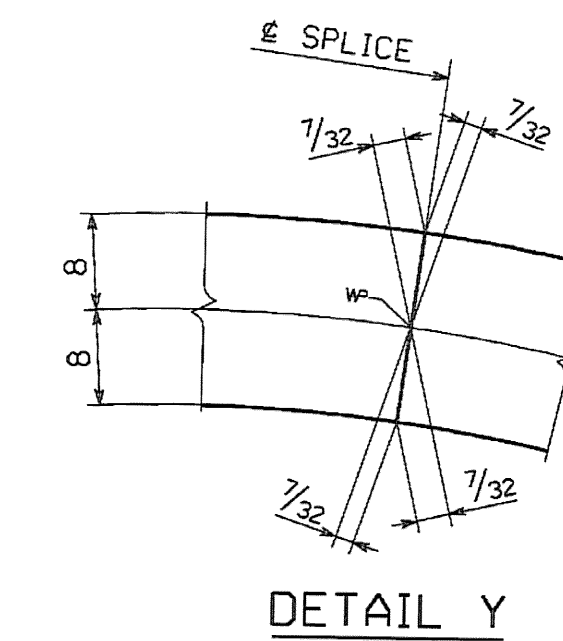
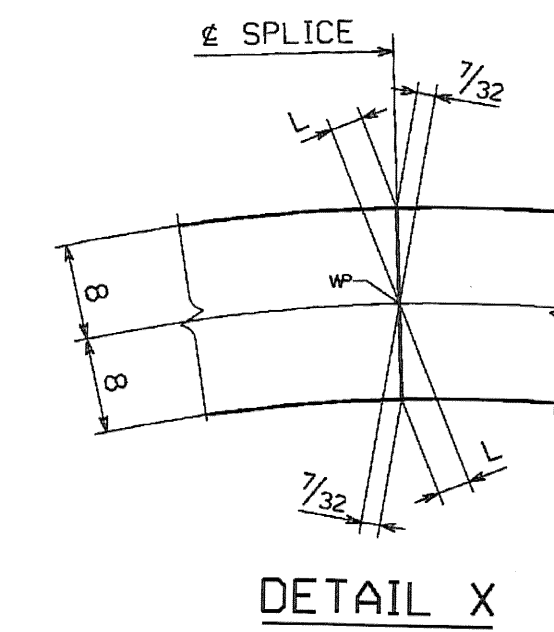
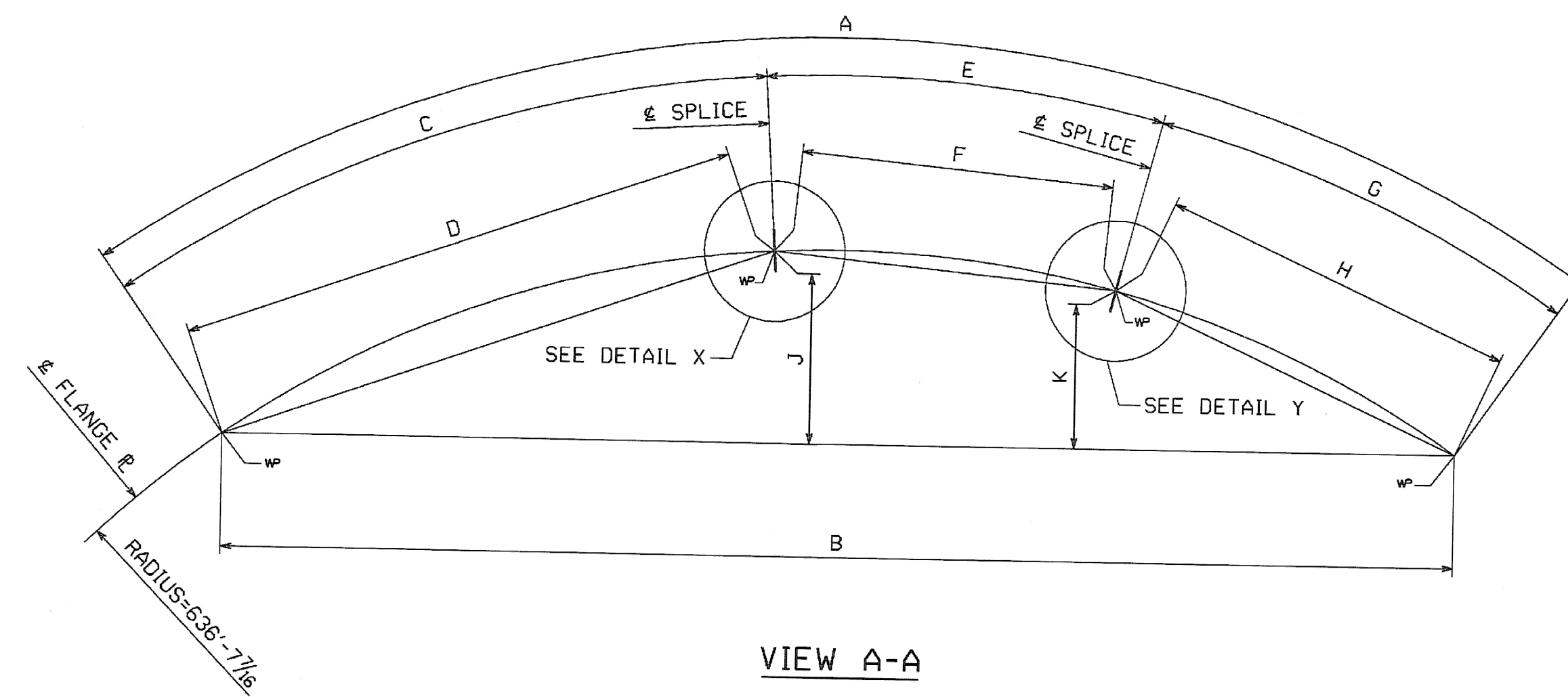
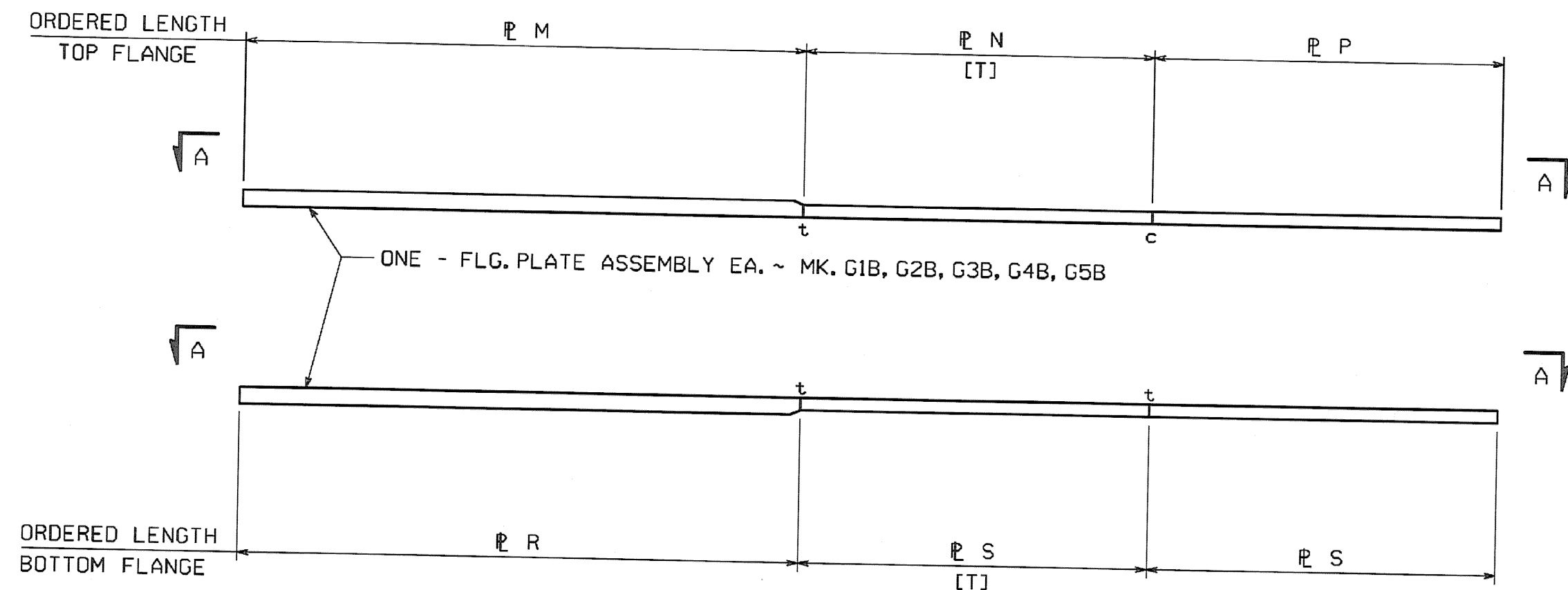


ENGLISH

FED. ROAD DIV. NO.	STATE	FED. AID PROJ. NO.
	VT	



MARK	FLANGE	A	B	C	D	E	F	G	H	J	K	L	M	N	P	R	S	T
G1B	TOP	133'-4 1/8	133'-1 1/4	59'-5	59'-4 3/4	36'-11 1/2	36'-11 7/16	36'-11 5/8	36'-11 3/16	3'-5 3/8	2'-9 9/16	3/8	2 x 16 x 59'-8 (4/1)	1 x 16 x 37'-2 (4/7)	1 x 16 x 37'-2 (4/7)	--	--	36'-11 1/2
G2B	TOP	130'-8 5/16	130'-5 3/16	57'-0 7/16	56'-11 5/16	36'-10	36'-9 1 5/16	36'-10 1/8	36'-10 1/16	3'-3 3/16	2'-8 9/16	1 1/32	2 x 16 x 57'-3 (4/2)	1 x 16 x 37'-0 (4/8)	1 x 16 x 37'-0 (4/8)	--	--	36'-10
G3B	TOP	128'-2 7/16	127'-11 7/16	54'-11 5/16	54'-11 1/8	36'-7 1/2	36'-7 7/16	36'-7 3/8	36'-7 1/4	3'-1 7/8	2'-7 7/16	1 1/32	1 1/2 x 16 x 55'-2 (4/3)	1 x 16 x 36'-9 (4/10)	1 x 16 x 36'-10 (4/9)	--	--	36'-7 1/2
G4B	TOP	126'-2 3/16	126'-0 1/8	53'-10 7/16	53'-10 1/4	36'-2	36'-1 5/16	36'-2 1/8	36'-2 1/16	3'-0 1 1/16	2'-6 1 1/16	1 1/32	1 1/2 x 16 x 54'-1 (4/4)	1 x 16 x 36'-4 (4/12)	1 x 16 x 36'-4 (4/12)	--	--	36'-2
G5B	TOP	124'-0 5/8	123'-10 5/16	52'-5 7/16	52'-5 1/4	35'-9 1/2	35'-9 7/16	35'-9 1 1/16	35'-9 3/8	2'-11 3/8	2'-5 3/4	1 1/32	1 1/2 x 16 x 52'-8 (4/5)	1 x 16 x 36'-0 (4/13)	1 x 16 x 36'-0 (4/13)	--	--	35'-9 1/2
G1B	BOTTOM	133'-4 3/8	133'-1 1 1/16	59'-5 1 1/16	59'-5 7/16	36'-11 1/2	36'-11 7/16	36'-11 5/8	36'-11 3/16	3'-5 3/8	2'-9 9/16	3/8	--	--	--	2 x 16 x 59'-8 (4/1)	1 1/2 x 16 x 37'-1 (4/6)	36'-11 1/2
G2B	BOTTOM	130'-8 3/4	130'-6	57'-0 7/8	57'-0 7/8	36'-10	36'-9 1 5/16	36'-9 7/8	36'-9 3/16	3'-3 3/16	2'-8 9/16	1 1/32	--	--	--	2 x 16 x 57'-3 (4/2)	1 1/2 x 16 x 37'-1 (4/6)	36'-10
G3B	BOTTOM	128'-2 1 3/16	128'-0 1/4	55'-0	54'-11 3/16	36'-7 1/2	36'-7 7/16	36'-7 3/8	36'-7 1/4	3'-1 5/8	2'-7 7/16	1 1/32	--	--	--	1 1/2 x 16 x 55'-2 (4/3)	1 x 16 x 36'-9 (4/10)	36'-7 1/2
G4B	BOTTOM	126'-3	126'-0 3/16	53'-11 1/8	53'-10 5/16	36'-2	36'-1 5/16	36'-1 7/8	36'-1 3/16	3'-0 3/4	2'-6 1 1/16	1 1/32	--	--	--	1 1/2 x 16 x 54'-1 (4/4)	1 x 16 x 36'-4 (4/12)	36'-2
G5B	BOTTOM	124'-1 1/8	123'-10 3/16	52'-6 3/16	52'-6	35'-9 1/2	35'-9 7/16	35'-9 1 1/16	35'-9 3/8	2'-11 3/8	2'-5 3/4	1 1/32	--	--	--	1 1/2 x 16 x 52'-8 (4/5)	1 x 16 x 36'-0 (4/13)	35'-9 1/2

**NOTES:**  
 FOR WELDING DETAILS, SEE DWG. FS1.  
 FOR OTHER NOTES, SEE DWG. FS1.

RECEIVED  
 OK'D BY: *JCF* OK'D BY: \_\_\_\_\_  
 JAN 30 2007  
 RESUBMIT: \_\_\_\_\_ APPROVED: *JCF*  
 BY: *WY* DATE: 1-31-2007

NO.	REVISION	BY	DATE

**HIGH STEEL STRUCTURES, INC.**  
 1770 Hempstead Road  
 Lancaster, PA 17605-0008  
 Phone 717/299-5211  
 A Division of High Industries, Inc.

FLANGE SPLICE DETAILS  
 VT. 12 (MAIN ST.) OVER THIRD BRANCH OF THE WHITE RIVER  
 VT. 12 STA. 15+36.00 TO STA. 17+36.00  
 TOWN OF RANDOLPH, ORANGE COUNTY, VT. BRIDGE NO. 42  
 STATE OF VERMONT  
 AGENCY OF TRANSPORTATION

STATE CONTRACT OR REF. NO. PROJECT NO. RANDOLPH BR 0241 (29)  
 CONTRACTOR: WINTERSET, INC.  
 IN CHARGE: BRITIGAN (IH) MADE BY: *SRS* CHK'D. BY: *CS* DATE: 11-8-06  
 CONTRACT NUMBER: VT-06215-1 DRAWING NUMBER: FS2 OF FS2

BY: *eshoff*  
 PLOTTED: 11/13/06 10:53:48 AM