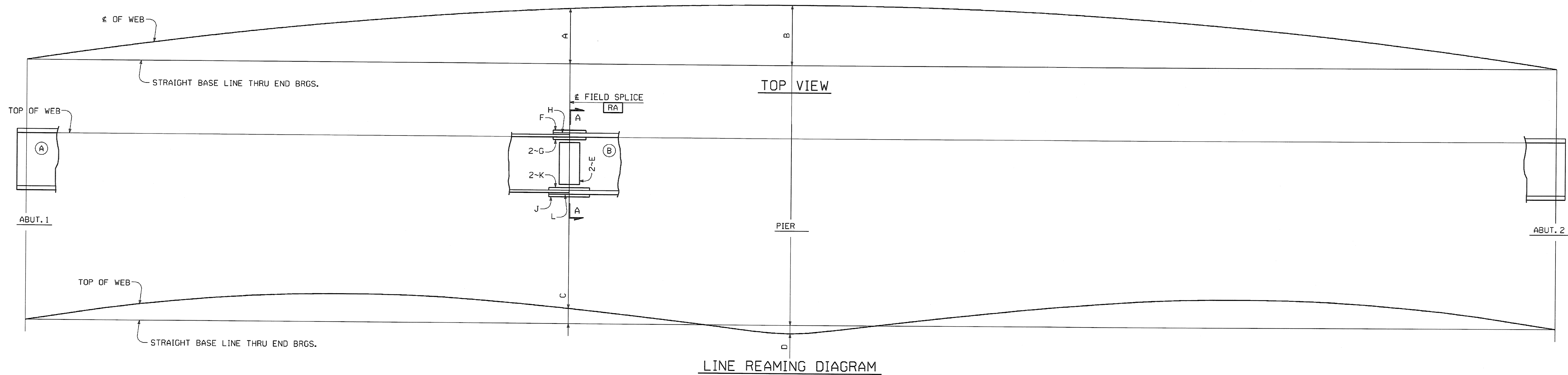


FED. ROAD DIST. NO.	STATE	FED. AID PROJ. NO.
	VT	



GDR. LINE	A	B	C	D	E	F	G	H	J	K	L
G1	7'-4 3/4	8'-0 1/16	0'-0 7/16	-0'-1 1/16	x1o	x1d	x1h	x1m	x1c	x1g	x1n
G2	7'-3 1/16	7'-11 7/16	0'-0 1/2	-0'-1 1/4	x1o	x1d	x1h	x1m	x1c	x1g	x1n
G3	7'-3	7'-10 1/16	0'-0 7/16	-0'-1 1/16	x1b	x1f	x1k	x1p	x1f	x1k	x1p
G4	7'-1 1/16	7'-8 1/16	0'-0 3/16	-0'-1 1/16	x1b	x1f	x1k	x1p	x1f	x1k	x1p
G5	7'-0 1/16	7'-7 7/16	0'-0 5/16	-0'-1 1/16	x1b	x1f	x1k	x1p	x1f	x1k	x1p

NOTES:

ALL SPLICE PLATES ARE MATCH MARKED AFTER REAMING AS SHOWN IN SECTION A-A. THE MATCH MARKS ON THE SPLICE MATERIAL CONSIST OF THE MARK OF THE GIRDER THEY ARE SHIPPED WITH AND A SUFFIX. THE MARKINGS ARE LOCATED ON THE STEEL AT THE END OF THE SPLICE MATERIAL WHICH IS ON THE GIRDER IT IS SHIPPED WITH. MATCH MARKING MARKS WILL APPEAR ON EDGES OF PLATES. THE CORRESPONDING SUFFIX (A, B, C, ETC.) IS MARKED NEAR THE SPLICE PLATE ON THE GIRDER (SEE VIEW C). FOR GIRDER MARKS, SEE THE ERECTION FRAMING PLAN DRAWINGS. HOLES MARKED [RA] ARE TO BE SUB-PUNCHED/SUB-DRILLED 1/4" UNDER SIZE AND REAMED TO FULL SIZE OR DRILLED FROM SOLID WITH CONNECTING PARTS ASSEMBLED AND MATCH MARKED. HOLES TO BE 1 1/16". (A) INDICATES SUFFIX MARK OF SHIPPING PIECE. NEGATIVE CAMBER ORDINATES INDICATE THAT TOP OF WEB IS BELOW BASE LINE.

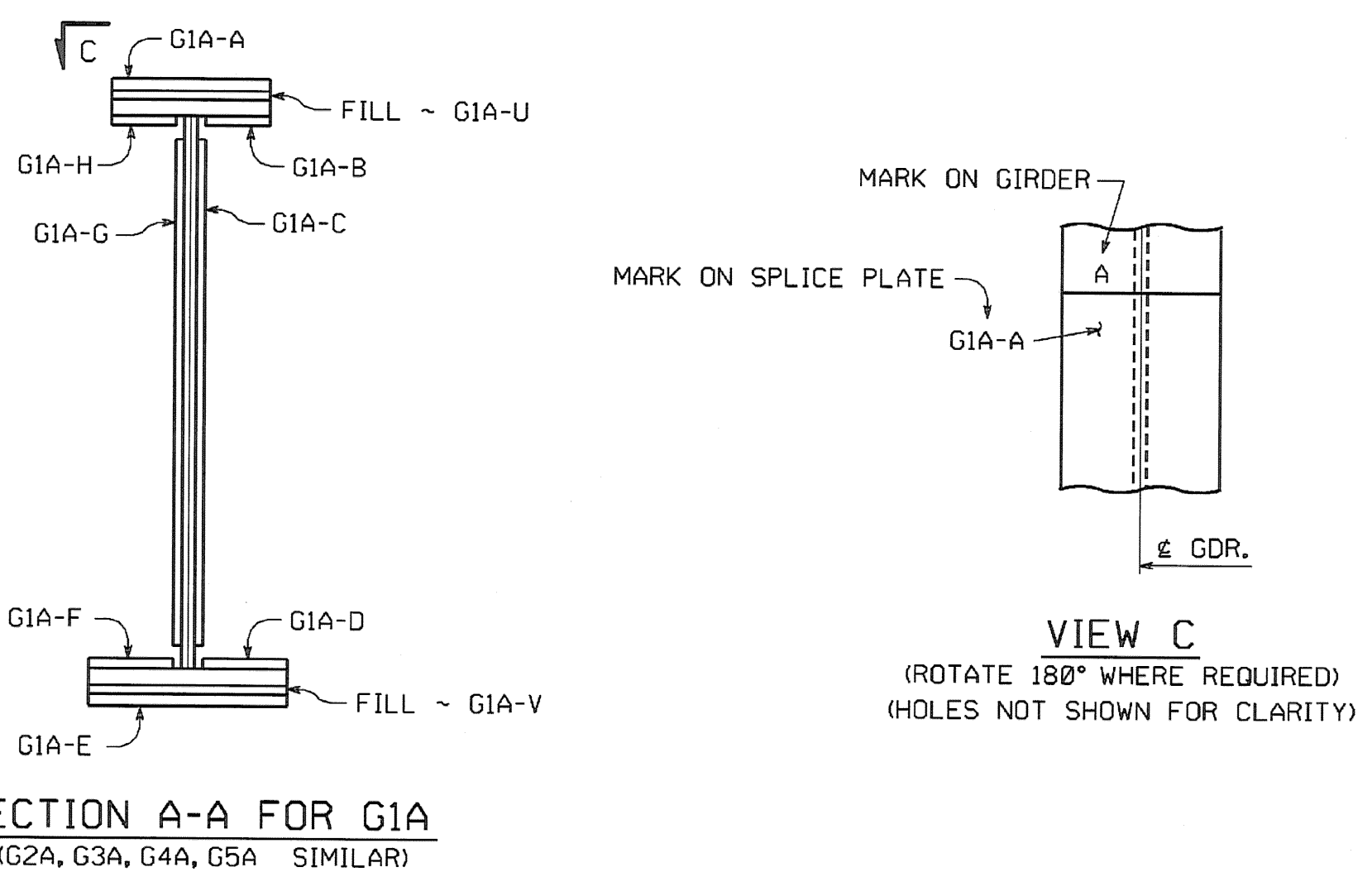
RECEIVED
 CK'D BY: *WJ* OK'D BY: _____
 JAN 30 2007
 RESUBMIT: _____ APPROVED: *WJ*
 BY: *WJ* DATE: 1-31-2007

NO.	REVISION	BY	DATE

HIGH STEEL STRUCTURES, INC.
 1770 Hempstead Road
 Lancaster, PA 17605-0008
 Phone 717/299-5211
 A Division of HSS Industries, Inc.

SHOP ASSEMBLY DIAGRAM
 VT. 12 (MAIN ST.) OVER THIRD BRANCH OF THE WHITE RIVER
 VT. 12 STA. 15+36.00 TO STA. 17+36.00
 TOWN OF RANDOLPH, ORANGE COUNTY, VT. BRIDGE NO. 42
 STATE OF VERMONT
 AGENCY OF TRANSPORTATION

STATE CONTRACT OR REF. NO. PROJECT NO. RANDOLPH BRG 0241 (29)
 CONTRACTOR: WINTERSET, INC.
 IN CHARGE: BRITIGAN (IH) MADE BY: MGK CHK'D BY: CS DATE: 11/8/06
 CONTRACT NUMBER: VT-06215-1 DRAWING NUMBER: SA1 OF SA1



BY: eahof/fer
 PLOTTED: 11/13/06 10:53:42 AM