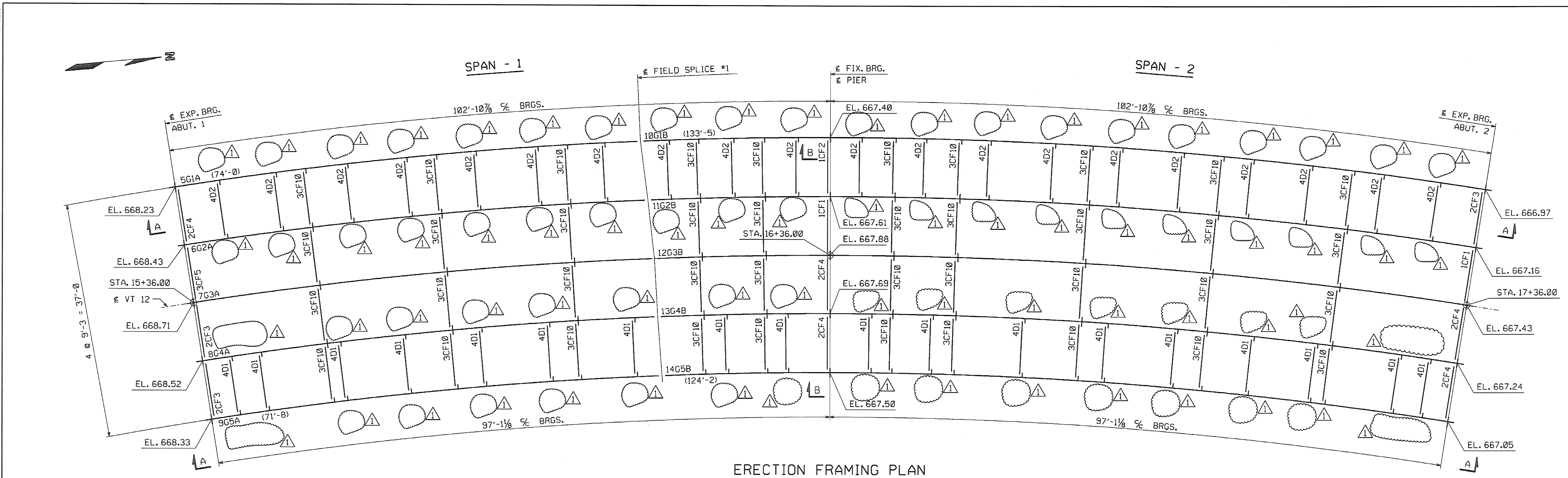


ENGLISH

FED. ROAD DIV. NO.	STATE	FED. AID PROJ. NO.
	VT	

SHIPPING WEIGHTS

SHIPPING PIECE MARK	WEIGHT EA. (LBS)
G1A	19,906
G2A	20,009
G3A	17,755
G4A	17,546
G5A	17,194
G1B	39,642
G2B	39,153
G3B	33,360
G4B	32,849
G5B	31,895



ERECTOR FRAMING PLAN

FIELD BOLT SUMMARY

(2% ADDITIONAL BOLTS ADDED + 3 EA. FOR TESTING)

215	-	7/8"	HIGH STRENGTH BOLTS x 0'-4 1/4
248	-	7/8"	HIGH STRENGTH BOLTS x 0'-3 3/4
444	-	7/8"	HIGH STRENGTH BOLTS x 0'-3
705	-	7/8"	HIGH STRENGTH BOLTS x 0'-2 1/2
982	-	7/8"	HIGH STRENGTH BOLTS x 0'-2 1/4
313	-	7/8"	HIGH STRENGTH BOLTS x 0'-2

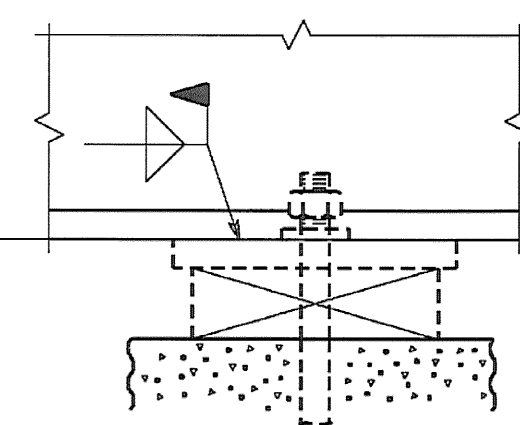
AASHTO M293 WEATHERING (RCT); ROUND & FLAT

2,907	-	STD	WASHERS FOR 7/8" BOLT
-------	---	-----	-----------------------

CONTRACTOR NOTE:

ELEVATIONS ARE GIVEN TO BOTTOM OF STEEL - DO NOT POUR TO FINAL ELEVATIONS WITHOUT VERIFICATION OF BEARING HEIGHTS AND BRIDGE SEATS.

BOTTOM OF STEEL FOR ELEV., SEE PLAN

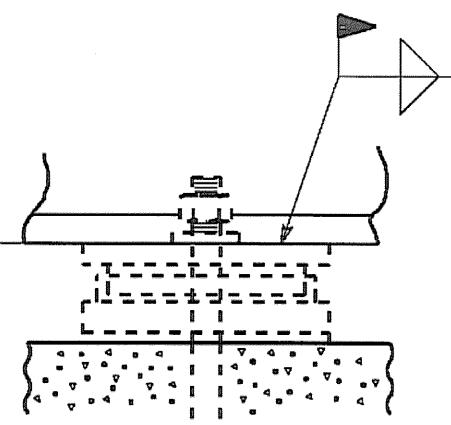


SECTION A

CONTRACTOR NOTE:

ELEVATIONS ARE GIVEN TO BOTTOM OF STEEL - DO NOT POUR TO FINAL ELEVATIONS WITHOUT VERIFICATION OF BEARING HEIGHTS AND BRIDGE SEATS.

BOTTOM OF STEEL FOR ELEV., SEE PLAN



SECTION B

NOTES:

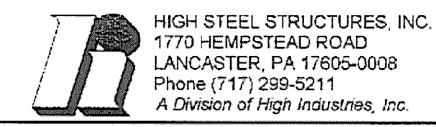
NO CREDIT WILL BE ALLOWED FOR WORK PERFORMED BY OTHERS IN REPLACING OR CORRECTING MATERIALS OR WORKMANSHIP COVERED BY THIS DRAWING UNLESS EXPRESSLY AUTHORIZED BY HIGH STEEL STRUCTURES, INC. HIGH STEEL STRUCTURES, INC. DOES NOT SUPPLY SHEAR STUDS, ROD HANGERS, HARDWARE AT UTILITIES, BEARING ASSEMBLIES INCLUDING PADS AND ANCHOR BOLTS, HOLES FOR FLEMING BRACKETS

ERECTOR NOTE: ELEVATIONS, CAMBER CHECKS AND HORIZONTAL ALIGNMENT OF FIELD SPLICES MUST BE COMPLETED PRIOR TO FINAL BOLTING. HIGH STEEL STRUCTURES IS TO BE NOTIFIED AND CONSULTED, PRIOR TO FINAL BOLTING, IF SPLICE LOCATIONS ARE NOT WITHIN ACCEPTABLE TOLERANCE. BOTH VERTICAL & HORIZONTAL CORRECTION OF ANY UNACCEPTABLE SPLICES AFTER FINAL BOLTING WILL BE AT NO COST TO HIGH STEEL STRUCTURES.

NOTICE: WEIGHTS OF MEMBERS LISTED ON THESE DRAWINGS ARE ESTIMATED WEIGHTS AND ACTUAL WEIGHTS WILL VARY. HIGH STEEL STRUCTURES, INC. WILL NOT BE RESPONSIBLE FOR ANY ERECTION PROCEDURES, SHIPPING PROCEDURES, ETC. DEVELOPED USING ESTIMATED WEIGHTS AS SHOWN. ALL DIMENSIONS ARE GIVEN HORIZONTALLY (U.N.). DIMENSIONS GIVEN THUS: (74'-0") ARE THE SHIPPING LENGTHS OUT TO OUT OF FASCIA GIRDERS. THE SHIPPING MARKS SHOWN CONSIST OF THE PREFIX INDICATING THE SHEET NUMBER UPON WHICH THE PIECE IS DETAILED ALONG WITH THE SHIPPING PIECE MARK.

ERECTOR NOTE: ALL BOLTS MUST BE LOCATED IN ACCORDANCE WITH THE LIST OF FIELD CONNECTIONS. HIGH STEEL STRUCTURES WILL NOT BE RESPONSIBLE FOR FURNISHING ADDITIONAL BOLTS OR FOR ANY OTHER RELATED COSTS OR DAMAGES RESULTING FROM IMPROPER LOCATION OF BOLTS. ALL FIELD BOLTS THRU WEB OF FASCIA GIRDERS ARE TO HAVE HEADS ON OUTSIDE OF WEB. ALL FIELD BOLTS THRU BOTTOM FLANGE ARE TO HAVE HEADS UP. (RCT) INDICATES ROTATIONAL CAPACITY TESTED BOLTS. DO NOT MIX NUTS, BOLTS AND WASHERS FROM DIFFERENT CONTAINERS UNLESS ALL NUTS, BOLTS AND WASHERS HAVE THE SAME LOT NUMBER. ANCHOR BOLTS MUST BE SET BEFORE CROSSFRAMES AT BEARINGS ARE ERECTED. AND HEIGHTS MUST BE CHECKED. SEE DRAWING 'S4' FOR MATCH MARKING SYSTEM. WORK THIS DRAWING WITH DRAWING E2.

HIGH STEEL STRUCTURES, INC.



HIGH STEEL STRUCTURES, INC.
1770 HEMPESTAD ROAD
LANCASTER, PA 17606-0008
Phone (717) 299-5211
A Division of High Industries, Inc.

LIST OF FIELD CONNECTIONS

LINE	ACTUAL NUMBER REQ'D	BOLT DIAM.	BOLT LENGTH	BOLTS PER CONN.	NO. OF CONN.	GRP.	THICKNESS OF PIECES JOINED			PIECES CONNECTED AND REMARKS
1	252	7/8	3	84	3	1 5/8	1/2	5/8	1/2	WEB SPLICE @ FS1 G3-G5
2	180	7/8	3	90	2	1 5/8	1/2	5/8	1/2	WEB SPLICE @ FS1 G1-G2
3	120	7/8	3 3/4	40	3	2 1/2	1/2	1 1/2	1/2	TOP FLANGE SPLICE @ FS1 G3-G5
4	96	7/8	4 1/4	48	2	3	1/2	2	1/2	TOP FLANGE SPLICE @ FS1 G1-G2
5	120	7/8	3 3/4	40	3	2 1/2	1/2	1 1/2	1/2	BOTTOM FLANGE SPLICE @ FS1 G3-G5
6	112	7/8	4 1/4	56	2	3	1/2	2	1/2	BOTTOM FLANGE SPLICE @ FS1 G1-G2
7	384	7/8	2 1/2	16	24	1 1/4	3/4	1/2		END & PIER CROSSFRAMES TO BRG. STIFF.
8	960	7/8	2 1/4	12	80	1	1/2	1/2		INT. CROSSFRAMES TO CONN. PL.
9	304	7/8	2 1/2	4	76	1 1/8	1/2	5/8		UTILITY CONN. WT TO GIRDER WEB
10	304	7/8	2	4	76	9/16	5/16	1/4		UTILITY CONN. WT TO UTILITY SUPPORT
11										

RECEIVED

CHK'D BY: JLF OK'D BY: DATE: JAN 30 2007

RESUBMIT APPROVE: JLF BY: WY DATE: 1-31-2007

1	REMOVE FIELD DRILL AND CHECK ANCHOR BOLT HEIGHTS NOTES	MF	1-19-07
	REVISION	BY	DATE

1770 Hempestad Road
Lancaster, PA 17605-0008
Phone 717/299-5211
HIGH STEEL STRUCTURES, INC.
A Division of High Industries, Inc.

ERECTOR FRAMING PLAN			
VT. 12 (MAIN ST.) OVER THIRD BRANCH OF THE WHITE RIVER			
VT. 12 STA. 15+36.00 TO STA. 17+36.00			
TOWN OF RANDOLPH, ORANGE COUNTY, VT. BRIDGE NO. 42			
STATE OF VERMONT			
AGENCY OF TRANSPORTATION			
STATE CONTRACT OR REF. NO. PROJECT NO. RANDOLPH BRIDGE 0241 (29)			
CONTRACTOR WINTERSET, INC.			
IN CHARGE: BRITIGAN (IH)	MADE BY: ERS	CHK'D BY: CS	DATE: 11-13-06
CONTRACT NUMBER: VT-06215-1	DRAWING NUMBER: E1 OF E2		

Plotted: 01/22/07 02:36:36 PM By: escaley