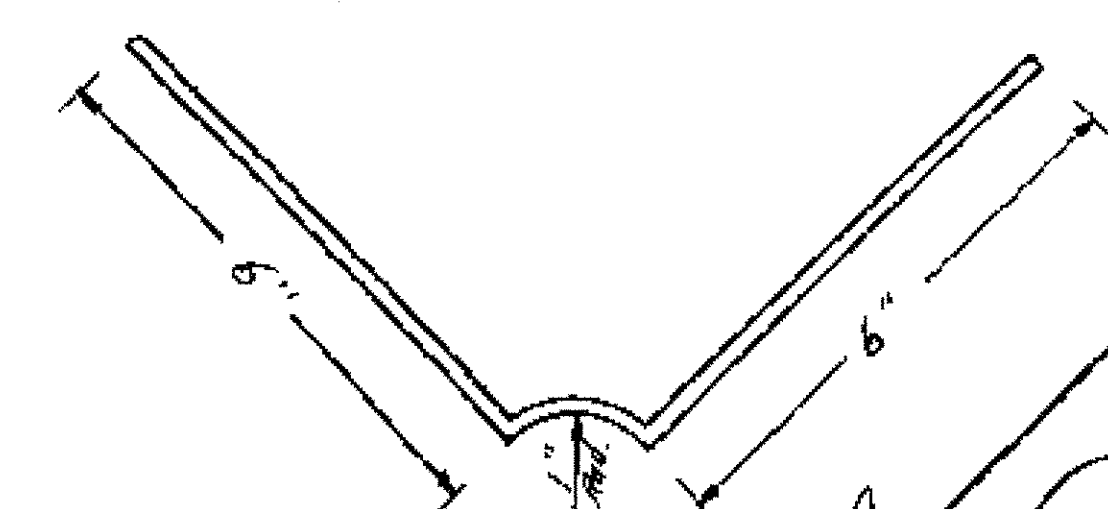
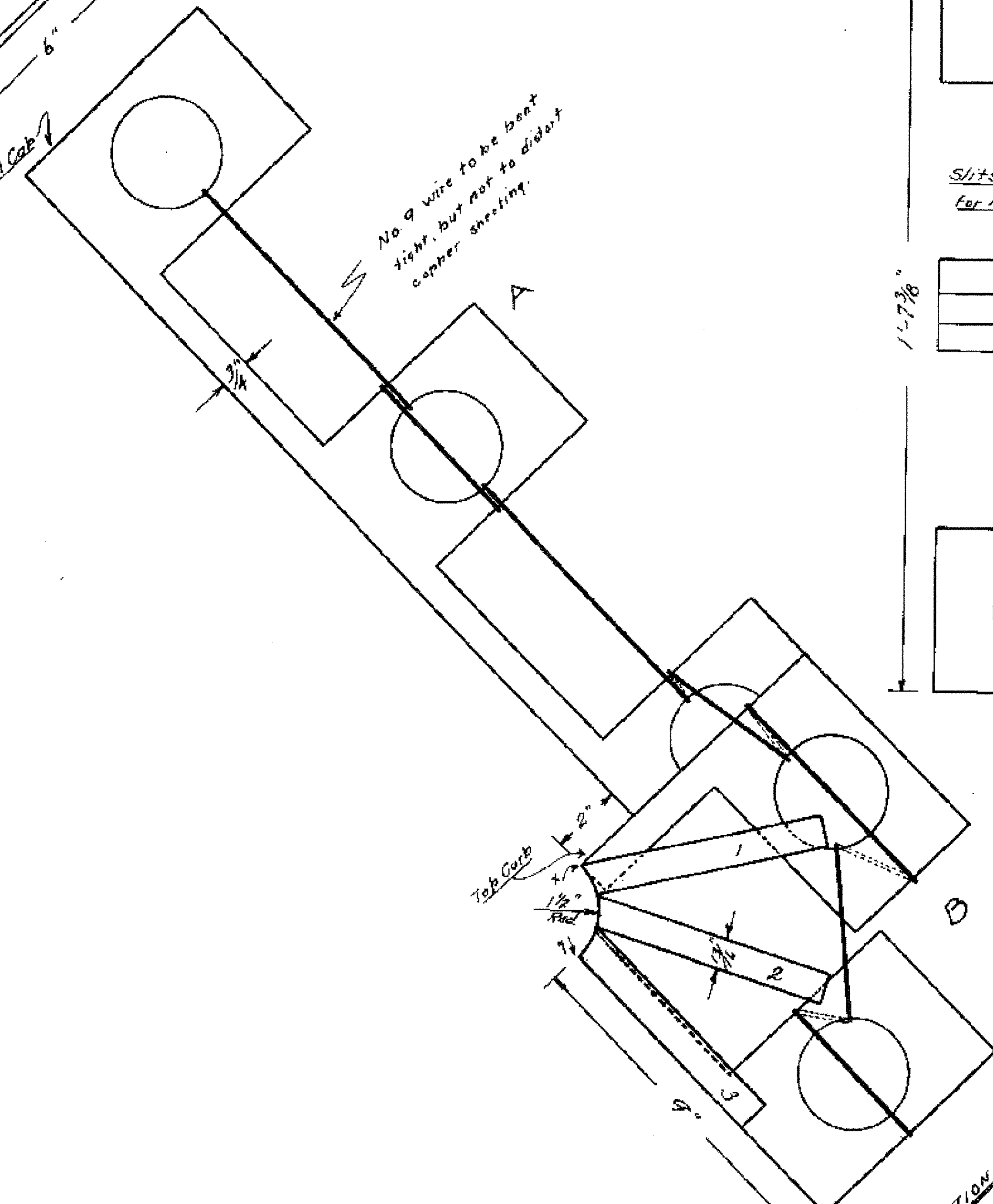


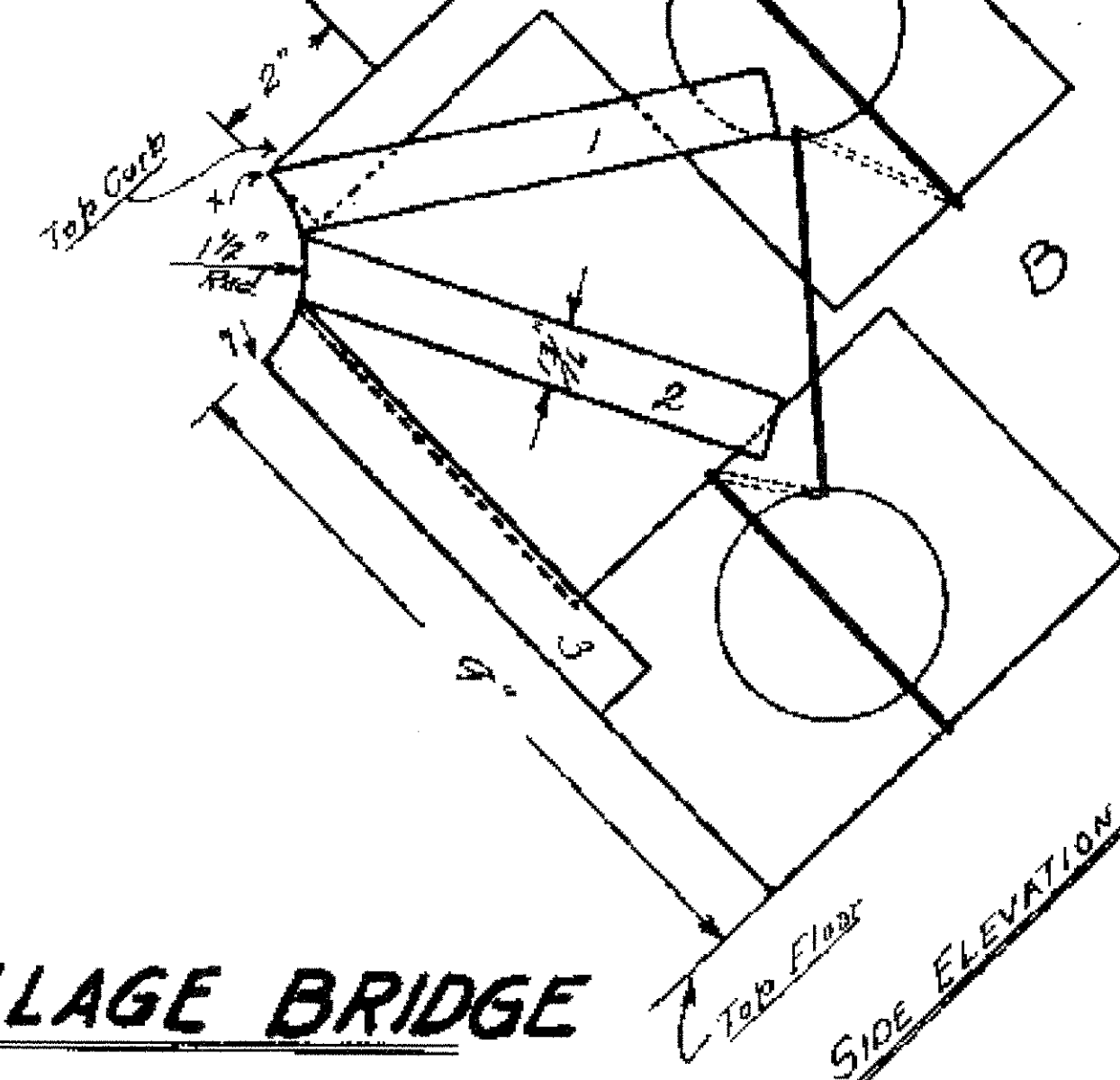
A



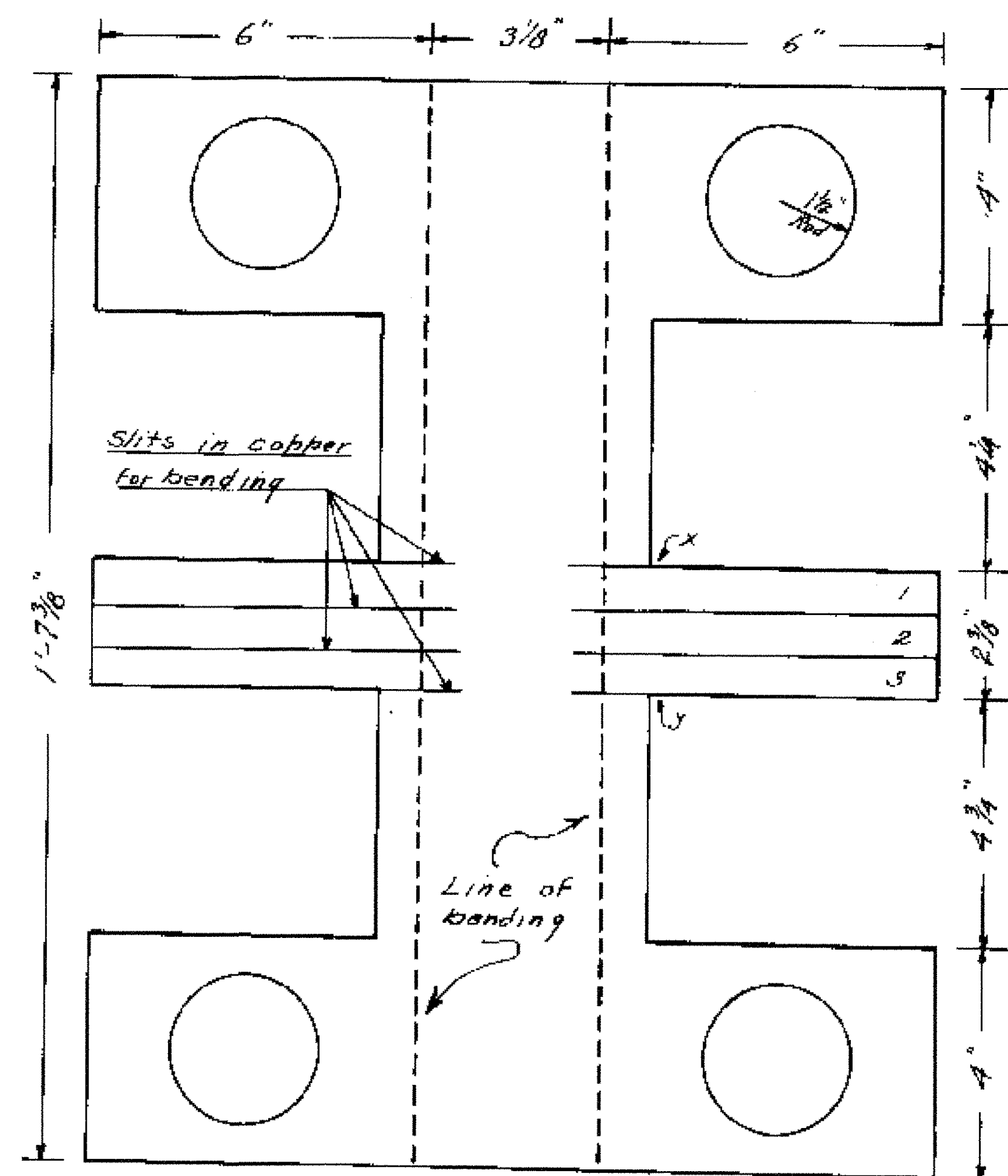
Bottom Post Cap



No #9 wire to be bent tight, but not to distort copper sheathing.



SIDE ELEVATION ASSEMBLED



B

(SHOWN UNGENT)

RANDOLPH VILLAGE BRIDGE
DETAIL OF COPPER FLASHING

DESIGNED BY: H.L. SARGENT
 DETAILED & DRAWN BY: W.B. McALLISTER 8-30-28
 TRACED BY: W.B.M. 8-31-28
 CHECKED BY: