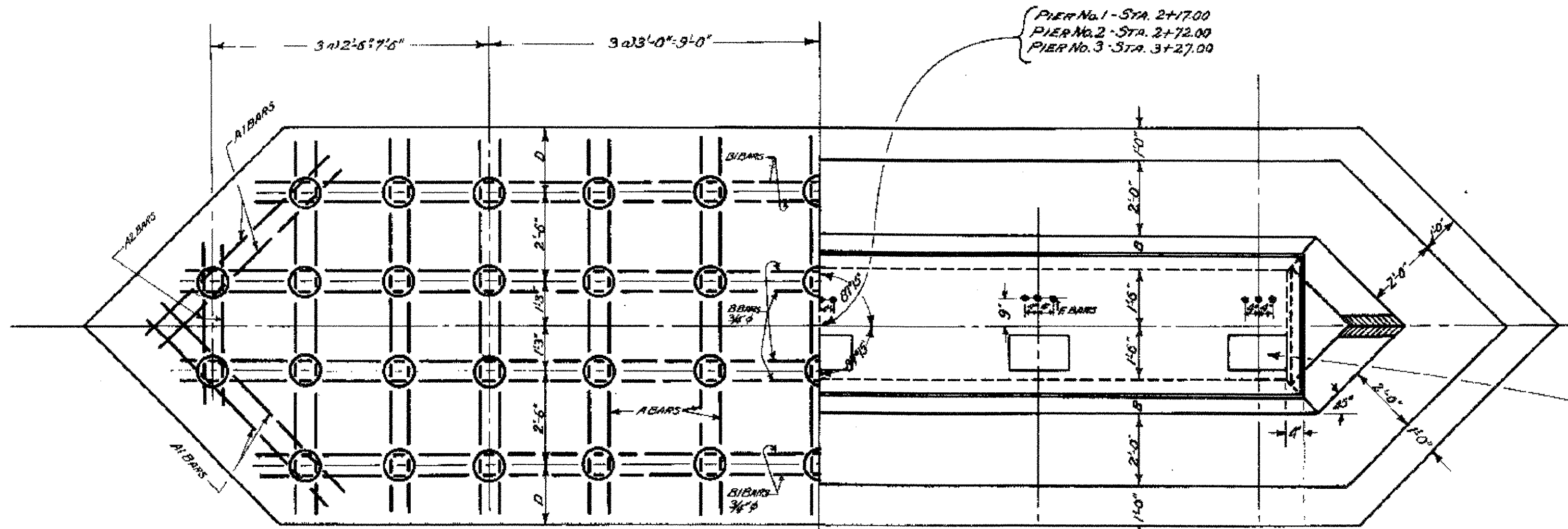


ALL STEEL TO BE DEFORMED BARS (EXCEPT AS NOTED) REINFORCING STEEL TO CONFORM TO STANDARD SPECIFICATIONS FOR BILLET STEEL CONCRETE REINFORCEMENT BARS OF THE AMERICAN SOCIETY FOR TESTING MATERIALS, SERIAL DESIGNATION A85-18, STRUCTURAL OR INTERMEDIATE GRADE.

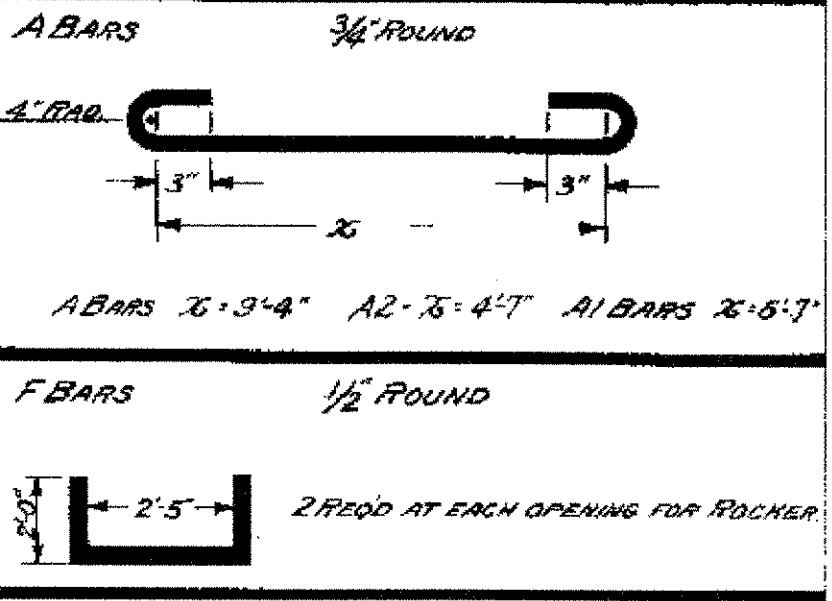
HALF FOOTING PLAN - SYMMETRICAL ABOUT #6 HALF PLAN - SYMMETRICAL ABOUT #6



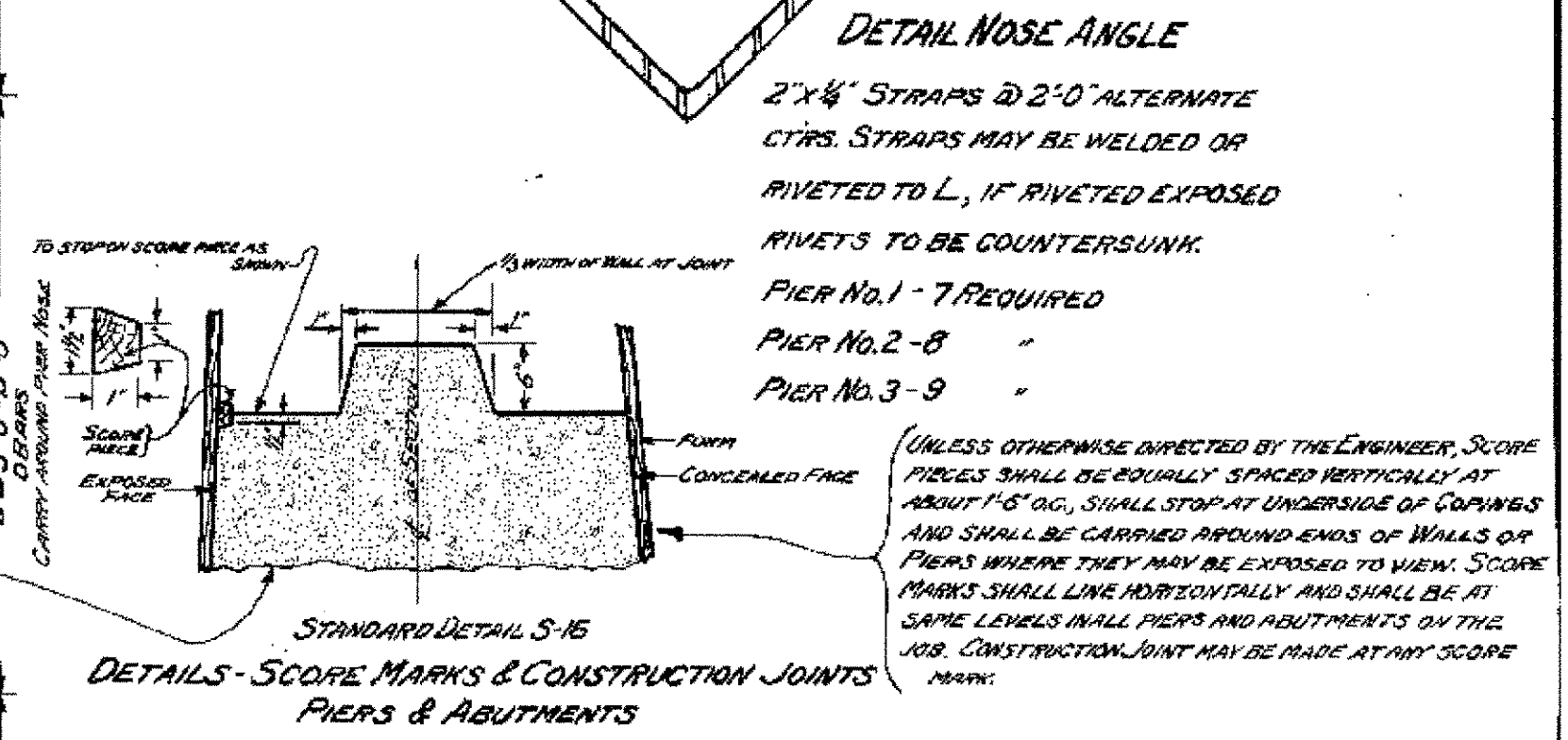
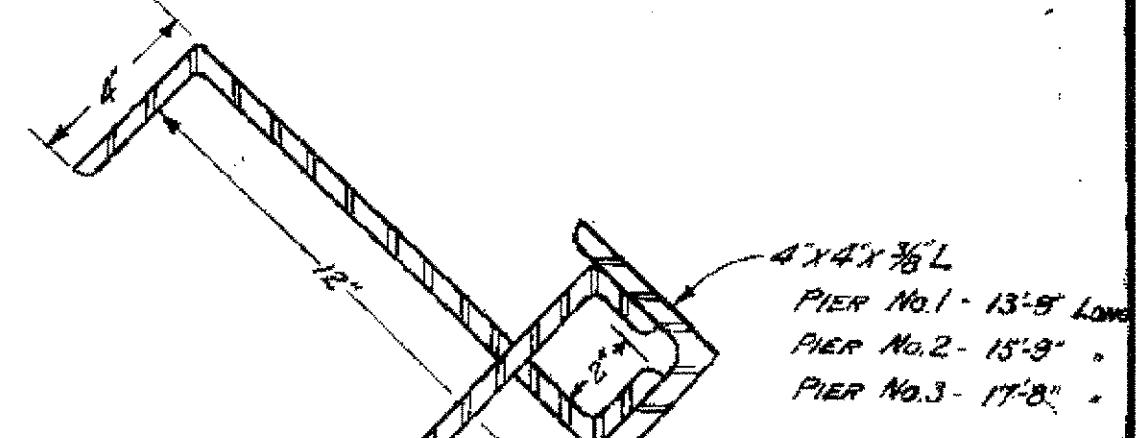
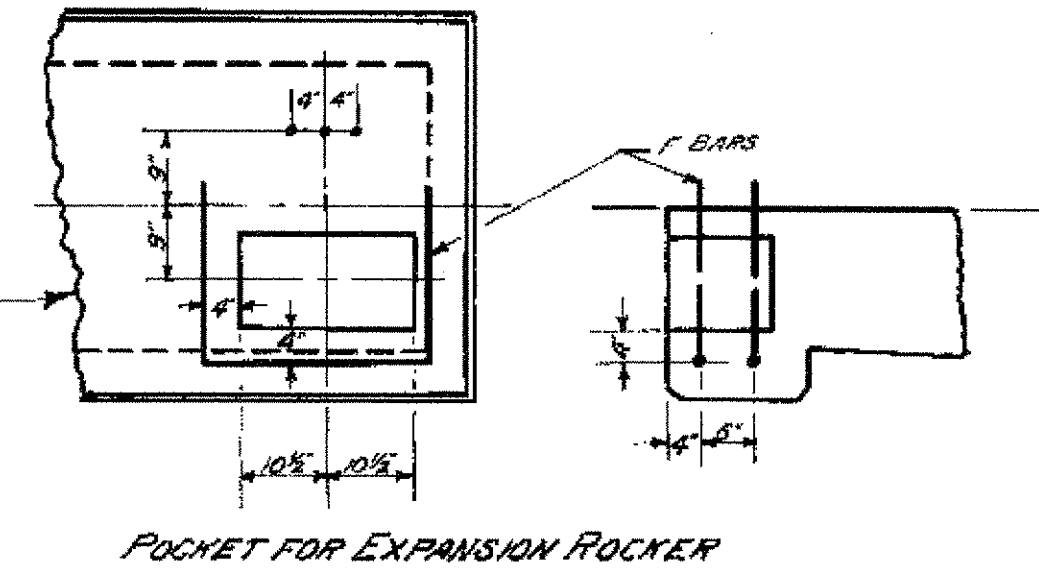
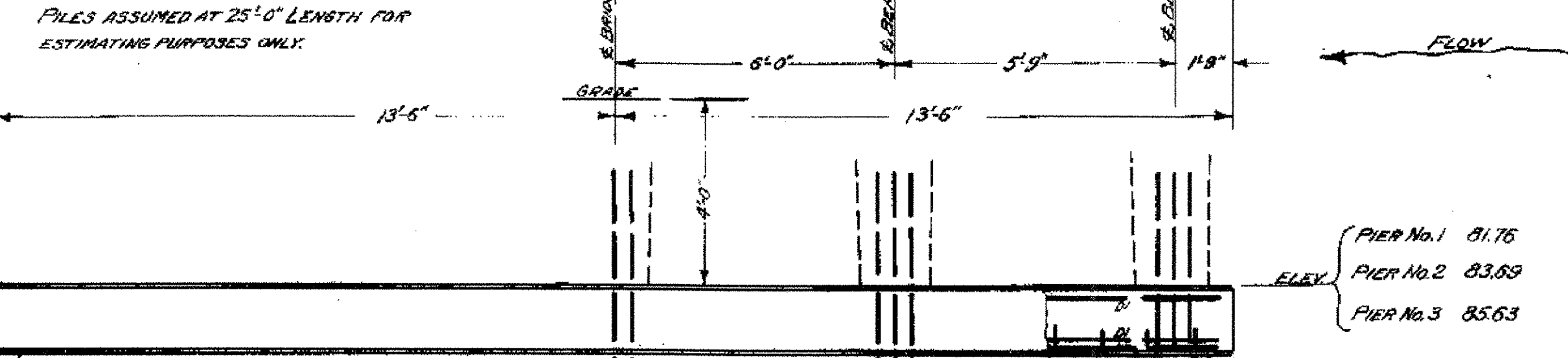
	BRIDGE SEAT ELEV.	A	B	C	D	STRUCTURE EXCAVATION CU.YDS.	1-2 1/2 CONCRETE CU.YDS.	REINFORCING STEEL LBS.
PIER No. 1	81.76	19'-3"	9 3/4"	5'-3 3/4"	1'-6 3/4"	50	143	1642
PIER No. 2	83.69	21'-2 1/2"	10 7/8"	5'-4 3/4"	1'-7 3/4"	51	148	1665
PIER No. 3	85.63	23'-12"	11 1/2"	5'-5 1/2"	1'-8 1/2"	53	152	1697

FLOOD HIGH WATER ELEV. 74.80
 NORMAL " " " 70.22
 EXTREME LOW " " " 60.82

REINFORCING STEEL DETAILS



FILES: ALL PILES SHALL BE DRIVEN TO A BEARING CAPACITY OF 15 TONS EACH.
 ALL CONCRETE IN THESE PIERS TO BE CLASS B (1-2 1/2-5)
 ALL WORK AND MATERIALS SHALL CONFORM TO STANDARD ROAD AND BRIDGE SPECIFICATIONS OF THE VERMONT DEPT. OF HIGHWAYS 1926.
 NOSE GUARD ON PIER TO BE GIVEN ONE SLEEV COAT OF RED LEAD AND OIL, ONE FIELD COAT OF RED LEAD AND OIL AND ONE FIELD COAT OF GRAPHITE PAINT.
 WORK AND MATERIAL FOR FURNISHING AND PLACING NOSE GUARD TO BE PAID FOR UNDER THE UNIT PRICE BID FOR REINFORCING STEEL.
 IF JETTING IS NECESSARY TWO WATER JETS SHOULD BE USED WITH A WATER PRESSURE OF AT LEAST 350 TO 200 LBS. PER SQUARE INCH. PUMPTORE OF PISTON TYPE WITH A 6" DIAMETER INTAKE PIPE AND A 4" DIAMETER OUTLET PIPE. THE JET PIPE TO BE ABOUT 2" IN DIAMETER. NOZZLE TO BE CIRCULAR IN SECTION OF 1/2" TO 3/4" IN DIAMETER.
 FILE SHOES AS PER SKETCH, SHEET NO. 9, TO BE USED AS DIRECTED BY THE ENGINEER.
 UNIT PRICE BID FOR WOODEN PILES SHALL INCLUDE JETTING IF NECESSARY AND FURNISHING AND PLACING FILE SHOES.



PIER DETAILS
 VILLAGE BRIDGE
 RANDOLPH, VT.

TOTAL 3 PIERS

STRUCTURE EXCAVATION	154 CU. YDS.
STRUCTURE EXCAVATION (REMOVAL OF OLD ABUTMENTS & WINGS)	580 CU. YDS.
1-2 1/2-5 CONCRETE	443 CU. YDS.
REINFORCING STEEL	4994 LBS.
TIMBER PILES	3600 FT.

Surveyed by A. Doe
 Designed by H. P. Redigan
 Drawn by H. P. Redigan
 Traced by J. C. Greenup
 Checked by R. W. Mansett
 Series F No. 67A(12) Filed 7-33-44
 Sheet 7 of 11 Sheets

HALF END ELEVATION HALF SECTION