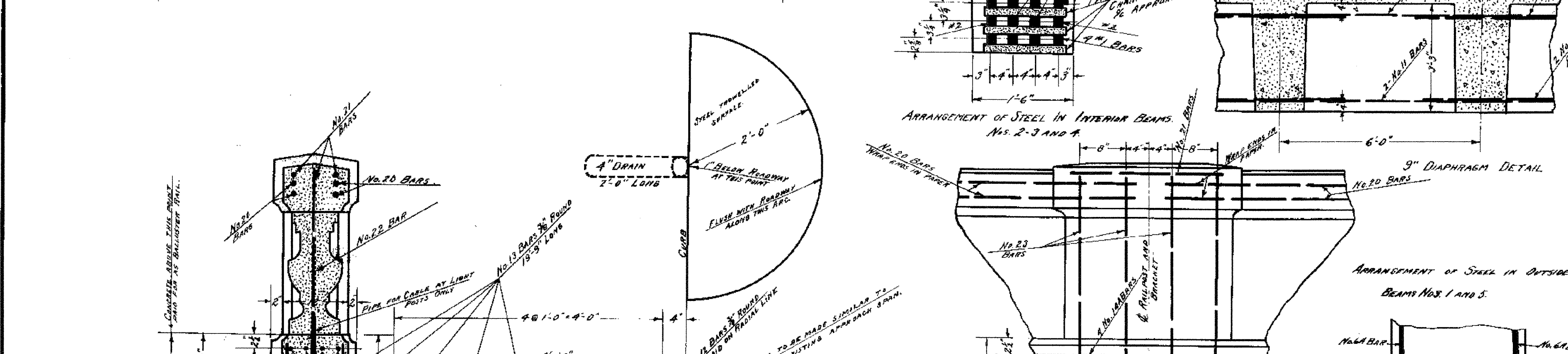
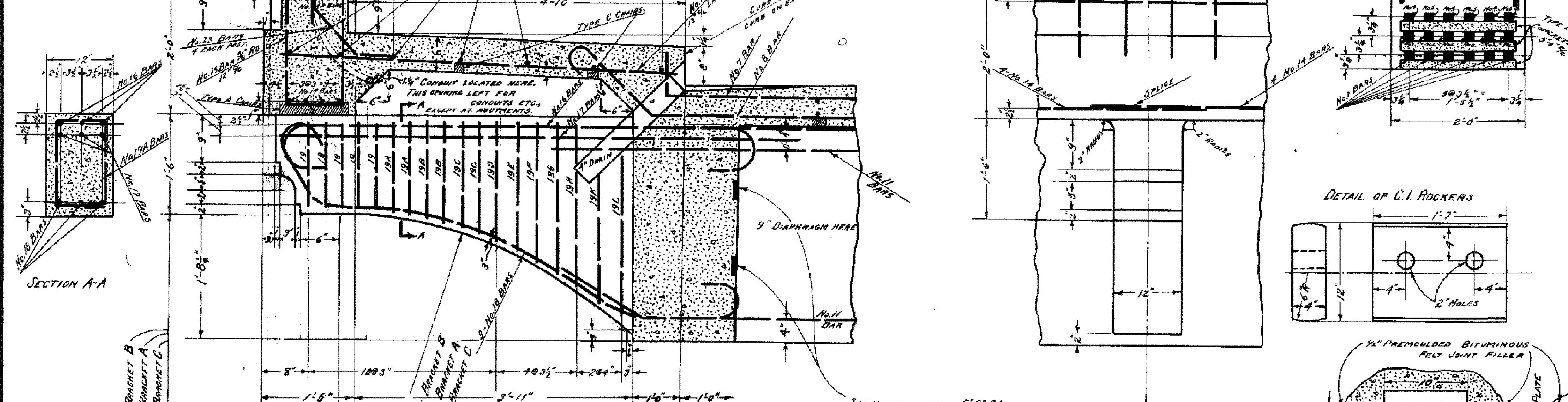


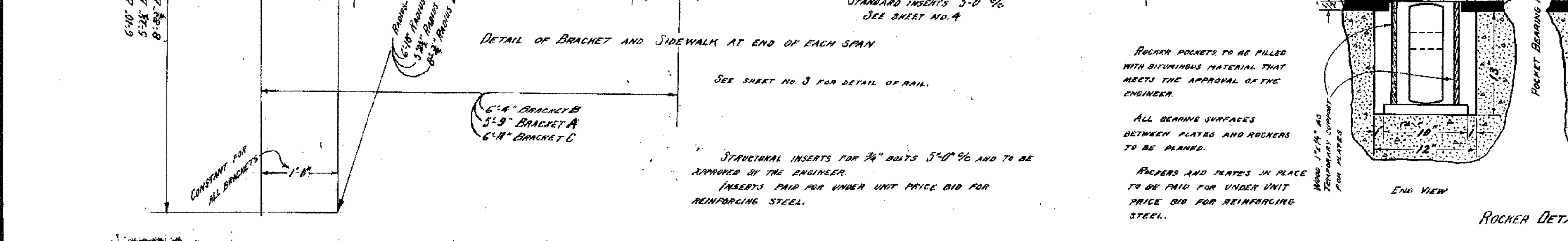
Beam	L	X/L	BAR No. 1	BAR No. 2	BAR No. 3	BAR No. 4	BAR No. 5
No. 1	56'-13"	28'-0"	A 54'-10"	B 1'-08"	B 1'-08"	D 1'-08"	D 1'-08"
No. 2	55'-6"	27'-9"	A 54'-8"	B 1'-08"	B 1'-08"	D 1'-08"	D 1'-08"
No. 3	54'-11"	27'-5"	A 53'-10"	B 1'-08"	B 1'-08"	D 1'-08"	D 1'-08"
No. 4	54'-4"	27'-2"	A 53'-2"	B 1'-08"	B 1'-08"	D 1'-08"	D 1'-08"
No. 5	53'-9"	26'-10"	A 52'-8"	B 1'-08"	B 1'-08"	D 1'-08"	D 1'-08"



BAR No.	Length	Quantity	Notes
No. 7 BAR	24'-6"	1	3/8" ROUND
No. 8 BAR	25'-0"	1	3/8" ROUND
No. 9 BAR	25'-0"	1	3/8" ROUND
No. 10 BAR	10'-0"	1	1/2" ROUND
No. 11 BAR	10'-0"	1	3/8" ROUND
No. 12	5'-9" LONG	1	3/8" ROUND
No. 13	19'-9" LONG	1	3/8" ROUND
No. 14 BARS	22'-6"	16	3/8" ROUND
No. 14 A BARS	8'-0"	1	3/8" ROUND
No. 15 BARS	4'-8"	1	3/8" ROUND
No. 16 BARS	9'-1"	1	3/8" ROUND
No. 17 BARS	8'-0"	1	3/8" ROUND
No. 18 BARS	9'-7"	1	3/8" ROUND



BAR No.	Length	Quantity	Notes
No. 19 BARS	2'-8"	16	3/8" ROUND
No. 20 BARS	2'-8"	16	3/8" ROUND
No. 21 BAR	2'-0" LONG	1	3/8" ROUND
No. 22 BAR	3'-2" LONG	1	3/8" ROUND
No. 23 BAR	3'-0"	1	3/8" ROUND
No. 24 BAR	2'-6"	1	1/2" ROUND
No. 25 BAR	5'-3"	1	3/8" ROUND
No. 26 BAR	5'-0"	1	3/8" ROUND



STRUCTURAL DETAILS
VILLAGE BRIDGE
RANDOLPH, VT.

Surveyed by DOR
 Designed by RADIGAN
 Drawn by RADIGAN
 Traced by BARRETT
 Checked by X. W. MERRILL
 Series F No. 67A(1)20 Filed 7-33-44
 Sheet 5 of 11 Sheets