

DETAILS OF EXPANSION IN POSTS ARE SHOWN ON SHEET NO. 6

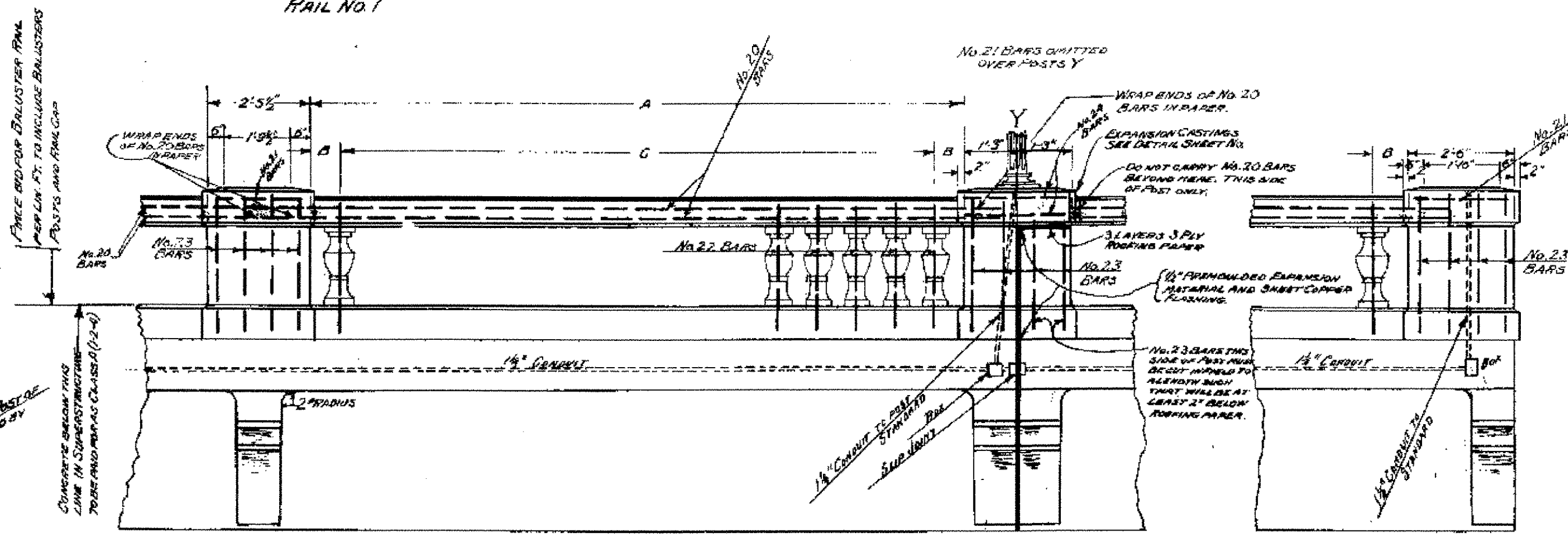
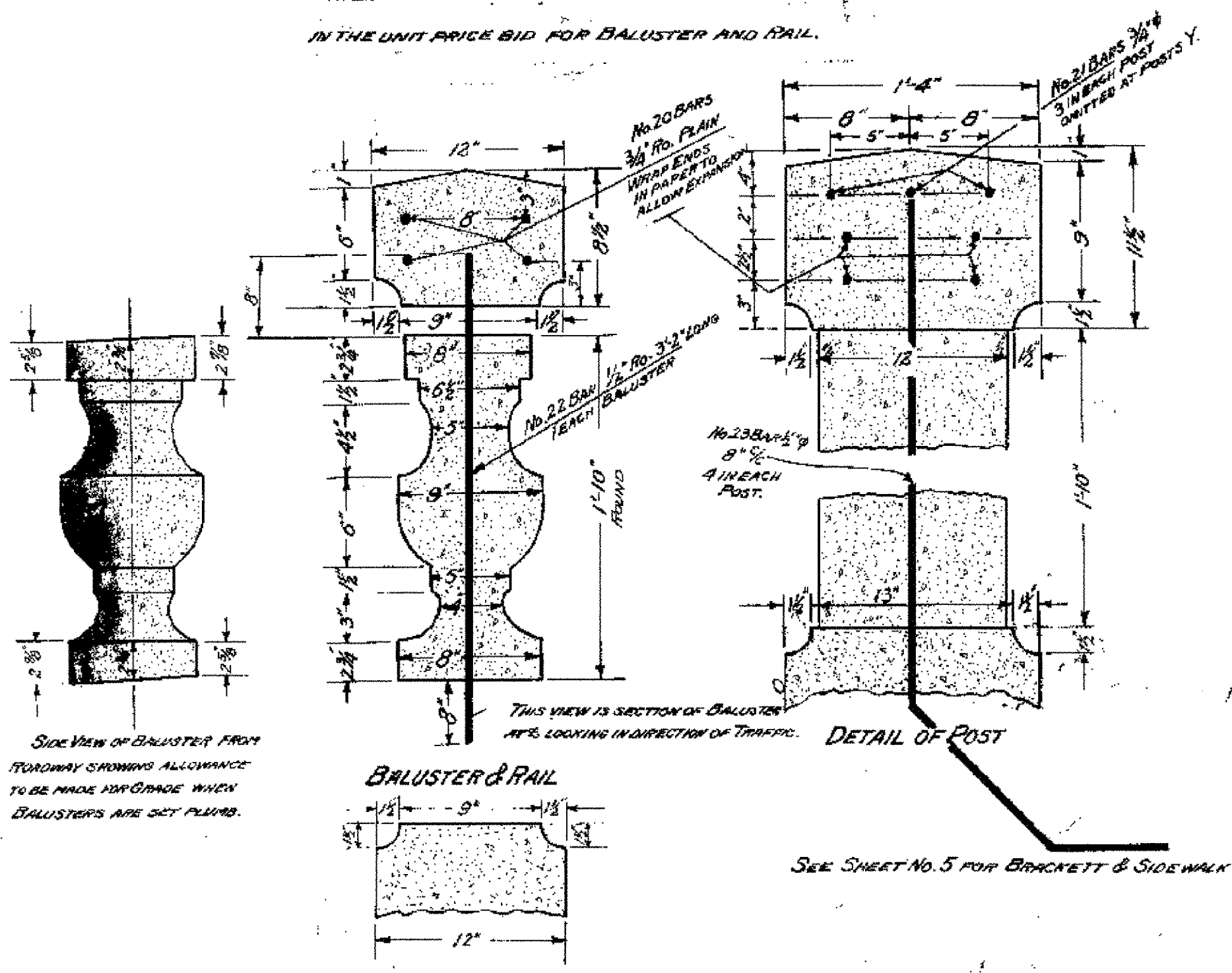
COST OF FURNISHING AND PLACING 1/2" PREMOULDED EXPANSION MATERIAL IN SUPERSTRUCTURE AS REQUIRED SHALL BE INCLUDED IN UNIT PRICE BID FOR CLASS A 1-2-4 CONCRETE

COST OF FURNISHING AND PLACING 1/2" PREMOULDED EXPANSION MATERIAL & SHEET COPPER FLASHING IN RAILS TO BE INCLUDED IN THE UNIT PRICE BID FOR BALUSTER AND RAIL.

POSTS AND BALUSTERS TO BE PLACED PLUMB AND NOT PERPENDICULAR TO GRADE.

BALUSTERS TO BE A 1/2 MIX.

POSTS AND RAIL CAP TO BE CLASS A-A (1-1 1/2-3)



LOCATION	RAIL No.	A	B	C
SPANS 2 & 3	1	16'-9"	8 3/4"	15'-0 1/2" - 15'-0"
SPANS 2 & 3	2	12'-4"	8"	14'-0 1/2" - 14'-0"
SPANS 1 & 4	1	15'-0"	9 3/4"	13'-0 1/2" - 13'-0"
SPANS 1 & 4	2	14'-11"	9 3/4"	12'-0 1/2" - 12'-0"

LAMP STANDARD DETAILS:

ONE LIGHT REQUIRED (110 VOLTS 100 WATTS) GLOBE 15" X 8"

SIZE OF BASE AT GROUND LINE - 11" SQUARE

DIAMETER OF FLUTED SHAFT - 5" TOP - 8" BOTTOM

BASE, SHAFT AND CAPITAL TO BE SEPARATE UNITS

BASE AND CAPITAL TO BE BEST GRADE OF TOUGH GREY FOUNDRY CAST IRON

SHAFTS TO BE 2 PLY OF NO. 22 U.S. GAUGE COPPER BEARING STEEL, LOCK SEAMED, DIE FLUTED AND PRESSED FIRMLY TOGETHER, NO SOLDER OR RIVETS TO BE USED.

10 COMPLETE STANDARDS REQUIRED

COMPANY FURNISHING LIGHT STANDARDS SHALL PROVIDE ANCHOR BOLT PLAN

ANCHOR BOLTS FOR LIGHT STANDARDS SHALL BE PLACED IN POST FORMS BEFORE CONCRETE IS DEPOSITED.

LUMP SUM BID FOR LAMP POSTS SHALL COVER THE COMPLETE COST OF LABOR AND MATERIALS AND FOR THE INSTALLATION OF THE FOLLOWING LIGHTING SYSTEM.

10 COMPLETE STANDARDS, CONDUITS, WIRING AND ALL INCIDENTALS NECESSARY FOR THE COMPLETE LIGHTING OF THE BRIDGE, BUT NOT TO INCLUDE WIRING FROM THE INLET OF THE BRIDGE TO THE POLE LINE. ALL WORK AND MATERIALS EXTENDING INTO THE LIGHTING SYSTEM / INSTALLATION FOR THE BRIDGE SHALL BE STANDARD WORK AND MATERIALS REQUIRED FOR THIS CLASS OF WORK AND SHALL BE PERFORMED IN SUCH A MANNER AS TO CONFORM TO THE CODE OF THE NATIONAL BOARD OF FIRE UNDERWRITERS.

LAMP STANDARDS TO RECEIVE:

1. FIELD COAT OF APPROVED RED LEAD & OIL

1. FIELD COAT OF STANLEY WHITE GUARD PAINT, TINTED TO GIVE ANY COLOR SATISFACTORY TO THE ENGINEER

IF LIGHT STANDARDS ON PRESENT BRIDGE ARE IN GOOD CONDITION THEY MAY BE USED BY THE CONTRACTOR AND ADDITIONAL STANDARDS REQUIRED MUST BE SIMILAR

2. OF LAMP POSTS TO BE ERECTED BY B. OF RAIL POSTS.

DETAILS FOR CONNECTIONS OF LAMP POSTS TO RAIL POSTS SHALL ALLOW FOR EXPANSION IN RAIL. CONTRACTOR WILL BE REQUIRED TO SUBMIT DETAIL PLANS OF LAMP BASE FOR APPROVAL BY ENGINEER.

GENERAL NOTES:

ALL CONCRETE IN SUPERSTRUCTURE TO BE CLASS A, 1-2-4 CONCRETE. (EXCEPT AS NOTED)

ALL WORK AND MATERIAL SHALL CONFORM TO THE STANDARD ROAD AND BRIDGE SPECIFICATIONS OF THE VERMONT DEPARTMENT OF HIGHWAYS 1925.

SUPERSTRUCTURE DETAILS

VILLAGE BRIDGE

RANDOLPH, VT.

SUPERSTRUCTURE

1-2-4 (CLASS A) CONCRETE 450 Cu. Yds.

REINFORCING STEEL 14,445 LBS.

LAMP POSTS (WIRED COMPLETE) 10 RECD

BALUSTRADE RAIL 441 LM. FT.

Surveyed by Doe

Designed by H.P. Robinson

Drawn by H.P. Robinson

Traced by R.C. Brown Jr.

Checked by H.W. Marrett

Series F No. 67A (R) Filed 7-33-44

Sheet 3 of 11 Sheets