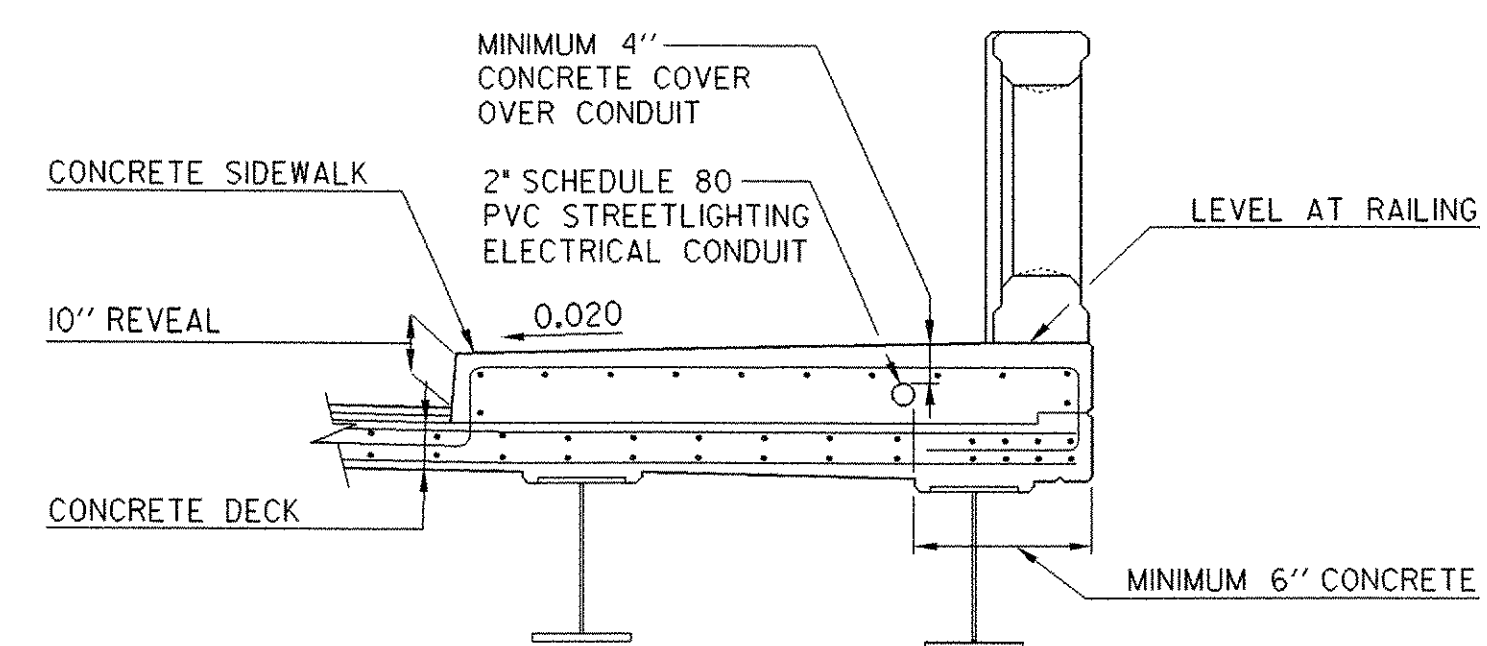
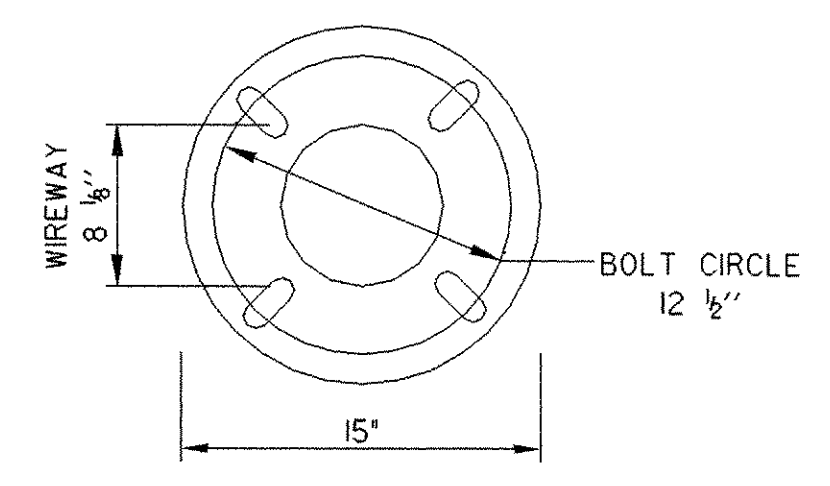


GENERAL NOTES AND SPECIFICATIONS

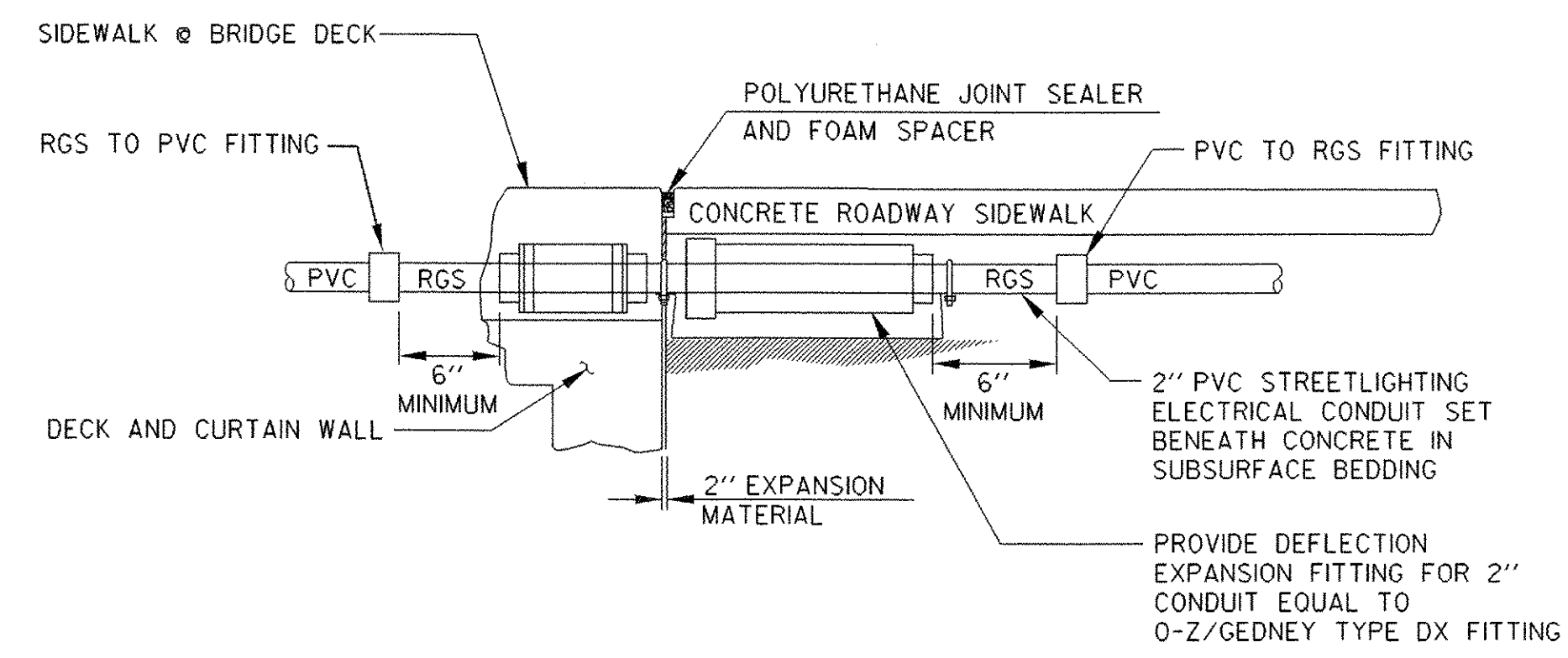
1. THE SCOPE OF WORK IS TO PROVIDE ALL LABOR, MATERIALS, SERVICES, SUPPLIES, TOOLS, EQUIPMENT, TRANSPORTATION, AND FACILITIES NECESSARY TO FURNISH AND INSTALL COMPLETE ELECTRICAL WORK AS CALLED FOR ON THE DRAWINGS, SPECIFIED, OR INCIDENTAL TO THIS WORK. PAYMENT FOR THIS WORK WILL BE UNDER ITEM 679.15 - STREET LIGHTING.
2. THE COST OF PERMIT CERTIFICATES, LICENSES, INSPECTIONS AND APPROVALS SHALL BE INCIDENTAL TO THE STREETLIGHTING ITEMS.
3. ALL MATERIALS AND INSTALLATION SHALL BE IN ACCORDANCE WITH THE LATEST EDITION OF THE NATIONAL ELECTRICAL CODE, AND ALL CODES, REGULATIONS AND REQUIREMENTS OF ALL MUNICIPAL, STATE, FEDERAL, UTILITY, AND OTHER PUBLIC OR PRIVATE AUTHORITIES WHICH HAVE JURISDICTION. IN EACH CASE, CODES ARE MINIMUM REQUIREMENTS.
4. SHOP DRAWINGS: SUBMIT COMPLETE CATALOG INFORMATION PER SUBSECTION 105.03 FOR ALL MATERIALS AND EQUIPMENT TO BE PURCHASED AND USED ON THIS PROJECT, AS SPECIFIED ON THE DRAWINGS. DO NOT INSTALL MATERIALS OR EQUIPMENT WITHOUT APPROVAL BY THE ENGINEER. UNAPPROVED MATERIAL ALREADY INSTALLED SHALL BE SUBJECT TO REMOVAL AND REPLACEMENT WITH APPROVED MATERIALS AT THE CONTRACTOR'S EXPENSE.
5. MATERIALS AND EQUIPMENT SHALL BE LISTED BY UNDERWRITERS' LABORATORIES AND SHALL BE INSTALLED IN ACCORDANCE WITH SUCH LISTINGS.
6. INSTALLATION SHALL BE MADE IN ACCORDANCE WITH MANUFACTURER'S RECOMMENDATIONS.
7. CONTRACTOR TO CONTACT DIGSAFE IN VERMONT STATE PRIOR TO COMMENCING WORK.
8. CONTRACTOR TO CONTACT UTILITY COMPANY FOR COORDINATION OF NEW ELECTRICAL SERVICE.
9. ELECTRICAL SERVICES SHALL BE A 100A, 120/240V, SINGLE PHASE, THREE WIRE SERVICE. METER SOCKET SHALL BE PER UTILITY REQUIREMENTS. SEE VAOT STANDARDS E-175 DETAIL FOR METER/DISCONNECT STANCHION. ALL SERVICE ENTRANCE EQUIPMENT SHALL BE RATED 22 KAIC (MIN.) STANCHION SHALL INCLUDE A NEMA 4 ENCLOSURE WITH A 12 CKT PANEL WITH A 100A, 240V, 2 POLE MAIN BREAKER. PROVIDE (2) 20A, 240V, 2 POLE BREAKERS FOR STREET LIGHTING AND (4) 20A, 240V, 2 POLE BREAKERS WITH GROUND FAULT PROTECTION FOR PERMANENT BRIDGE CROSSING HEAT TRACE SYSTEM. PROVIDE (2) 20A, 120V, 1POLE BREAKERS FOR SPARE. NEMA 4 ENCLOSURE SHALL BE SIZED TO ALSO INCLUDE THE EQUIPMENT REQUIRED FOR THE PERMANENT BRIDGE CROSSING HEAT TRACE CONTROL SYSTEM (1) INTERNAL SWITCHING CONTACTOR RATED AT 20A, 240V (2) SURFACE MOUNTED WEATHER-PROOF FLASHING LIGHT, (3) HIGH AND LOW TEMPERATURE ALARM AND HIGH CURRENT ALARM, (4) ALPHANUMERIC DISPLAY MOUNTED ON THE INSIDE OF THE PANEL. COORDINATE WITH PERMANENT BRIDGE CROSSING HEAT TRACE SYSTEM FOR EXACT REQUIREMENTS.
10. ORNAMENTAL STREETLIGHT SHALL BE:
LUMINAIRE: LUMAC 100MH-L29-PCFC-RR3-240-I-BKTX-LMS9631A
POLE: LUMAC R77-II-I-BKTX-LMS9631A
THERE SHALL BE NO SUBSTITUTIONS.
11. LUMINAIRE SOURCE SHALL BE MOUNTED AT 14FT ABOVE ROADWAY SURFACE. LIGHTING SHALL PROVIDE A MINIMUM MAINTAINED ILLUMINATION ON THE ROADWAY SURFACE (FROM STATION - TO STATION -) OF 0.9 FOOTCANDLES WITH A MAXIMUM UNIFORMITY OF 3:1.
12. MAXIMUM OF 270 DEGREES IN TOTAL BEND SHALL BE PERMITTED IN SINGLE RUN OF CONDUIT.
13. LIGHTS SHALL BE FUSED AT BASE WITH Y-TYPE FUSE KIT (EQUIVALENT OF HOMAC/FLOOD SEAL: FYC-6 AND 10 AMP FUSE).
14. UTILIZE DUAL-RATED PARALLEL TAP CONNECTORS AT POLE BASES EQUIVALENT TO ILSCO GTA SERIES WITH INSULATED COVERS.
15. UTILIZE APPROVED DUAL-RATED PARALLEL TAP CONNECTOR EQUAL TO ILSCO PED SERIES WATERTIGHT CONNECTOR, SUITABLE FOR DIRECT BURIAL IN JUNCTION BOXES, HANDHOLES AND MANHOLES.
16. POWER STANCHION AND ASSOCIATED WORK WILL BE PAID FOR UNDER ITEM 679.28 - POWER STANCHION.



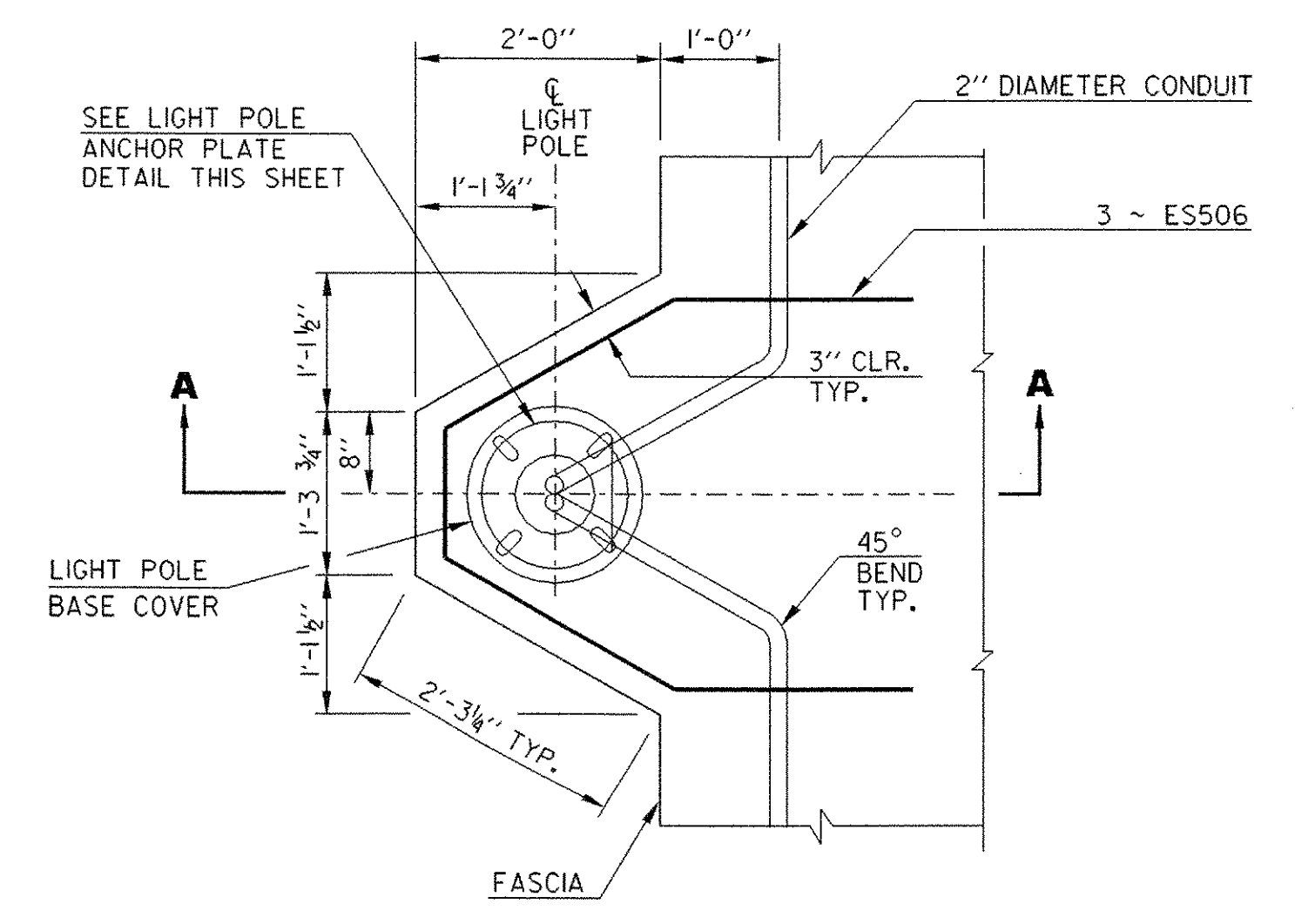
STREETLIGHTING ELECTRICAL CONDUIT IN SIDEWALK AT BRIDGE TYPICAL
NOT TO SCALE



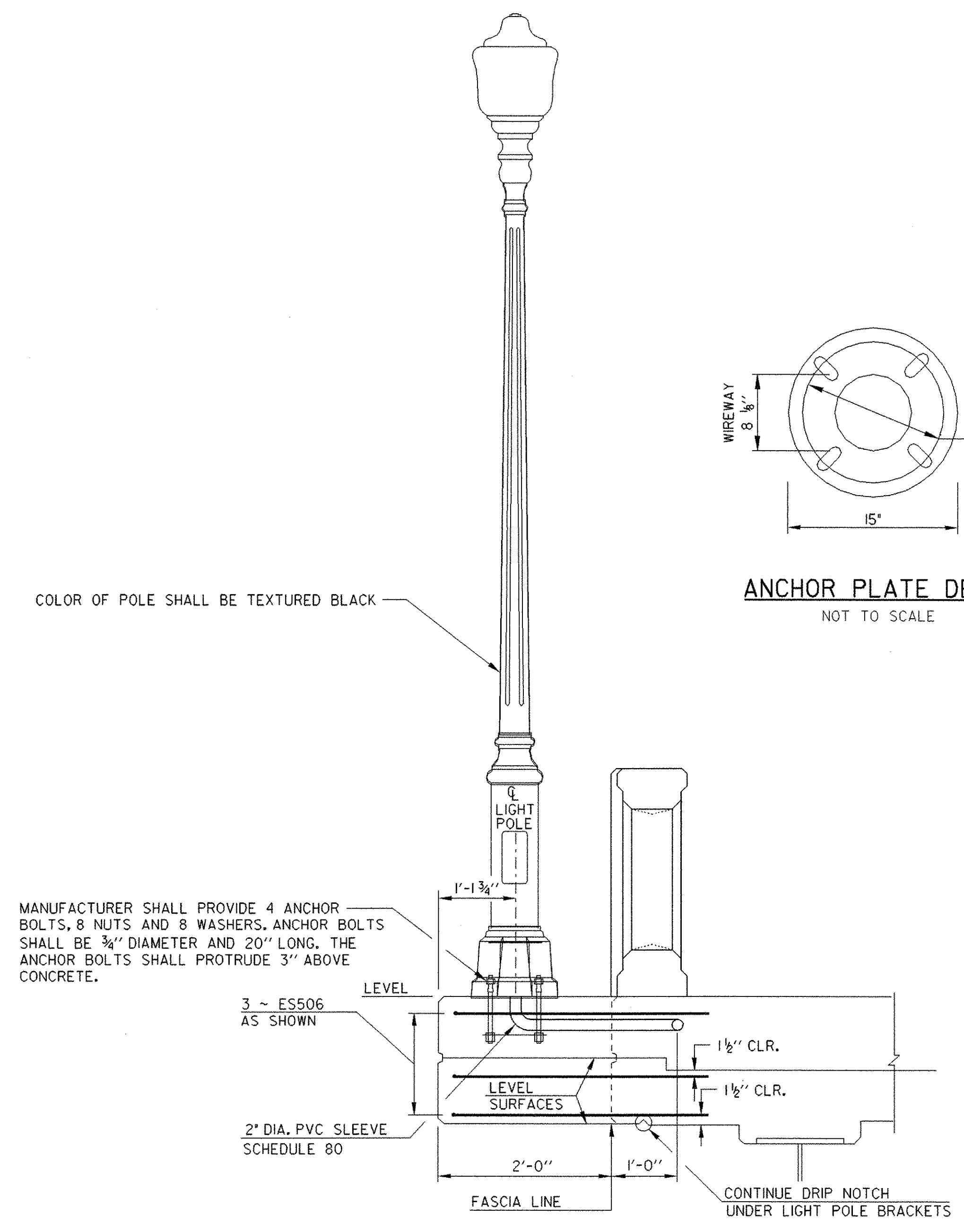
ANCHOR PLATE DETAIL
NOT TO SCALE



STREETLIGHTING CONDUIT AT TRANSITION TO CONCRETE ROADWAY SIDEWALK
NOT TO SCALE



LIGHT POLE BASE REINFORCING DETAIL
NOT TO SCALE



SECTION A-A
NOT TO SCALE

COLOR OF POLE SHALL BE TEXTURED BLACK

MANUFACTURER SHALL PROVIDE 4 ANCHOR BOLTS, 8 NUTS AND 8 WASHERS. ANCHOR BOLTS SHALL BE 3/4\"/>

STREET LIGHTING DETAILS

PROJECT NAME:	RANDOLPH
PROJECT NUMBER:	BRF 0241(29)
FILE NAME:	/str5/88j096/sj096igt4.dgn
PROJECT LEADER:	W. Symonds
DESIGNED BY:	DUFRESNE-HENRY
PLOT DATE:	29-AUG-2006
DRAWN BY:	G. Shangraw
CHECKED BY:	
SHEET	88 OF 135