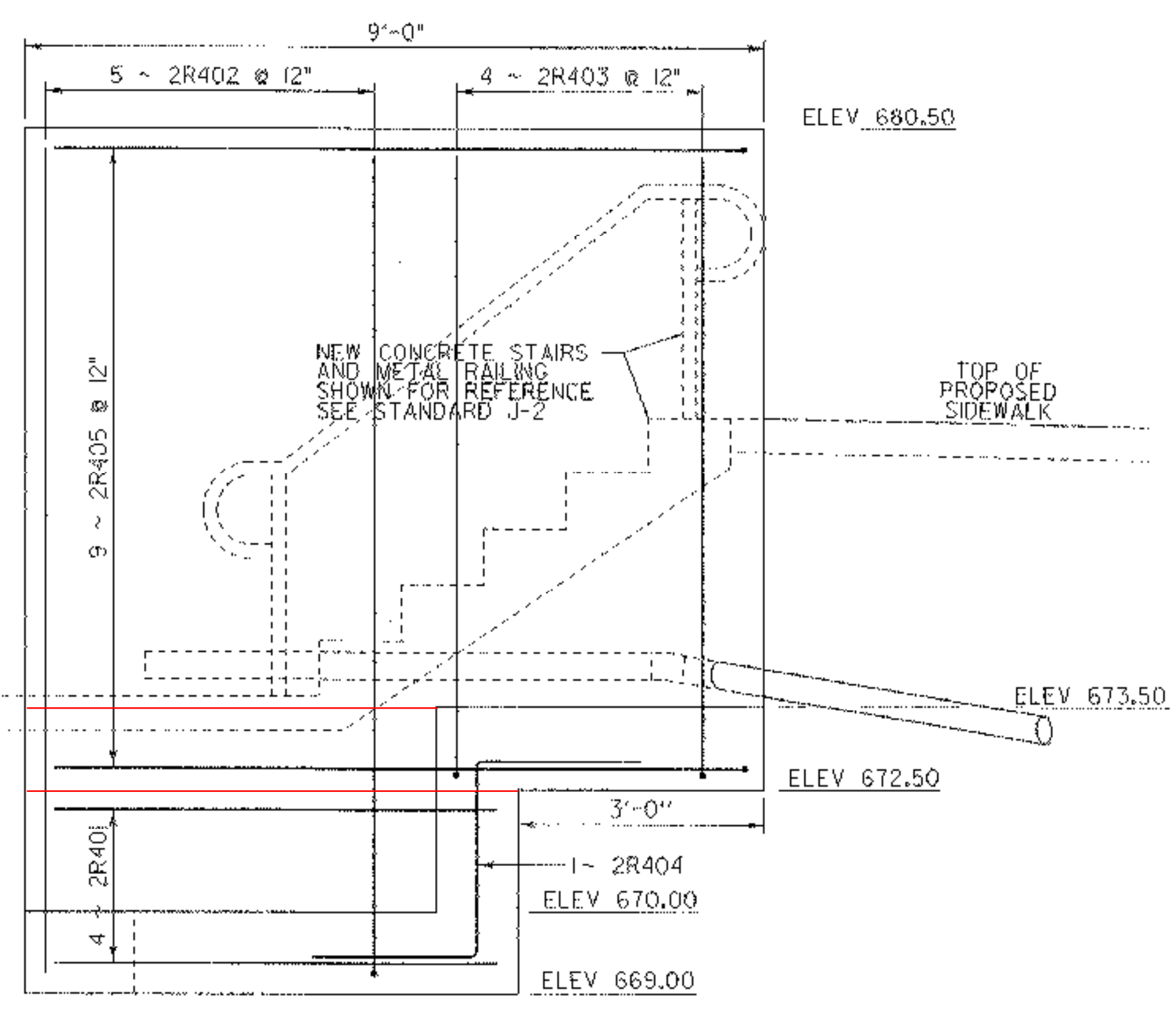
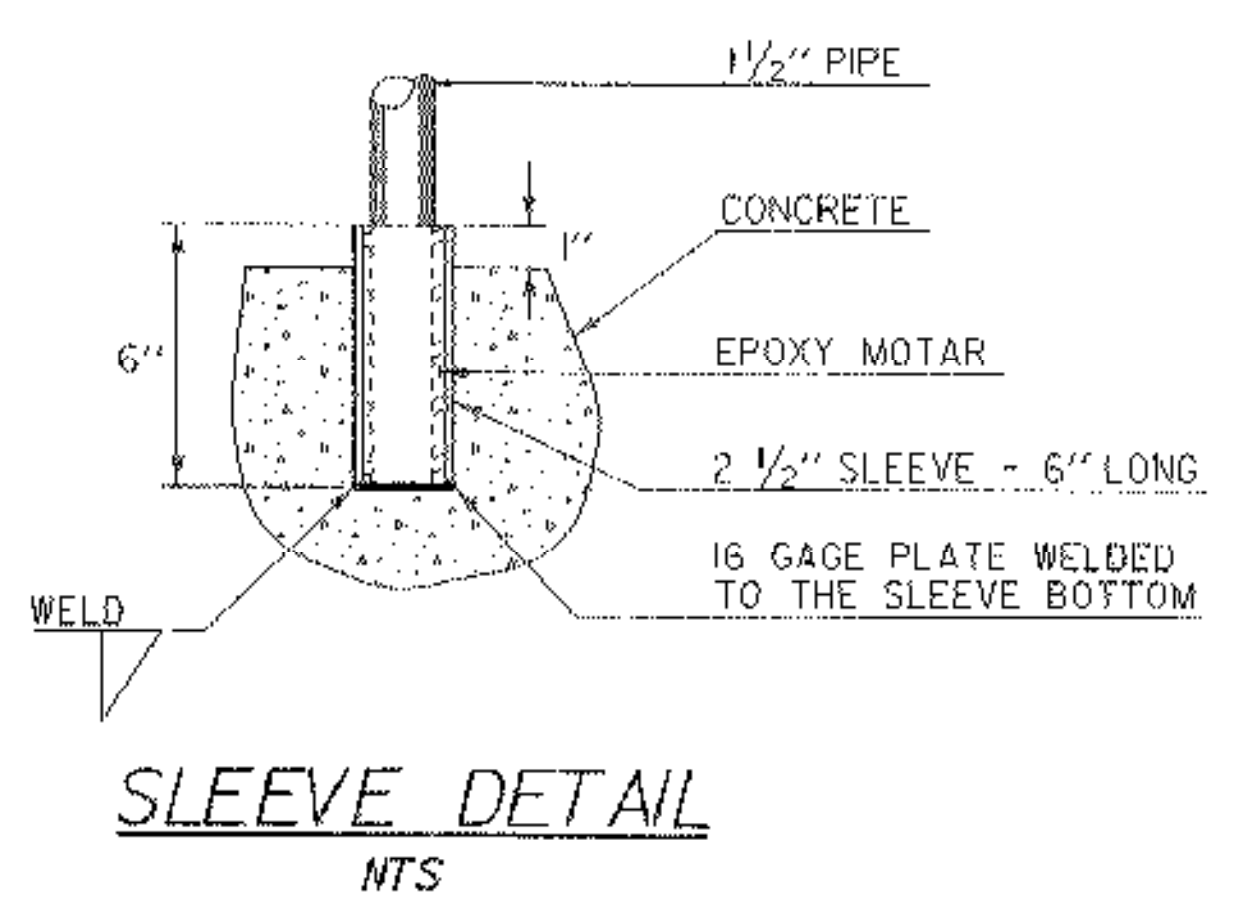


TYPICAL SECTION

SCALE 1 1/2" = 1'-0"
 1 9 6 3 0

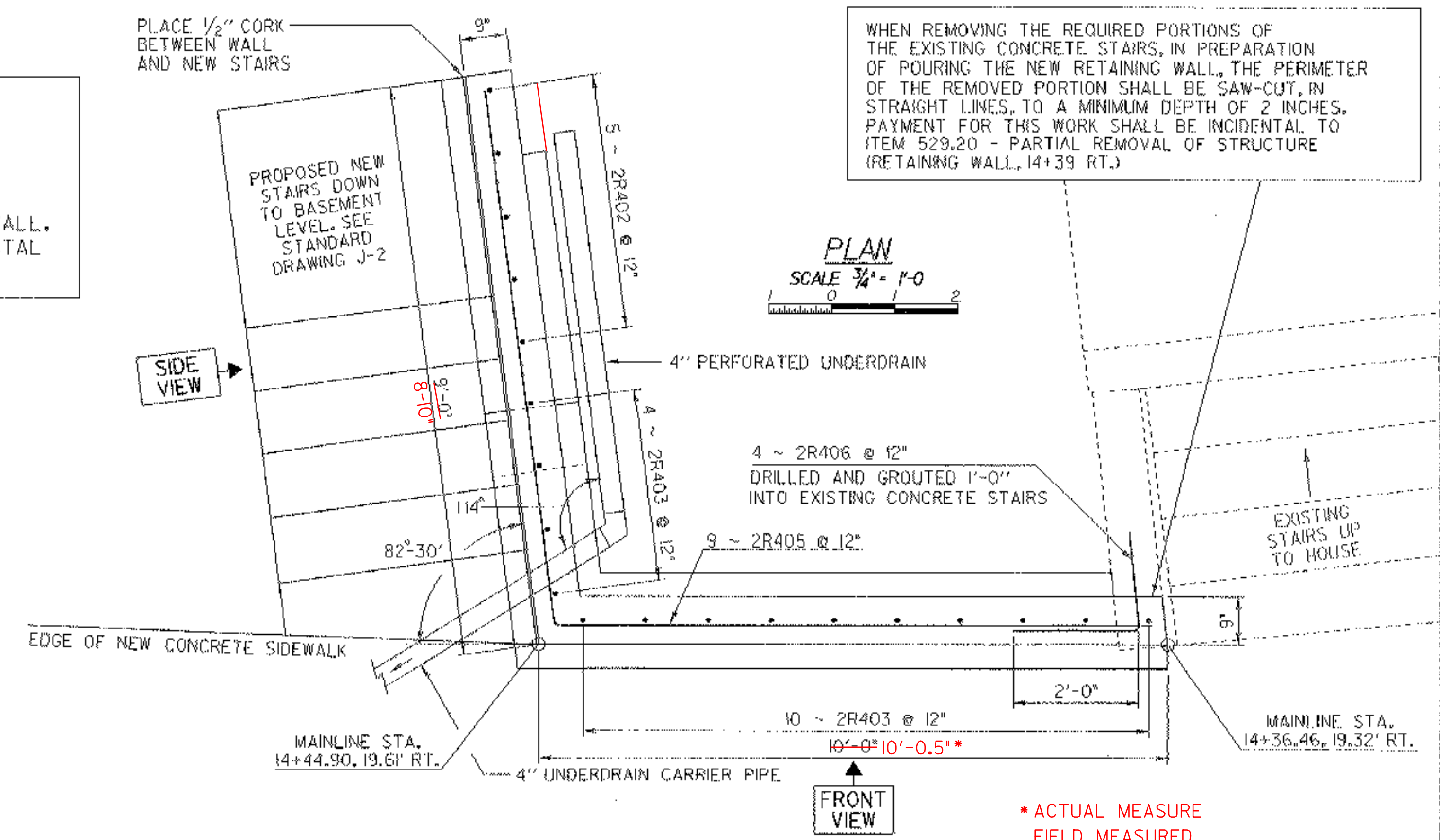
METAL HAND RAILING NOTES:
 1) THE RAILING WILL BE PAINTED BLACK IN ACCORDANCE WITH SECTION 513.
 2) THE RAILING NEED NOT BE GALVANIZED.
 3) APPROVED SLEEVES WILL BE USED TO EMBED THE RAILING IN THE CONCRETE RETAINING WALL. PAYMENT FOR THE SLEEVES WILL BE INCIDENTAL TO ITEM 525.15 - METAL HAND RAILING.



SCALE 3/4" = 1'-0"

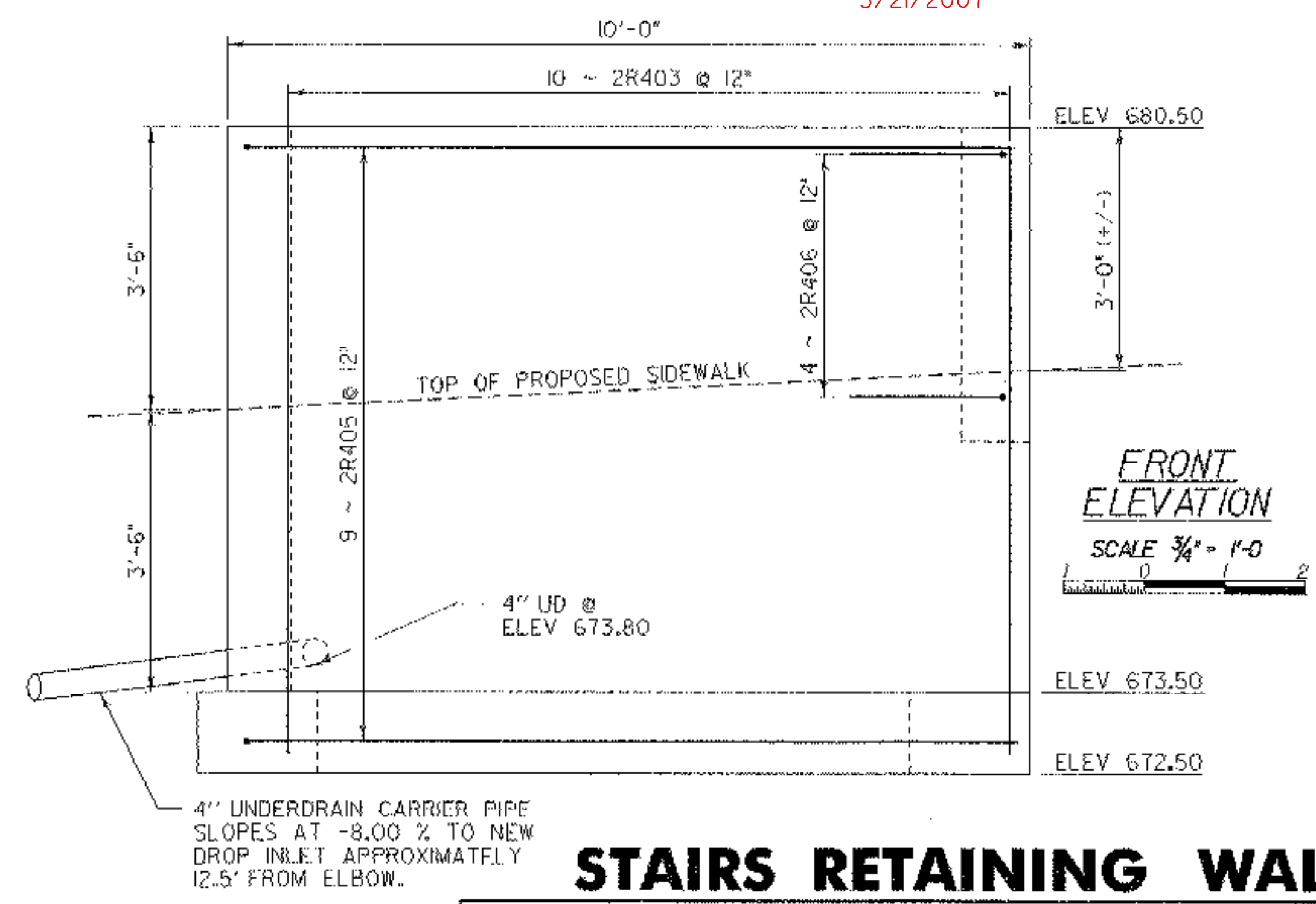
PLACE 1/2" CORK BETWEEN WALL AND NEW STAIRS

SIDE VIEW



WHEN REMOVING THE REQUIRED PORTIONS OF THE EXISTING CONCRETE STAIRS, IN PREPARATION OF POURING THE NEW RETAINING WALL, THE PERIMETER OF THE REMOVED PORTION SHALL BE SAW-CUT, IN STRAIGHT LINES, TO A MINIMUM DEPTH OF 2 INCHES. PAYMENT FOR THIS WORK SHALL BE INCIDENTAL TO ITEM 529.20 - PARTIAL REMOVAL OF STRUCTURE (RETAINING WALL, 14+39 RT.)

* ACTUAL MEASURE FIELD MEASURED 5/21/2007



STAIRS RETAINING WALL

NOTE:
 NF - NEAR FACE
 FF - FAR FACE
 EF - EACH FACE
 ▲ - CUT TO FIT IN FIELD
 3" CLR. UNLESS OTHERWISE SPECIFIED ON THE PLANS.

PROJECT NAME:	RANDOLPH
PROJECT NUMBER:	BRF 0241 (29)
FILE NAME:	88j096/s88j096stairs.dgn
PLOT DATE:	29-AUG-2006
PROJECT LEADER:	W. SYMONDS
DRAWN BY:	G. SHANGRAW
DESIGNED BY:	T. FILLBACH
CHECKED BY:	T. SUMNER
s\j906stairwall.i	SHEET 81 OF 135