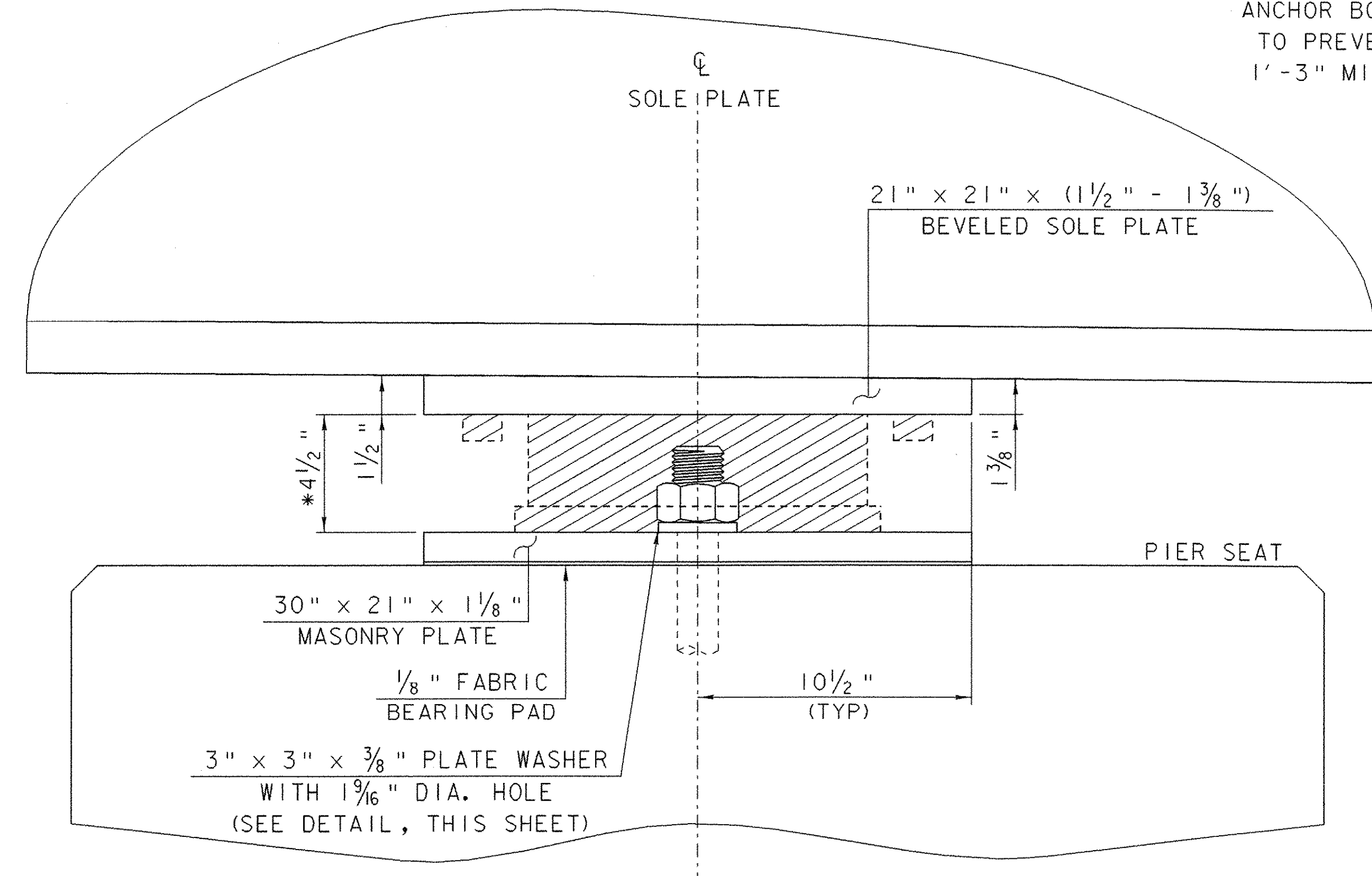
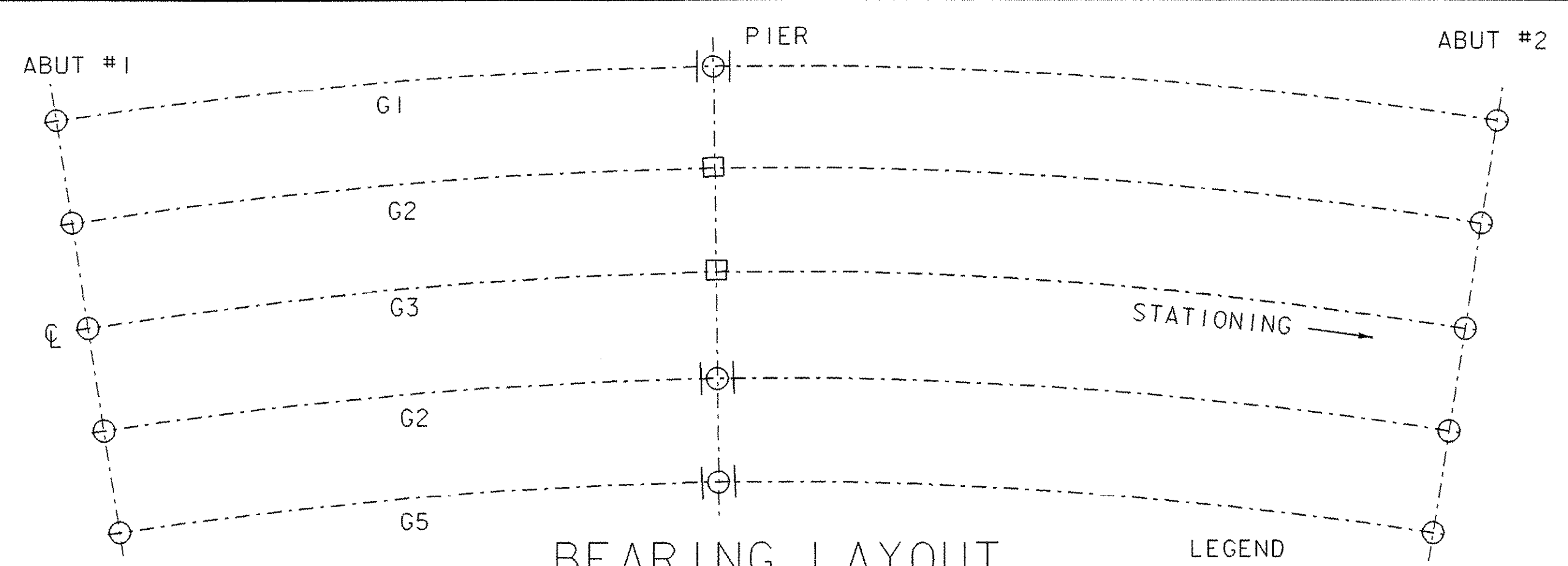


PLAN



ELEVATION

* SEE FINAL SHOP DRAWINGS FOR EXACT DIMENSIONS. BRIDGE SEATS MAY NEED ADJUSTMENT. THE CROSS HATCHED COMPONENTS OF THE BEARING ARE SHOWN FOR REPRESENTATIVE PURPOSES ONLY. THE ACTUAL CONFIGURATION OF THE COMPONENTS WILL BE DEPENDENT UPON THE BEARING FABRICATOR.



BEARING LAYOUT

- LEGEND**
- FIXED POT BEARING
 - GUIDED POT BEARING
 - REINFORCED ELASTOMERIC BEARING

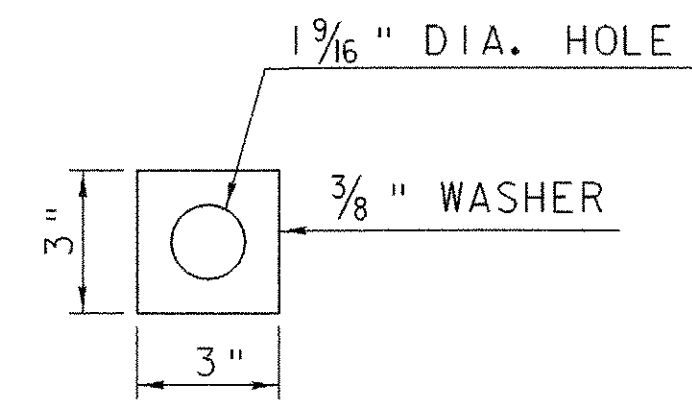
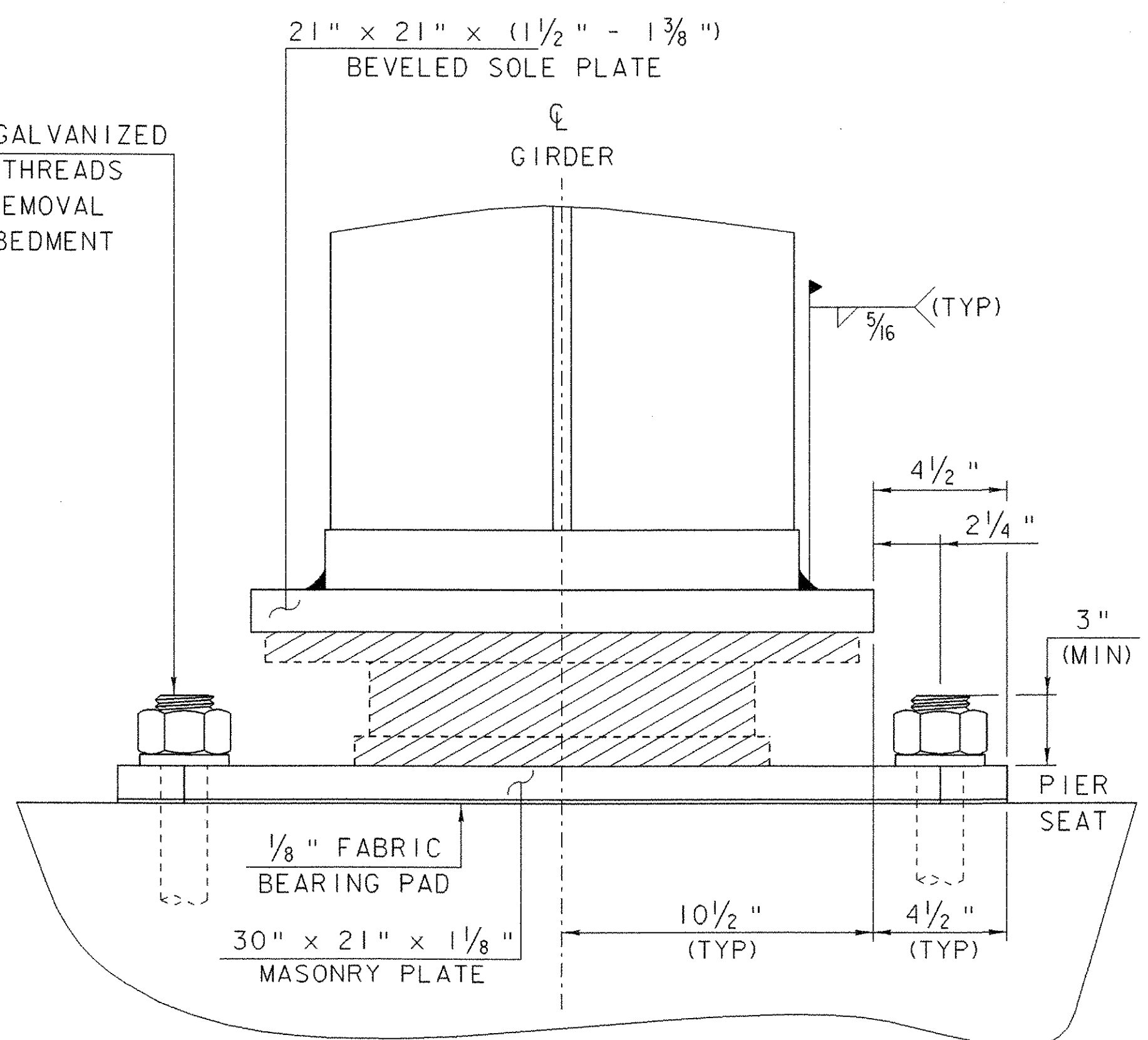


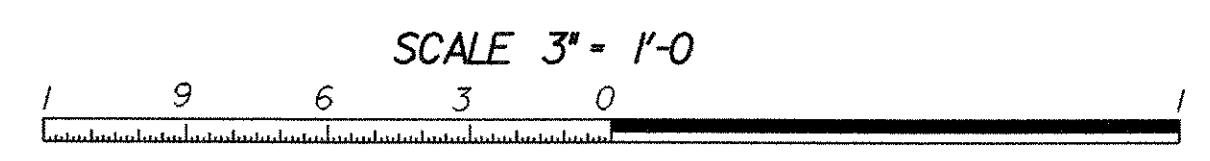
PLATE WASHER

PIER BEARING NOTES

1. Pier bearings shall conform to applicable subsections of Sections 531 and 731.
2. Pier bearings shall be paid for under Item 531.10 "Bearing Device Assembly (Pot)".
3. The concrete surface under the bearing device shall be level.
4. Design Criteria:
 - A. Base plate to concrete design pressure = 1.12 ksi maximum.
 - B. Minimum allowable design rotation = 0.013 radians.
 - C. Horizontal capacity shall be a minimum of 20% of the vertical load.
 - D. Design load per bearing (unfactored) at pier = 450 K
5. All steel in bearing devices (except stainless) shall be AASHTO M-270, grade 50.
6. Anchor bolts shall be ASTM A-449 and have a minimum embedment of 1'-3" into the concrete and shall conform to subsection 714.08 in the "Vermont Standard Specifications for Construction."
7. All bearing devices shall be galvanized or metalized as per subsection 531.04 (b) and 506.15. Areas of galvanizing or metalizing damaged by field welding or handling shall be painted with a zinc rich paint in accordance with Supplemental Specification 513. The inside of the pots shall not be galvanized or metalized.
8. All anchor bolts, nuts and washers shall be galvanized. All washers shall be 3/8" plate (minimum). Payment for drilling and grouting of anchor bolts, anchor bolts, nuts, and washers shall be included in the bid price for "Bearing Device Assembly (POT)".
9. Submit Designs for Alternate Bearings for approval.
10. All bearings shall be marked prior to shipping. The marks shall include the bearing location on the bridge, and a direction arrow that points up-station. All marks shall be permanent and be visible after the bearing is installed.



SECTION



GUIDED POT BEARINGS AT PIER - GIRDERS 1, 4, & 5

PROJECT NAME:	RANDOLPH
PROJECT NUMBER:	BRF 0241 (29)
FILE NAME: /str5/88j096/s88j096brg.dgn	PLOT DATE: 29-AUG-2006
PROJECT LEADER: W. SYMONDS	DRAWN BY: G. SHANGRAW
DESIGNED BY: T. SUMNER	CHECKED BY: T. FILLBACH
sj096br2.i	SHEET 64 OF 135