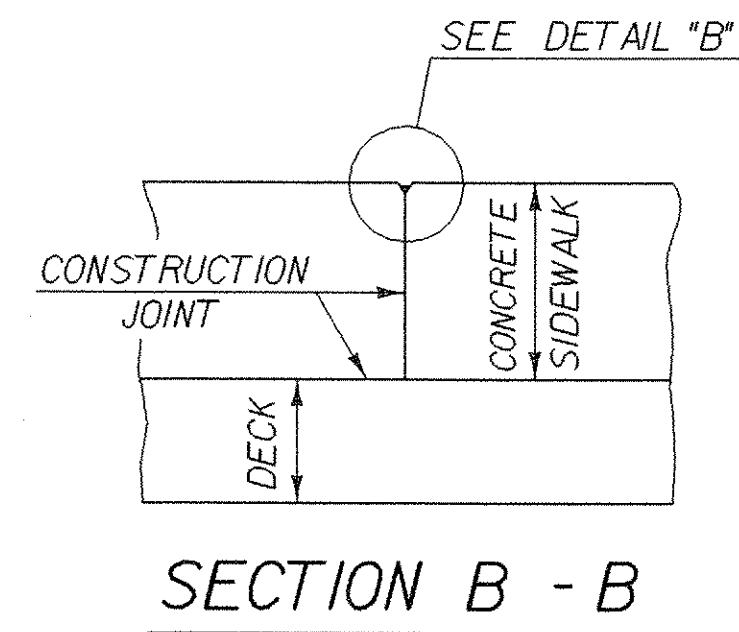
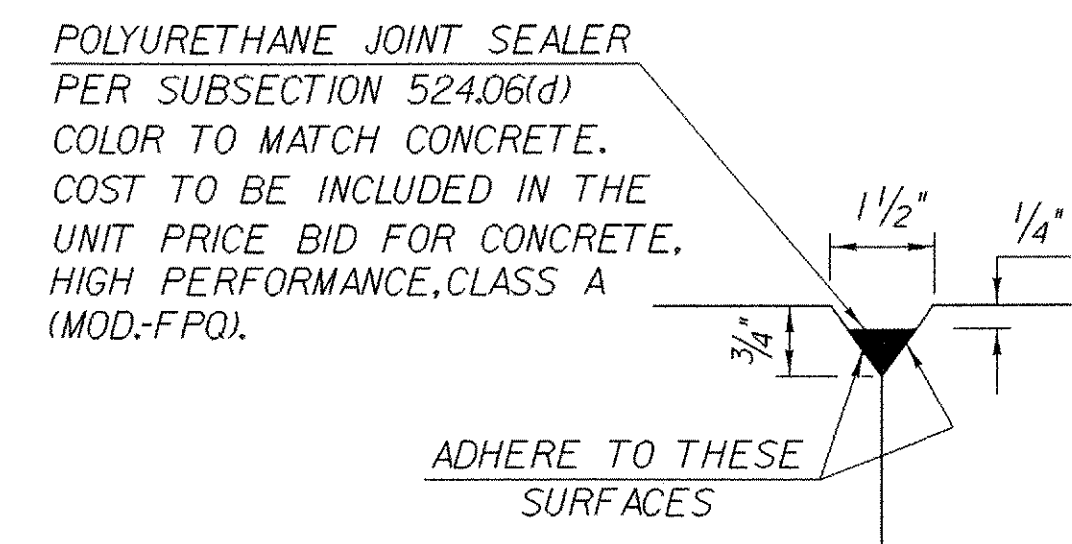


**TYPICAL SECTION THROUGH  
CONCRETE SIDEWALK CONSTRUCTION JOINT**

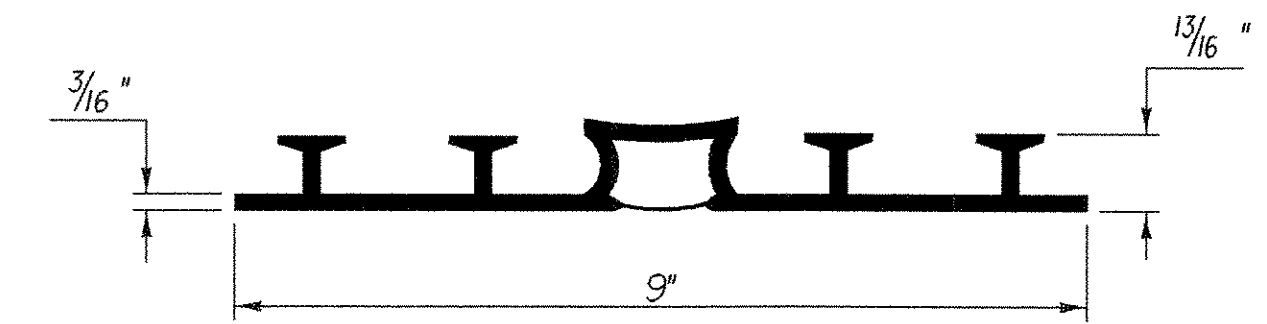
NOT TO SCALE



**SECTION B - B**



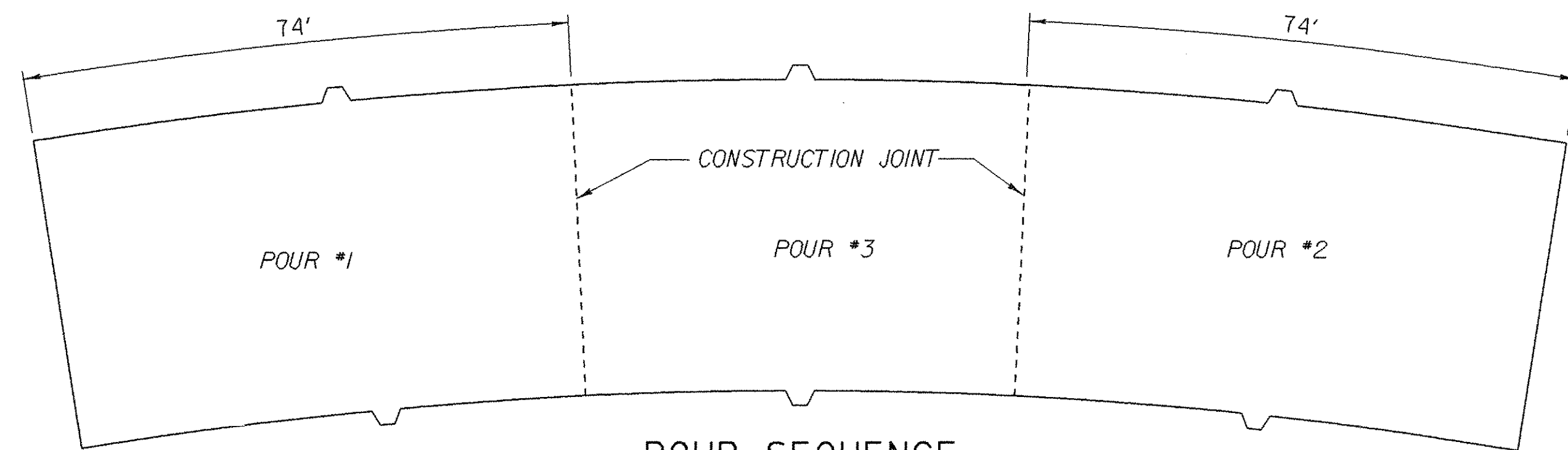
**DETAIL "B"**



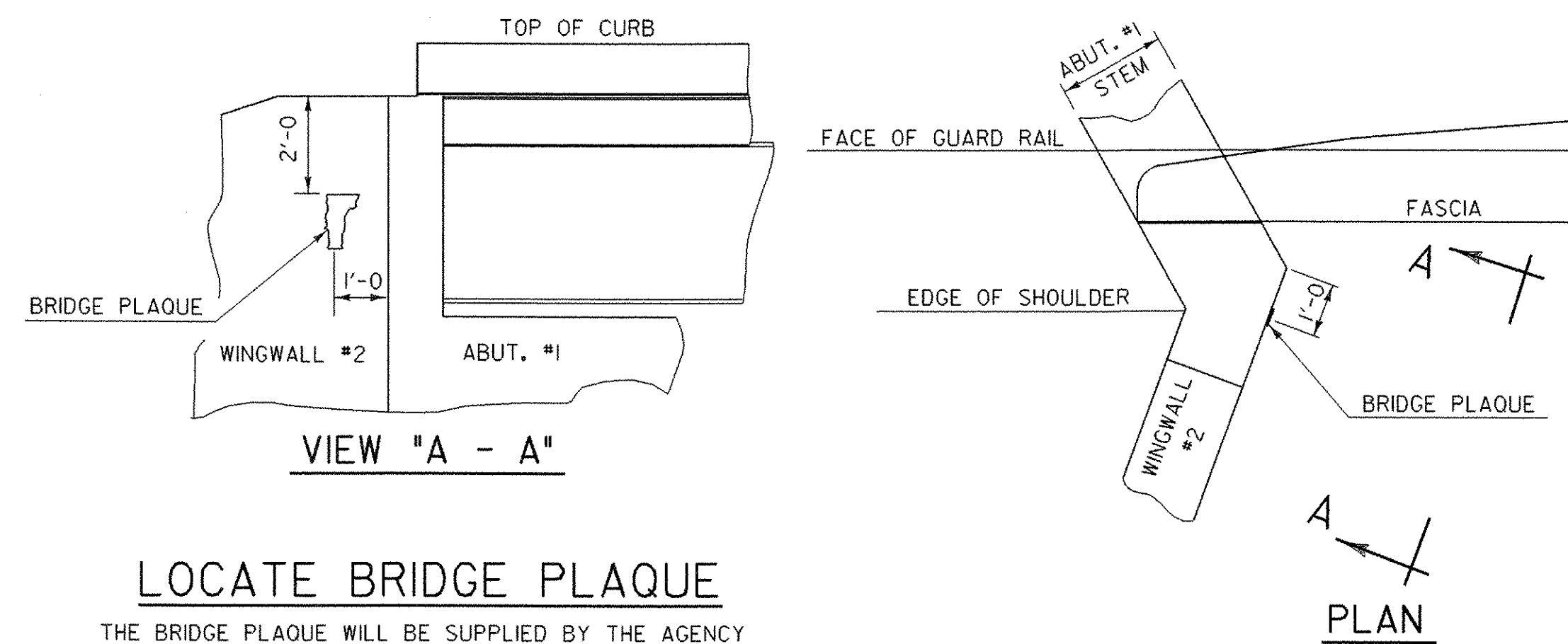
**P.V.C. WATERSTOP FOR EXPANSION JOINTS**

THE COSTS FOR P.V.C. WATERSTOP SHALL BE INCLUDED IN THE UNIT PRICE BID FOR CONCRETE, HIGH PERFORMANCE CLASS A (MOD.-FPO). OTHER CONFIGURATIONS MAY BE USED UPON APPROVAL OF THE STRUCTURES ENGINEER.

- NOTES:
1. CONSTRUCTION JOINTS THROUGH CONCRETE CURBS SHALL BE SPACED MAXIMUM 15'-0" CENTER TO CENTER AND SHALL BE 1'-6" MINIMUM FROM THE CENTER OF THE NEAREST BRIDGE RAIL POST. CONCRETE SHALL BE PLACED IN ALTERNATING SECTIONS WITH A MINIMUM OF 48 HOURS DELAY BETWEEN ADJACENT POURS.
  2. LONGITUDINAL REINFORCING SHALL PASS THROUGH CONCRETE CURB CONSTRUCTION JOINTS.

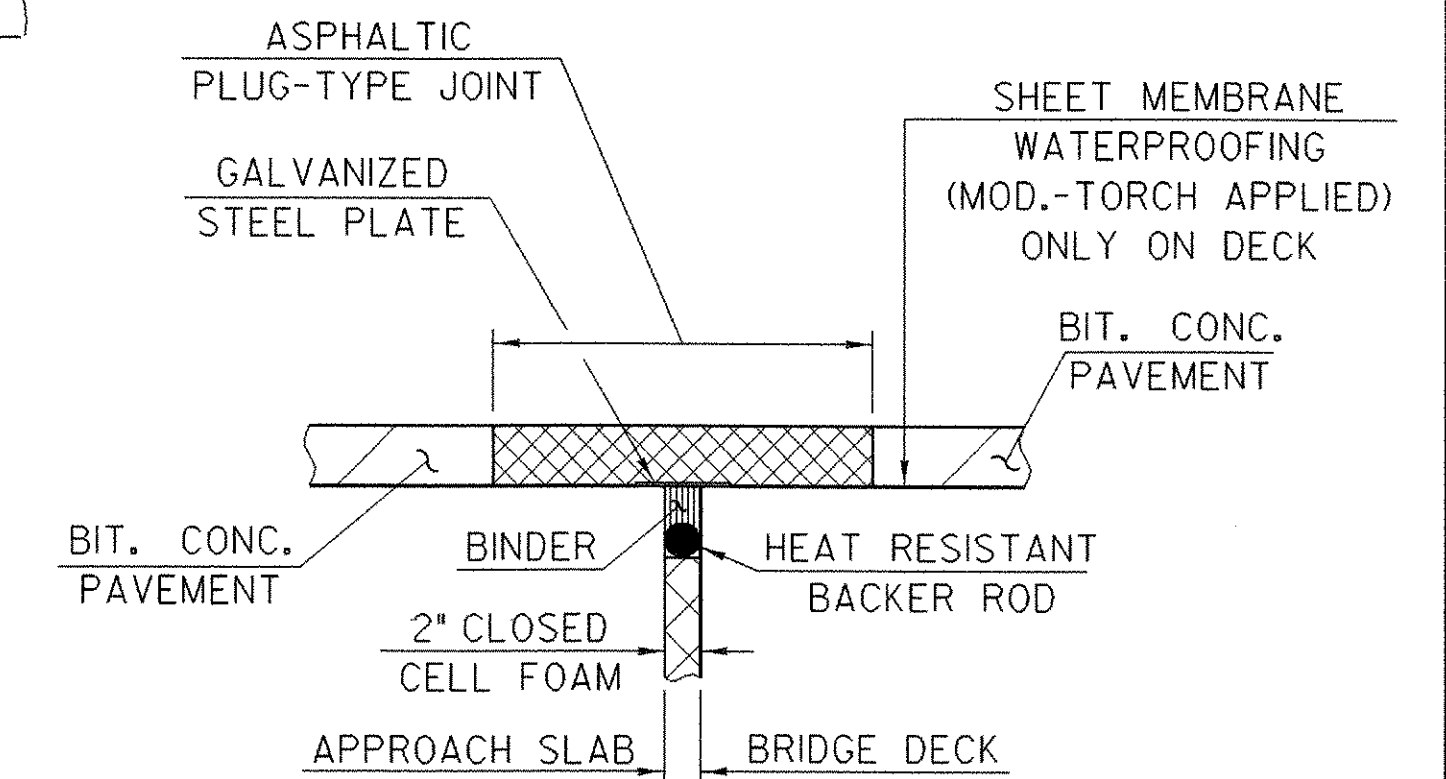


**POUR SEQUENCE  
NOT TO SCALE**



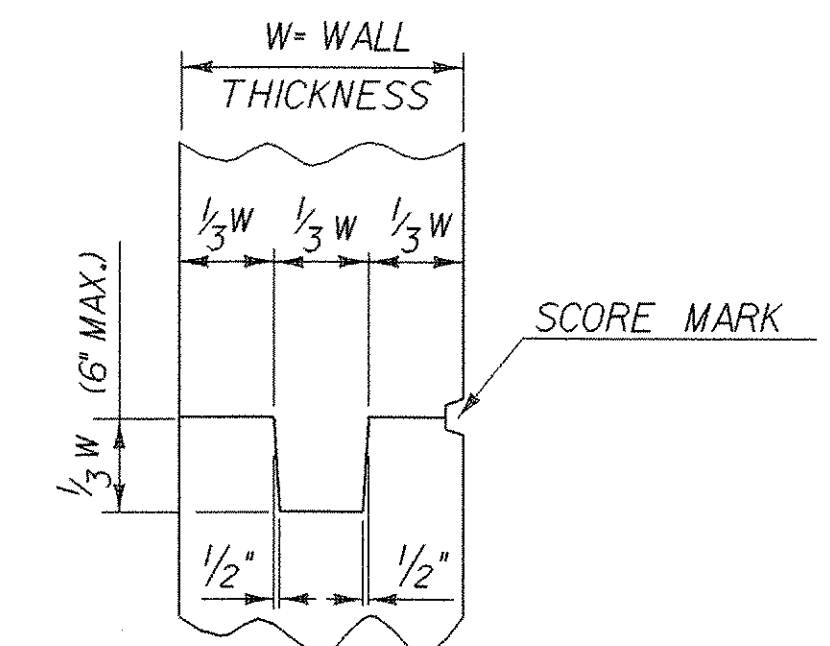
**LOCATE BRIDGE PLAQUE**

THE BRIDGE PLAQUE WILL BE SUPPLIED BY THE AGENCY OF TRANSPORTATION AND SHALL BE INSTALLED BY THE CONTRACTOR AT ABUTMENT #1 ON THE RIGHT SIDE AS SHOWN OR AS DIRECTED BY THE ENGINEER.



**ASPHALTIC PLUG-TYPE  
JOINT DETAIL**

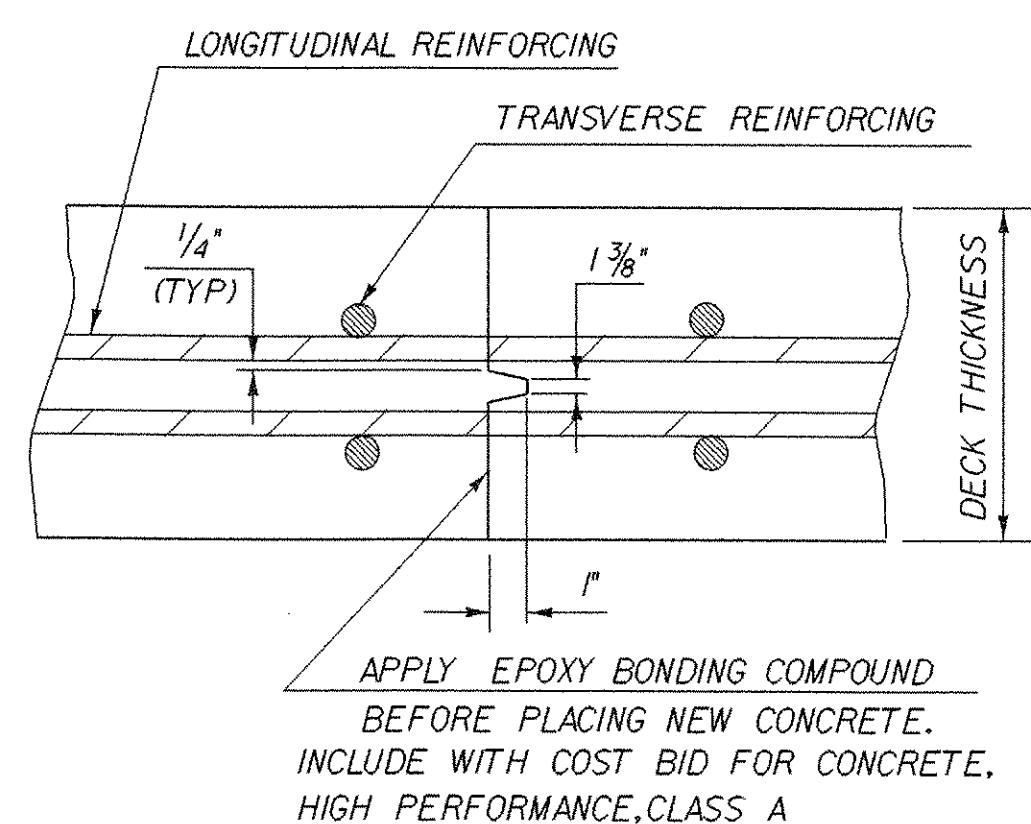
NTS



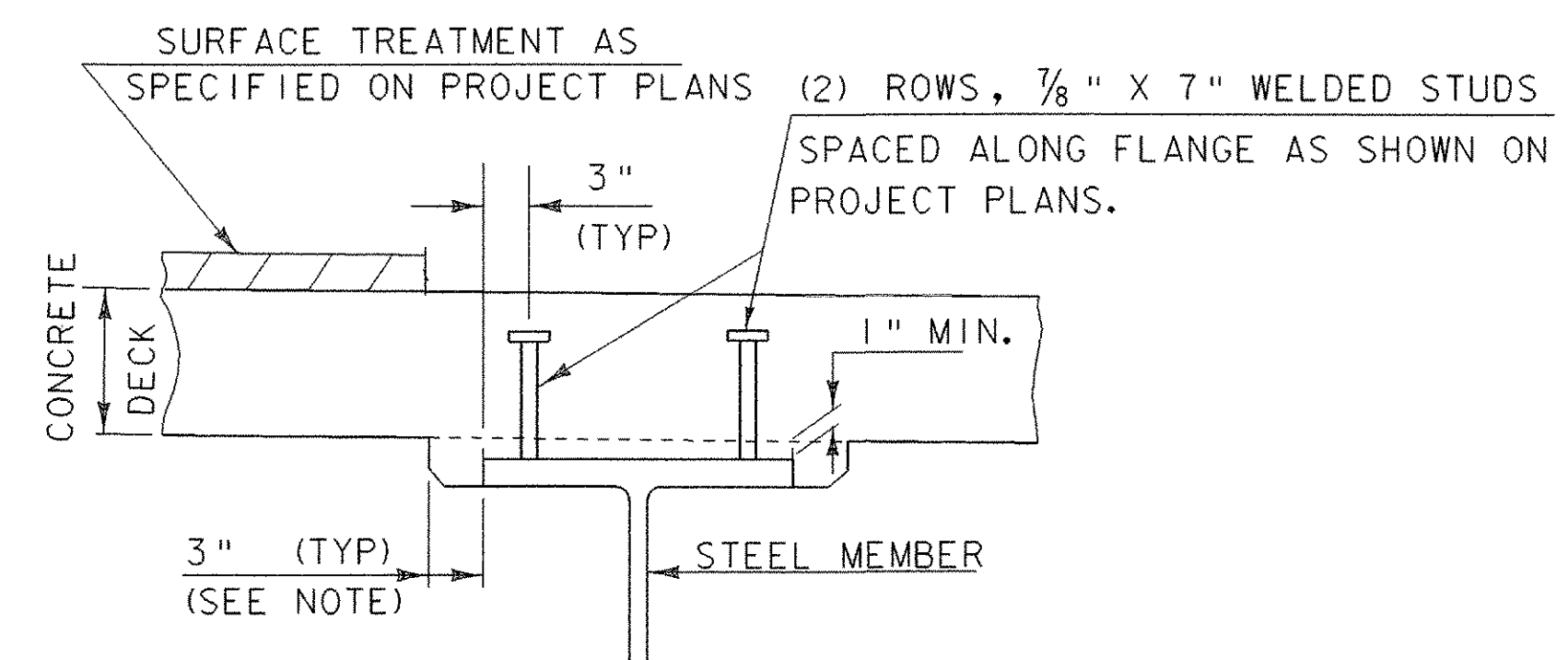
**TYPICAL CONCRETE  
CONSTRUCTION JOINT**

**POUR SEQUENCE NOTES:**

1. IF APPROVED BY THE ENGINEER, POURS #1 & #2 MAY BE Poured THE SAME DAY PROVIDED THAT THE MAXIMUM TIME SPAN OF THE POUR IS EIGHT HOURS. THE INDICATED POURING SEQUENCE SHALL BE FOLLOWED AND A RETARDING ADMIXTURE USED SO THAT THE DECK CONCRETE WILL NOT SET UP UNTIL ALL THE POUR HAS BEEN MADE. THE RETARDING ADMIXTURE SHALL BE INCIDENTAL TO THE OF 501.33 "CONCRETE HIGH PERFORMANCE, CLASS A (MOD.-FPO)".
2. TRANSVERSE BRIDGE SLAB CONSTRUCTION JOINTS, AS SHOWN ON THIS SHEET SHALL BE USED BETWEEN ADJACENT DECK POURS.
3. ALL INDIVIDUAL DECK POURS SHALL START FROM THE LOW END (RELATIVE TO GRADE).
4. THERE SHALL BE A MINIMUM DELAY PERIOD OF 96 HOURS BETWEEN POURS.
5. ANY POURING SEQUENCE OTHER THAN INDICATED SHALL BE SUBMITTED, IN WRITING, TO THE PROJECT MANAGER FOR APPROVAL.



**TRANSVERSE BRIDGE SLAB  
CONSTRUCTION JOINT DETAILS**



NOTE: THE 3" HORIZONTAL SECTION MAY BE ELIMINATED FOR FORMING SYSTEMS DESIGNED FOR THE CONSTRUCTION OF VERTICAL HAUNCHES. SYSTEMS SHALL BE SUBMITTED FOR APPROVAL TO THE STRUCTURES ENGINEER. ALL VOIDS SHALL BE FILLED WITH MORTAR, TYPE IV OR POLYURETHANE JOINT SEALER.

**HAUNCH AND SHEAR CONNECTOR DETAILS**

**MISCELLANEOUS DETAILS**

PROJECT NAME:	RANDOLPH	PROJECT NUMBER:	BRF 0241 (29)
FILE NAME:	/str/5/88j096/sj096sup.dgn	PLOT DATE:	29-AUG-2006
PROJECT LEADER:	W. SYMONDS	DRAWN BY:	G. SHANGRAW
DESIGNED BY:	T. SUMNER	CHECKED BY:	T. FILLBACH
	sj096mis.1	SHEET	61 OF 135