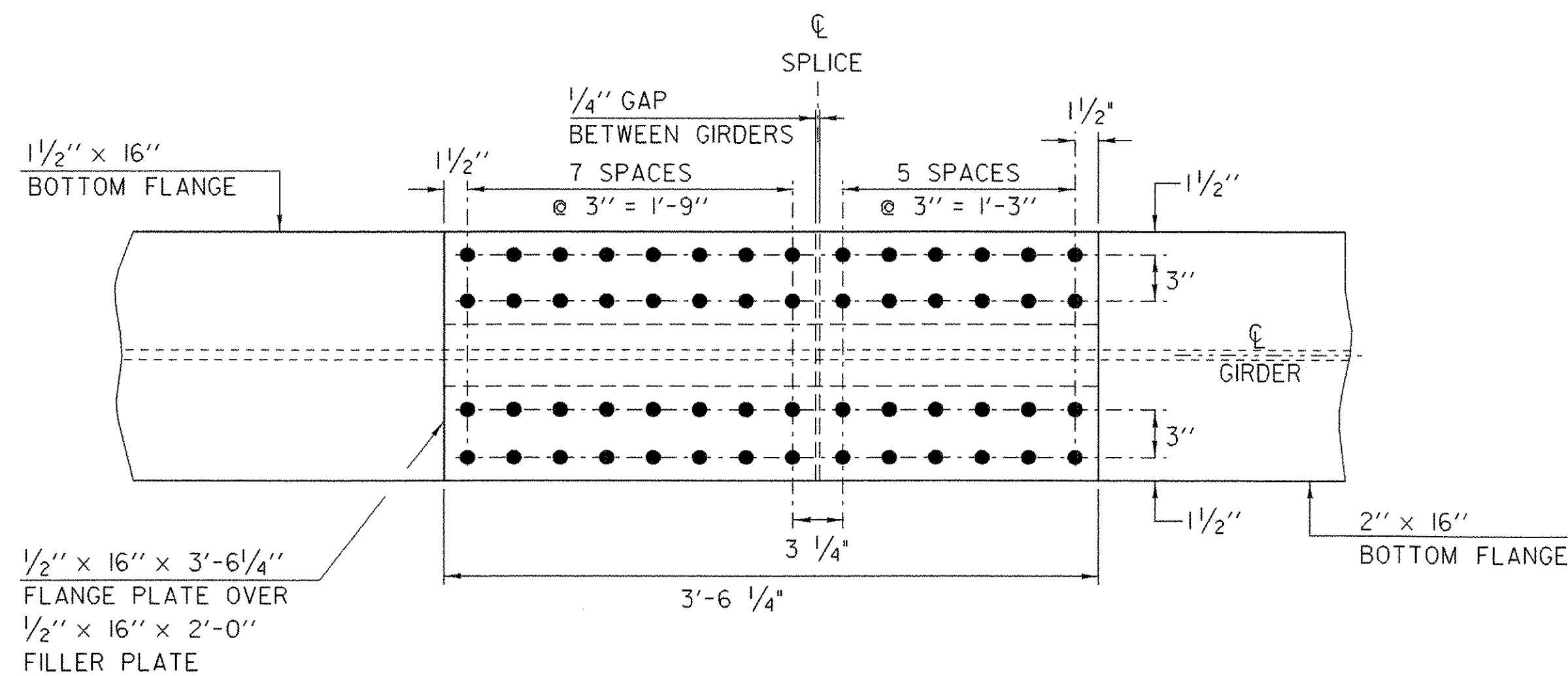
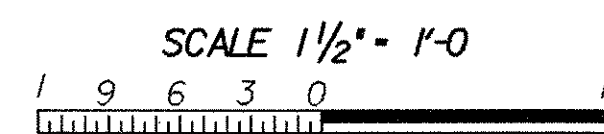
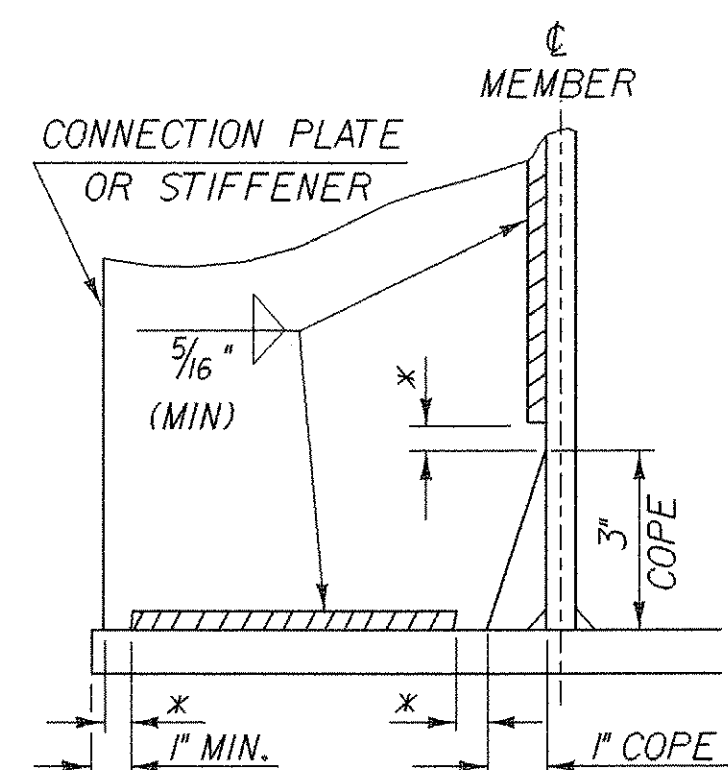
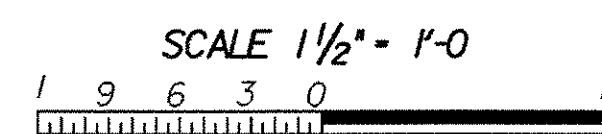


TOP FLANGE SPLICE PLATE DETAIL

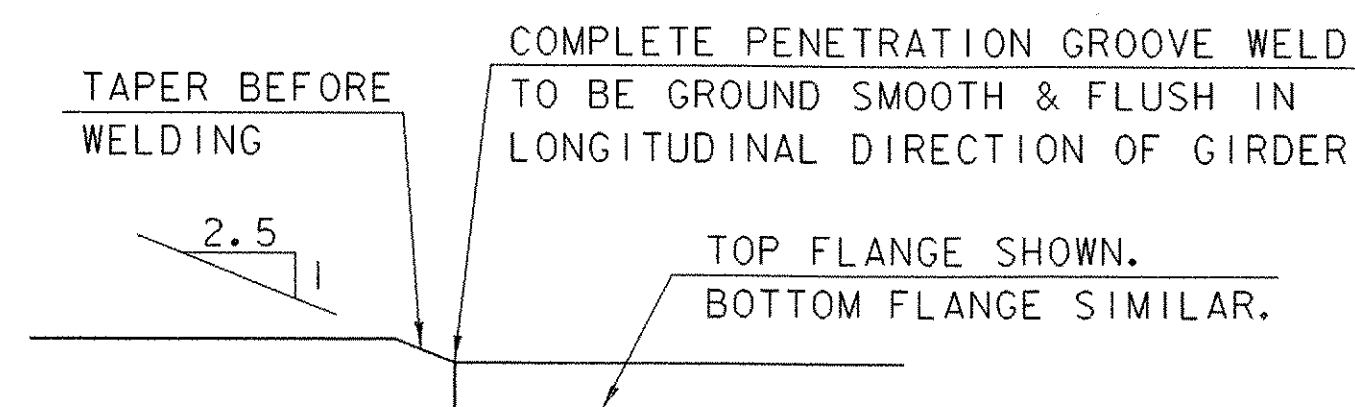


BOTTOM FLANGE SPLICE PLATE DETAIL

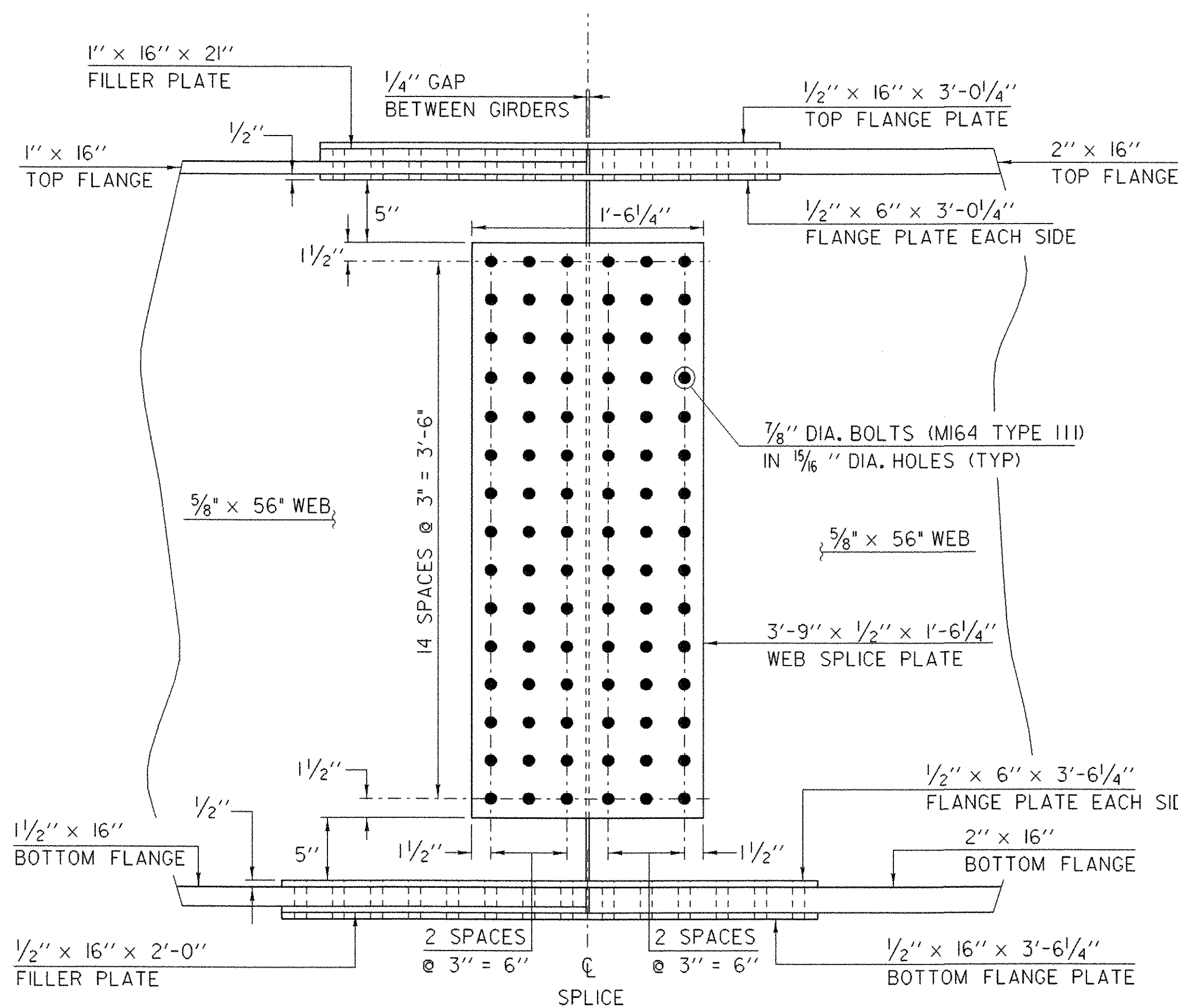


WELD TERMINATION AND COPING  
DETAILS FOR STEEL MEMBERS

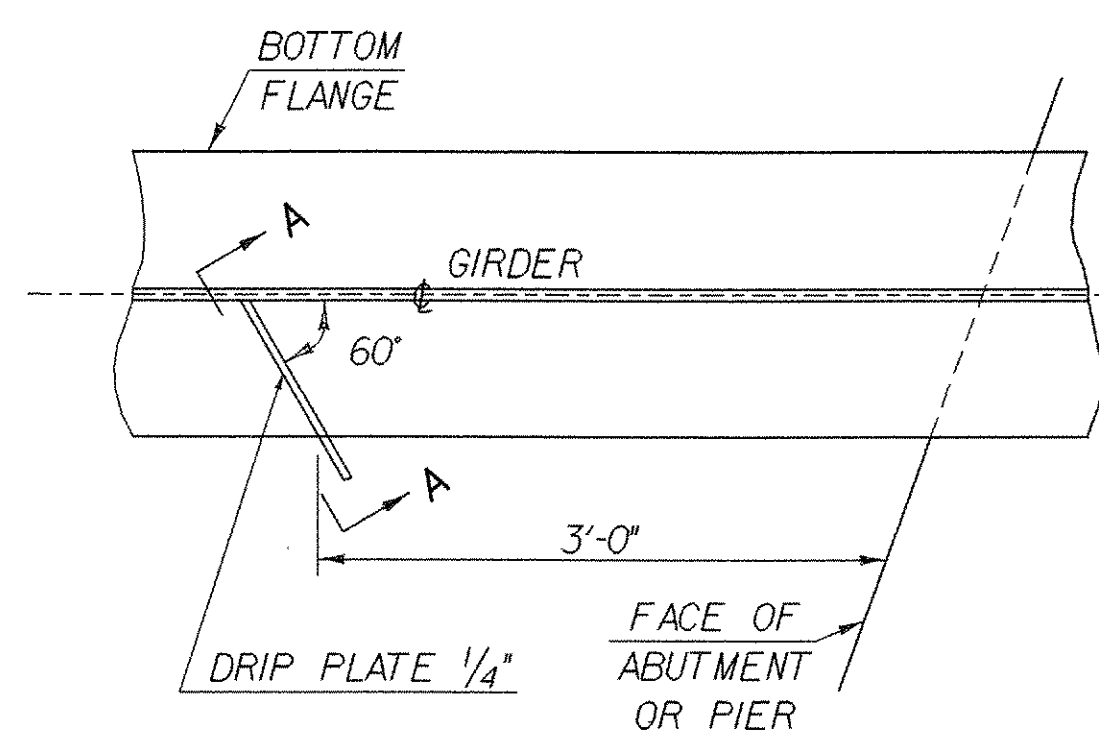
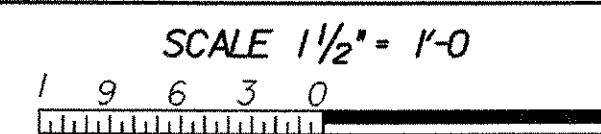
\* NO WELD FOR 3/8" MIN. 7/8" MAX. (EXCEPT MUST MAINTAIN 1" MINIMUM FROM EDGE OF FLANGE)



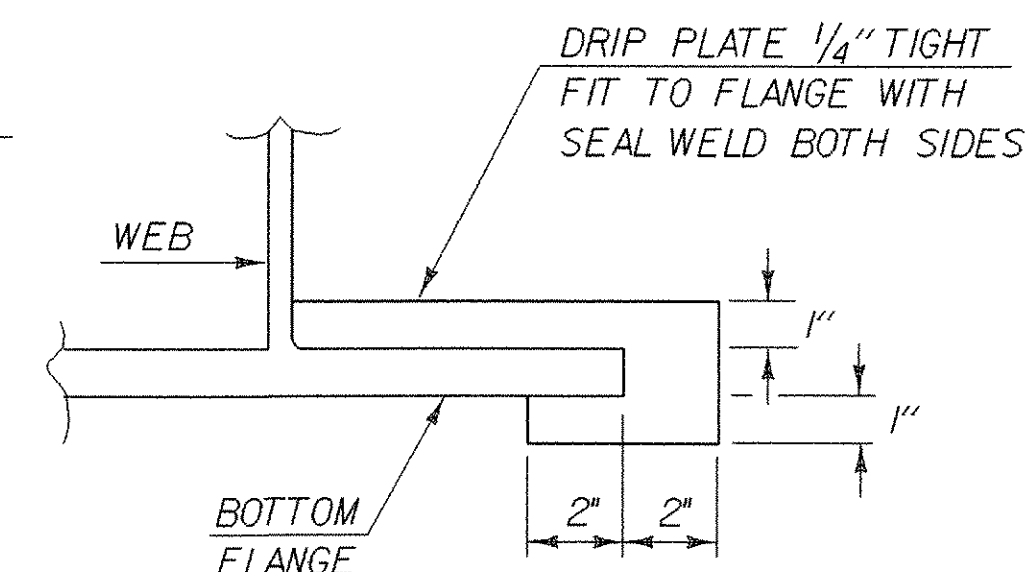
FLANGE THICKNESS  
TRANSITION DETAIL



WEB SPLICE PLATE DETAIL

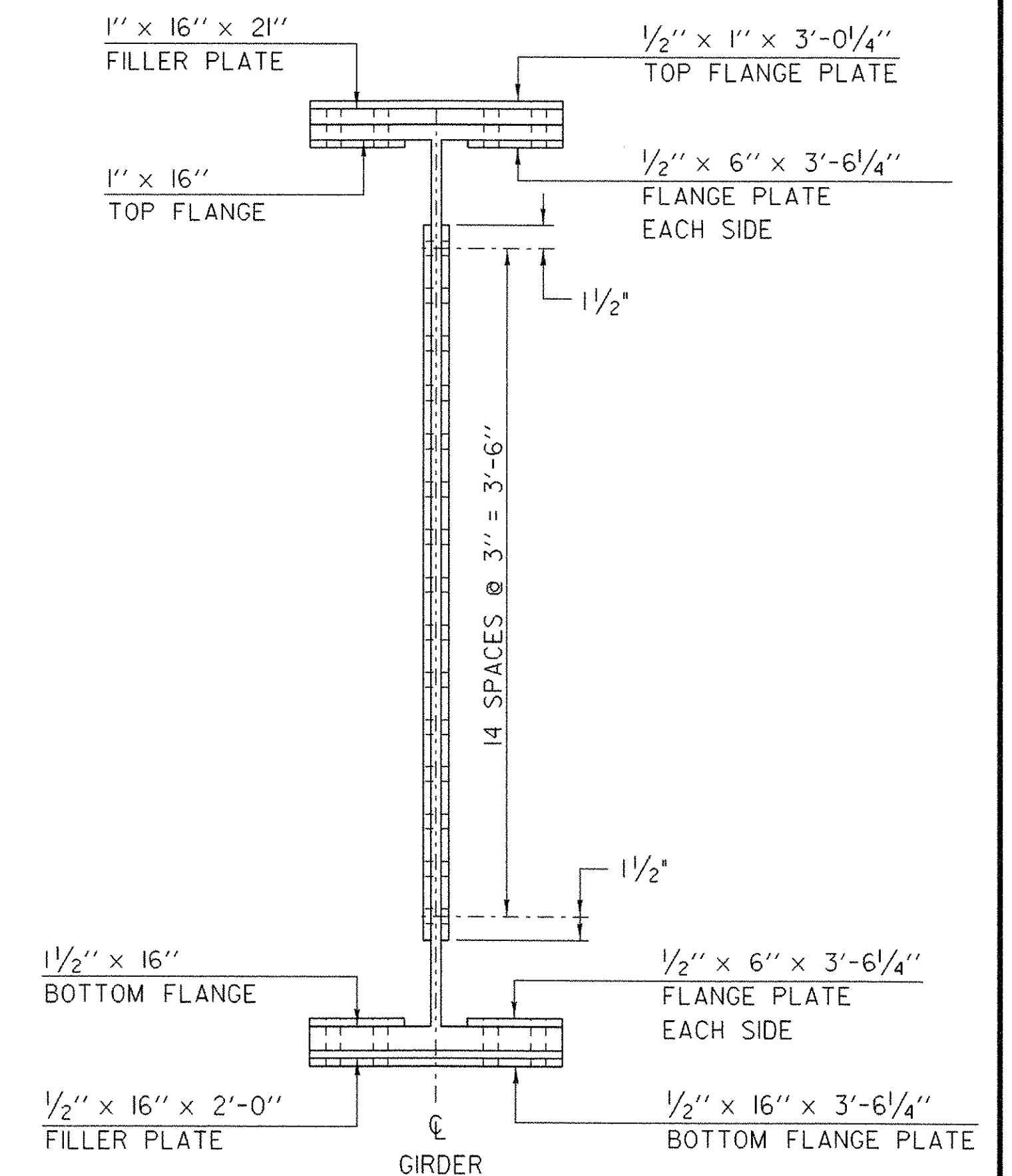


PLAN DRIP PLATE

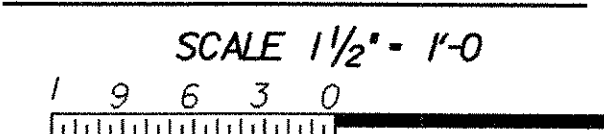


SECTION A - A

NOTE: DRIP PLATES SHALL BE PLACED ON OUTSIDE EDGE OF FASCIA GIRDERS ON THE HIGH SIDE OF ALL PIERS AND ABUTMENTS OR AS INDICATED ON PROJECT PLANS.



GIRDER SECTION



ALL SECTIONS OF THE SPLICE SHALL BE CVN (CHARPY V-NOTCH)

## SPLICE DETAILS GIRDERS 1 & 2

PROJECT NAME:	RANDOLPH	PLOT DATE:	29-AUG-2006
PROJECT NUMBER:	BRF 0241 (29)	DRAWN BY:	G. SHANGRAW
FILE NAME:	/str5/88j096/sj096sup.dgn	DESIGNED BY:	T. SUMNER
		CHECKED BY:	T. FILLBACH
			SHEET 57 OF 135