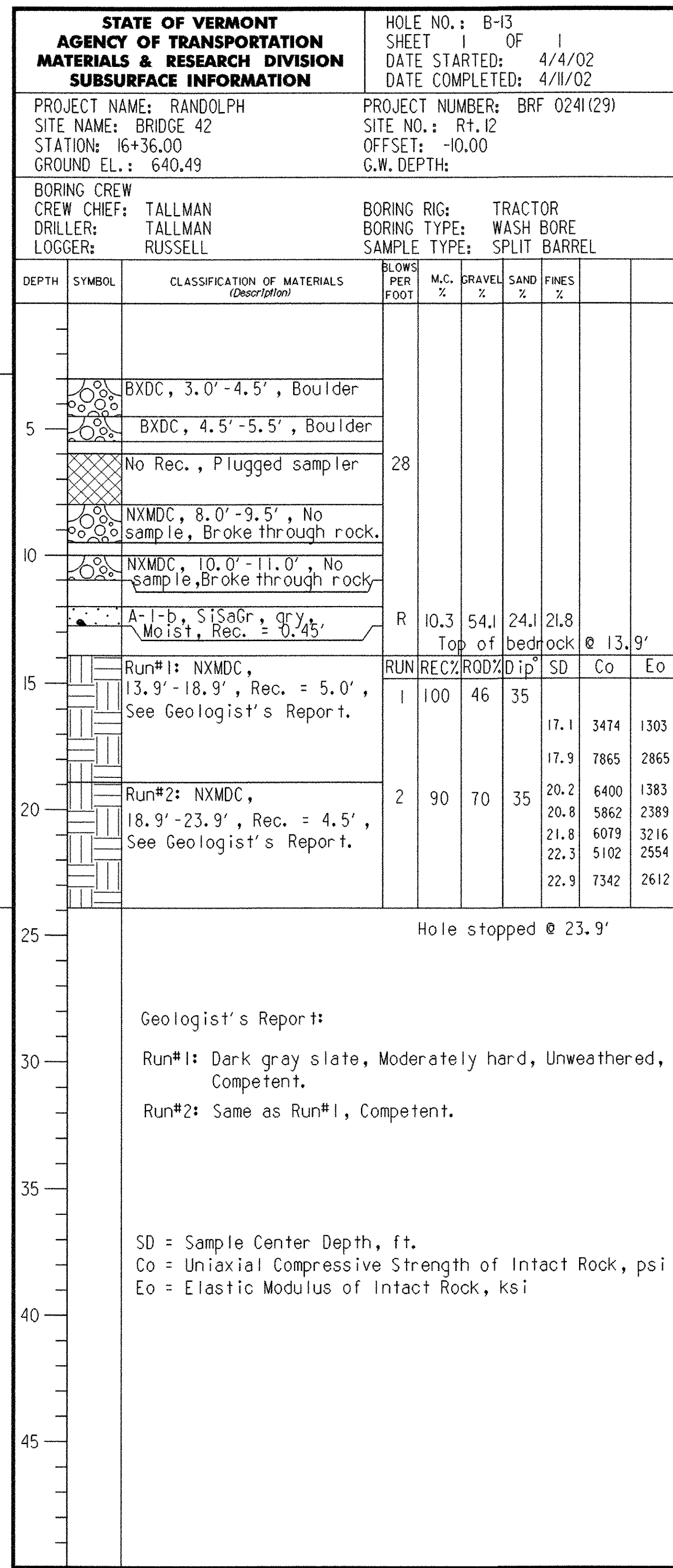


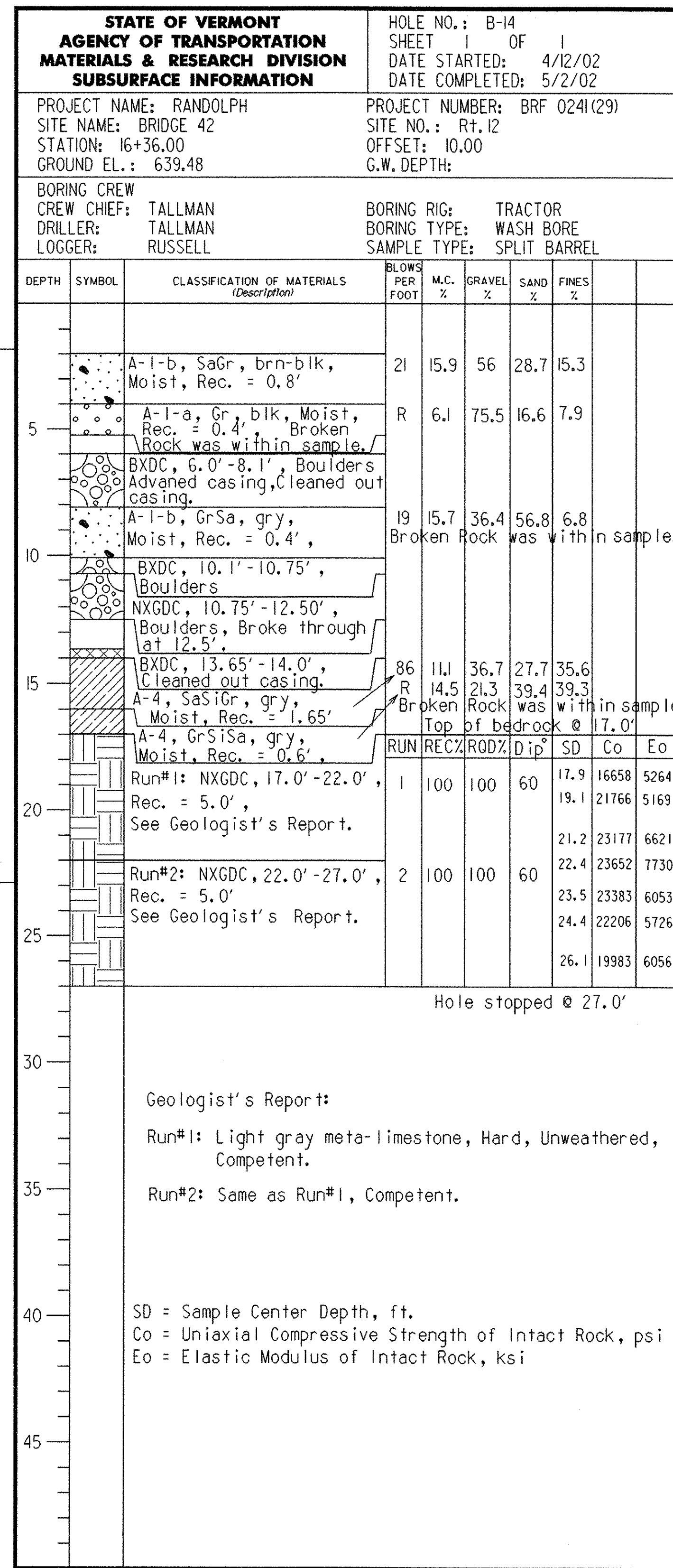
BOTTOM OF FOOTING ABUT. #1
ELEVATION = 653.00

ESTIMATED BOTTOM OF PILES ABUT. #1
ELEVATION = 613.00



BOTTOM OF PIER FOOTING
ELEVATION = 637.67

ESTIMATED BOTTOM OF DRILLED SHAFT
ELEVATION = 616.6



BOTTOM OF PIER FOOTING
ELEVATION = 637.67

ESTIMATED BOTTOM OF DRILLED SHAFT
ELEVATION = 616.6

BORING LOGS #5

PROJECT NAME:	RANDOLPH
PROJECT NUMBER:	BRF 0241 (29)
FILE NAME: /s/tr5/88]096/s]096bor.dgn	PLOT DATE: 29-AUG-2006
PROJECT LEADER: W. SYMONDS	DRAWN BY: J. TOUCHETTE
DESIGNED BY: W.B. SYMONDS	CHECKED BY: T. SUMNER
s]096bo6.i	SHEET 50 OF 135