

GPS CONTROL POINTS

HVCTRL # 1

STANDARD DISK STAMPED
Stoneleigh
N = 518944.653
E = 160131.789
ELEV. = 685.70

FROM THE WEST END OF VT 66 BRIDGE OVER 189 IN RANDOLPH, GO WEST FOR 1.8 MI. TO THE INTERSECTION OF STOCK FARM ROAD LEFT. TRAVEL SOUTHWARD ALONG STOCK FARM ROAD FOR 0.4 MI. TO A DRIVEWAY RIGHT. TURN RIGHT, GO WESTWARD FOR 0.05 MI. TO STONELEIGH EQUIPMENT BARN, SITE OF THE MARK ON THE MOWED PROMONTORY SOUTH OF THE BARN.

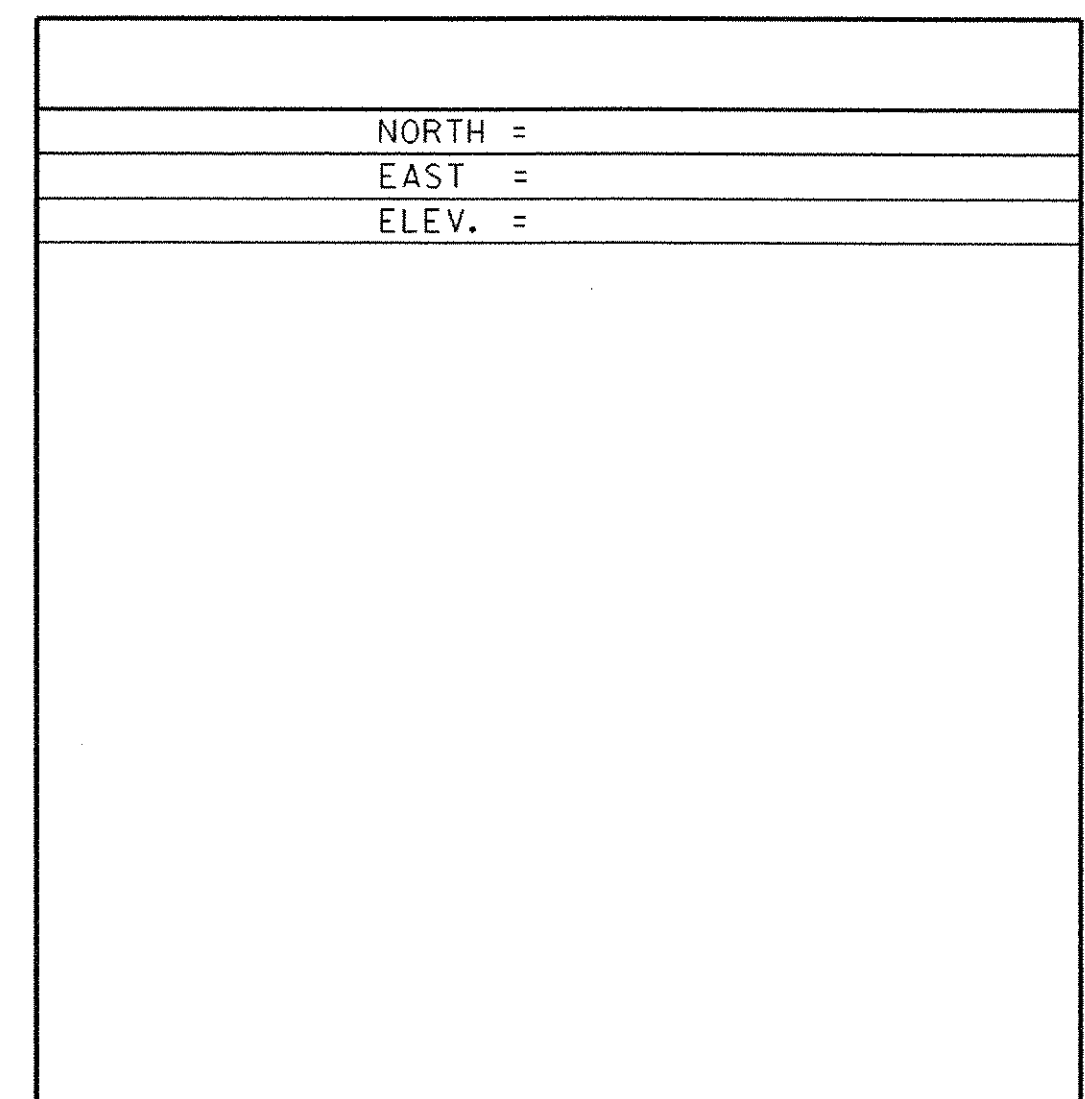
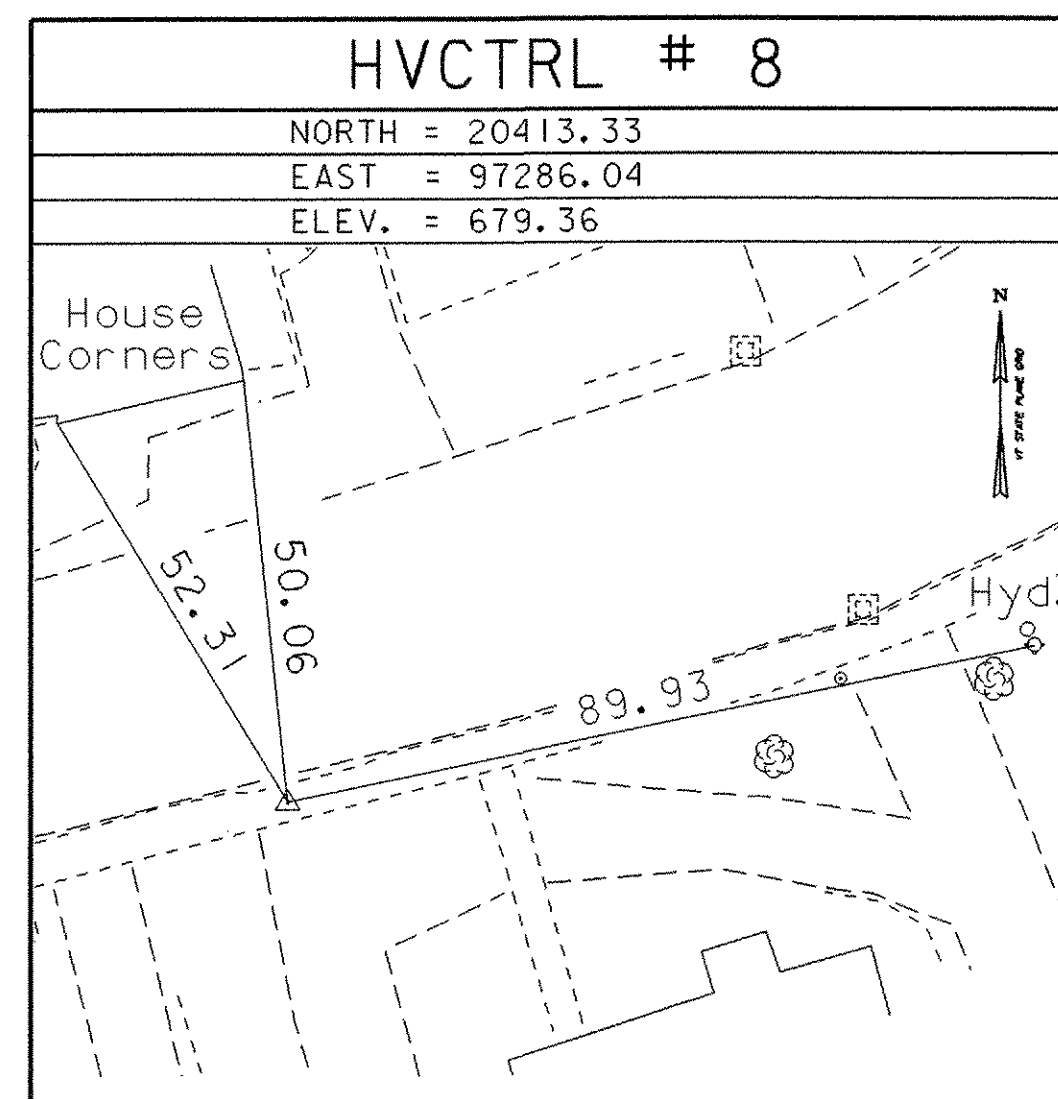
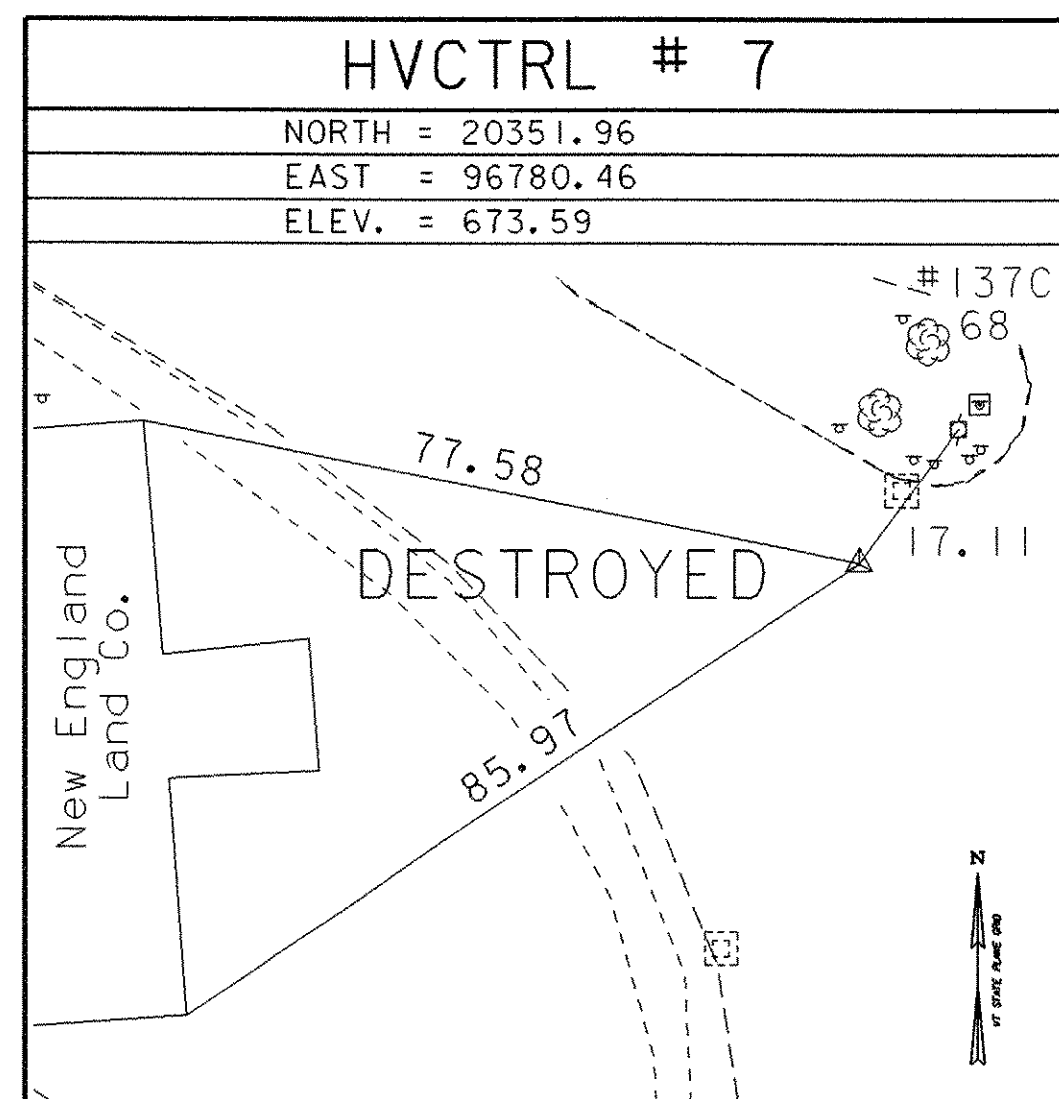
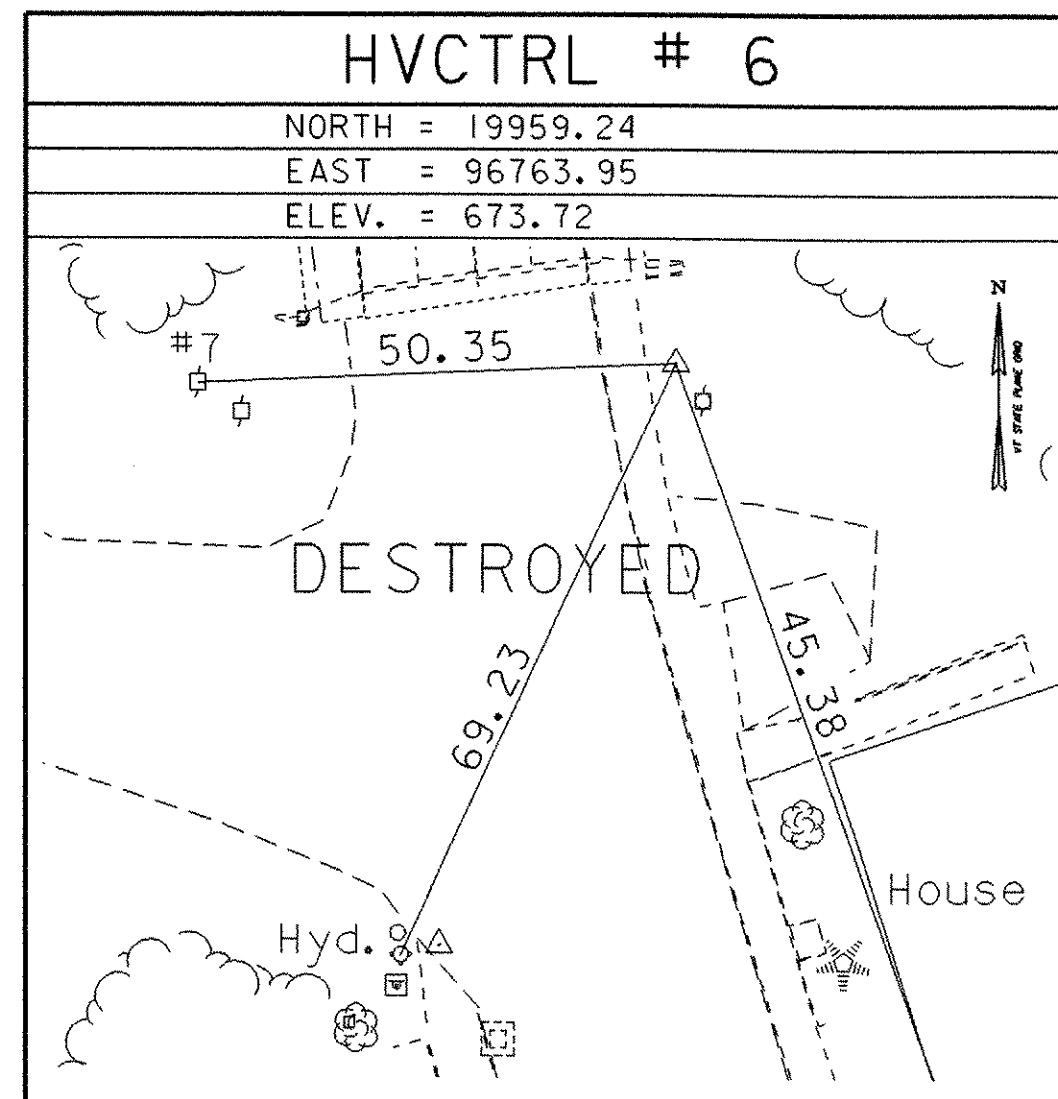
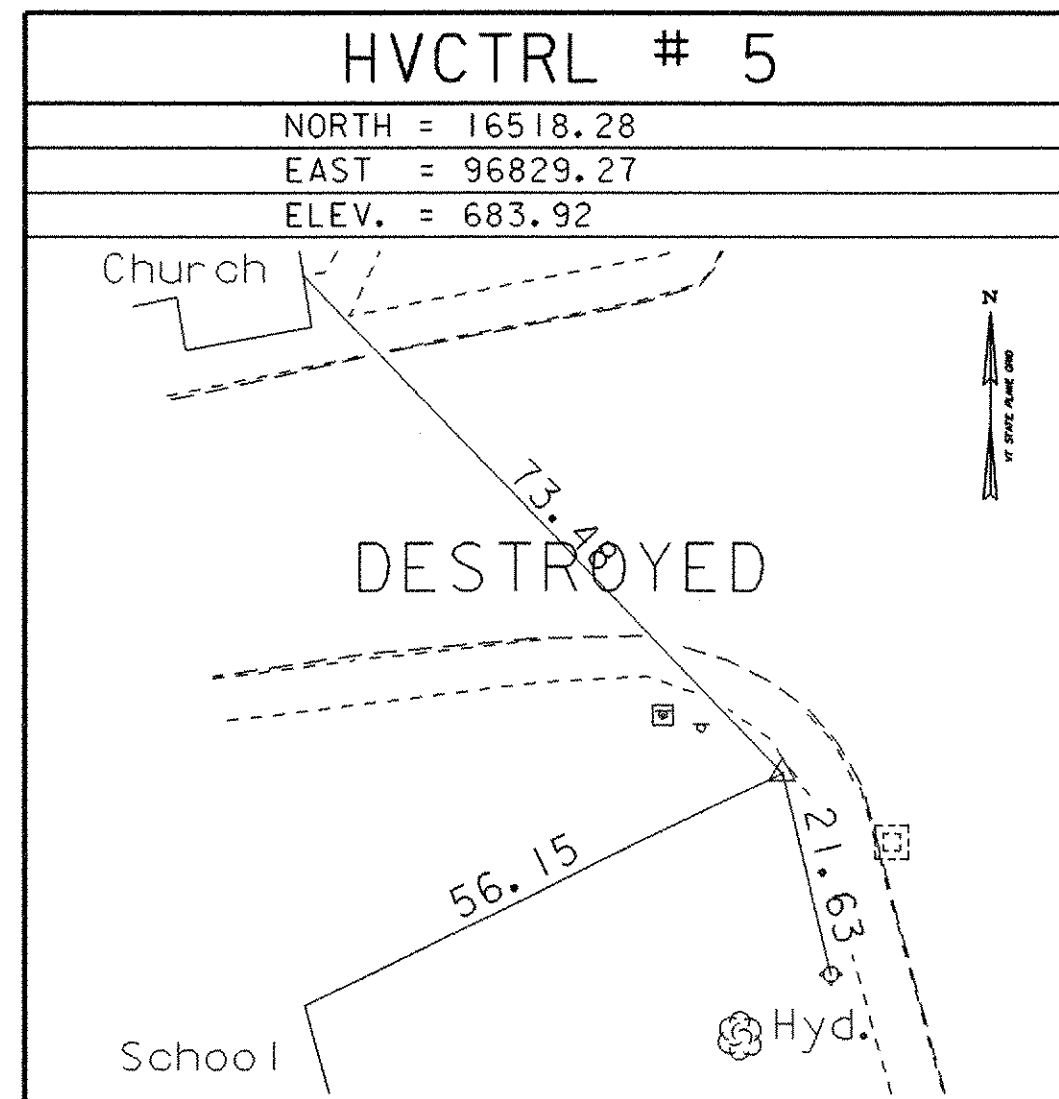
HVCTRL # 2

STANDARD DISK STAMPED
Stoneleigh Az
N = 520797.760
E = 1600128.861
ELEV. = 669.29

FROM THE WEST END OF VT 66 BRIDGE OVER 189 IN RANDOLPH, GO WEST FOR 1.9 MI. TO THE MARK ON THE LEFT AT THE NORTH END OF A GOLF COURSE. MARK IS 0.5 MI. EAST ALONG ROUTE 66 FROM ITS INTERSECTION WITH VT 12 IN RANDOLPH.

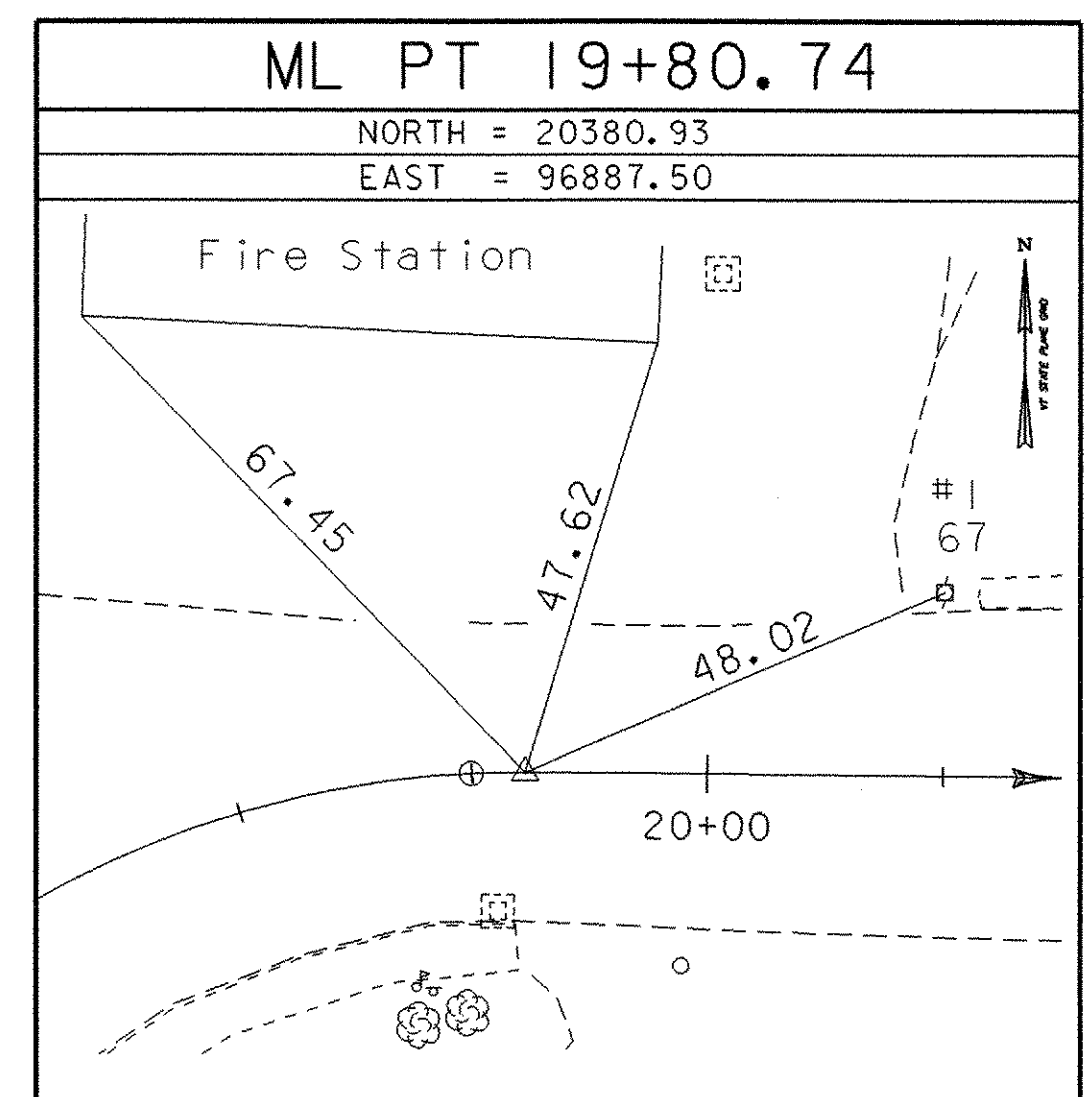
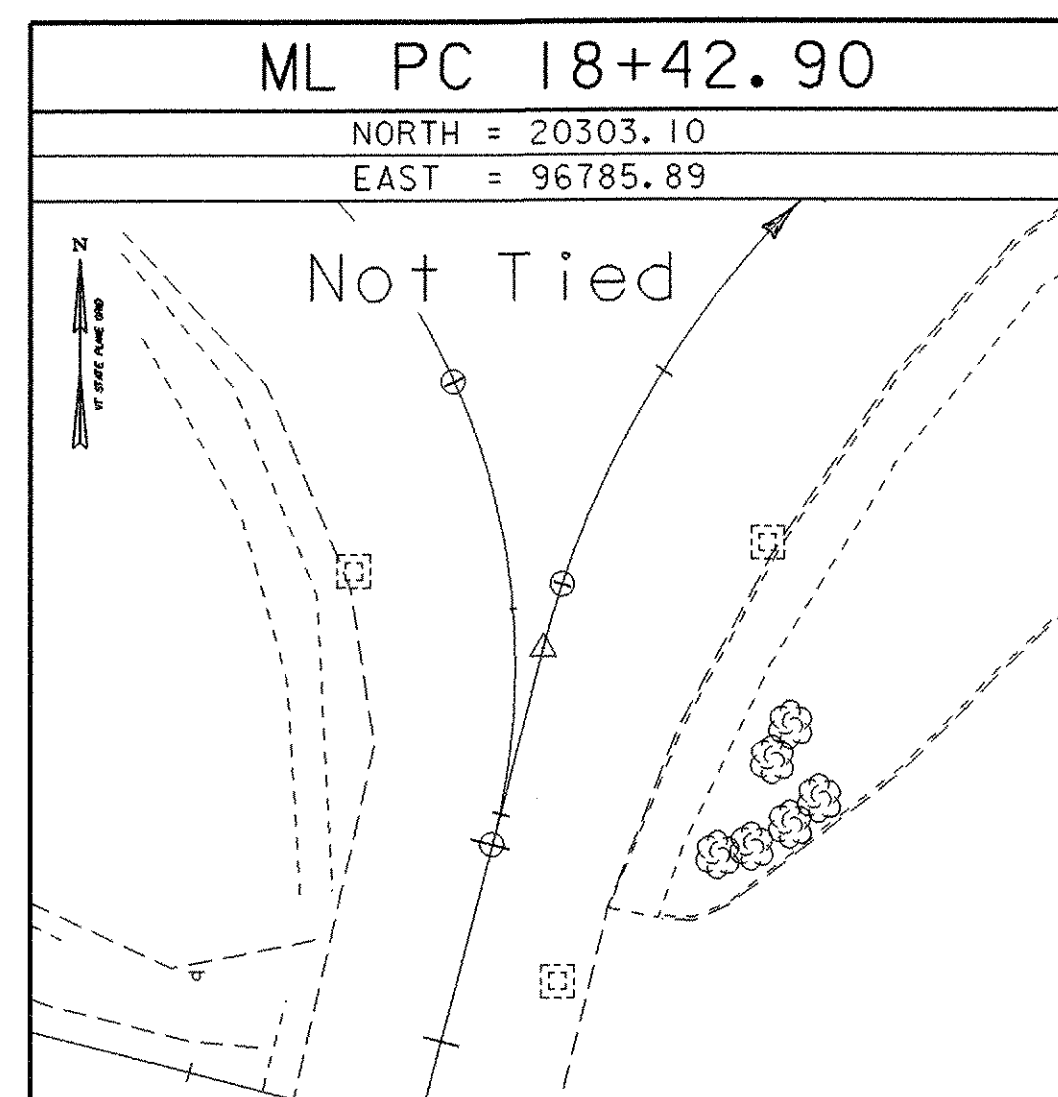
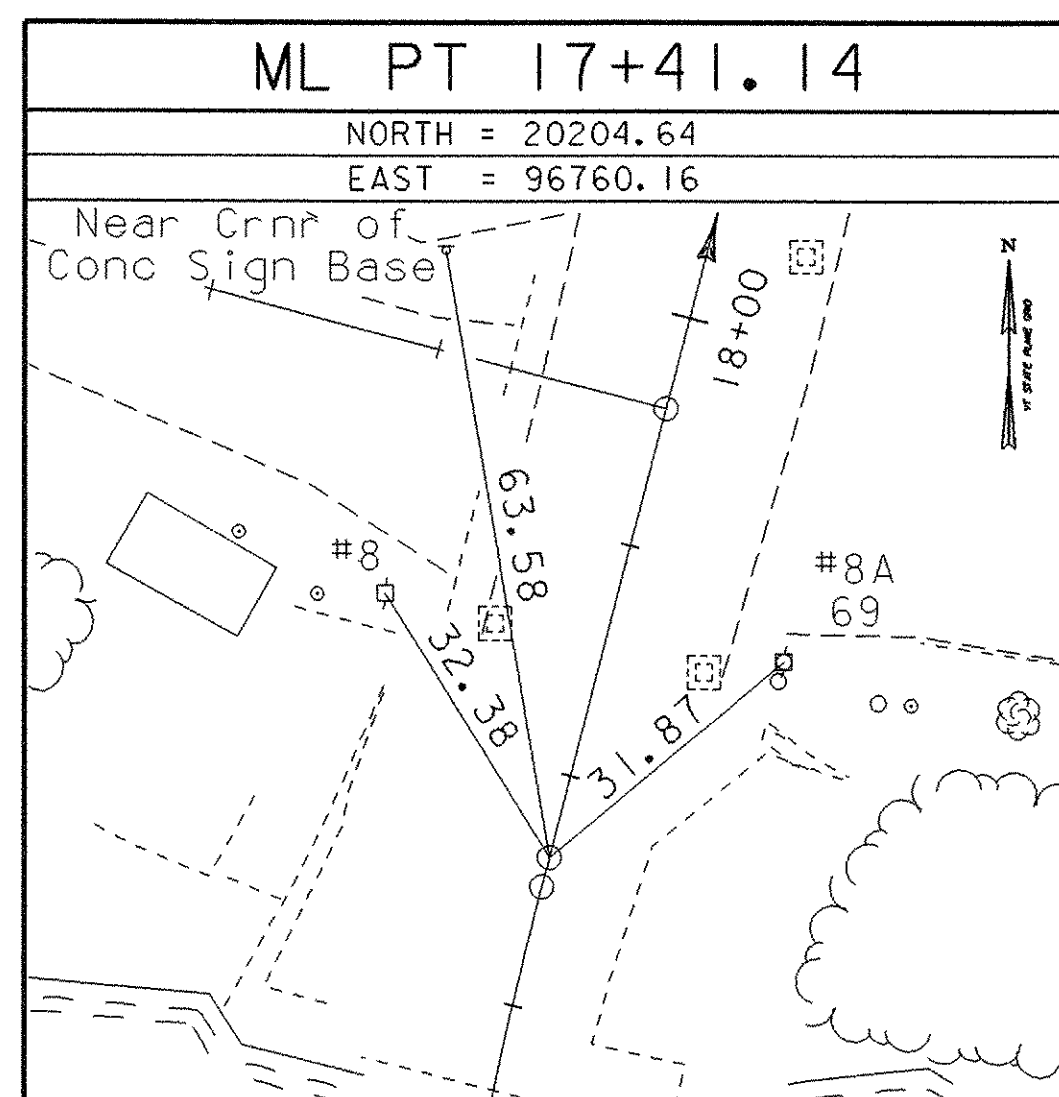
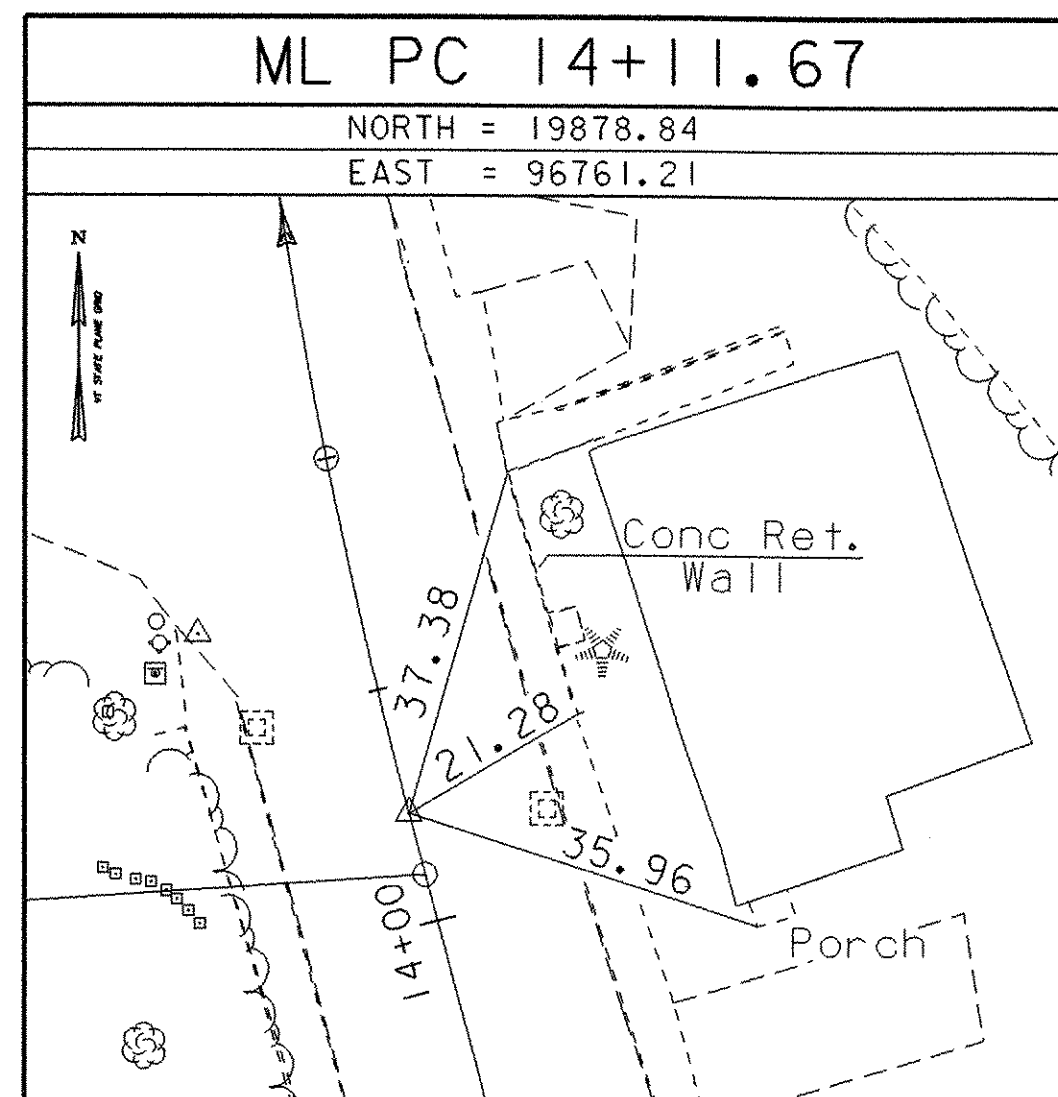
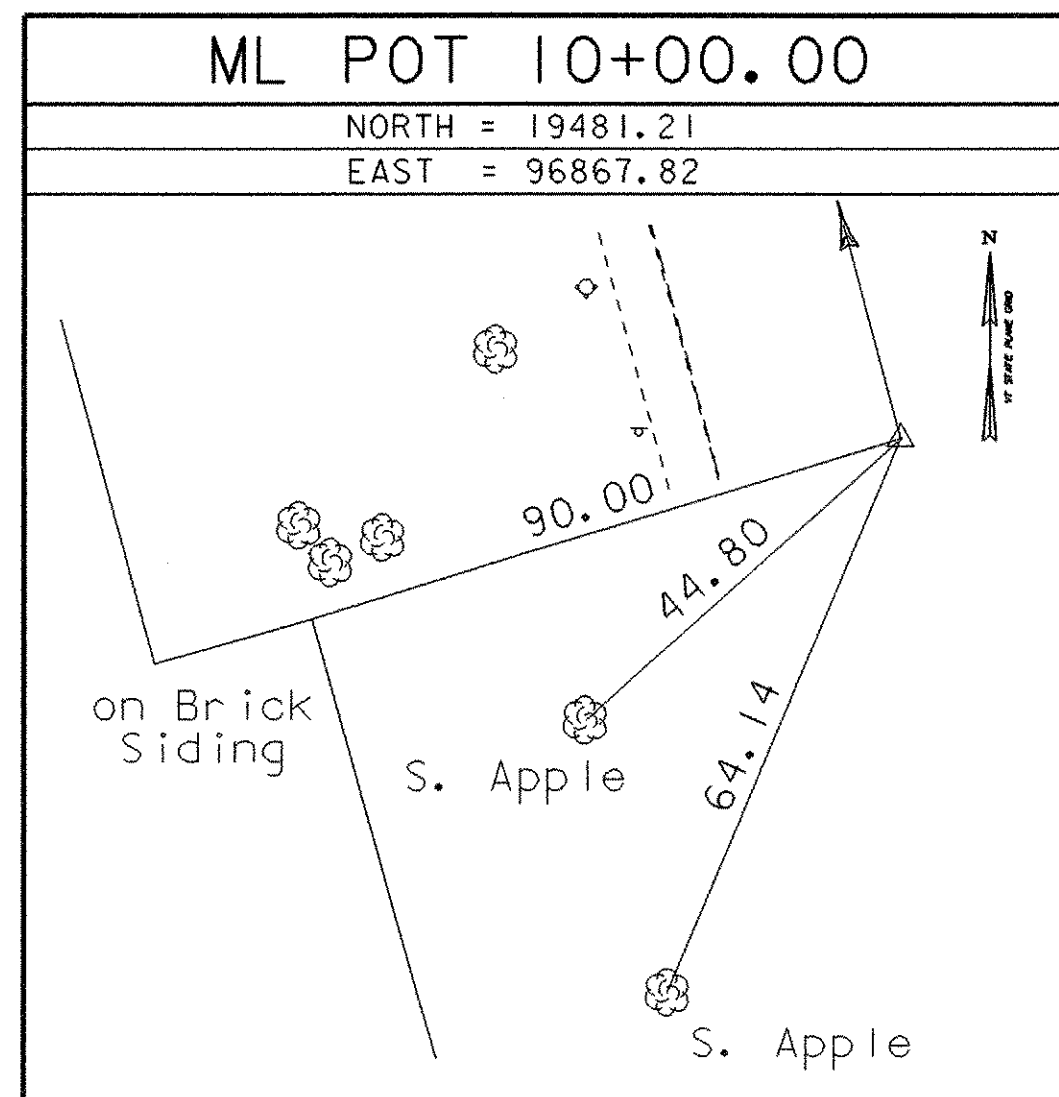
- DESCRIPTION PROVIDED BY VERMONT AGENCY OF TRANSPORTATION GEODETIC SURVEY UNIT
- TO ALLOW THE STATE PLANE COORDINATES TO FIT THE AGENCY DESIGN PLANE, SUBTRACT 500,000 FROM THE NORTHING AND SUBTRACT 1,500,000 FROM THE EASTING

TRAVERSE TIES



• MAIN TRAVERSE COMPLETED 03/08/93 by R. Gilman P.C. & T. Morse

ALIGNMENT TIES



• ALIGNMENT STAKED 08/1998 by R. Gilman P.C. & T. Companion

DATUM
VERTICAL NAD 88
HORIZONTAL NAVD 83
ADJUSTMENT compass

PROJECT NAME: Randolph
PROJECT NUMBER: BRF 024(29)
FILE NAME: 88J096/survey/xj096t1.dgn
PROJECT LEADER: W. SYMONDS
DESIGNED BY: SURVEY
sj096tie1.i
PLOT DATE: 29-AUG-2006
DRAWN BY: R. Bullock
CHECKED BY: SURVEY
SHEET 16 OF 135