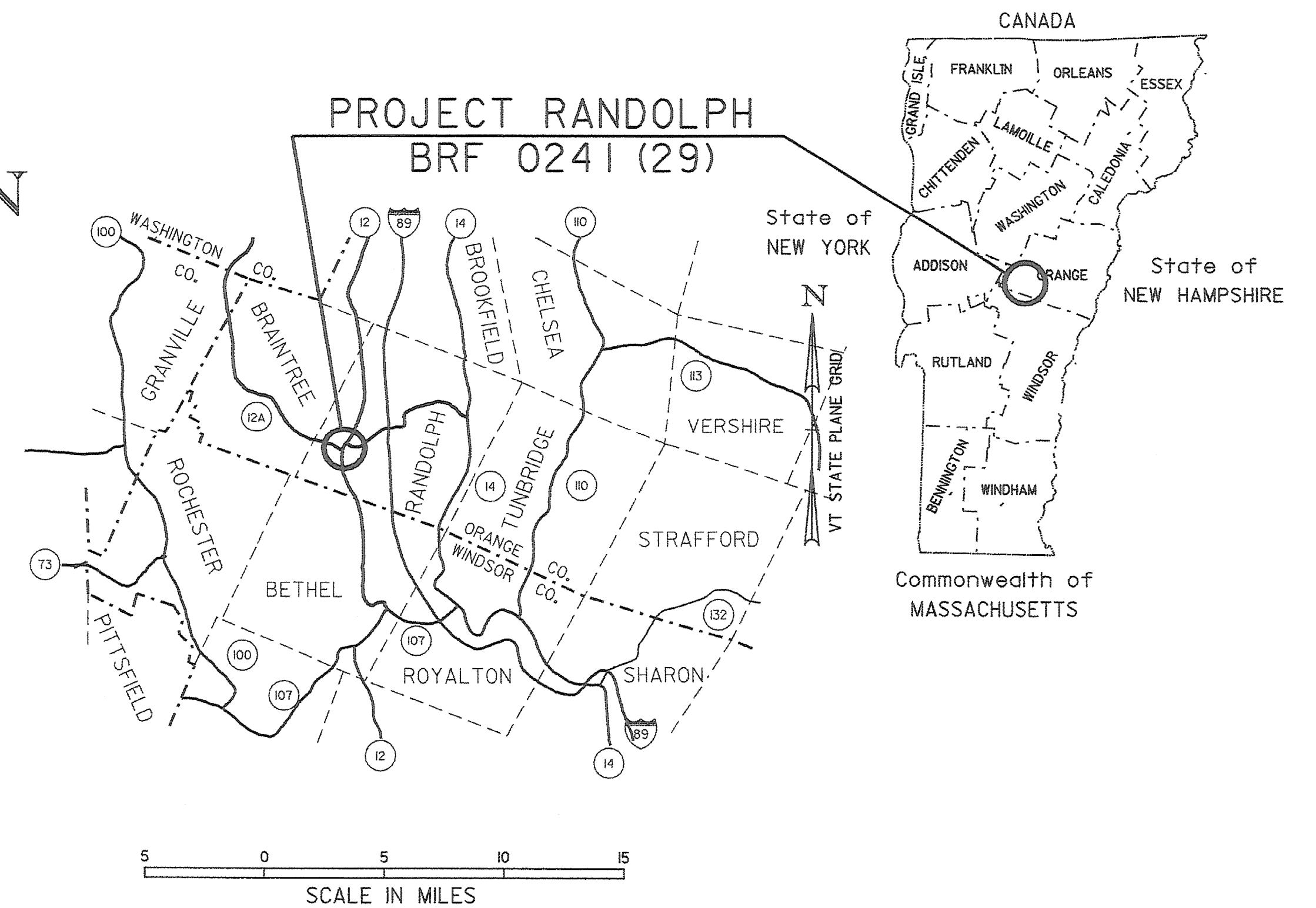


SEE SHEET 2 FOR INDEX OF SHEETS
& LIST OF STANDARDS

STATE OF VERMONT AGENCY OF TRANSPORTATION



PROPOSED IMPROVEMENT BRIDGE PROJECT TOWN OF RANDOLPH COUNTY OF ORANGE

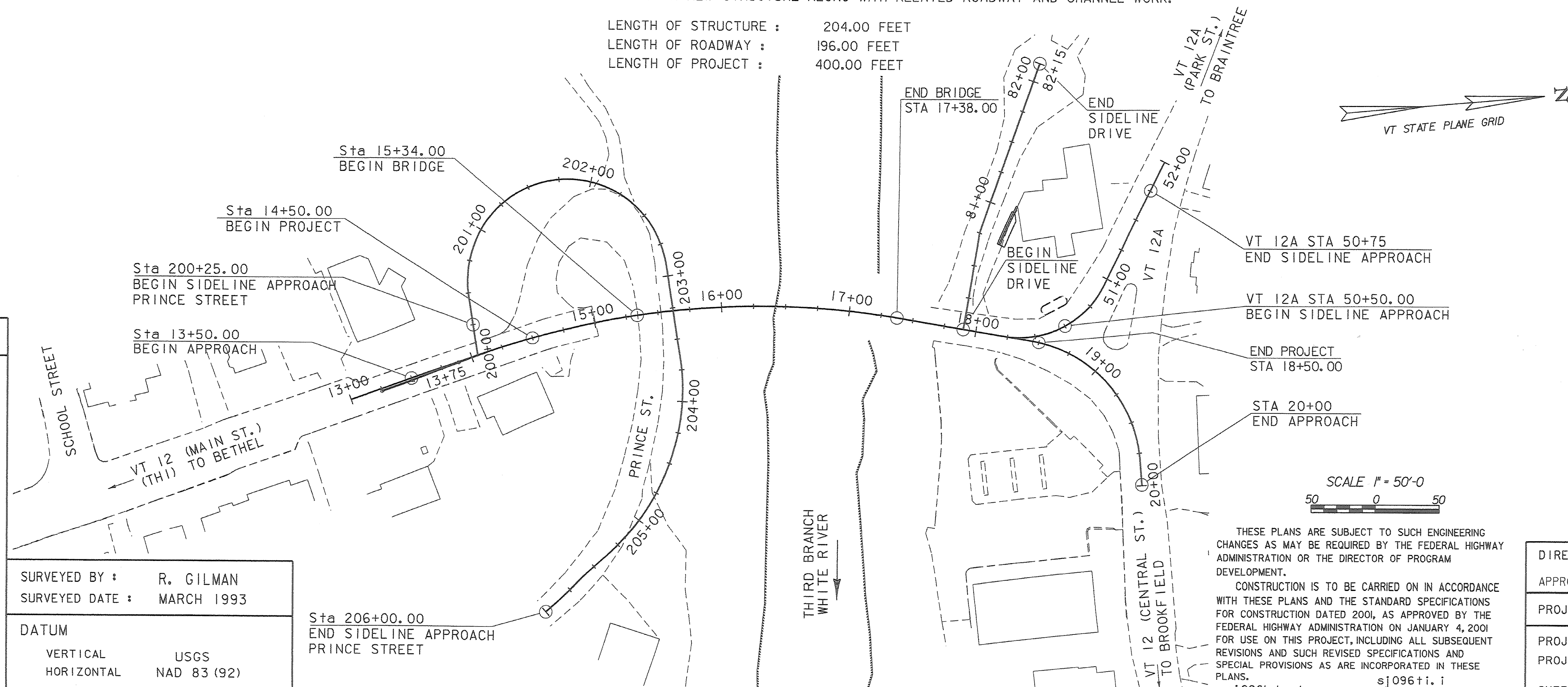


RECORD PLANS	
CONTRACTOR:	WINTERSET, INC. - LYNDONVILLE, VT
RESIDENT ENGINEER:	TOM CHASE
CONSTRUCTION BEGAN:	NOVEMBER 2, 2006
CONSTRUCTION COMPLETE:	OCTOBER 15, 2008
RECORD PLANS BY:	TOM CHASE & N. GARBACIK
I HEREBY CERTIFY THAT ALL THE CONSTRUCTION REQUIRED BY THIS SET OF DRAWINGS HAS BEEN ACCOMPLISHED AS INDICATED HEREIN.	
BY <u>Thomas A. Chase</u>	RESIDENT ENGINEER
DATE <u>02/04/10</u>	
NOTE: Any further information concerning final quantities, amounts or other details relative to this project may be found at Central Files in the electronic archives.	

ROUTE NO : VT 12 (CL 1, TH 1) MAJOR COLLECTOR BRIDGE NO : 42

PROJECT LOCATION : BEGINNING AT A POINT ON VT 12 (TH 1) APPROXIMATELY 0.07 MILES NORTH OF THE INTERSECTION OF VT 12 AND SCHOOL STREET AND PROGRESSING NORTHERLY ALONG VT 12 FOR 0.08 MILES.
PROJECT DESCRIPTION : CONSTRUCTION OF A NEW STRUCTURE ALONG WITH RELATED ROADWAY AND CHANNEL WORK.

LENGTH OF STRUCTURE : 204.00 FEET
LENGTH OF ROADWAY : 196.00 FEET
LENGTH OF PROJECT : 400.00 FEET



CONVENTIONAL SYMBOLS	
COUNTY LINE	
TOWN LINE	
LIMITS OF ACCESS	
POINT OF ACCESS	
FENCE LINE	
STONE WALL	
TRAVELED WAY	
GUARD RAIL	
RAILROAD	
SURVEY LINE	
CULVERT	
POWER POLE	
TELEPHONE POLE	
TREES	
CONTROL OF ACCESS	
PROPERTY LINE	
R.O.W. TAKING LINE	
SLOPE RIGHTS	
TOP OF CUT	
TOE OF SLOPE	

SURVEYED BY : R. GILMAN
SURVEYED DATE : MARCH 1993
DATUM
VERTICAL USGS
HORIZONTAL NAD 83 (92)

THESE PLANS ARE SUBJECT TO SUCH ENGINEERING CHANGES AS MAY BE REQUIRED BY THE FEDERAL HIGHWAY ADMINISTRATION OR THE DIRECTOR OF PROGRAM DEVELOPMENT.
CONSTRUCTION IS TO BE CARRIED ON IN ACCORDANCE WITH THESE PLANS AND THE STANDARD SPECIFICATIONS FOR CONSTRUCTION DATED 2001, AS APPROVED BY THE FEDERAL HIGHWAY ADMINISTRATION ON JANUARY 4, 2001 FOR USE ON THIS PROJECT, INCLUDING ALL SUBSEQUENT REVISIONS AND SUCH REVISED SPECIFICATIONS AND SPECIAL PROVISIONS AS ARE INCORPORATED IN THESE PLANS.
s\j096tdr.dgn PLOTTED 10-AUG-2006

DIRECTOR OF PROGRAM DEVELOPMENT
APPROVED Richard Fitzmaurice DATE 8/19/06
PROJECT MANAGER : WAYNE SYMONDS
PROJECT NAME : RANDOLPH
PROJECT NUMBER : BRF 0241 (29)
SHEET 1 OF 135 SHEETS