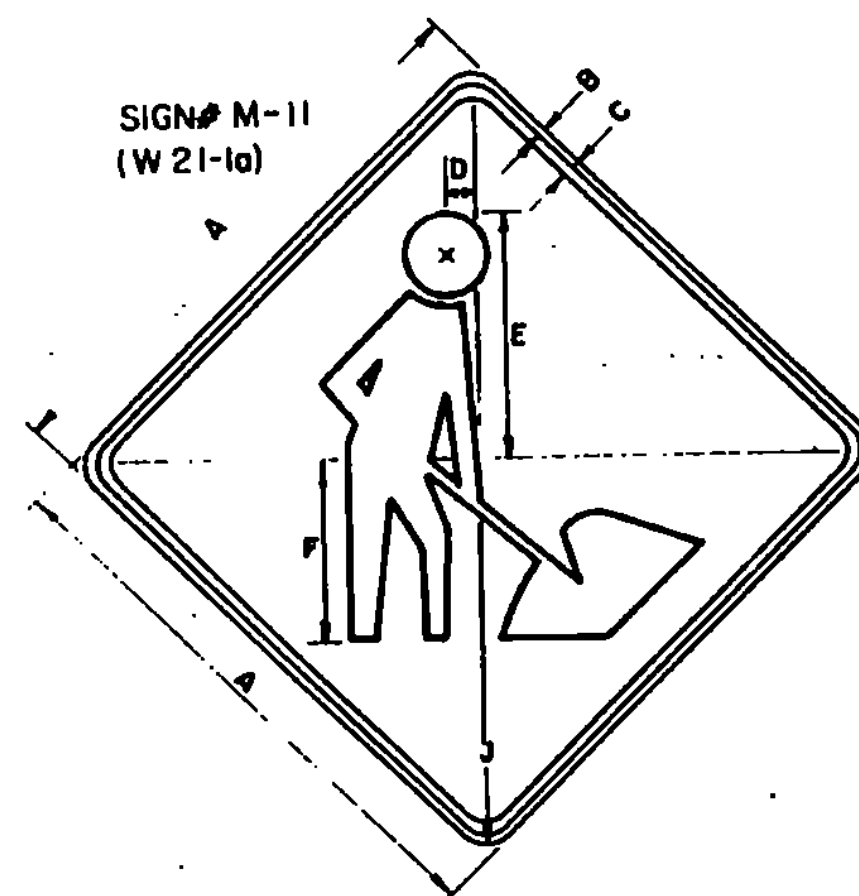
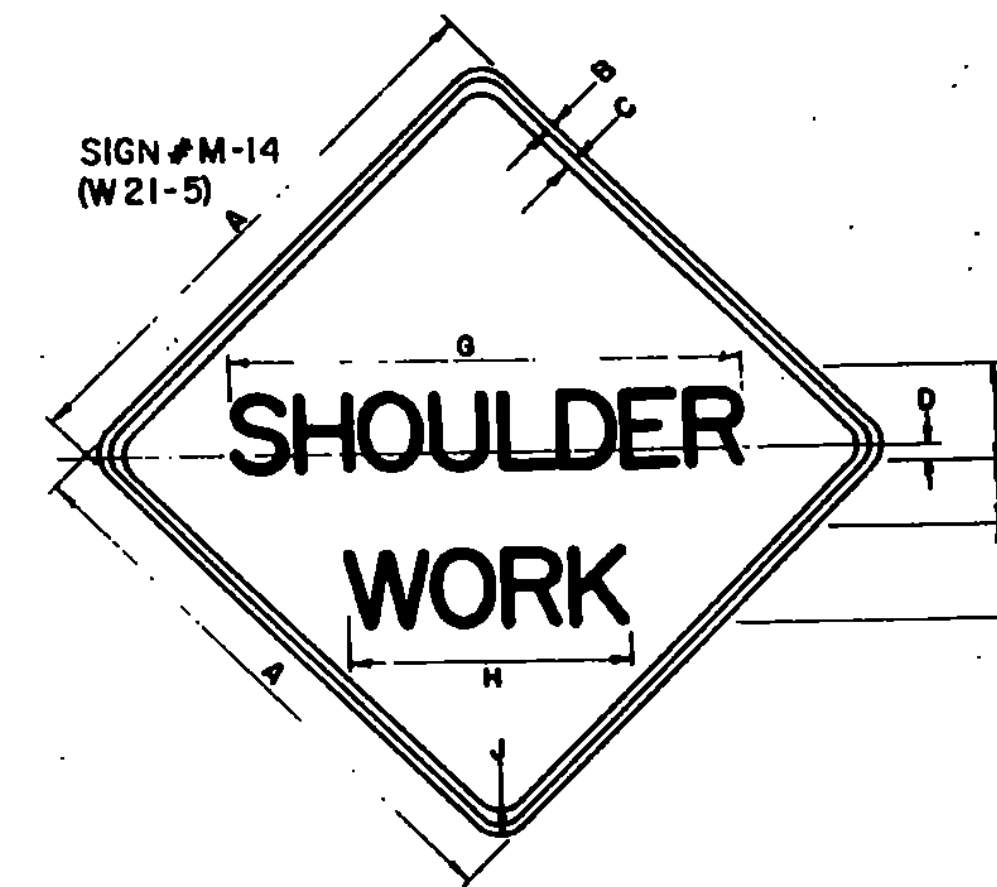


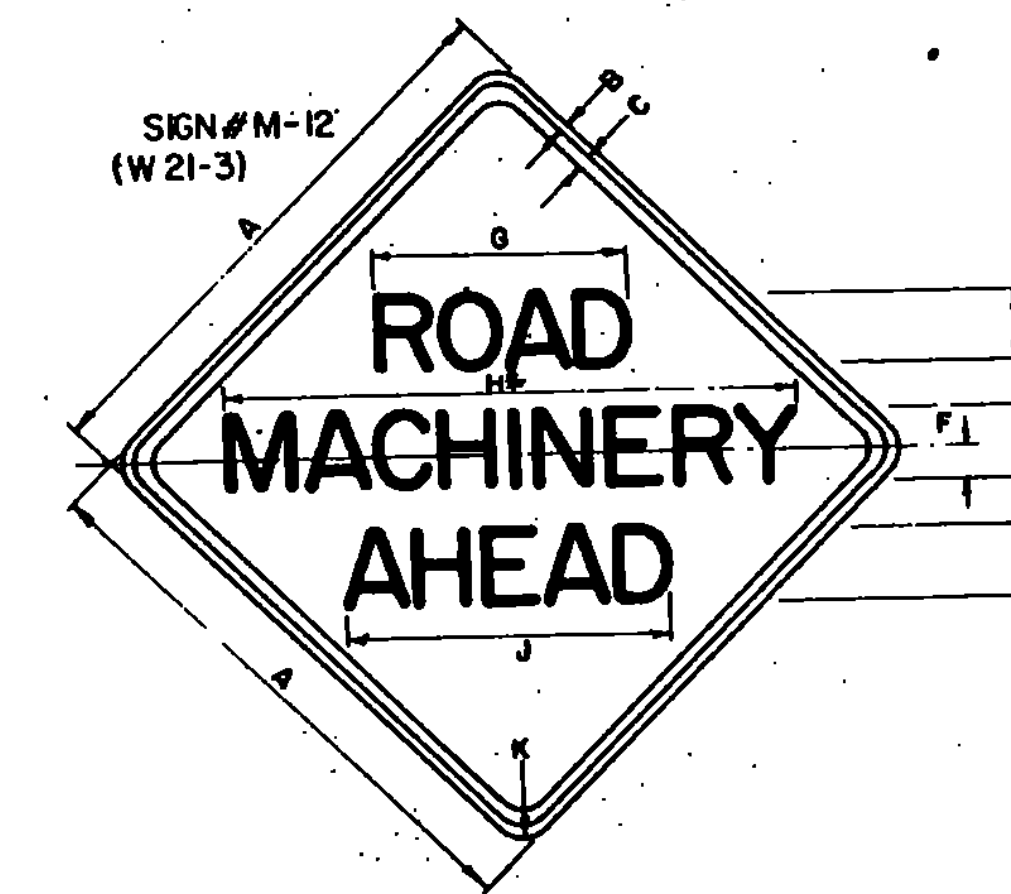
4-LANE DIVIDED HIGHWAY  
MEDIAN MAINTENANCE



SIGN	DIMENSIONS (INCHES)									
	A	B	C	D	E	F	G	H	J	K
2 LANE	36	5/8	7/8	2-1/4	5-7/8	12			2 1/4	
4 LANE	48	3/4	1 1/4	3	23/8	16			3	

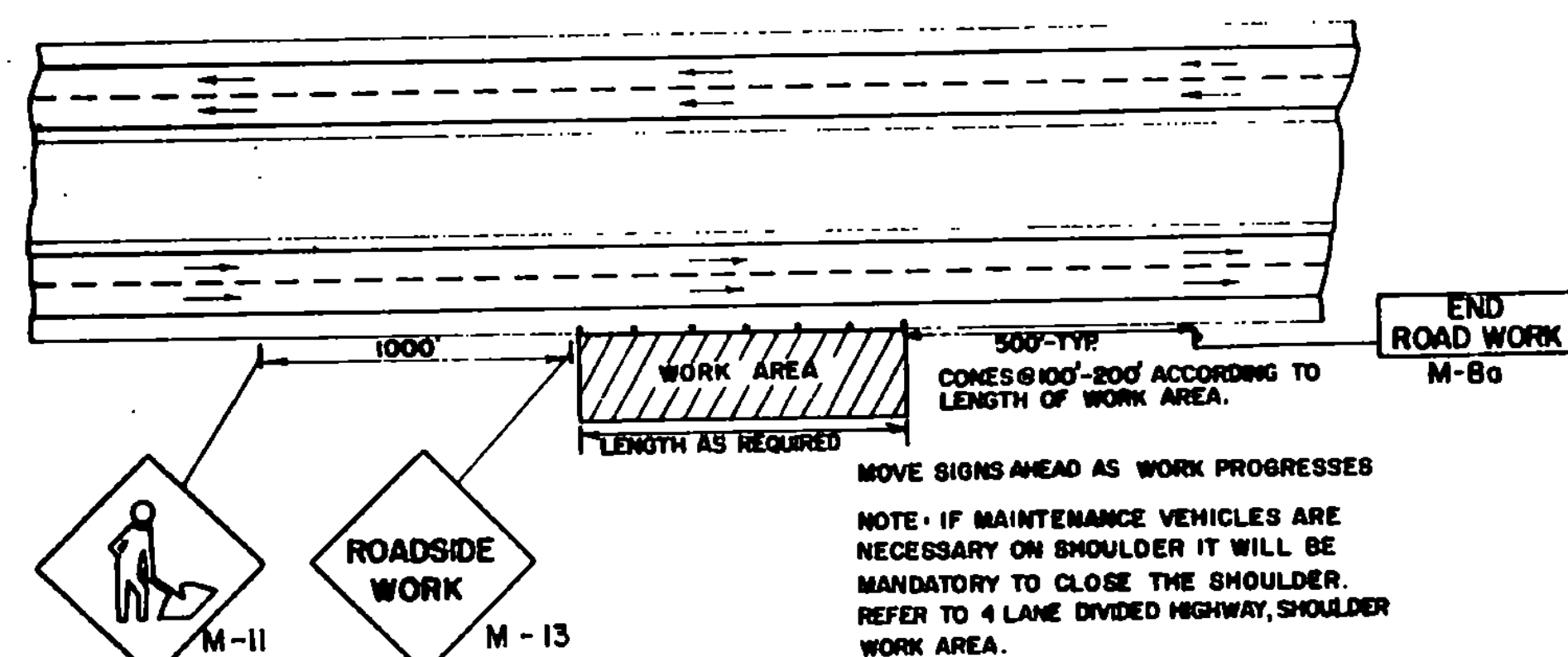


SIGN	DIMENSIONS (INCHES)									
	A	B	C	D	E	F	G	H	J	K
2 LANE	36	5/8	7/8	1	5-D	3 1/2	34	17	2 1/4	
4 LANE	48	3/4	1 1/4	1	7-C	4	36	20	3	

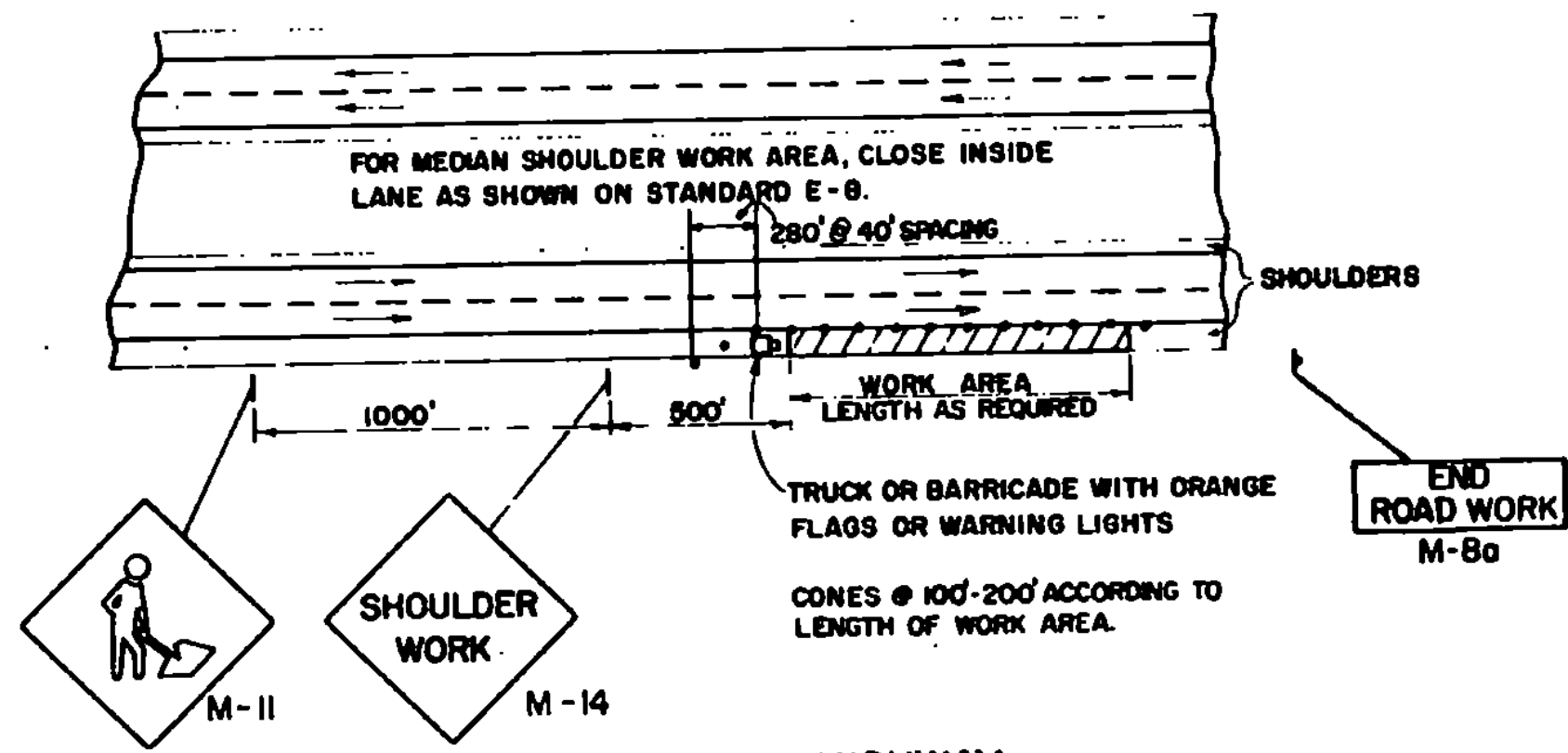


\*REDUCE SPACING BY 40%

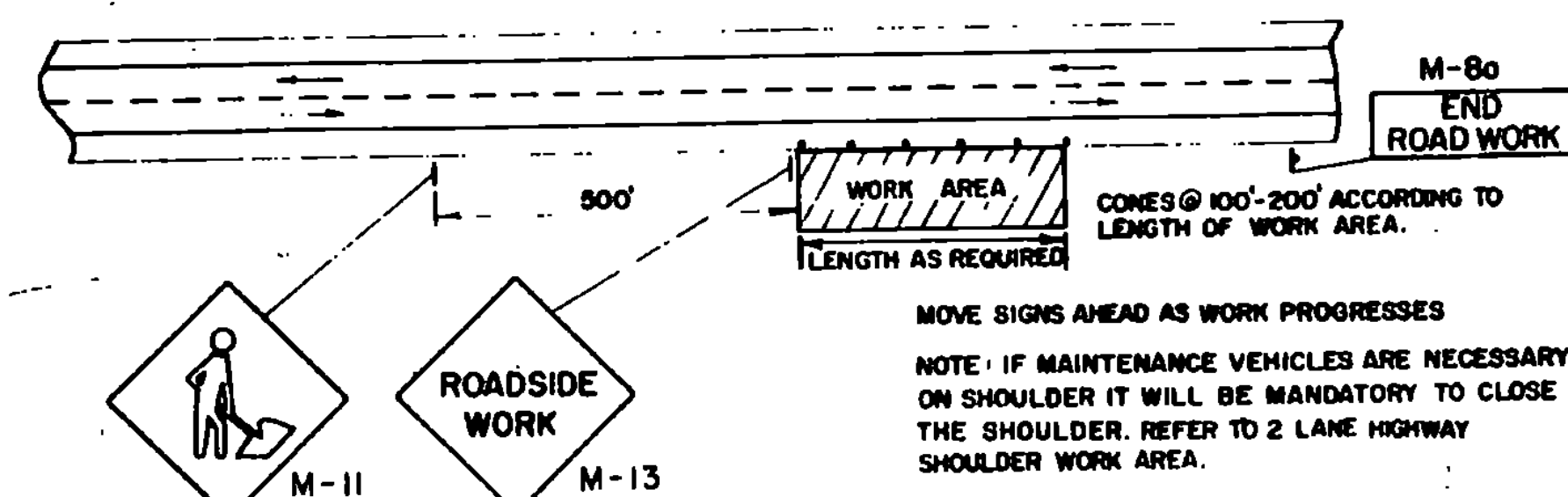
SIGN	DIMENSIONS (INCHES)									
	A	B	C	D	E	F	G	H	J	K
2 LANE	36	5/8	7/8	5-D	4	2-1/2	17/4	34	2 1/4	
4 LANE	48	3/4	1 1/4	7-D	5	3-1/2	24	48	3 1/4	



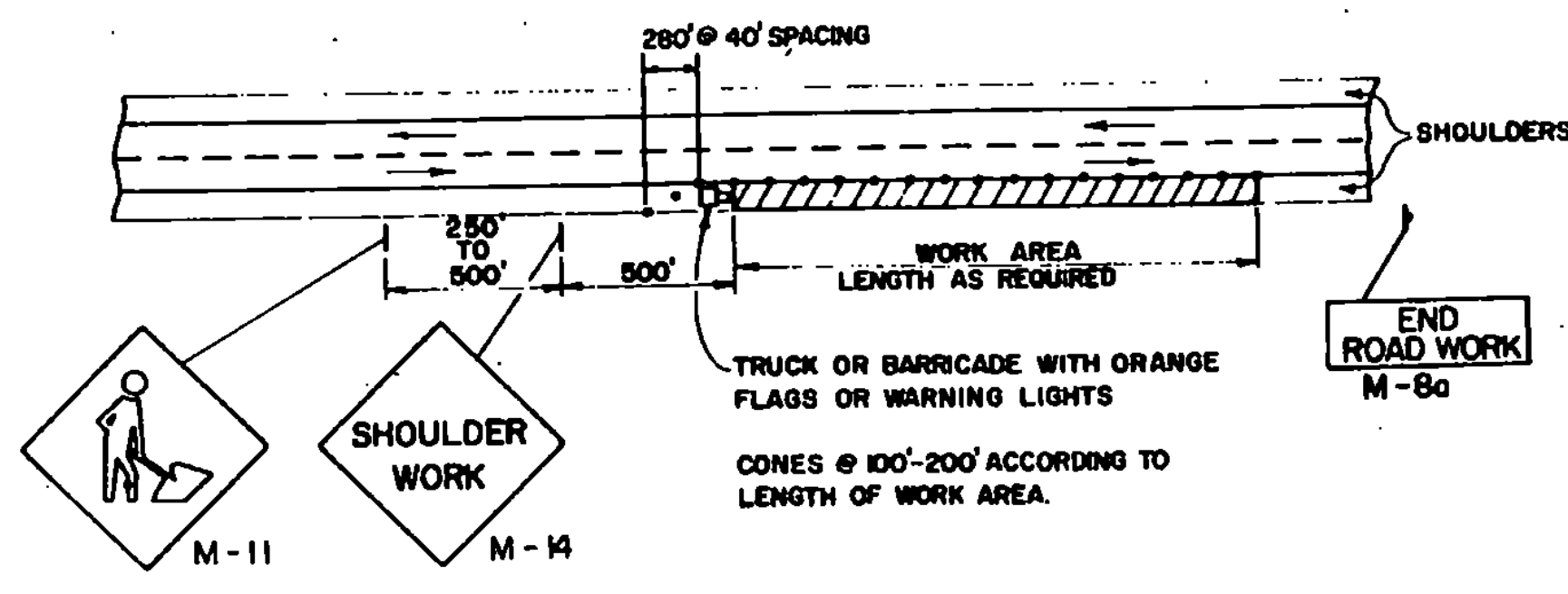
4-LANE DIVIDED HIGHWAY  
MAINTENANCE OUTSIDE RIGHT SHOULDER



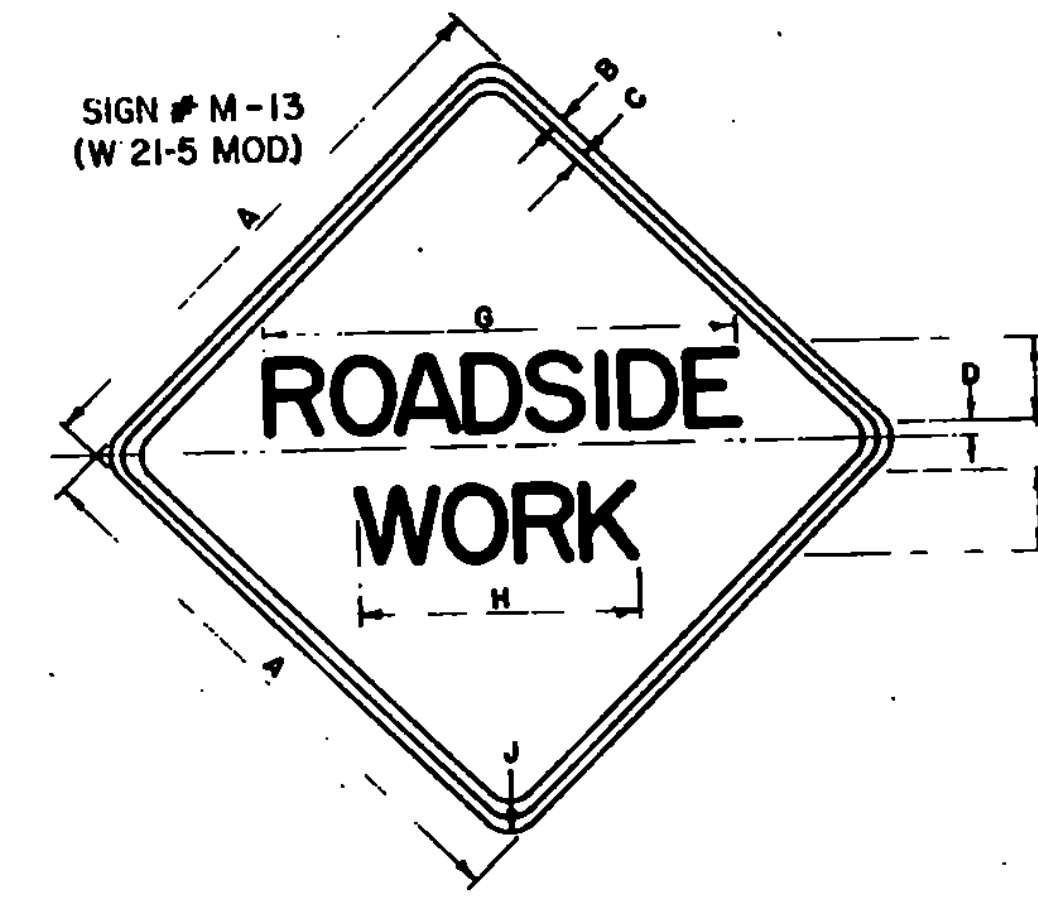
4-LANE DIVIDED HIGHWAY  
SHOULDER WORK AREA



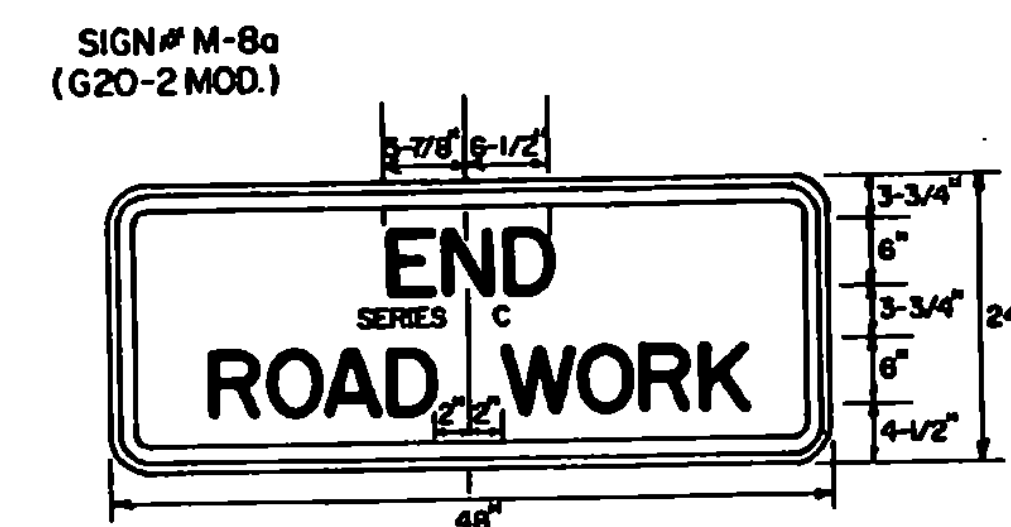
2-LANE HIGHWAY  
MAINTENANCE OUTSIDE SHOULDER



2-LANE HIGHWAY  
SHOULDER WORK AREA



SIGN	DIMENSIONS (INCHES)									
	A	B	C	D	E	F	G	H	J	K
2 LANE	36	5/8	7/8	1/2	5-D	3 1/2	34	17	2 1/4	
4 LANE	48	3/4	1 1/4	1	7-C	4	36	20	3	



**Reflectionization**  
All reflective material shall consist of encapsulated lens reflective sheeting. The text and borders may be screened, lettering film, or hand painted.

**Colors**  
The warning signs shown on this sheet shall have a black text and border on a reflectorized orange background. The orange shall conform with the standard colors adopted by the American Association of State Highway and Transportation Officials and approved by the U.S. Dept. of Transportation, Federal Highway Administration.

**Text Design**  
Letters, spacing, and text dimensions shall conform with the standard alphabets and design prescribed in the Manual on Uniform Traffic Control Devices.

**Specifications**  
Warning signs shall meet the standard state specifications for traffic signs.

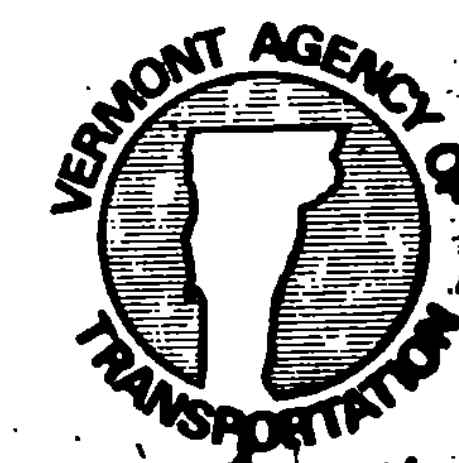
**Sign Base Material**  
The sign base material used for the warning signs shown on this sheet may be of any of the following, with minimum thickness as noted:

(1) Flat Sheet Aluminum	0.100	0.125	inches
(2) High Density Overlay Plywood	5/8	3/4	inches
(3) Galvanized Sheet Steel	14	12	gauge

**REVISIONS & CORRECTIONS**  
FEB. 29, 1972 - REVISED PER DIRECTION OF THE FEDERAL HIGHWAY ADMINISTRATION.  
MAY 14, 1974 - REFLECTIVE MATERIAL CHANGE.  
JUNE 6, 1977 - REFLECTIVE MATERIAL NOTE CHANGED.  
JUNE 6, 1977 - SIGN S, REFERENCED TO NUMBERS IN M.U.T.C.D.  
AUG. 10, 1977 - PERSON WORKING SIGN CHANGED TO SYMBOL.  
DEC. 9, 1981 - MINOR SIGN DIMENSION CHANGES.  
FEB. 8, 1988 - UPDATED TO 1986 SPECIFICATIONS

APPROVED \_\_\_\_\_  
DATE Jan 26, 1972  
P. H. Arnold  
CHIEF ENGINEER  
E. H. O'Brien  
ASST. CHIEF ENGINEER  
G. M. Lane  
HIGHWAY ENGINEER

TRAFFIC SIGNS  
TYPICAL MINOR MAINTENANCE OPERATION  
APPROACH SIGNS



STANDARD  
E-10