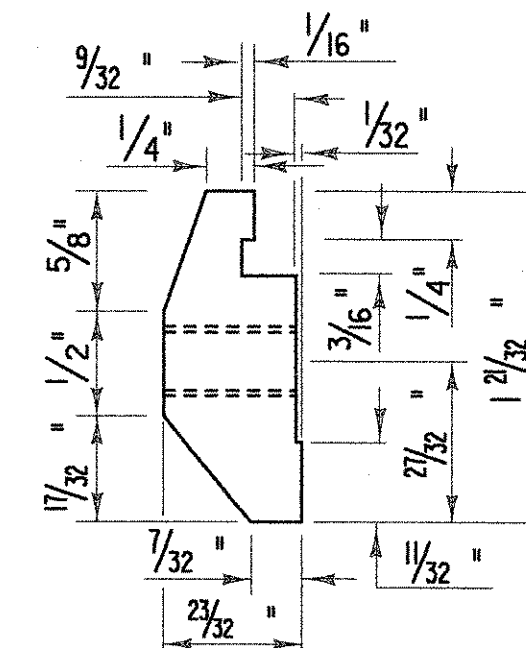
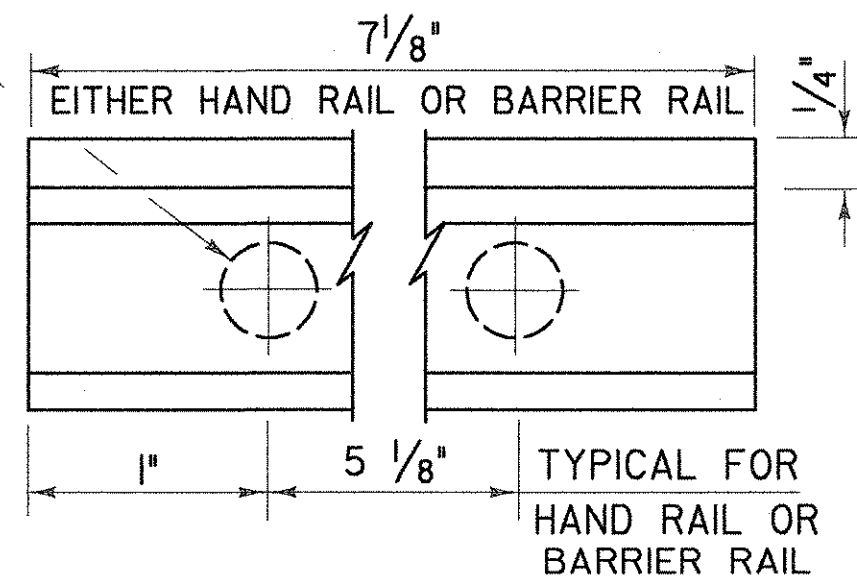


(2) 1/2" - 13 UNC THREADED HOLES FOR (2) 1/2" - 13 UNC X 1" STAINLESS STEEL HEX HEAD BOLTS WITH 1/16" O. D. X 1 1/32" I. D. X 3/32" THICK ALUMINUM WASHERS.



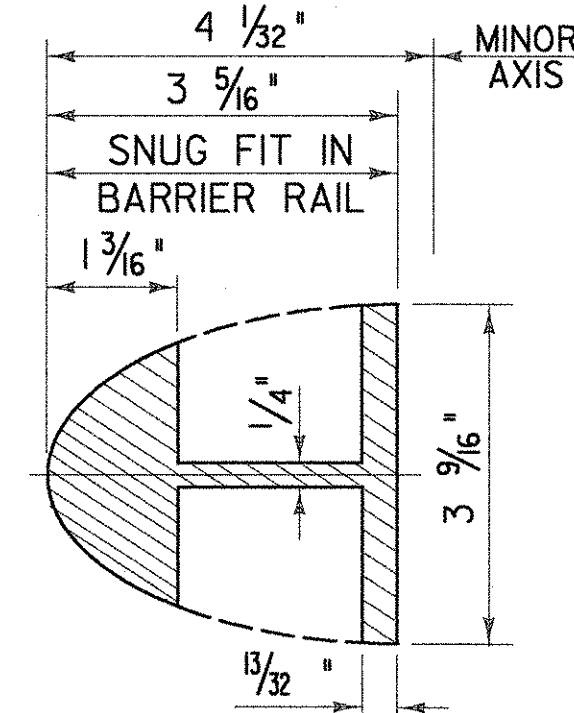
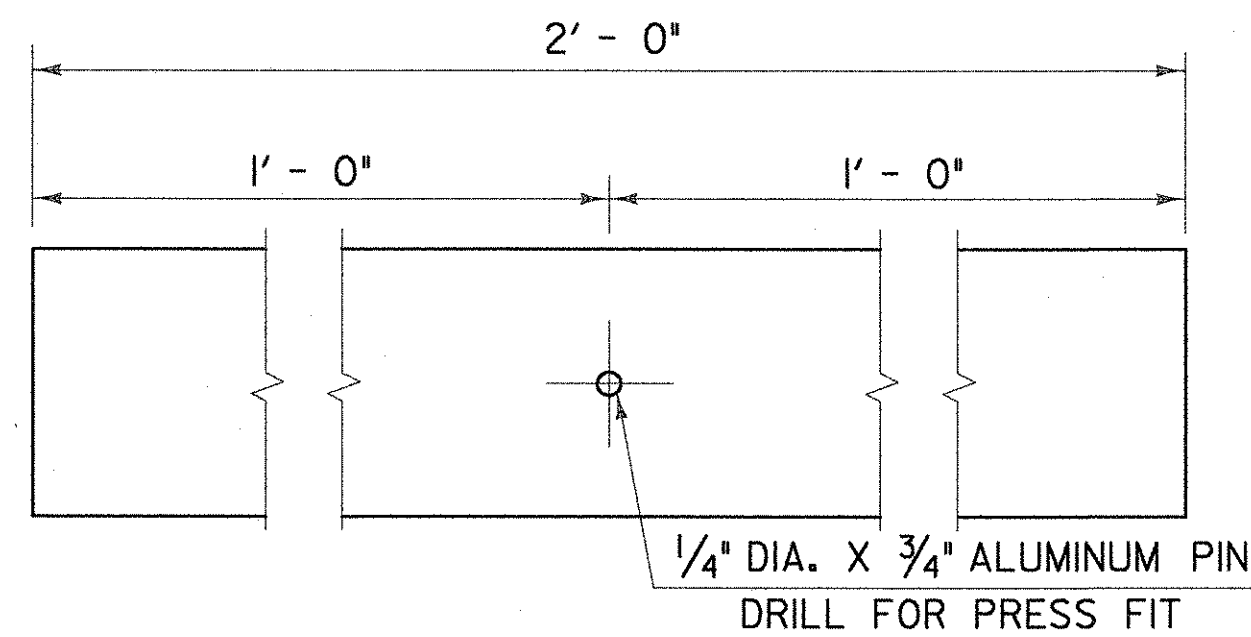
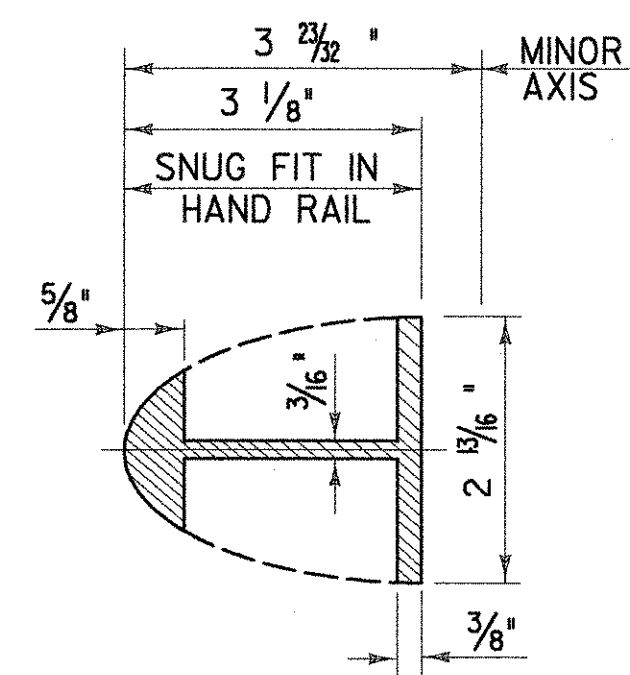
NOTES

1. ALUMINUM POSTS, SPLICE BARS, CONNECTION BARS AND RAILS SHALL CONFORM TO ASTM B221 ALLOY 6061-T6 OR ALLOY 6351-T5. MINIMUM ALLOWABLE STRESS: F = 35,000 PSI.
2. ALUMINUM RAIL END CAPS SHALL CONFORM TO ASTM B26 ALLOY 356-T6.
3. WELDING SHALL CONFORM TO THE REQUIREMENTS OF SUBSECTION 506.10 USING THE GMAW-INERT GAS PROCESS AND AWS ER 5356 ELECTRODE WIRE.
4. WHENEVER FEASIBLE BARRIER RAIL AND HAND RAIL SECTIONS, SHALL BE FULL LENGTH SECTIONS (40' ±) AND WHEN POSSIBLE SHALL BE ATTACHED TO THREE POSTS. RAILS SHALL BE SPLICED INTERMITTENTLY AS REQUIRED. SPLICES SHALL OCCUR WITHIN THE SAME PANEL.
5. ENDS OF RAILS SHALL BE CUT SQUARE AND GROUND FREE OF BURRS OR RAGGED EDGES. EXPOSED ENDS SHALL BE CAPPED.
6. EXTRUDED SECTIONS ARE DETAILED TO COMPLY WITH CURRENT AASHTO-AGC-ARTBA STANDARDS. MINOR VARIATIONS OF THE DETAILS SHOWN MAY BE CONSIDERED PROVIDING THEY DO NOT REDUCE THE STRENGTH CAPACITY OF THE RAIL SYSTEM.
7. ALUMINUM WASHERS SHALL BE ASTM B209 ALLOY ACLAD 2024-T4.

POST CONNECTION
HAND RAIL SECTION

POST CONNECTION
ELEVATION

POST CONNECTION
BARRIER RAIL SECTION

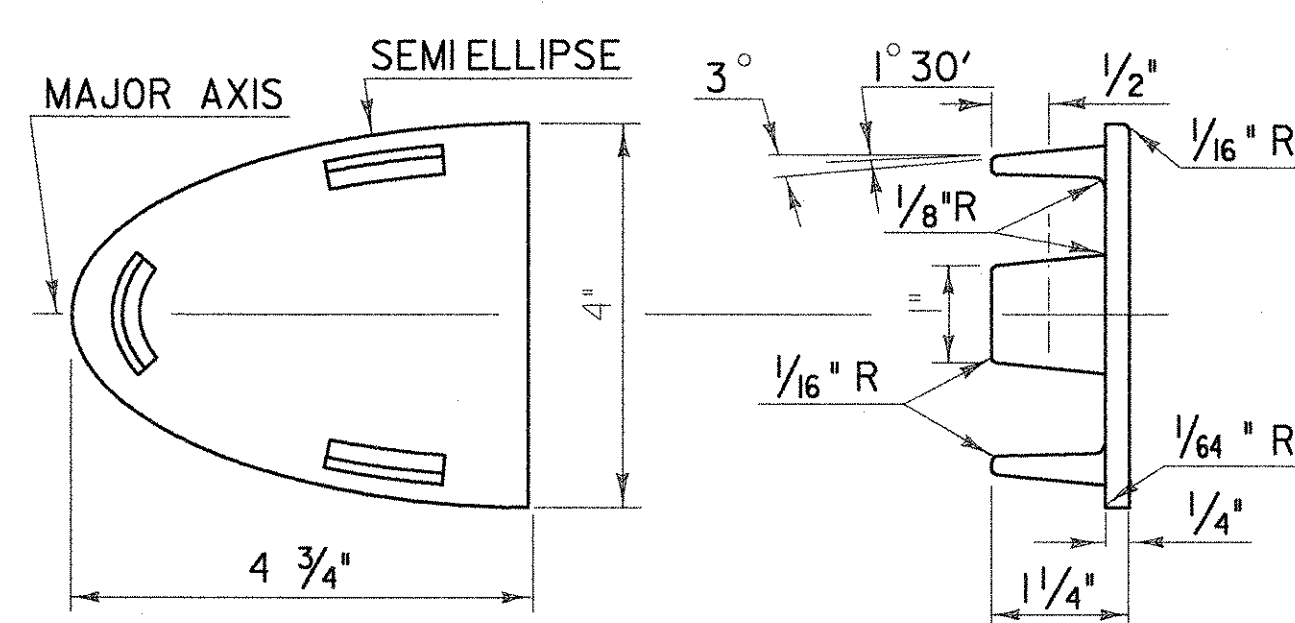
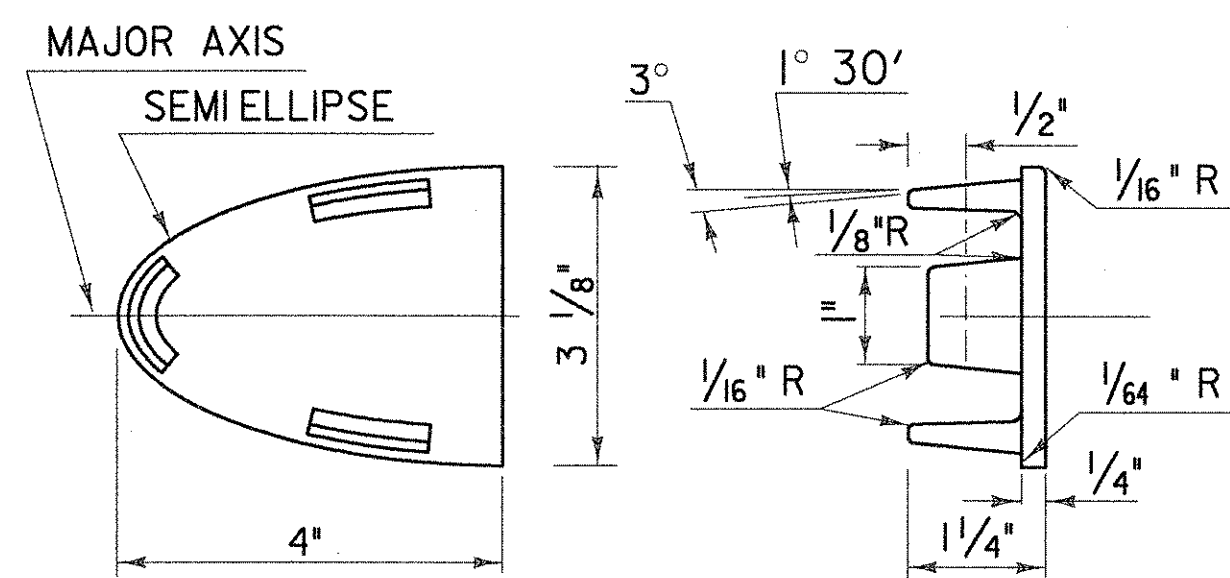


HAND RAIL
SPLICE SECTION

ELEVATION OF
HAND RAIL SPLICE BAR

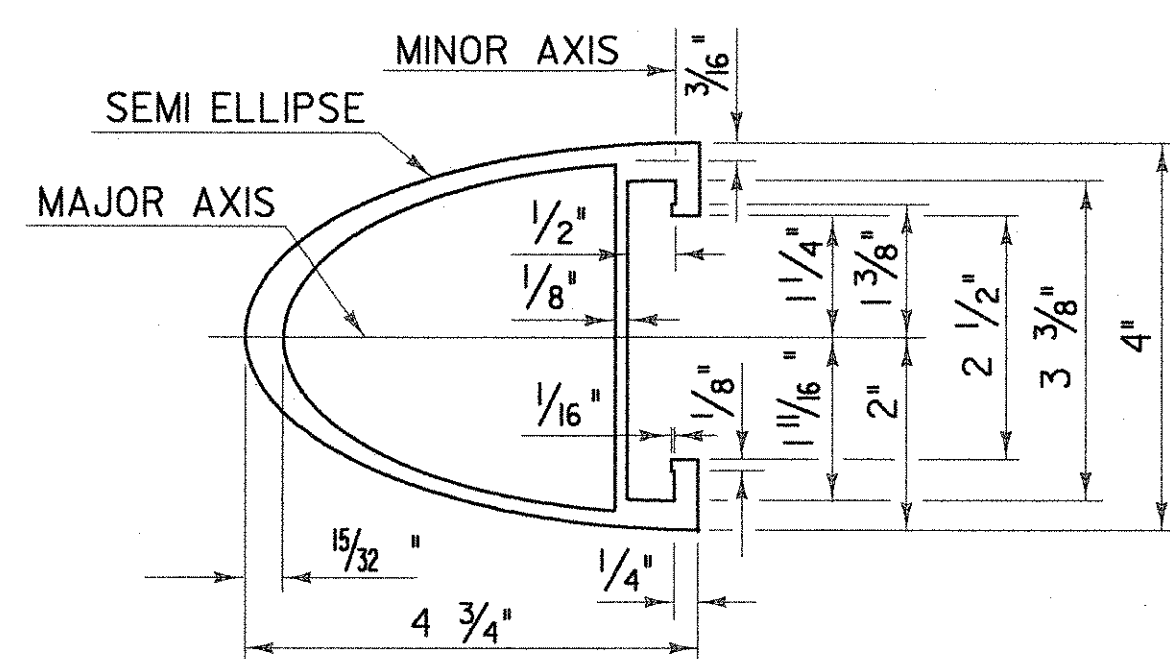
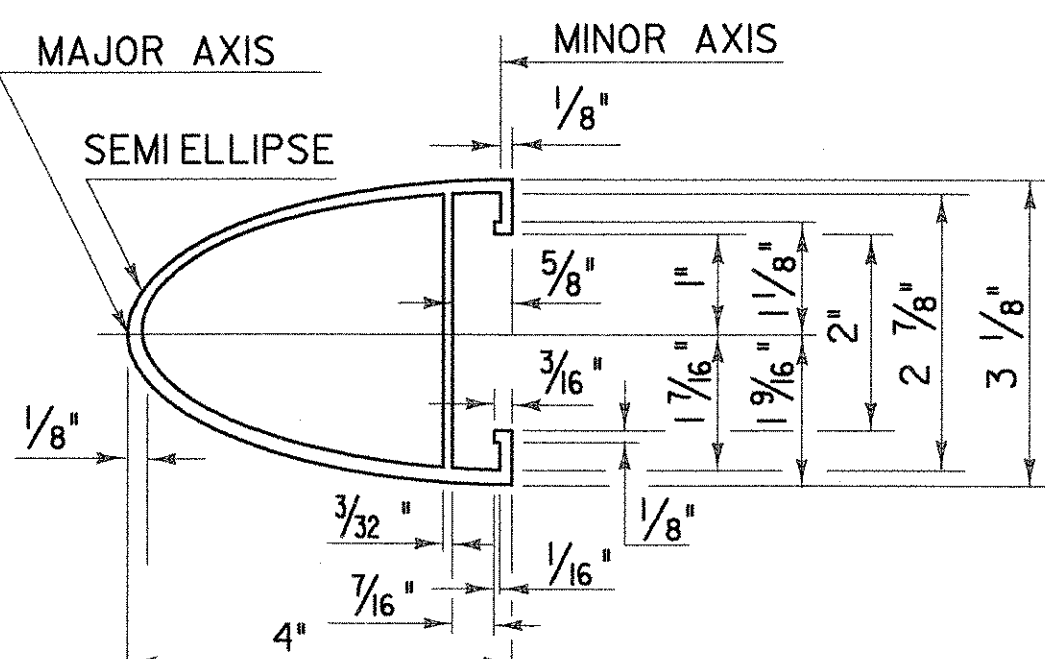
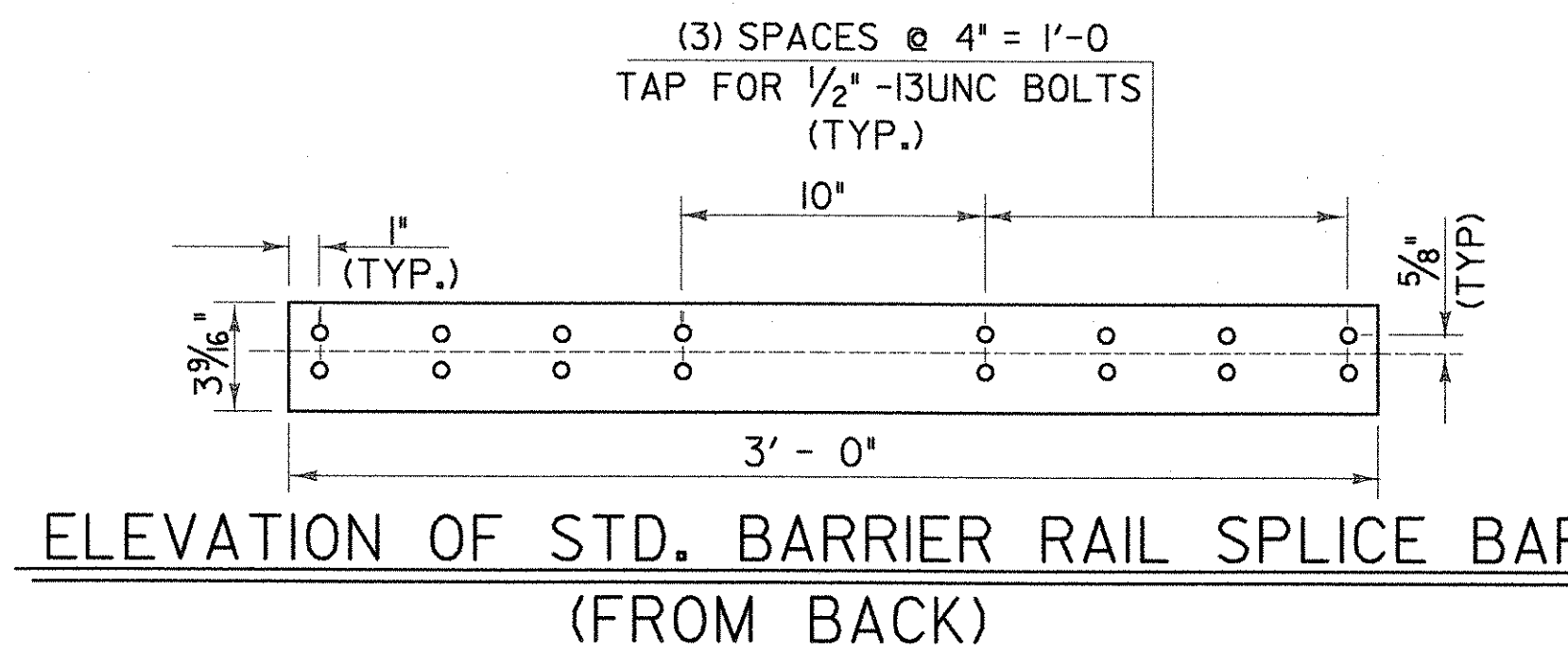
BARRIER RAIL
SPLICE SECTION

(SEE SHEET 166 FOR ELEVATION OF BARRIER RAIL SPLICE BAR)



HAND RAIL END CAP

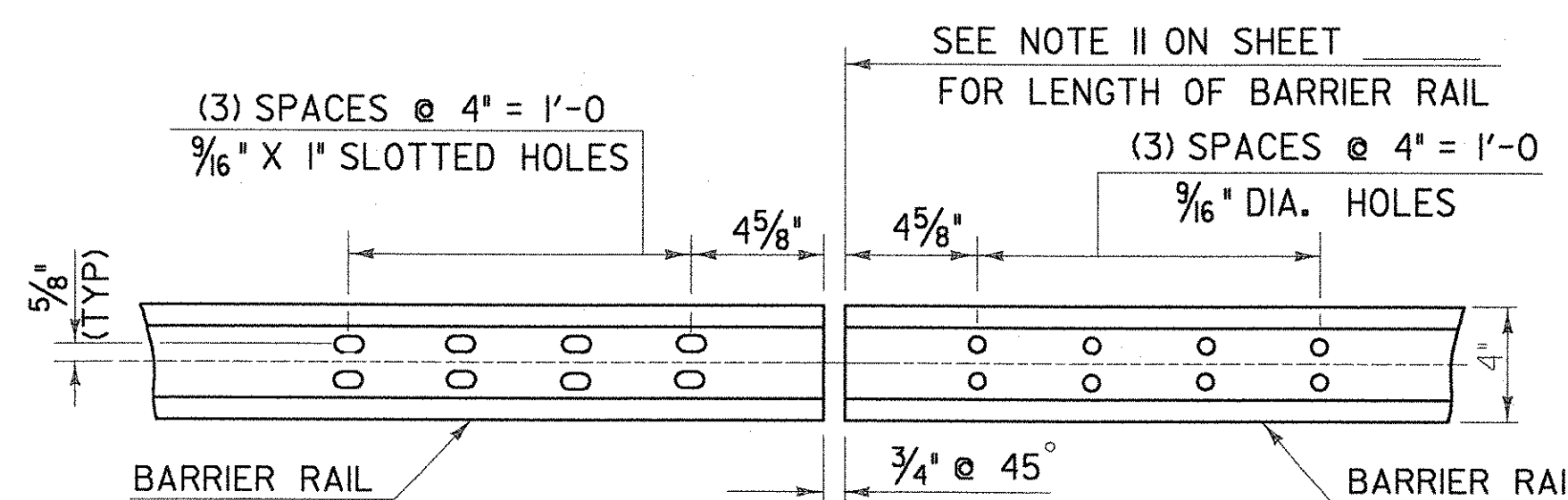
BARRIER RAIL END CAP



HAND RAIL SECTION

BARRIER RAIL SECTION

(SEE SHEET 166 FOR ELEVATION OF BARRIER RAIL)



ELEVATION OF BARRIER RAIL (FROM BACK) AT ALL INTERMEDIATE RAIL SPLICES

ALUMINUM APPROACH RAILING DETAILS

SURVEYED BY	DATE
DRAWN BY EMW	DATE 06/03
SQUAD LEADER JAW	
DESIGN FILE NO. 89108Border.dgn	
IPARM FILE	DATE PLOTTED
PROJ. NAME BURLINGTON	
PROJ. NO. MEGC 5000 (15)	
SHEET 167 OF 252 SHEETS	