

TRAFFIC SIGNAL NOTES:

- 1.) THE OFF-PEAK PROGRAM SHALL ALSO RUN ON WEEKENDS, (24 HOURS).
- 2.) MINIMUM RECALL FOR #A SHALL BE 20 SECONDS.
- 3.) SIGNAL EQUIPMENT LOCATION FIELD VERIFIED BY BURLINGTON DEPARTMENT OF PUBLIC WORKS.
- 4.) EXISTING TIMINGS TO REMAIN. EXISTING PULLBOXES, STRAIN POLES, SIGNAL HEADS, AND PEDESTRIAN EQUIPMENT SHALL BE MAINTAINED UNLESS OTHERWISE NOTED.
- 5.) EXISTING LOOPS TO BE REPLACED IN KIND.
- 6.) THE CONTROL CABINET SHALL BE A 336 DOUBLE DOOR CABINET WITH AN ALUMINUM 8 TO 12" HIGH ADAPTER ATTACHED TO A CEMENT FOUNDATION, 24"WIDE, 20" DEEP, AND 18" ABOVE THE GROUND LEVEL.
- 7.) THE CABINET SHALL BE ORIENTED TO ALLOW SIMULTANEOUS VIEWING OF THE SIGNALS WHILE PROGRAMMING OR MAINTAINING THE CONTROLLER
- 8.) SEE SHEET 150 FOR ADDITION TRAFFIC RELATED NOTES.
- 9.) SEE SHEET 104 FOR UNDERGROUND ELECTRICAL SERVICE CONNECTION
- 10.) LUMINARIES ON M.A. POLES SHALL MATCH CHARACTERISTICS OF THE OTHER LIGHTING STRUCTURES IN THE PROJECT AREA (I.E. LENGTH, COLOR HEIGHT, ETC.)

VEHICLE LOOP DETECTORS										
LANE	LOOP NO.	SIZE	NO. TURNS	LOOP TYPE	CALL #	INDUCTANCE	RESISTANCE	LEAKAGE	LOCKING	
						CALC.	ACT.	CALC.	ACT.	TO GRND.
WB LT LANE	1,2	6'-OCT	3	CALL	# A					
WB THRU LANE	3	6'-OCT	4	EXT/CALL	# A					
EB LT LANE	4,5	6'-OCT	4	CALL	# A					
EB THRU LANE	6	6'-OCT	4	EXT/CALL	# A					
NB ALL	7,8,9,10	6'-OCT	3	EXT/CALL	# B					
SB ALL	11,12,13	6'-OCT	4	EXT/CALL	# B					

FOUNDATION LOCATIONS				
LOC. #	TYPE	STATION	OFFSET	NOTES
1	PB	23+06	44' RT	EXISTING PULLBOX W/STEEL COVER
2	PP	23+20	28' RT	RELOCATED PED. POLE WITH PED. SIGNAL AT 8' MOUNTING HEIGHT, PLUS SIGN AND PUSH BUTTON ASSEMBLY
3	MA	22+63	21' LT	TRAFFIC SIGNAL POLE WITH 22' MAST ARM, AND RELOCATED PED. SIGNAL AT 8' HEIGHT, PLUS SIGN AND PUSH BUTTON ASSEMBLY
4	MA	22+40	31' LT	TRAFFIC SIGNAL POLE WITH 18' MAST ARM
5	PB	22+41	34' RT	EXISTING PULLBOX W/STEEL COVER
6	PB	22+53	31' LT	EXISTING PULLBOX W/STEEL COVER
7	CC	22+86	34' LT	NEW CONTROLLER CABINET & FOUNDATION
8	PB	22+65	29' LT	NEW 12"X18" CONCRETE PULLBOX W/STEEL COVER
9	PB	22+84	30' LT	REPLACE EXISTING PEDESTRIAN POST W/ NEW PULLBOX
10	PP	22+80	20' LT	RELOCATED PEDESTRIAN POST
11	PP	21+86	34' LT	NEW PEDESTRIAN POLE WITH PED SIGNAL AT 8' MOUNTING HEIGHT, PLUS SIGN AND PUSH BUTTON ASSEMBLY (CONNECT TO EXISTING CONDUIT)

	R/W	PHASE A (DWELL)			PHASE B			PHASE C (excl. PED)			FLASH
		CLEAR TO			CLEAR TO			CLEAR TO # A			
		# B	# C	# A	# A	# C	# A	# A	# A		
AM PEAK 7:00-9:00AM		INIT. INT.	20								
		VEH. EXT.	3								
		MIN GR.	20	5	3	5	3				
		MAX 1	50								
		MAX 2	-								
OFF PEAK 9:00AM-6:00PM		INIT. INT.	20								
		VEH. EXT.	3								
		MIN GR.	20	5	3	5	3				
		MAX 1	50								
		MAX 2	-								
PM PEAK 3:00-6:00PM		INIT. INT.	20								
		VEH. EXT.	3								
		MIN GR.	20	5	3	5	3				
		MAX 1	50								
		MAX 2	-								

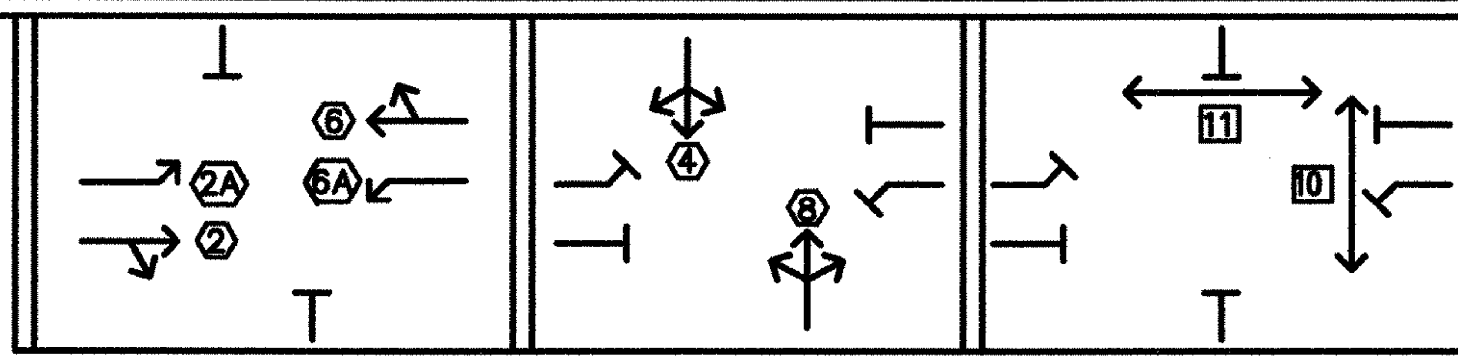
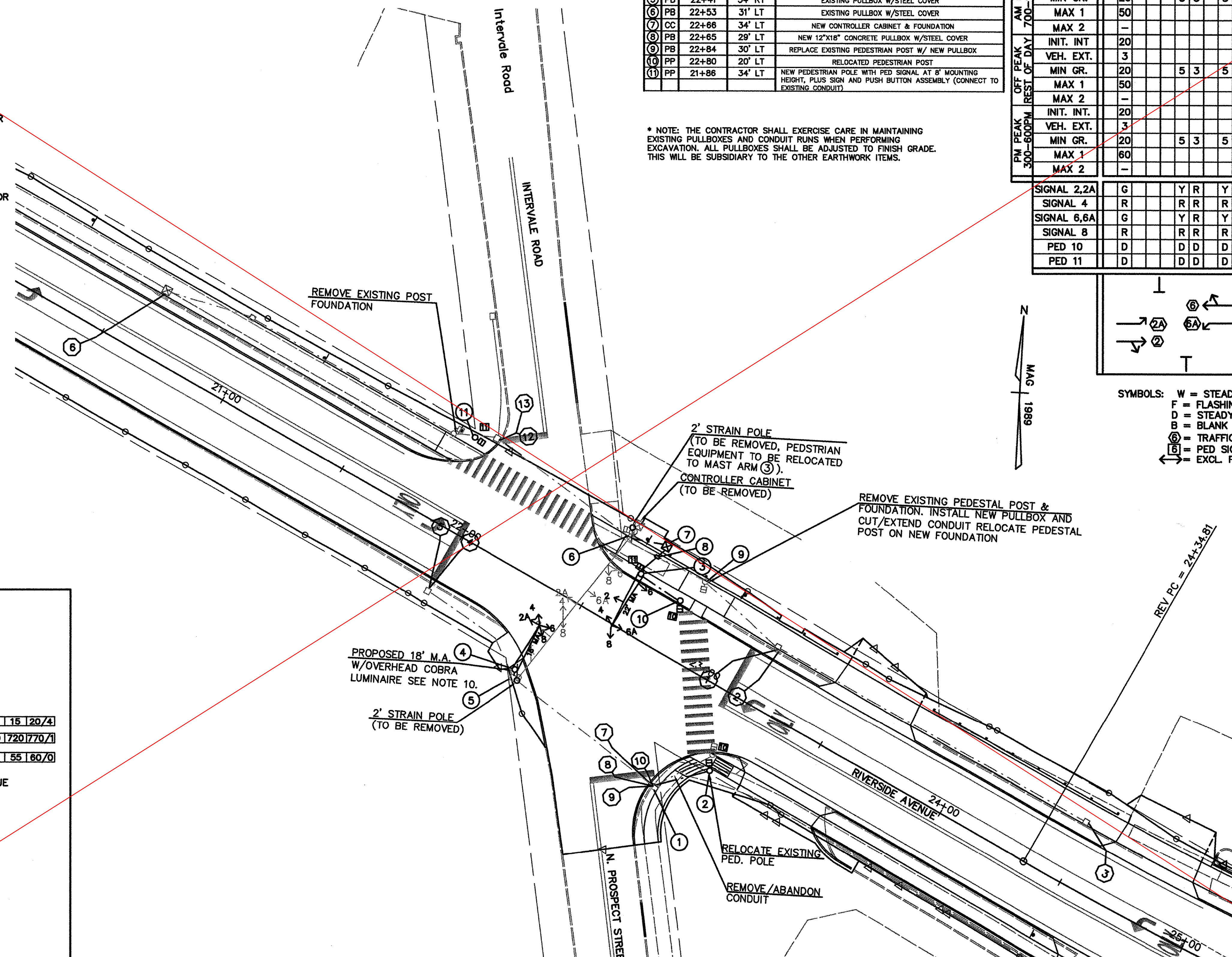
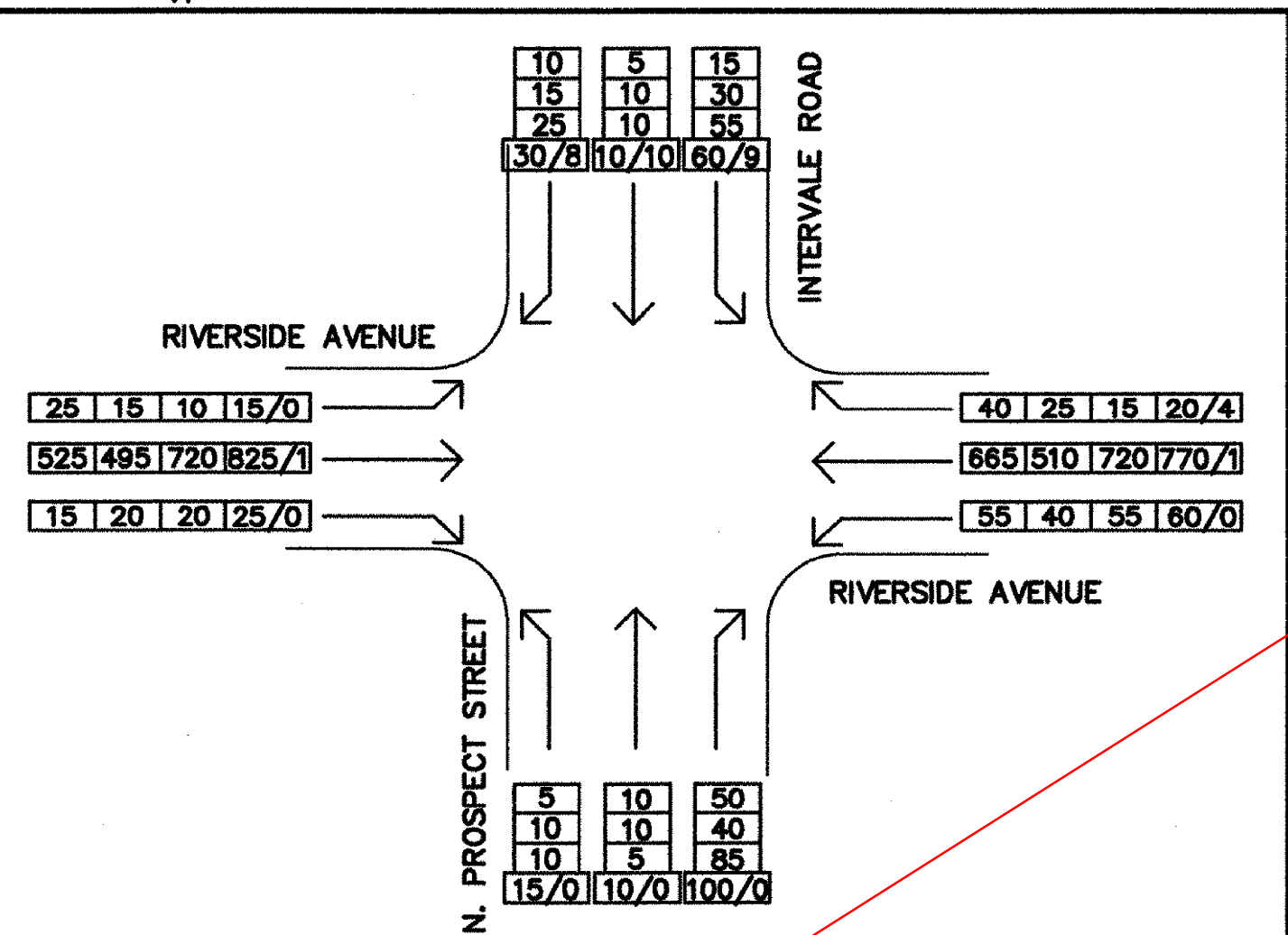
* NOTE: THE CONTRACTOR SHALL EXERCISE CARE IN MAINTAINING EXISTING PULLBOXES AND CONDUIT RUNS WHEN PERFORMING EXCAVATION. ALL PULLBOXES SHALL BE ADJUSTED TO FINISH GRADE. THIS WILL BE SUBSIDIARY TO THE OTHER EARTHWORK ITEMS.

ONE-SECTION L.E.D. 16"X18" SYMBOLIC/COUNT-DOWN PEDESTRIAN HEADS GELCORE MODEL PS7-CFC9-01A OR APPROVED EQUIVALENT

SIGNAL HEADS 12" LENSES, LED LAMPS

ALL SIGNAL HEADS SHALL TUNNEL VISORS

LEFT TURN YIELD ON GREEN TO BE PLACED ADJACENT TO SIGNAL HEADS 2 & 6.



SYMBOLS: W = STEADY WALK
F = FLASHING DON'T WALK
D = STEADY DON'T WALK
B = BLANK
⊙ = TRAFFIC SIGNAL FACE
⊞ = PED SIGNAL FACE
← = EXCL. PED PHASE

NEW LOCATIONS ONLY

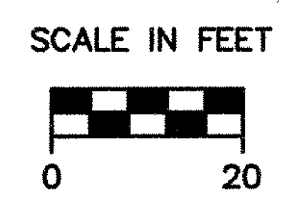
FROM	TO
PB (1) (EXIST)	SP (2) (REL)
MA (3)	PB (8)
MA (4)	PB (5) (EXIST)
PB (6) (EXIST)	CC (7)
CC (7)	PB (8)
PB (8)	PP (9) (EXIST)

LEGEND

- ELECTRICAL CONDUIT
- PROPOSED PULLBOX/JUNCTION BOX
- PROPOSED PEDESTRIAN POLE
- PROPOSED TRAFFIC SIGNAL POLE
- TRAFFIC SIGNAL CONTROLLER

TRAFFIC SIGNAL PLAN

SURVEYED BY CLD DATE 7/89
 DRAWN BY BF/KRD DATE 06/03
 SQUAD LEADER JAW
 DESIGN FILE NO. 89-108
 IPARM FILE DATE PLOTTED
 PROJ. NAME BURLINGTON
 PROJ. NO. MEGC 5000(15)
 SHEET 153 OF 252 SHEETS



DATUM
 VERTICAL NGVD 1929
 HORIZONTAL N/A